

Retail | For Lease



1182 Thurlow Street

VANCOUVER BC

High profile Davie Village Property
C-5 Zoning

CBRE

High profile Davie Village Property

The Opportunity

1182 Thurlow Street presents a rare chance to secure a high-profile retail presence in the heart of Vancouver's vibrant Davie Village. This stand-alone commercial property offers approximately 1,500 SF across two levels plus a basement, supported by up to three surface parking stalls.

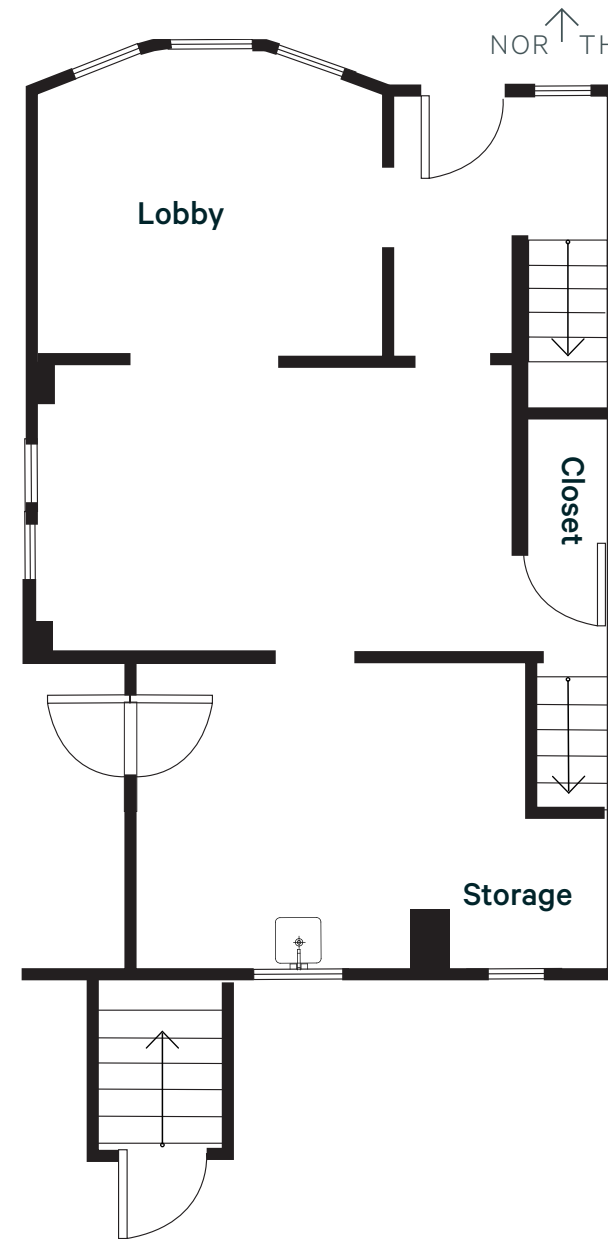
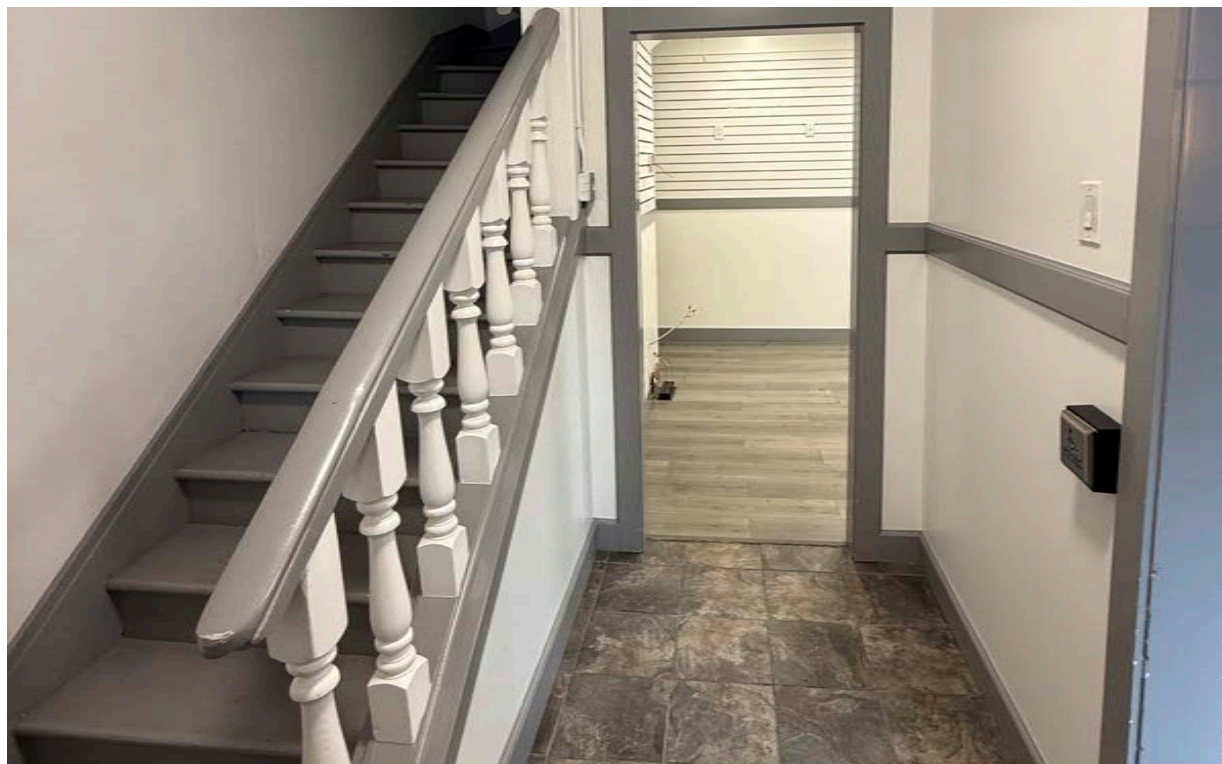
With C-5 zoning, the space accommodates a wide range of commercial uses including retail, office, medical, florist, childcare, and other service-oriented businesses.



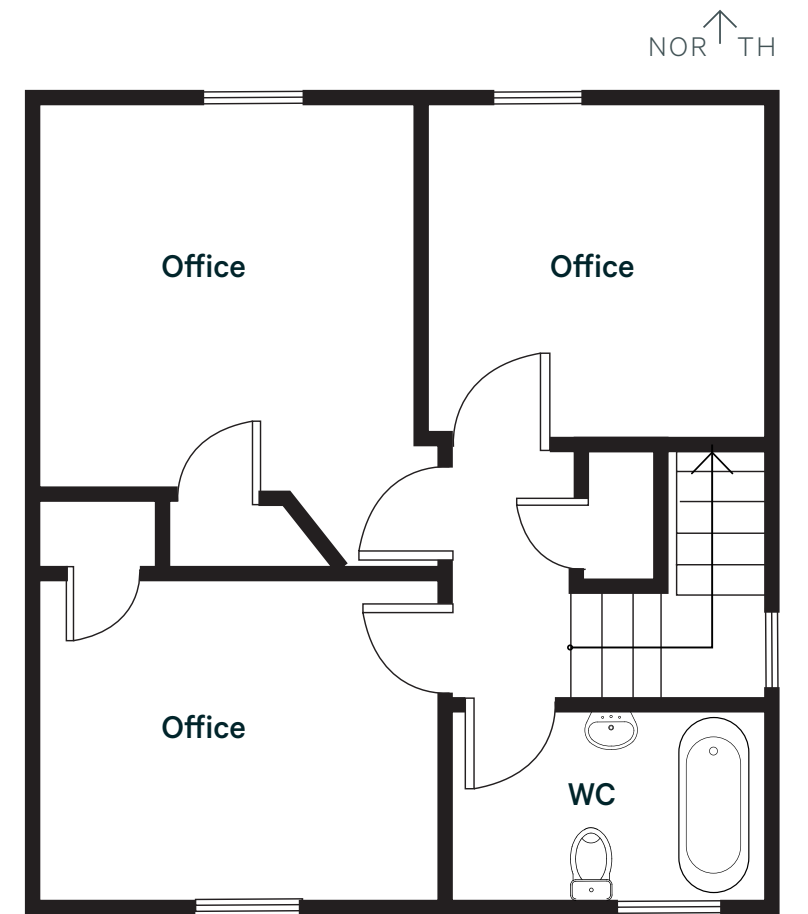
AVAILABLE OFFICE AREAS

Available Area	Approx. 1,500 SF (on 2 levels plus basement)
Taxes & Operating Costs	\$20.00 (2025 estimate)
Parking	Up to 3 surface stalls
Availability	Immediate
Zoning	C-5 which permits many commercial uses including retail, florist, medical, office, space, childcare and other services.

Floor Plans



LEVEL 1



LEVEL 2

Floor Plans Not To Scale



98



WALKER'S
PARADISE

90



BIKER'S
PARADISE

100



RIDER'S
PARADISE

Contact Agent

Michael Mylett

Vice President
Advisory & Transaction Services
CBRE Limited
+1 604 219 3898
michael.mylett@cbre.com

Blake Newton

Senior Sales Associate
Advisory & Transaction Services
CBRE Limited
+1 604 662 5575
blake.newton@cbre.com

LOCATION OVERVIEW

The Davie Village is located in Vancouver's vibrant West End close to St. Paul's Hospital and surrounded by a wide variety of shops, restaurants, and cafes.

CBRE

CBRE Limited
1021 West Hastings Street #2500, Vancouver, BC
www.cbre.ca

This disclaimer shall apply to CBRE Limited, Real Estate Brokerage, and to all other divisions of the Corporation; to include all employees and independent contractors ("CBRE"). The information set out herein, including, without limitation, any projections, images, opinions, assumptions and estimates obtained from third parties (the "Information") has not been verified by CBRE, and CBRE does not represent, warrant or guarantee the accuracy, correctness and completeness of the Information. CBRE does not accept or assume any responsibility or liability, direct or consequential, for the Information or the recipient's reliance upon the Information. The recipient of the Information should take such steps as the recipient may deem necessary to verify the Information prior to placing any reliance upon the Information. The Information may change and any property described in the Information may be withdrawn from the market at any time without notice or obligation to the recipient from CBRE. CBRE and the CBRE logo are the service marks of CBRE Limited and/or its affiliated or related companies in other countries. All other marks displayed on this document are the property of their respective owners. All Rights Reserved.

Mapping Sources: Canadian Mapping Services canadamapping@cbre.com; DMTI Spatial, Enviroics Analytics, Microsoft Bing, Google Earth.