

OPPORTUNITY TO PURCHASE WITH ROOM FOR EXPANSION

119 W Pine Street | Pine Level, NC



ELAINE BOYLE

919-348-7943

elaine@FlagshipHP.com



FLAGSHIP
HEALTHCARE PROPERTIES

PROPERTY FOR SALE:

119 W Pine Street | Pine Level, NC



PROPERTY OVERVIEW

An outstanding opportunity for an owner or investor in Johnston County, NC, the fastest growing county in North Carolina. This property was beautifully renovated in 2020 in keeping with its historic roots. Perfect fit for retail or event venue with outdoor patio. Currently a thriving event space and ice cream shop that hosts weddings, corporate meetings and Sunday Brunch. Space includes a staging kitchen and bar. No hood or grease trap. This main street in town boasts a number of businesses including a coffee shop, gym restaurant and furniture store.

OFFERING SUMMARY

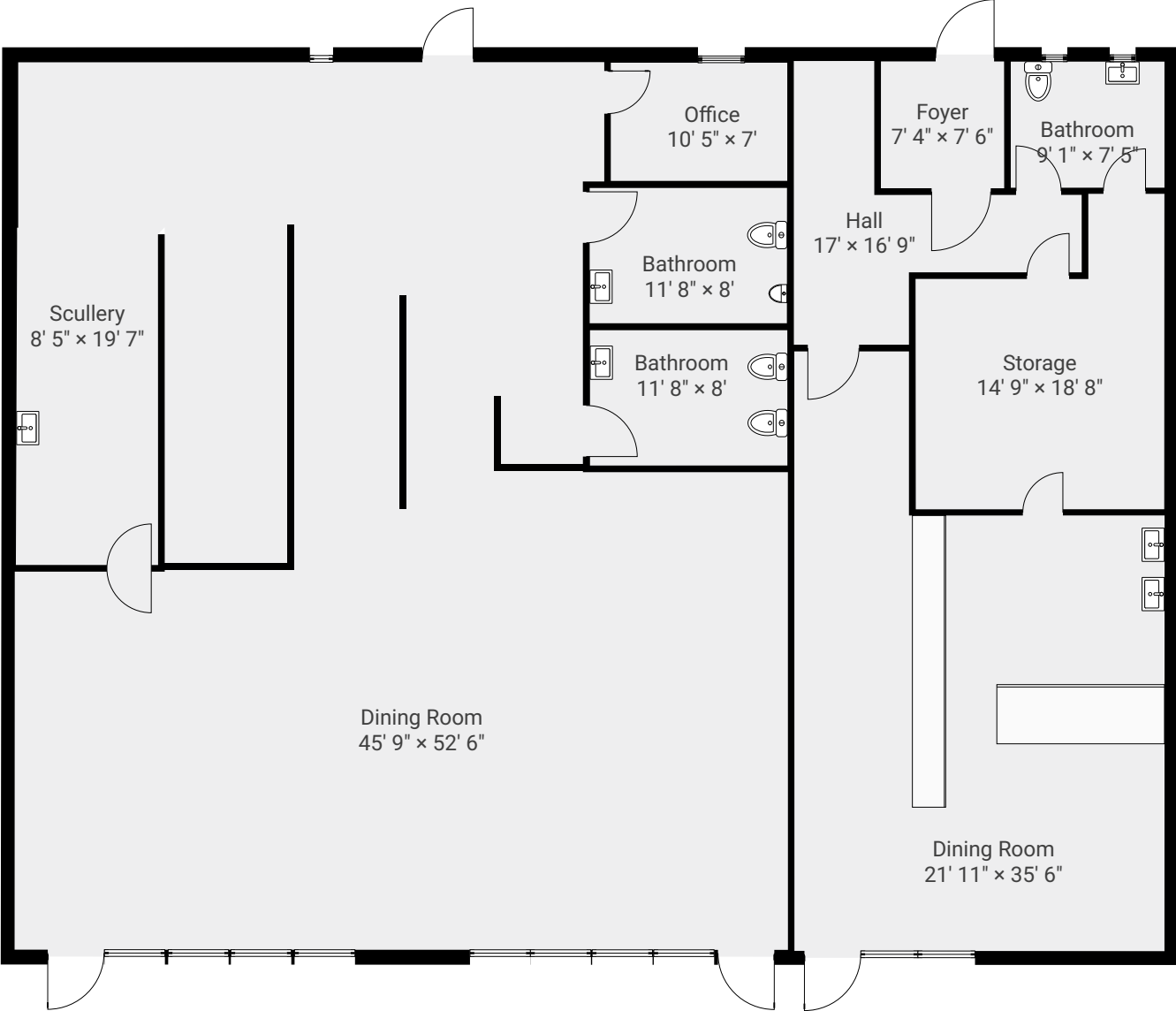
- Sales Price: \$847,000
- Zoning: Commercial - MS
- Renovated: 2020
- Building Size: 7,978 SF

PROPERTY HIGHLIGHTS

- Close proximity to major highways and train service
- 5 miles to I-95 and 2 miles to I-42
- Convenient access to Raleigh, NC
- **Located in an Opportunity Zone** - qualified investors may qualify for tax incentives
- Unfinished upper level provides opportunity for expansion

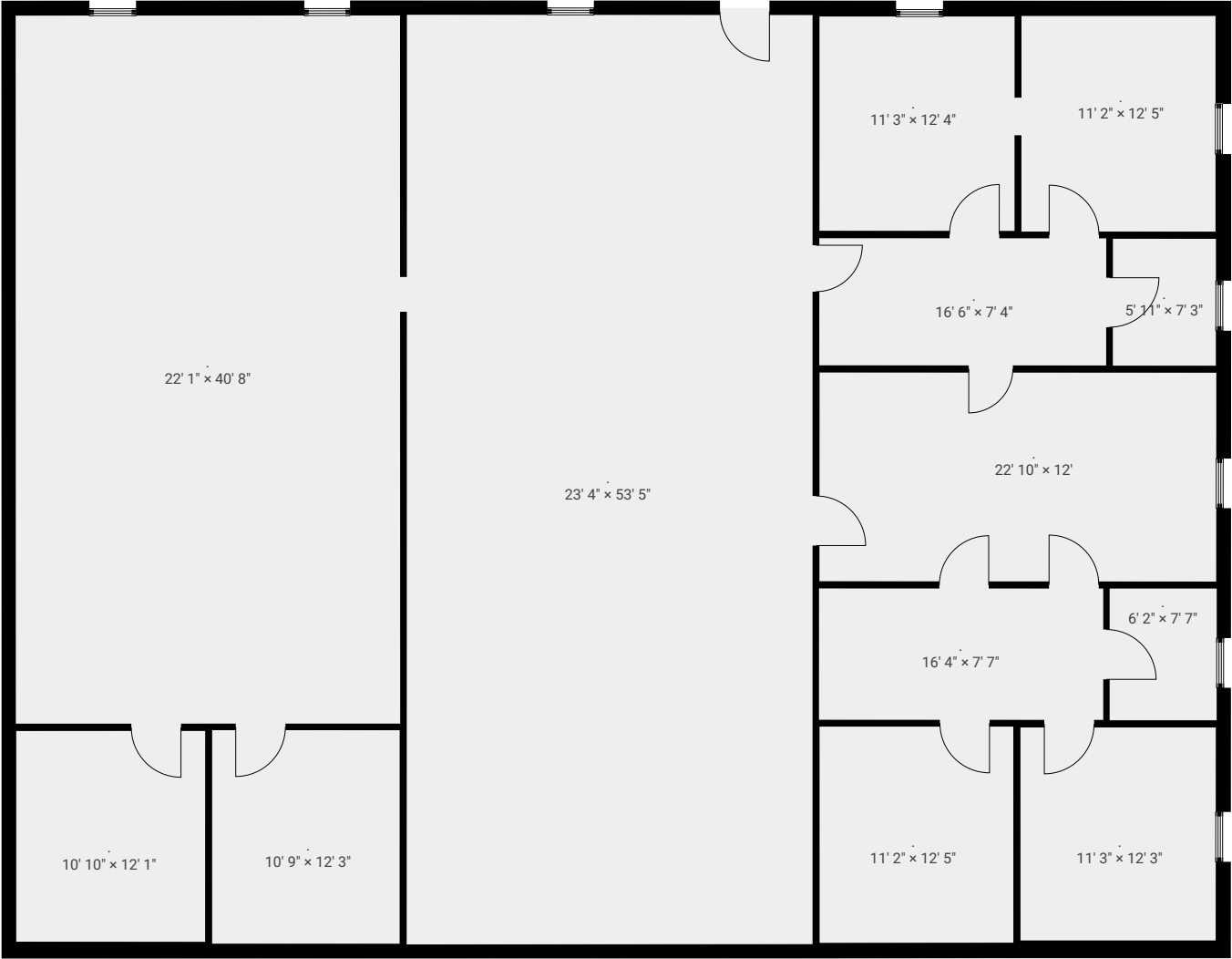
FLOOR PLAN: 1ST FLOOR

3,989 SF



FLOOR PLAN: 2ND FLOOR

3,989 SF

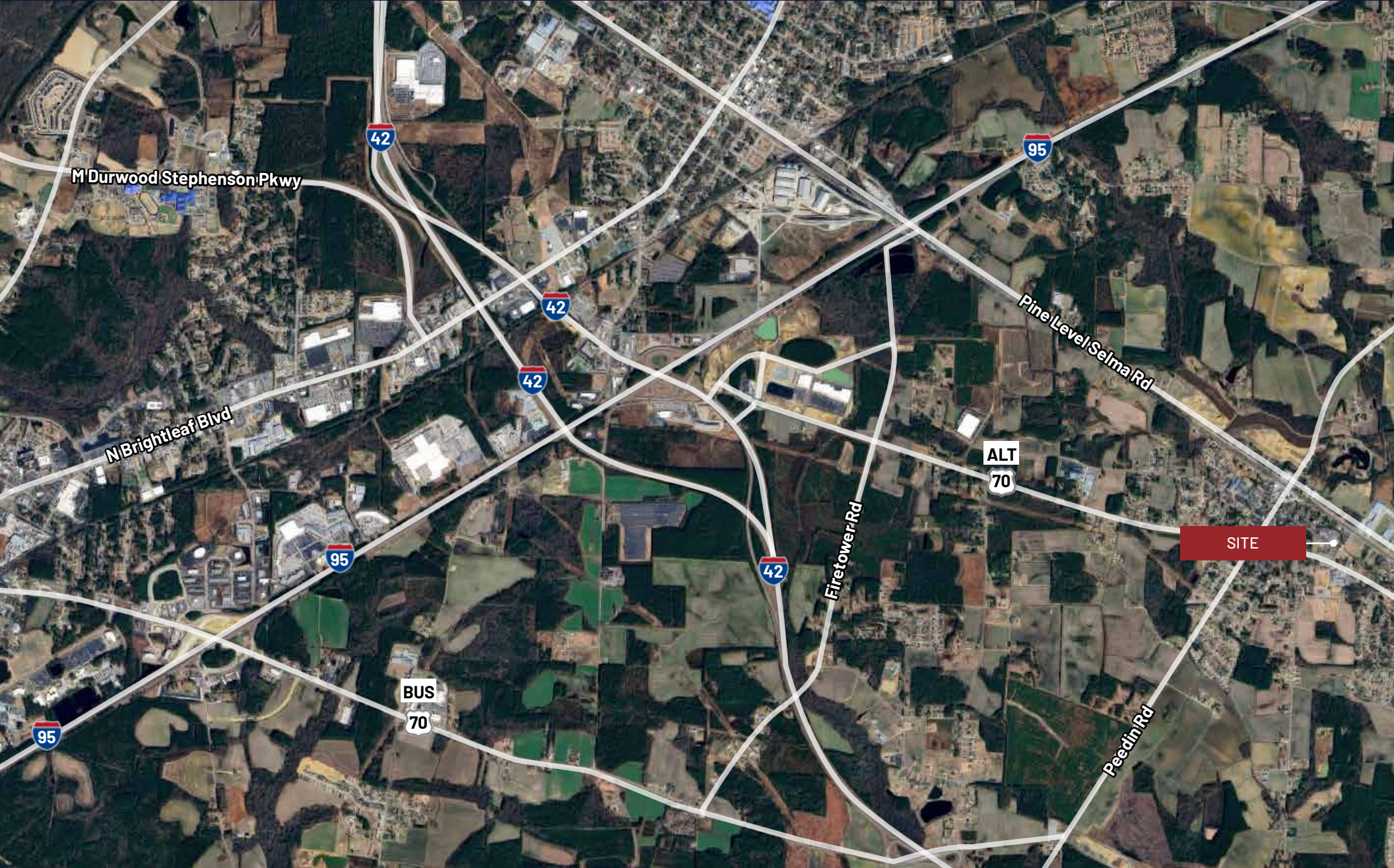


PROPERTY FOR SALE:

119 W Pine St.



LOCATION MAP



PINE LEVEL, NC OVERVIEW MAP



- Dunkin'
- Popeyes
- Cook Out
- Waffle House
- Bojangles
- bp
- McDonald's

Selma

Smithfield-Selma High School

Walmart

Hinnant Farms Vineyard & Winery

UNC Health

Food Lion

Eastfield Mall

- Five Below
- Ulta
- Old Navy
- Hobby Lobby

Lowe's

SITE

- Carolina Apparel
- Wawa
- Old North State Food Hall
- Longleaf Tavern
- Denny's

Town Market

Carolina Premium Outlet

- Coach Outlet
- Tommy Hilfiger
- Ralph Lauren
- J. Crew
- Nike
- Timberland
- Levi's
- Columbia
- Under Armour
- Adidas

Parkside Cafe

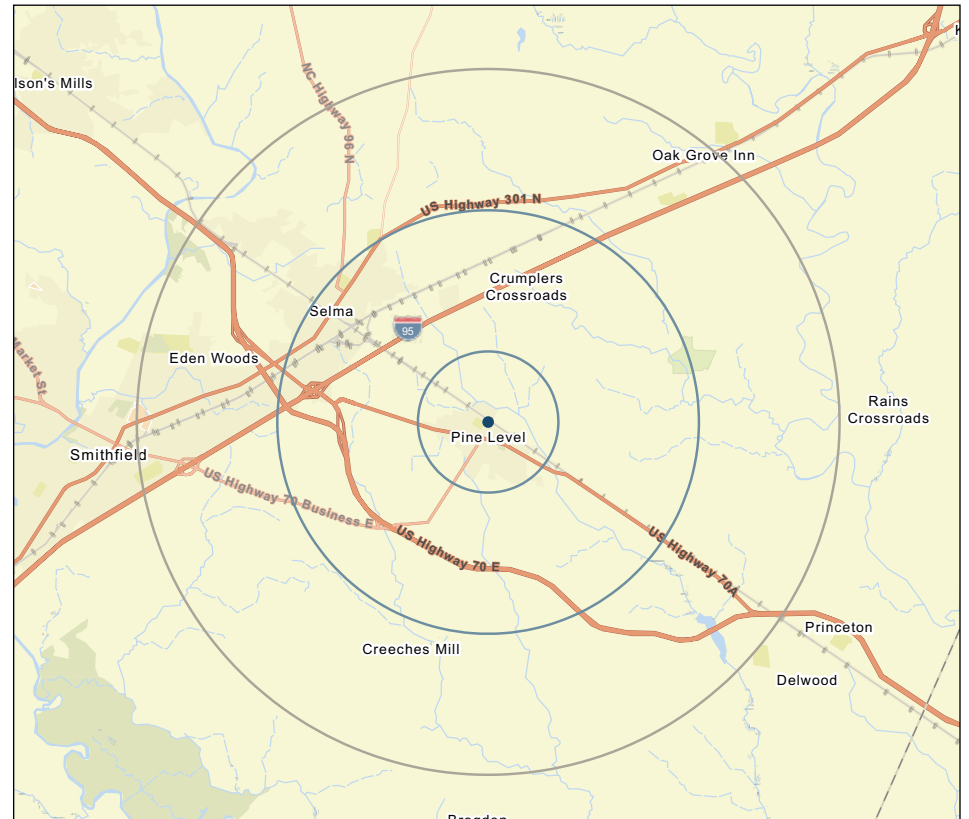
Johnson Community College

DEMOGRAPHICS

POPULATION	1 Mile	3 Miles	5 Miles
2020 POPULATION	1,707	9,570	20,681
2025 POPULATION	1,724	9,614	21,463
ANNUAL GROWTH 2025-2030	1.1%	1.4%	1.8%
MEDIAN AGE	38.1	37.7	38.5

HOUSEHOLDS	1 Mile	3 Miles	5 Miles
2020 HOUSEHOLDS	687	3,721	7,840
2025 HOUSEHOLDS	708	3,833	8,356
ANNUAL GROWTH 2025-2030	1.6%	1.7%	2.2%
AVG HOUSEHOLD SIZE	2.43	2.50	2.54

INCOME	1 Mile	3 Miles	5 Miles
AVG HOUSEHOLD INCOME	\$77,671	\$71,035	\$74,550
MEDIAN HOUSEHOLD INCOME	\$75,037	\$61,614	\$61,288



HOUSING	1 Mile	3 Miles	5 Miles
MEDIAN HOME VALUE	\$265,000	\$252,542	\$234,519
MEDIAN YEAR BUILT	1991	1981	1984

CONTACT

ELAINE BOYLE

919-348-7943

elaine@FlagshipHP.com



FLAGSHIP
HEALTHCARE PROPERTIES