

13.14 Acres
Finished Industrial Land
FOR SALE

7121
Charity Avenue
Bakersfield, CA 93308

Property Highlights

- Easy access to Rosedale Highway, Westside Parkway, Highway 58
- Located in the heart of the "Oilpatch"
- Zoned M-2 PD (Medium Industrial)

The information contained herein may have been obtained from sources other than ASU Commercial. We have not verified such information and make no guarantees, warranties or representations about such information. It is your responsibility to independently confirm its accuracy and completeness prior to purchasing/leasing the property.



Wesley M. McDonald ▪ Principal ▪ 661 885 6950 ▪ wesley.mcdonald@asuassociates.com ▪ CA RE #01511739
Parker Reynolds ▪ Vice President ▪ 661 885 6925 ▪ parker@asuassociates.com ▪ CA RE #02156913
11601 Bolthouse Drive Suite 110 ▪ Bakersfield, CA 93311 ▪ 661 862 5454 main ▪ 661 862 5444 fax

Finished Industrial Land For Sale

Property Information

7121 Charity Avenue • Bakersfield, CA

7121 Charity Avenue is located in the heart of the "Oilpatch." The site offers easy access in and out of the "Oilpatch" via Rosedale Highway, which has a signalized intersection less than 1/4 mile from the subject property.

Highlights

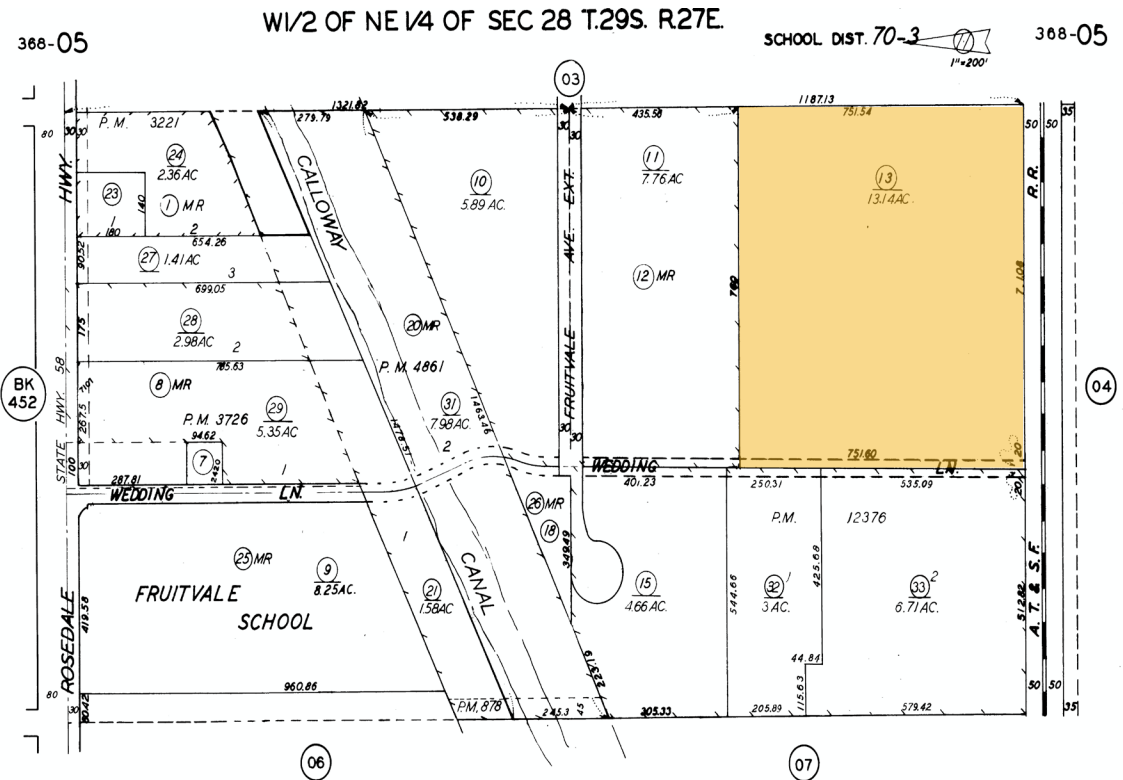
- The "Oilpatch" is one of the most desirable industrial areas in Bakersfield
- This is a rare opportunity to purchase 13.14 acres of land in the heart of the "Oilpatch"
- APN 368-050-13
- Zoned M-2 PD (Medium Industrial)
- Water - California Water Service Company
- Sewer - County of Kern
- Gas - The Gas Company
- Electric - Pacific Gas & Electric Company

Available

13.14 acres of M-2 PD land

Sale Price

\$3,500,000



Revised: 09/01/2021

Note: This map is for assessment purposes only. It is not to be construed as portraying legal ownership or divisions of land for purposes of zoning or subdivision law.

ASSESSORS MAP NO. 368-05
COUNTY OF KERN

Finished Industrial Land For Sale

Aerial Map

7121 Charity Avenue - Bakersfield, CA

