



For Lease

Class A Office Space
1,310 SF – 8,174 SF

100 West Liberty
Reno, NV 89501

Premier Office Building
in the Heart of Reno



View Virtual
Tours Here

Melissa Molyneux SIOR, CCIM

Executive Vice President

+1 775 823 4674 Direct

+1 775 762 7990 Cell

Melissa.Molyneux@colliers.com

NV Lic BS.0144599.LLC

Jason Hallahan

Associate

+1 775 333 6969 Direct

+1 775 287 5610 Cell

Jason.Hallahan@colliers.com

NV Lic S.0200644

5520 Kietzke Lane, Suite 300

Reno, NV 89511

+1 775 823 9666

Colliers.com/Reno





Property Features

- Downtown Reno's premier class A office building
- 12-story tower, totaling ±165,000 SF
- 5-level secure on-site parking garage with elevators providing direct access to all floors
- Unparalleled views of the mountains with outdoor balconies on all floors
- On-site gym, showers and locker rooms free to tenants
- Adjacent to Nevada Museum of Art and steps from downtown amenities and restaurants
- Professionally managed by CBRE with on-site manager
- Major lobby remodel in 2020

Current Space For Lease 1,310 SF – 8,174 SF

Suite	Square Feet	Suite Note
1100	7,236	Available 11/1/2026
900	8,174	View Virtual Tour
790	1,378	1, View Virtual Tour
700	1,906	1, View Virtual Tour
690	3,232	View Virtual Tour
650	4,569	View Virtual Tour
150	1,310	View Virtual Tour
100	4,919	Street level eyebrow signage available View Virtual Tour

1: Suites can be combined for a total of 3,284 SF



Main Lobby & High-End Finishes in Tenant Suites



High-End Finishes in Tenant Suites




11th Floor Availability



 Common Area

Available Space

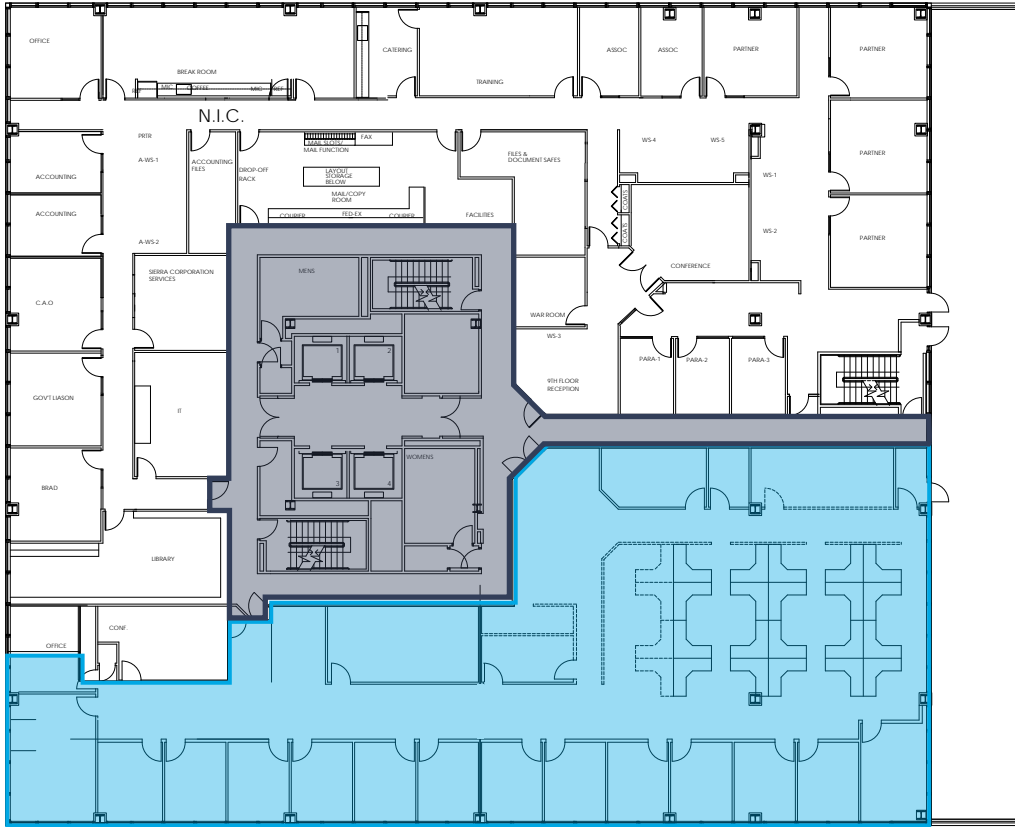
Suite	Square Feet	Suite Note
 1100	7,236	Available 11/1/2026

Suite 1100

Well located office directly off the elevator landing on the 11th floor. Suite offers reception area and conference room, ample private offices with many on the window line, break area, file room, storage and work space.

Standard
2625.91 SF
64'-7" x 49'-7"

9th Floor Availability



 Common Area

Available Space

Suite	Square Feet	Suite Note
 900	8,174	Virtual Tour

Suite 900

Suite features access to balcony, efficient layout, ample natural light, outstanding views and recently remodeled space with high end finishes.





7th Floor Availability



 Common Area

Available Space

Suite	Square Feet	Suite Note
 790	1,378	1, Virtual Tour
 700	1,906	1, Virtual Tour

1: Suites can be combined for a total of 3,284 SF

Suite 790

Suite features an open reception area, storage closet and two private offices.

Suite 700

Suite features a large conference room, multiple interior offices, bullpen area and a restroom.

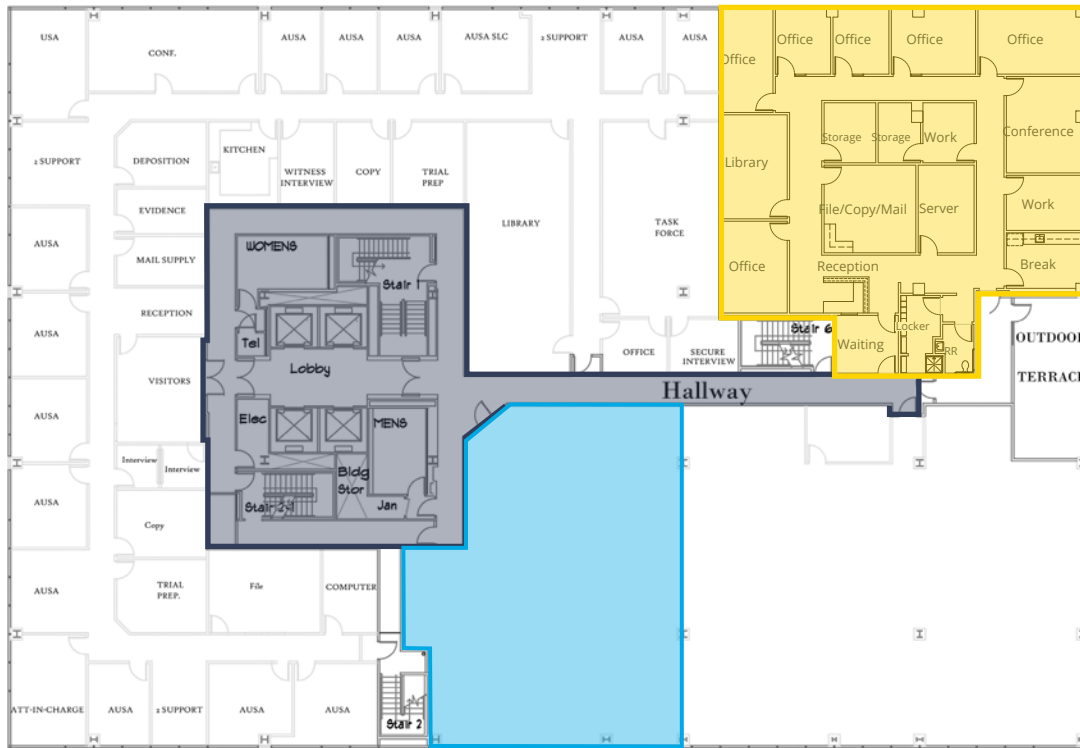


Suite 790



Suite 700

6th Floor Availability



Common Area

Available Space

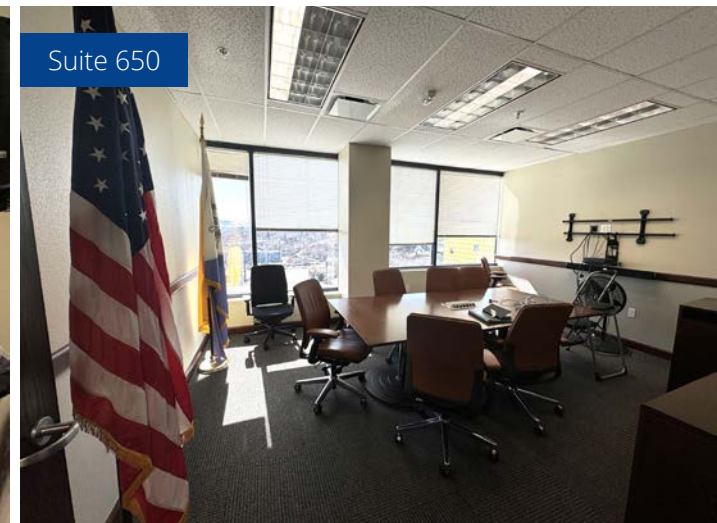
Suite	Square Feet	Suite Note
690	3,232	Virtual Tour
650	4,569	Virtual Tour

Suite 690

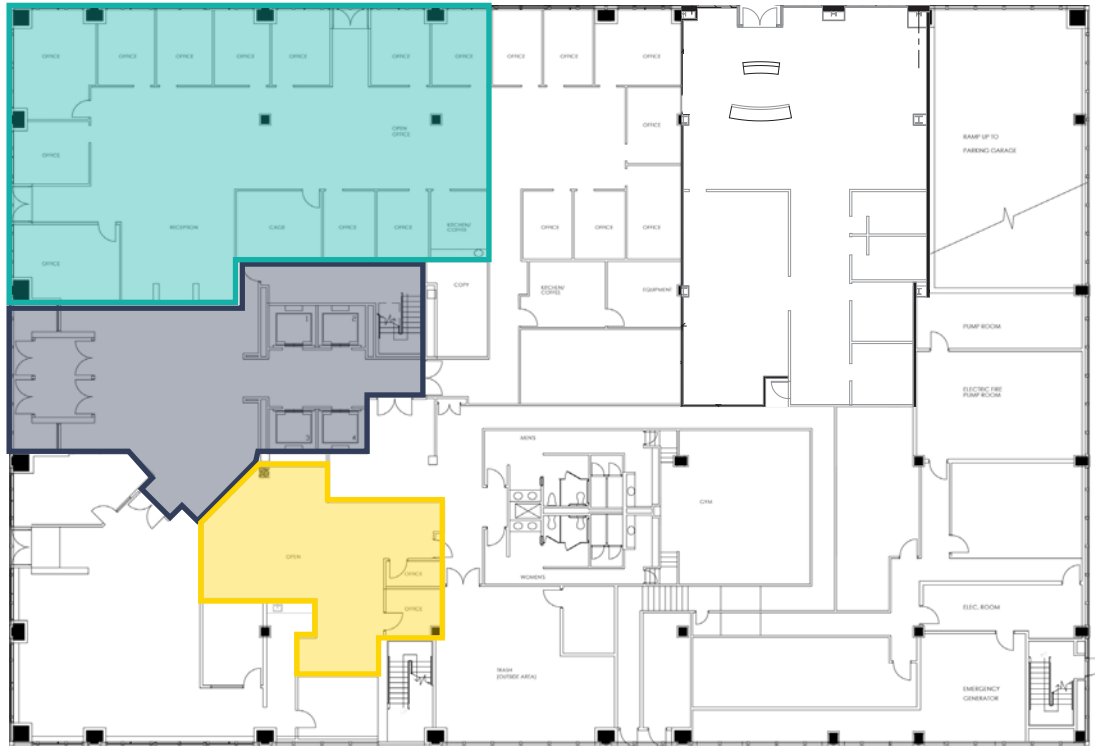
Suite is in shell condition and ready for custom improvements. Conveniently located just off the elevator lobby and has access to the common balcony on the 6th floor for tenant's use.

Suite 650

Suite features a secure reception area, eight private offices, restroom with showers, storage and file rooms, break area with sink and a conference room. In addition, the suite offers outstanding views with ample window line and access to the common balcony on the 6th floor.



1st Floor Availability



Common Area

Available Space

Suite	Square Feet	Suite Note
150	1,310	Virtual Tour
100	4,919	Virtual Tour

Suite 150

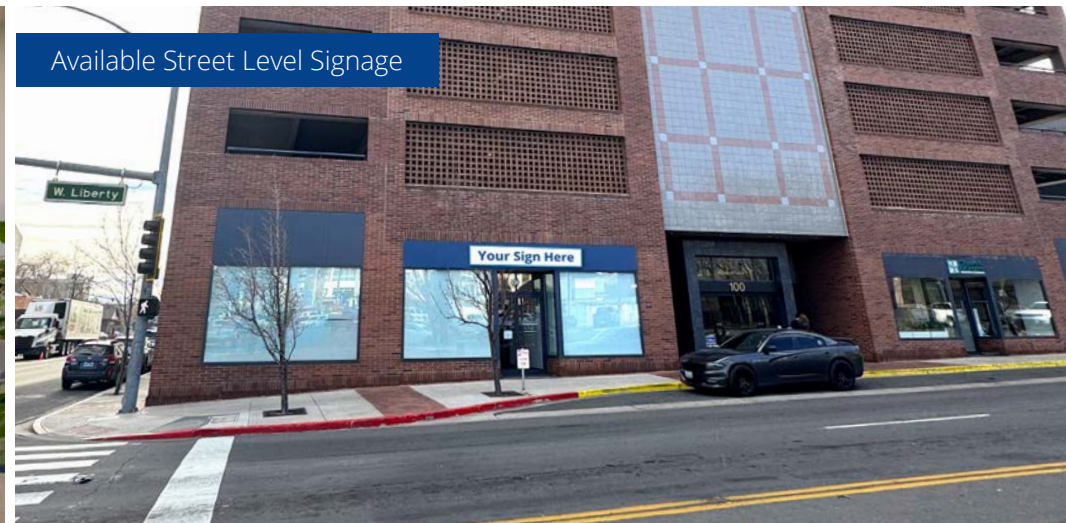
Located off the first floor lobby and offers an open layout with small breakroom. Ideal for office or retail use.

Suite 100

Located on the first floor with ample window line and easy access from the main building lobby as well as private door from the exterior. The suite offers multiple offices, conference room, break room, open bull pen, server room, welcoming reception area, and street-level eyebrow signage.



Lobby



Available Street Level Signage

Nevada Museum of Art – \$60M Planned Expansion

Located directly to the west of 100 W Liberty Street, the Nevada Museum of Art is planning a major remodel and expansion. The museum expansion will feature three levels, totaling in 50,000 SF and move southward along California Avenue, changing the landscape in that portion of downtown Reno. The expansion is set to re-design the cultural experience of education and research at the Nevada Museum of Art.

The first level will be comprised of an expanded library with increased access to books, archives, and collections. A dedicated art and design book shop emphasizing commitment to printed works. 10,000 SF allocated for framing, processing, and a dedicated

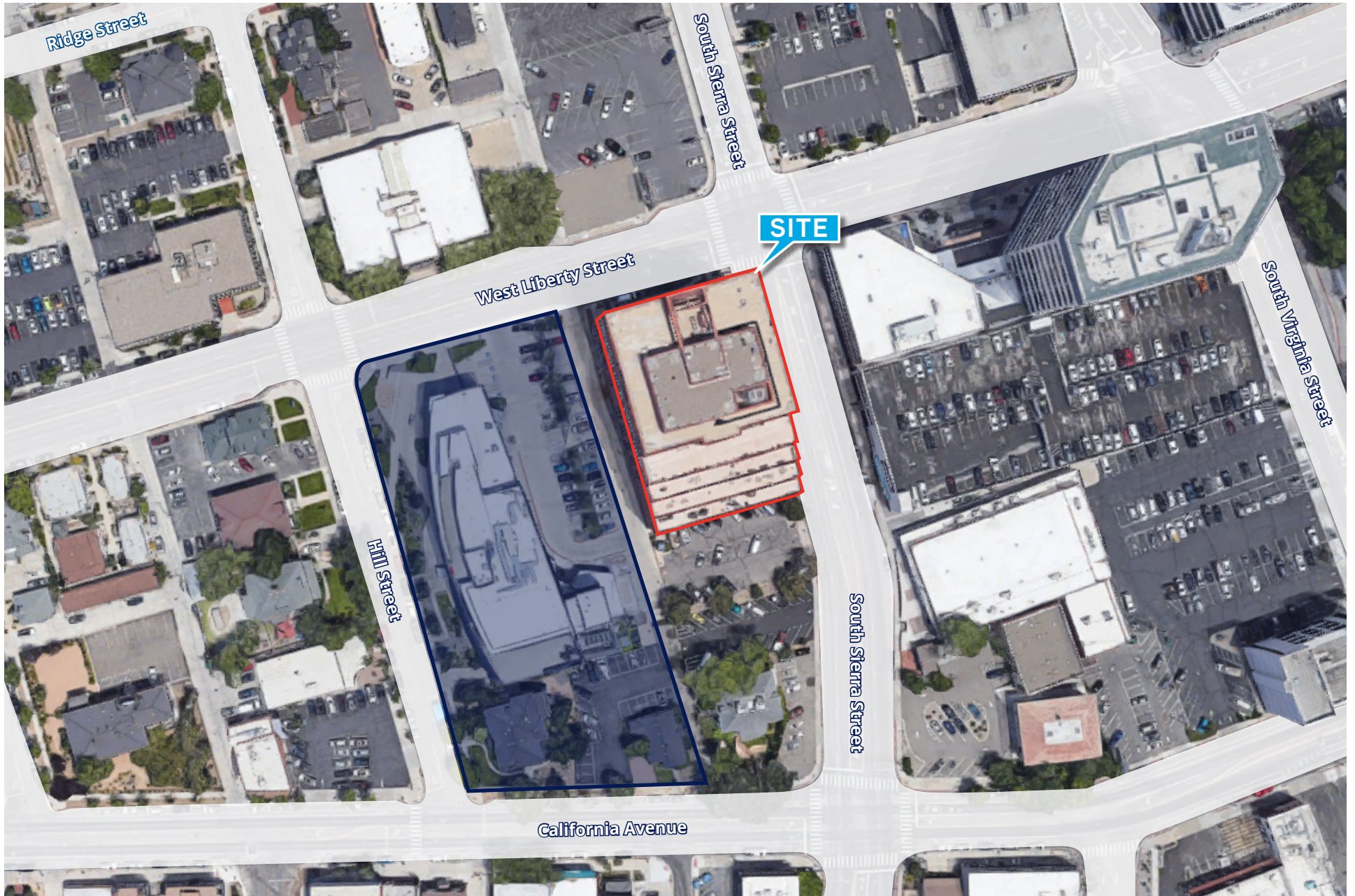
fine art delivery bay. A newly reimagined destination restaurant for museum guests to dine while visiting. The South entrance will welcome over 10k students annually for school tours and hands-on activities. The first level will also provide an additional studio classroom and guest parking.

The second level will contain 9,675 SF dedicated for permanent collections. 3,500 SF increase to the Center for Art + Environment and an upgraded office space for staff and volunteers. The third level to contribute an additional 5,000 SF for featured exhibitions, 85% increase in art collection storage space and a rooftop garden with skyline and mountain views.

Construction has commenced and the expansion is slated to be completed in 2025

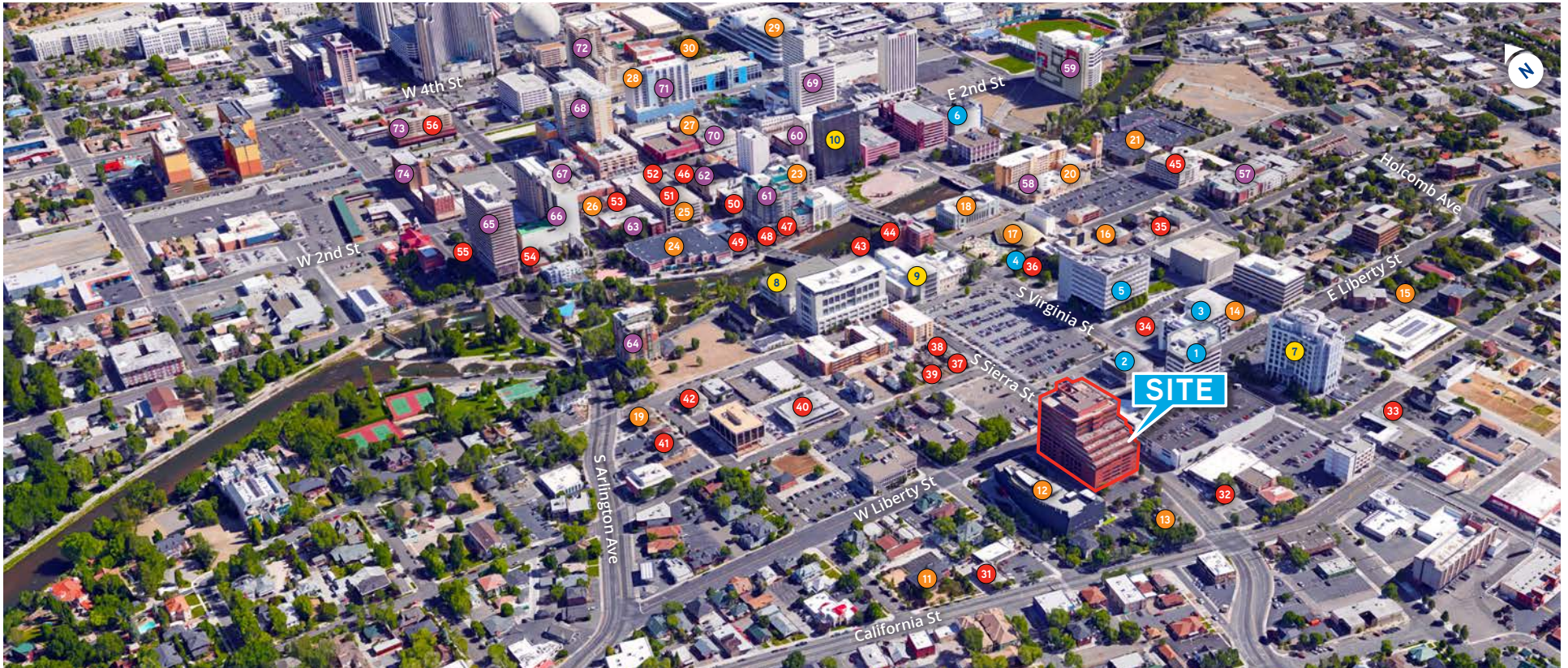


Proximity to Nevada Museum of Art



 Nevada Museum of Art

Surrounding Area



🏦 Banking

- 1 Meadows Bank
- 2 Nevada State Bank
- 3 US Bank
- 4 Chase Bank
- 5 Wells Fargo ATM
- 6 Nevada State Bank

🏛️ Courthouse

- 7 Bruce R. Thompson Courthouse & Federal Building
- 8 Reno Justice Court
- 9 Second Judicial District Court
- 10 Reno City Hall

! Entertainment

- 11 Arte Italia

- 12 Nevada Museum of Art & Chez Louie
- 13 Sundance Bookstore
- 14 Washoe County Library
- 15 Discovery Museum
- 16 Patagonia Outlet
- 17 Pioneer Center for Performing Arts
- 18 The Basement
- 19 Arts for All Nevada at the Lake Mansion
- 20 Bundox Bocce
- 21 National Automobile Museum
- 22 Greater Nevada Field
- 23 The Rack
- 24 Century Riverside Theatre

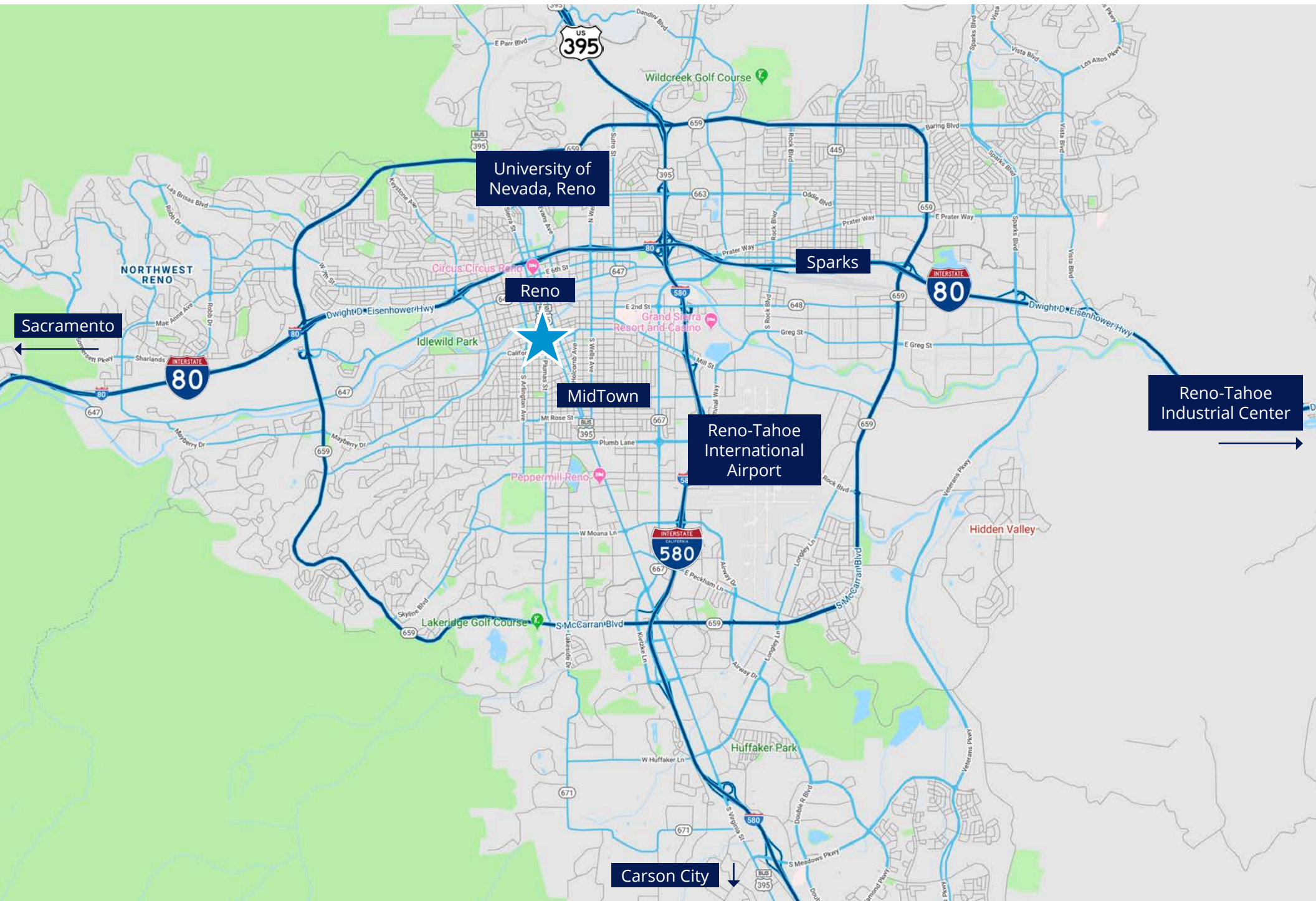
- 25 Escape Room
- 26 Crafted Palette
- 27 Siri's Casino
- 28 Cargo Concert Hall
- 29 National Bowling Stadium
- 30 A an Art
- ✂️ Eat/Drink**
- 31 Cheese Board
- 32 Bibo Coffee Company
- 33 Mexcal
- 34 Starbucks
- 35 The Dropout Bike Shop & Hub Coffee Roasters
- 36 La Famiglia Italian & Blue Fin Poke
- 37 Old Granite Street Eatery

- 38 RedRock Bar
- 39 Royce
- 40 Washoe Public House
- 41 Pignic Pub & Patio
- 42 Great Basin Community Food Co-Op
- 43 The Eddy
- 44 Wild River Grille
- 45 Foxy Olive
- 46 Pizza Reno
- 47 Campo, Reef Sushi & Sake
- 48 Sierra St Kitchen & Cocktails, Ole Bridge Pub
- 49 Pizanos Pizza, Antonio's Mexican Grill, The Stick Sports Lounge
- 50 Liberty Food & Wine Exchange
- 51 Silver Peak

- 52 Thai Corner Café
- 53 5 Star Saloon, West Street Wine Bar
- 54 Our Bar
- 55 Imperial Bar and Lounge
- 56 Bab Café, The Urban Market
- 🏠 Live/Stay**
- 57 City Center Apartments
- 58 The Renaissance
- 59 Courtyard Marriott
- 60 Cal Neva
- 61 The Palladio
- 62 Riverboat Hotel
- 63 The Ross Apartments
- 64 Park Tower

- 65 Arlington Towers
- 66 Plaza Resort Club
- 67 Colonial Garden Court Apt-Homes
- 68 The Montage
- 69 Harrah's
- 70 The Nugget
- 71 Whitney Peak Hotel
- 72 ElDorado Resort Casino
- 73 3rd Street Flats
- 74 WorldMark Reno

Regional Location



The Colliers logo consists of the word "Colliers" in a white serif font, centered within a blue rounded rectangle. Below the rectangle are three horizontal stripes in yellow, red, and blue from top to bottom.

Colliers

5520 Kietzke Lane, Suite 300
Reno, NV 89511
+1 775 823 9666
Colliers.com/Reno

Melissa Molyneux SIOR, CCIM

Executive Vice President
+1 775 823 4674 Direct
+1 775 762 7990 Cell
Melissa.Molyneux@colliers.com
NV Lic BS.0144599.LLC

Jason Hallahan

Associate
+1 775 333 6969 Direct
+1 775 287 5610 Cell
Jason.Hallahan@colliers.com
NV Lic S.0200644



This document/email has been prepared by Colliers for advertising and general information only. Colliers makes no guarantees, representations or warranties of any kind, expressed or implied, regarding the information including, but not limited to, warranties of content, accuracy and reliability. Any interested party should undertake their own inquiries as to the accuracy of the information. Colliers excludes unequivocally all inferred or implied terms, conditions and warranties arising out of this document and excludes all liability for loss and damages arising there from. This publication is the copyrighted property of Colliers and /or its licensor(s). © 2026. All rights reserved. This communication is not intended to cause or induce breach of an existing listing agreement.