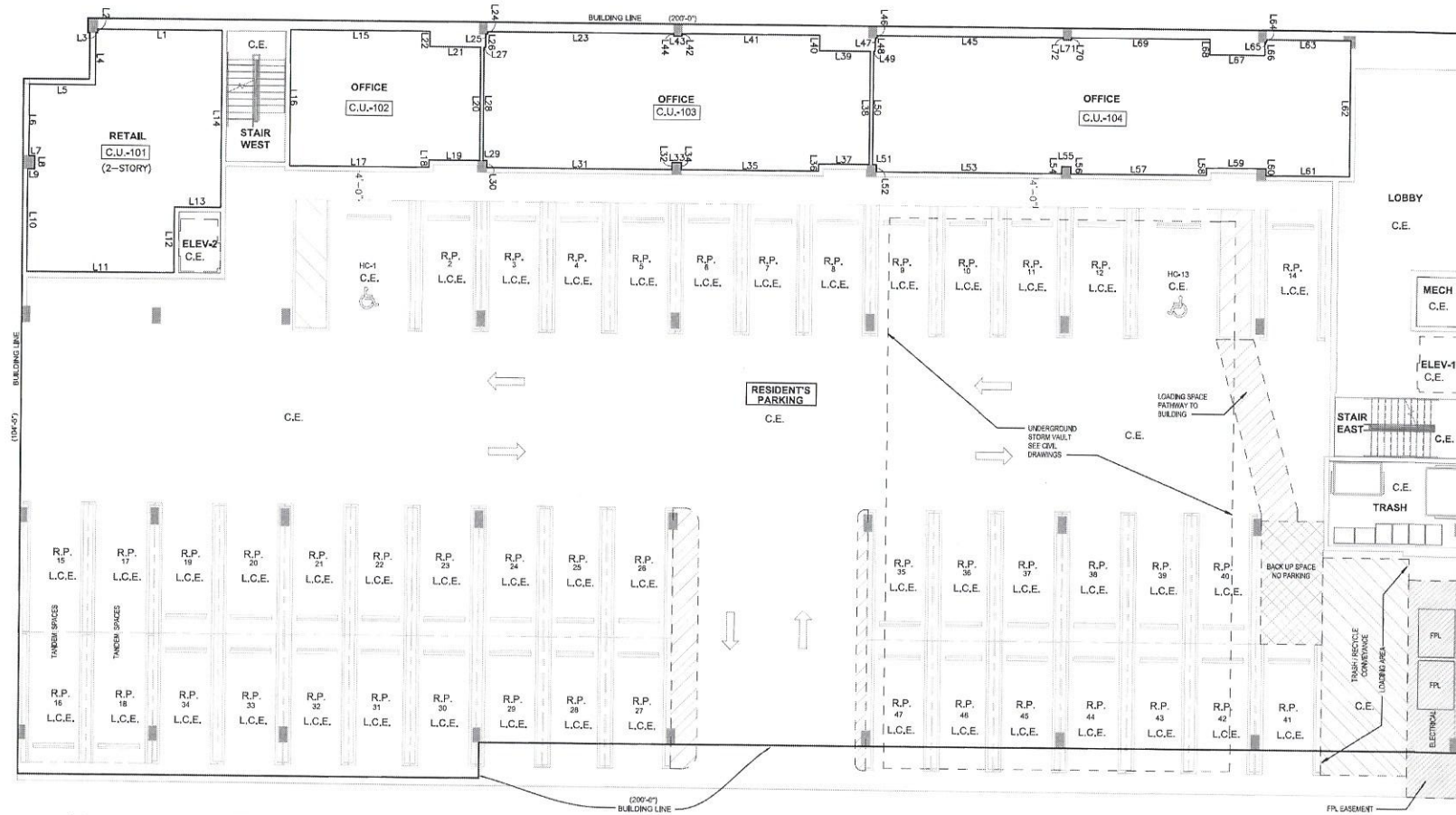


332 COCOANUT, A CONDOMINIUM

IN SECTION 19, TOWNSHIP 36 SOUTH, RANGE 18 EAST,
CITY OF SARASOTA, SARASOTA COUNTY, FLORIDA

CONDOMINIUM BOOK _____ PAGE _____
SHEET No. 3 OF 10 SHEETS



- LEGEND:**
- UNIT BOUNDARY LINE
 - C.E. - COMMON ELEMENT
 - C.U. - COMMERCIAL UNIT
 - C.C.E. - COMMERCIAL COMMON ELEMENT
 - L.C.E. - LIMITED COMMON ELEMENT
 - R.U. - RESIDENTIAL UNIT
 - R.C.E. - RESIDENTIAL COMMON ELEMENT
 - R.P. - RESIDENTIAL PARKING
 - ELEV - ELEVATOR
 - MECH - MECHANICAL / HVAC EQUIPMENT
 - HC - HANDICAPPED PARKING

- NOTES:**
1. INTERIOR DIMENSIONS ARE MORE OR LESS DIMENSIONS TAKEN FROM THE ARCHITECTURAL PLANS, AS NOTED ON SHEET 1. OVERALL UNIT DIMENSIONS AND EXTERIOR DIMENSIONS WILL BE VERIFIED.
 2. ELEVATIONS WERE TAKEN FROM THE ARCHITECTURAL PLANS, SHEETS A6.00 & A6.01.

**GRAPHIC FLOOR PLAN
(FIRST FLOOR)**

PALMER LAND SURVEYING, L.L.C.

Professional Land Surveyors
1437 Tallevast Road
Sarasota, FL 34243
(941) 527-0142 (ph) * (941) 538-6799 (fax)