

# TWENTY-SIX MILE ROAD LENOX TWP., MICHIGAN

LAND FOR LEASE  
2.29 Acres Available

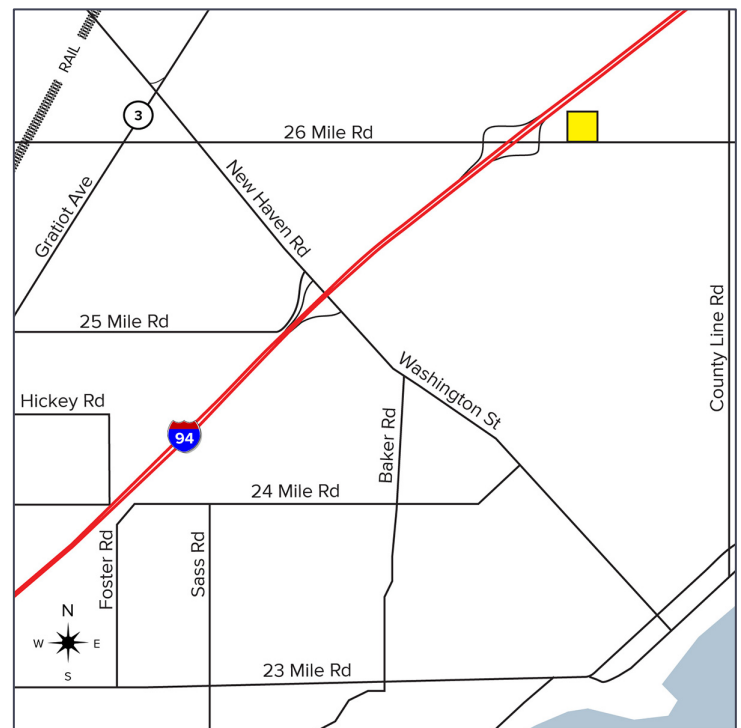


**SIGNATURE  
ASSOCIATES**  
KNOW SIGNATURE | KNOW RESULTS



## PROPERTY FEATURES

- 2.29 +/- acres available
- Zoned general commercial, PUD
- Tremendous location off the I-94 exit ramp and in front of Meijer
- Available for ground lease
- Surrounding trade area is experiencing significant growth
- Sewer, water, and gas utilities on site
- Contact broker for pricing information



For more information, please contact:

**BRUCE BAJA**  
(248) 799 3177  
bbaja@signatureassociates.com

**PETER VANDERKAAY**  
(248) 359 3837  
pvanderkaay@signatureassociates.com

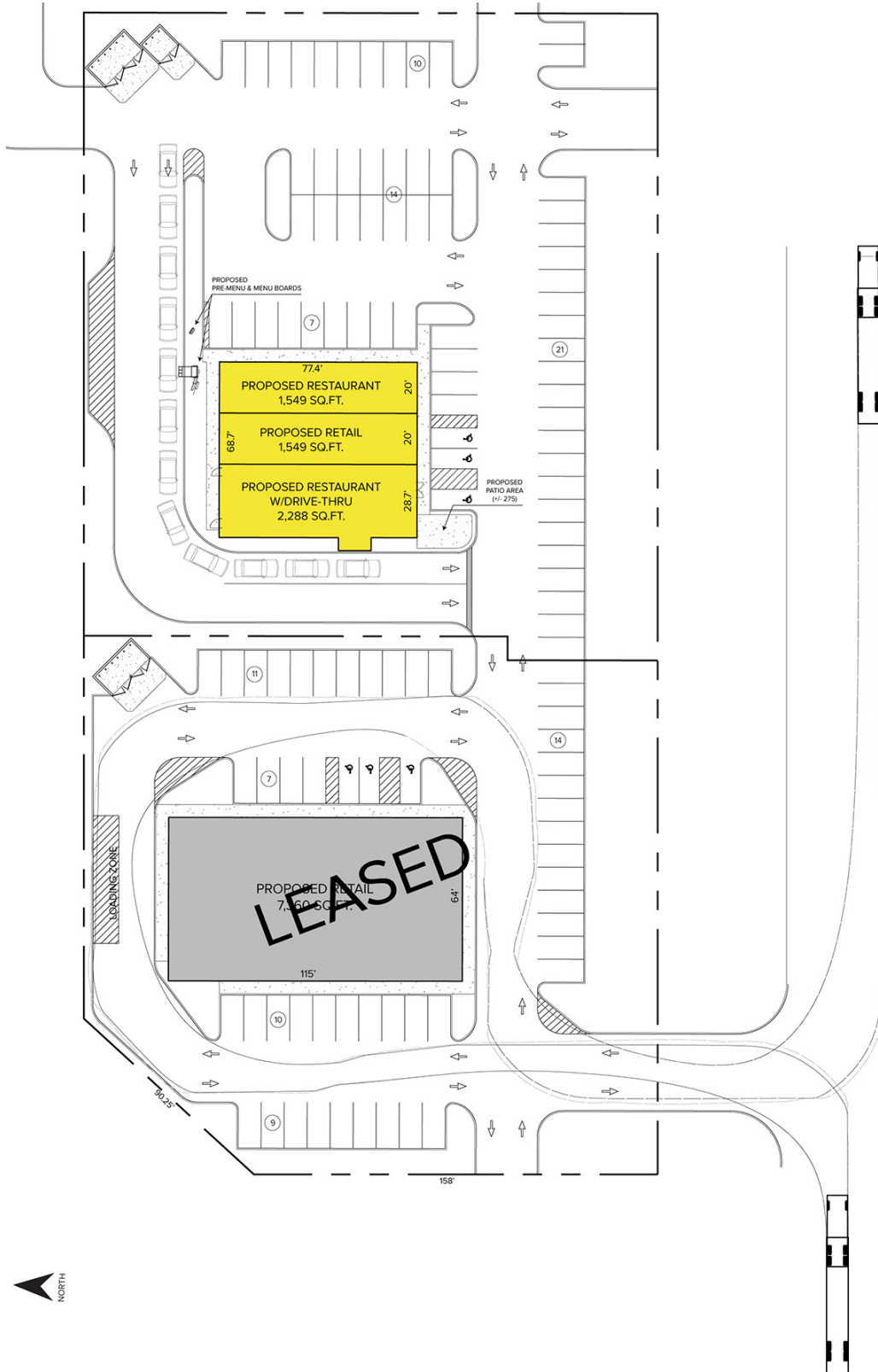
**SIGNATURE ASSOCIATES**  
One Towne Square, Suite 1200  
Southfield, MI 48076  
www.signatureassociates.com

# Twenty-Six Mile Road – Lenox Twp., Michigan

## Land For Lease

2.29  
Acres  
AVAILABLE

### Site Plan



For more information, please contact:

**BRUCE BAJA**  
(248) 799 3177  
bbaja@signatureassociates.com

**PETER VANDERKAAY**  
(248) 359 3837  
pvanderkaay@signatureassociates.com

**SIGNATURE ASSOCIATES**  
One Towne Square, Suite 1200  
Southfield, MI 48076  
www.signatureassociates.com

# Twenty-Six Mile Road – Lenox Twp., Michigan

## Land For Lease

2.29  
Acres  
AVAILABLE

### Labeled Aerial



#### DEMOGRAPHICS

	POPULATION	MED. HH INCOME
1 MILE	2,196	\$67,318
3 MILE	26,520	\$81,002
5 MILE	56,690	\$78,007

#### TRAFFIC COUNTS (TWO-WAY)

24,784	26 Mile Rd. West of County Line Rd.
25,759	26 Mile Rd. and I-94
34,054	I-94 N. of 26 Mile Rd.
45,939	I-94 S. of 26 Mile Rd.

For more information, please contact:

**BRUCE BAJA**  
(248) 799 3177  
bbaja@signatureassociates.com

**PETER VANDERKAAY**  
(248) 359 3837  
pvanderkaay@signatureassociates.com

**SIGNATURE ASSOCIATES**  
One Towne Square, Suite 1200  
Southfield, MI 48076  
www.signatureassociates.com