

655

MCINTYRE STREET (ALSO KNOWN AS 15611 W. 6TH AVE.)
GOLDEN, CO 80401 | UNINCORPORATED JEFFERSON COUNTY



South side facing Highway 6

OWNER/USER INDUSTRIAL

PRICE REDUCED For Sale: ~~\$5,600,000~~ **\$4,950,000**

For Lease: Inquire with Broker

655 McIntyre Street, a.k.a. 15611 W. 6th Avenue, offers the unique features of visibility to Highway 6, a high bay clear span warehouse, drive-in and dock high loading, fenced yard and ease of access to Highway 6, Highway 40 and I-70.

PROPERTY DETAILS

Building SF 24,810 SF per County Record

Site Size 1.39 Acres

Clear Height 30' - 33'6"

Electrical 600 Amp 480 Volt 3 Phase

Loading 1 - 14' x 14' Drive-In

1 - 12' x 14' Drive-In

1 - 12' x 14' Dock High

Zoning Jefferson County I-3

Highway Exposure I-70 Traffic Counts: 77,000 vehicles per day

Hwy. 6 Traffic Counts: 62,000 vehicles per day

Offered Exclusively By:

CHRIS BALL

Broker

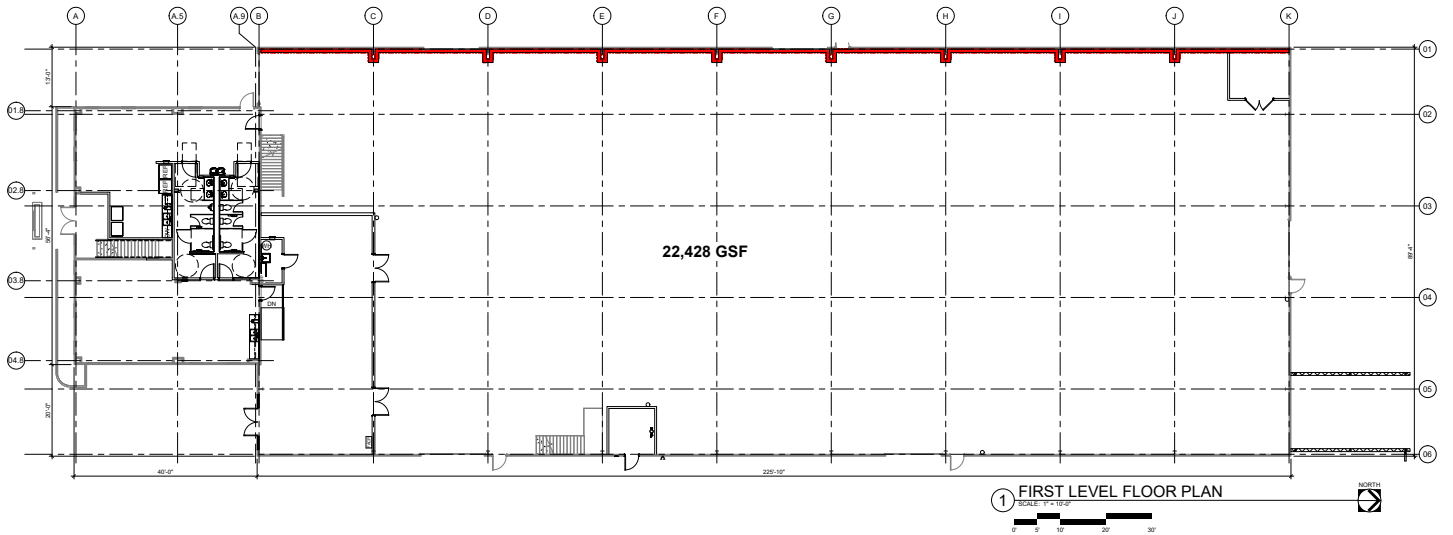
303.332.6954

chris@ballprop.com

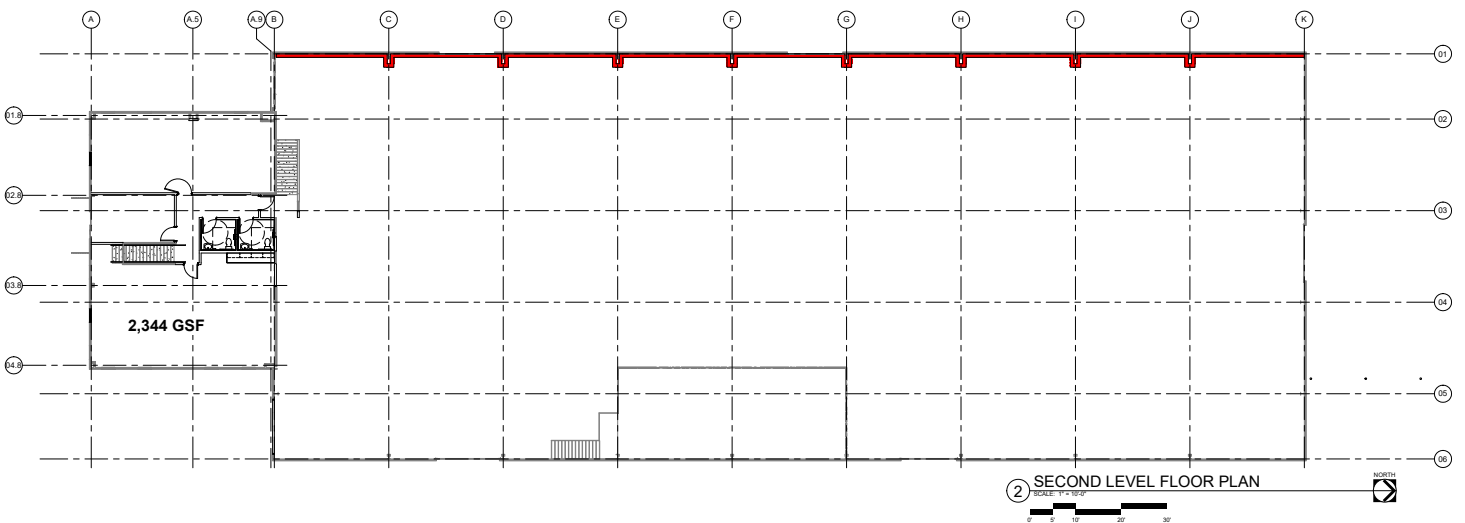
655

MCINTYRE STREET (ALSO KNOWN AS 15611 W. 6TH AVE.)

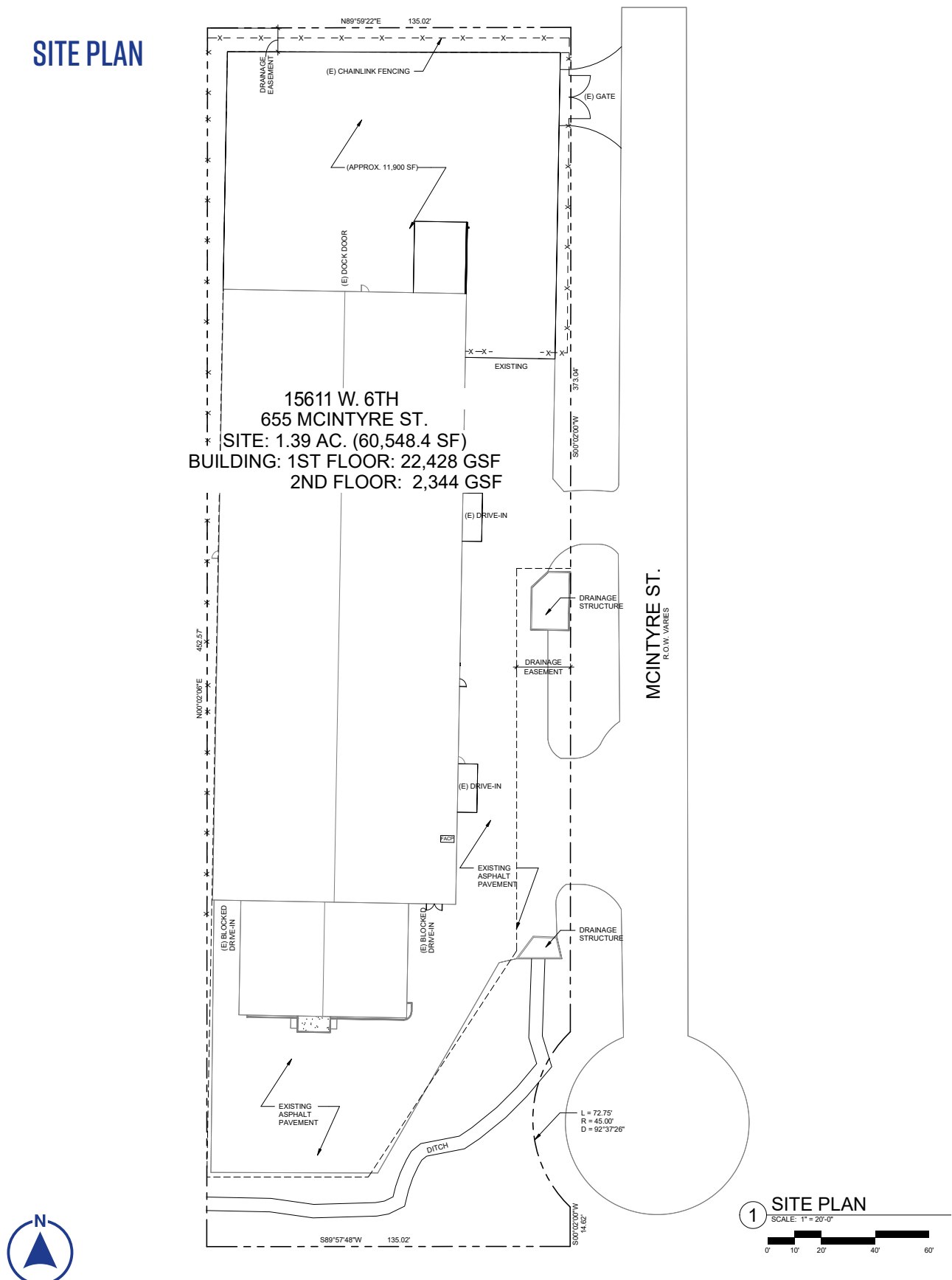
FIRST FLOOR



SECOND FLOOR

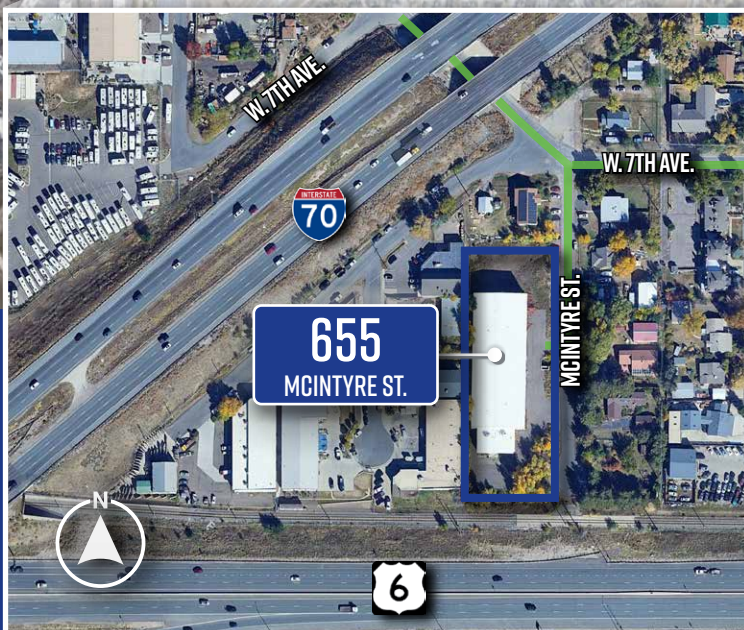
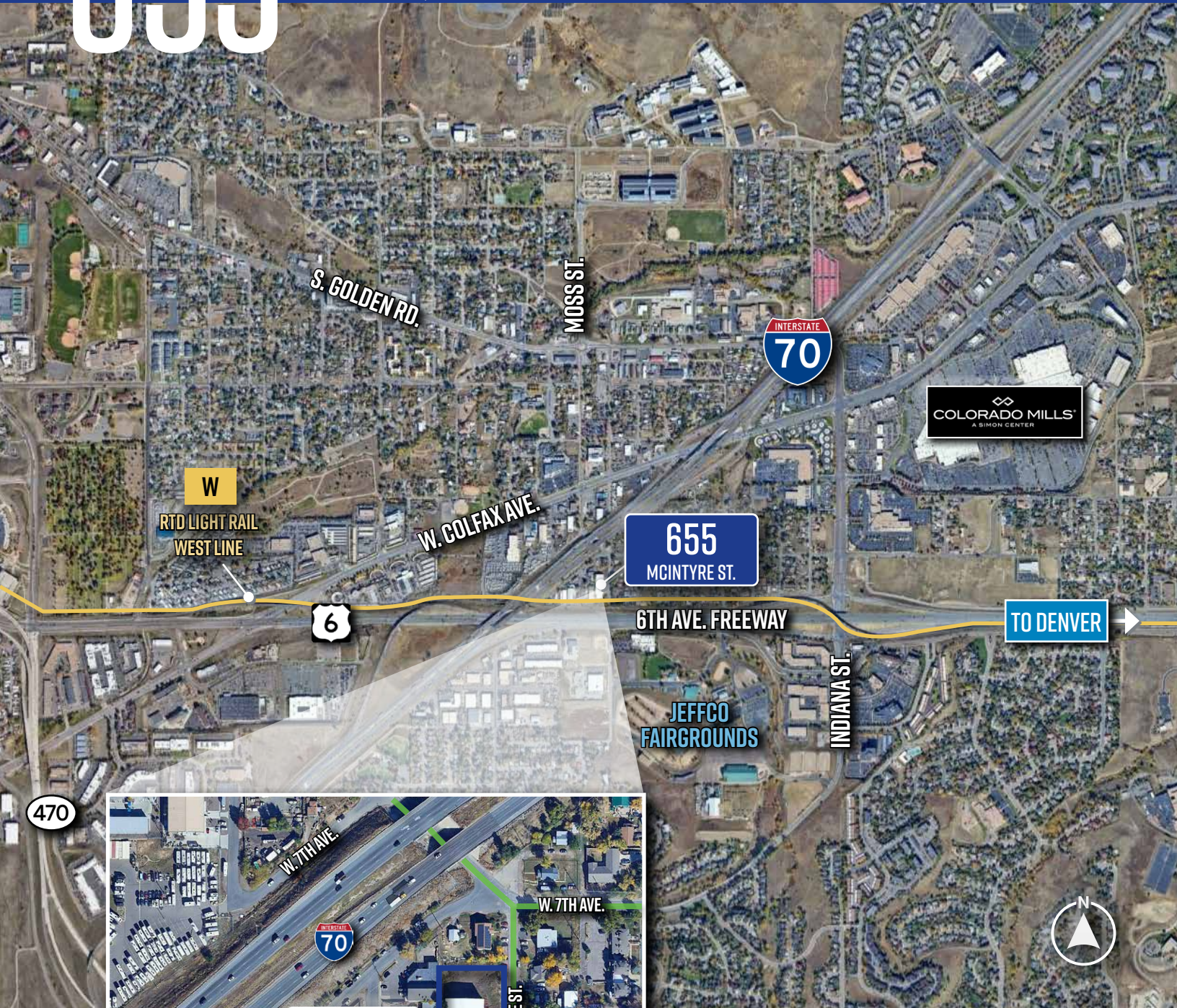


SITE PLAN



655

MCINTYRE STREET (ALSO KNOWN AS 15611 W. 6TH AVE.)
GOLDEN, CO 80401 | UNINCORPORATED JEFFERSON COUNTY



CONTACT



CHRIS BALL

Broker

303.332.6954

chris@ballprop.com