

# NEW CONSTRUCTION FLEX BUILDING

1497 NE Success Drive, Jensen Beach FL 34957



**NEW CONSTRUCTION**

**FOR SALE | Starting at \$615,000**

**JEREMIAH BARON  
& CO**

**COMMERCIAL REAL ESTATE**

500 SE Osceola Street  
Stuart FL, 34994  
[www.commercialrealestatellc.com](http://www.commercialrealestatellc.com)

**Matt Crady**  
772.286.5744 Office  
772.260.1655 Mobile  
[mcrady@commercialrealestatellc.com](mailto:mcrady@commercialrealestatellc.com)

# PROPERTY OVERVIEW

- A premier new-construction 7,150 SF industrial flex building coming to NE Savannah Road in Jensen Beach.
- Centrally positioned among established industrial users and directly beside a newly built apartment community, the property offers strong visibility and exceptional accessibility.
- Designed with versatility in mind, the building offers unit configurations starting at 1,756 SF, allowing it to accommodate multiple light-industrial users and making it an attractive opportunity for investors or owner-users seeking a modern, adaptable asset in a growing market.



PRICE	\$615,000–\$2,450,000
UNIT SIZE	1,756–1,880 SF
FUTURE BUILDING SIZE	7,150 SF
FRONTAGE	140'
TRAFFIC COUNT	8,400 ADT
ACREAGE	0.5 AC
ZONING	LI
LAND USE	Industrial
PARCEL ID	28-37-41-011-000-00010-0

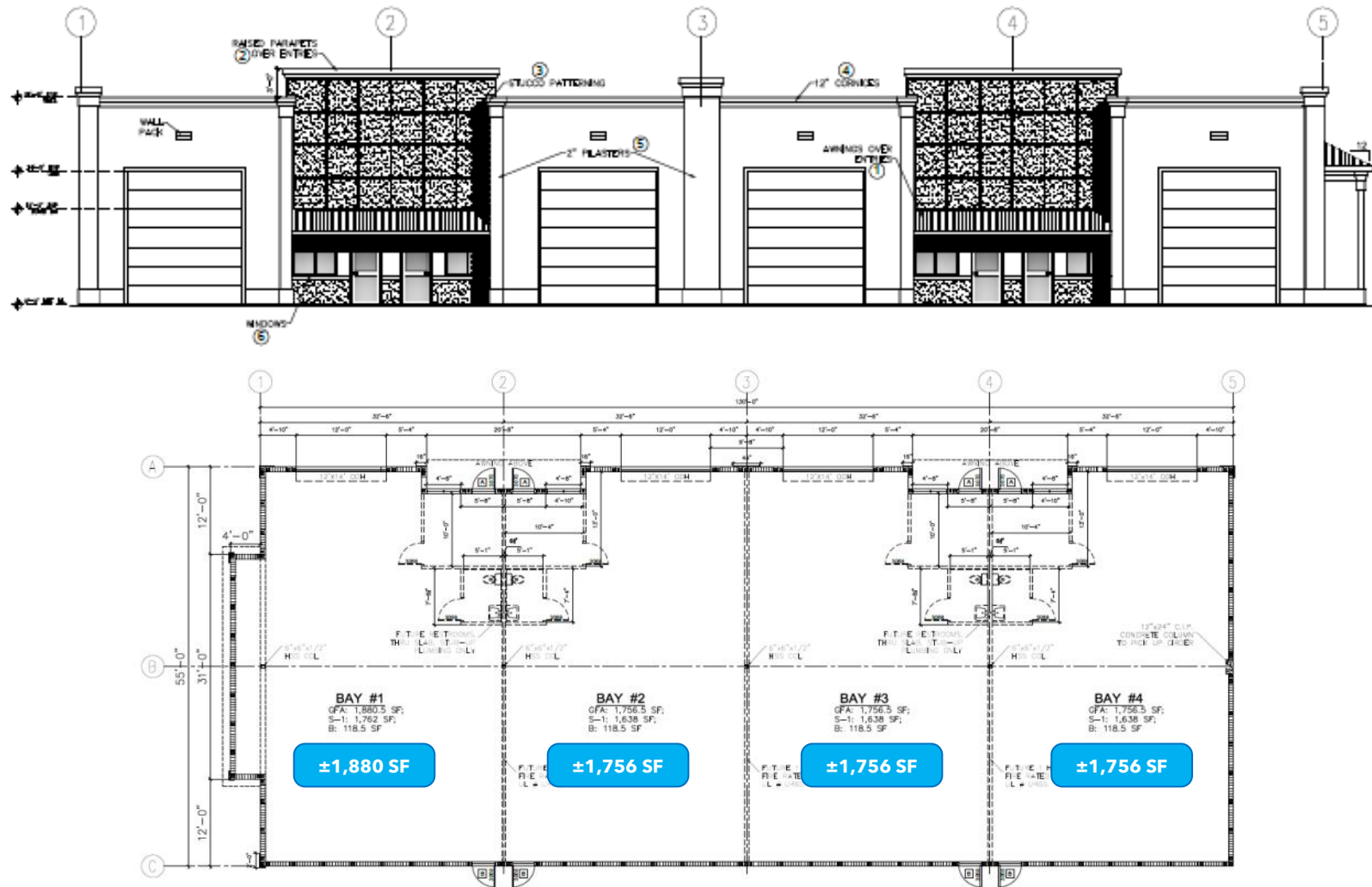
NO WARRANTY OR REPRESENTATION, EXPRESS OR IMPLIED, IS MADE AS TO THE ACCURACY OF THE INFORMATION CONTAINED HEREIN, AND THE SAME IS SUBMITTED SUBJECT TO ERRORS, OMISSIONS, CHANGE OF PRICE, RENTAL OR OTHER CONDITIONS, PRIOR SALE, LEASE OR FINANCING, OR WITHDRAWAL WITHOUT NOTICE, AND OF ANY SPECIAL LISTING CONDITIONS IMPOSED BY OUR PRINCIPALS NO WARRANTIES OR REPRESENTATIONS ARE MADE AS TO THE CONDITION OF THE PROPERTY OR ANY HAZARDS CONTAINED THEREIN ARE ANY TO BE IMPLIED.

**JEREMIAH BARON  
& CO**  
COMMERCIAL REAL ESTATE

500 SE Osceola Street  
Stuart FL, 34994  
[www.commercialrealestatellc.com](http://www.commercialrealestatellc.com)

**Matt Crady**  
772.286.5744 Office  
772.260.1655 Mobile  
[mcrady@commercialrealestatellc.com](mailto:mcrady@commercialrealestatellc.com)

# BUILDING 1—FLOOR PLAN & ELEVATION

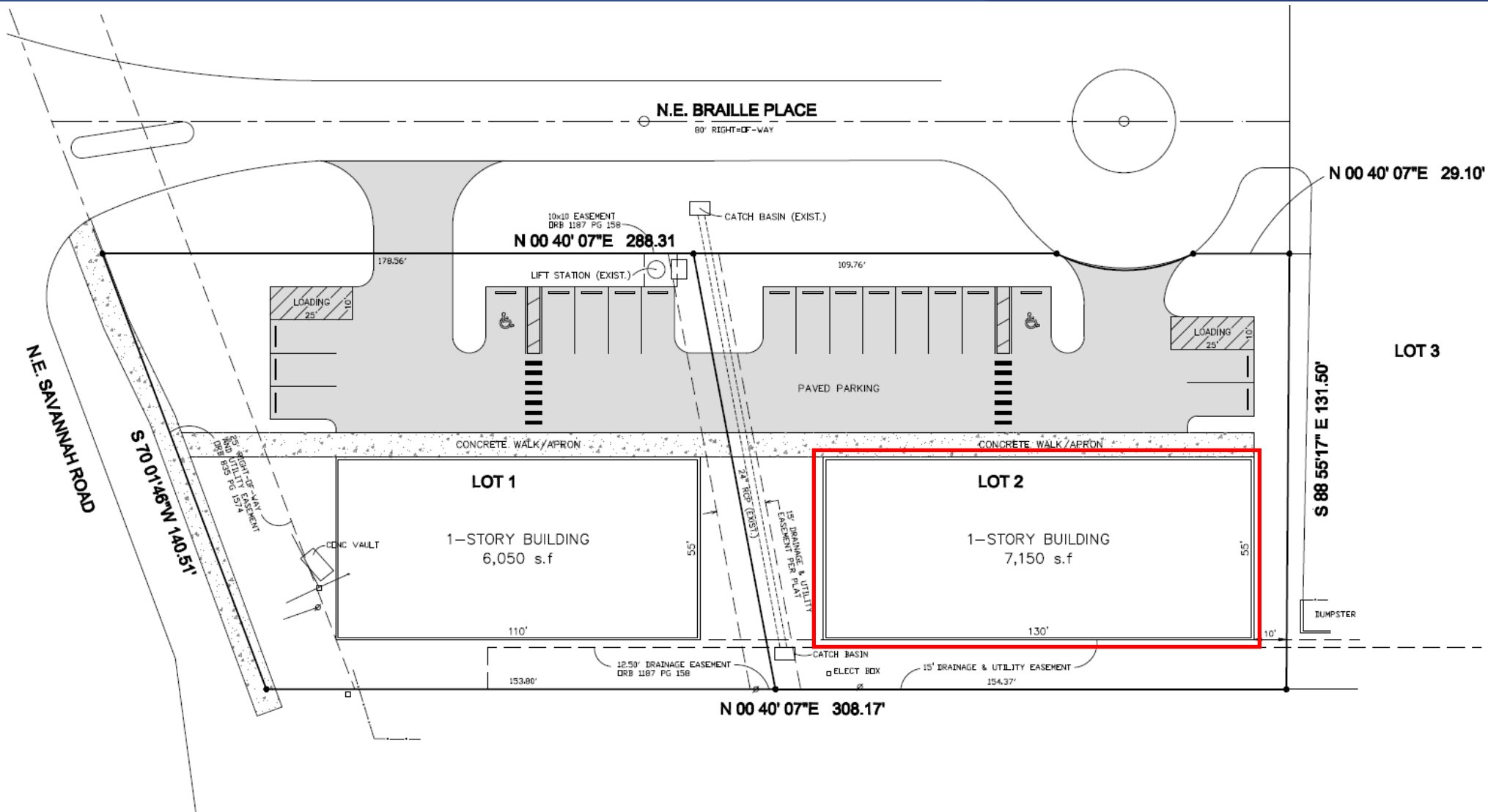


**JEREMIAH BARON  
& CO**  
COMMERCIAL REAL ESTATE

500 SE Osceola Street  
Stuart FL, 34994  
[www.commercialrealestatellc.com](http://www.commercialrealestatellc.com)

**Matt Crady**  
772.286.5744 Office  
772.260.1655 Mobile  
[mcrady@commercialrealestatellc.com](mailto:mcrady@commercialrealestatellc.com)

# SITE PLAN



**JEREMIAH BARON  
& CO**  
COMMERCIAL REAL ESTATE

500 SE Osceola Street  
Stuart FL, 34994  
[www.commercialrealestatellc.com](http://www.commercialrealestatellc.com)

**Matt Crady**  
772.286.5744 Office  
772.260.1655 Mobile  
[mcrady@commercialrealestatellc.com](mailto:mcrady@commercialrealestatellc.com)



# DEMOGRAPHICS

Population	1 mile	3 miles	5 miles
2020 Population	5,080	35,852	92,810
2024 Population	5,611	38,573	105,971
2029 Population Projection	5,979	40,971	117,727
Annual Growth 2020-2024	2.6%	1.9%	3.5%
Annual Growth 2024-2029	1.3%	1.2%	2.2%
Median Age	52.6	54.9	55.4
Bachelor's Degree or Higher	30%	32%	34%
U.S. Armed Forces	0	26	108

Income	1 mile	3 miles	5 miles
Avg Household Income	\$77,966	\$86,136	\$89,178
Median Household Income	\$54,383	\$57,638	\$64,164
< \$25,000	530	3,846	8,935
\$25,000 - 50,000	653	4,333	10,695
\$50,000 - 75,000	466	2,678	7,789
\$75,000 - 100,000	190	1,778	5,784
\$100,000 - 125,000	286	1,738	4,854
\$125,000 - 150,000	135	1,008	2,914
\$150,000 - 200,000	155	1,105	2,888
\$200,000+	150	1,606	4,274

**JEREMIAH BARON  
& CO**  
COMMERCIAL REAL ESTATE

500 SE Osceola Street  
Stuart FL, 34994  
[www.commercialrealestatellc.com](http://www.commercialrealestatellc.com)

**Matt Crady**  
772.286.5744 Office  
772.260.1655 Mobile  
[mcrady@commercialrealestatellc.com](mailto:mcrady@commercialrealestatellc.com)

# ZONING INFORMATION

USE CATEGORY	LI	Limited impact industries	P	Professional, scientific and technical services	P
Administrative services, not-for-profit	P	Biomedical research	P	Reproducing magnetic and optical media	P
Educational institutions	P	Bioscience research	P	Research and development laboratories and facilities, including alternative energy	P
Business and professional offices	P	Computer and electronic components research and assembly	P	Scientific and technical consulting services	P
Commercial amusements, indoor	P	Computer and electronic products research and assembly	P	Simulation training	P
Commercial amusements, outdoor	P	Computer programming/software research	P	Technology centers	P
Commercial day care	P	Computer system design	P	Telecommunications research	P
Construction industry trades	P	Electromedical apparatus research and assembly	P	Testing laboratories	P
Construction sales and services	P	Electronic equipment research and assembly	P		
General retail sales and services	P	Laser research and assembly	P		
Golf driving ranges	P	Lens research	P		
Hotels, motels, resorts and spas	P	Management, scientific and technical services	P		
Kennels, commercial	P	Marine Research	P		
Limited retail sales and services	P	Medical and dental labs	P		
Medical services	P	Medical equipment assembly	P		
Pain management clinics	P	Optical equipment assembly	P		
Trades and skilled services	P	Optical instruments assembly	P		
Vehicular sales and service	P	Optoelectronics assembly	P		
Vehicular service and maintenance	P	Pharmaceutical products research	P		
Veterinary medical services	P	Precision instrument assembly	P		
Wholesale trades and services	P				

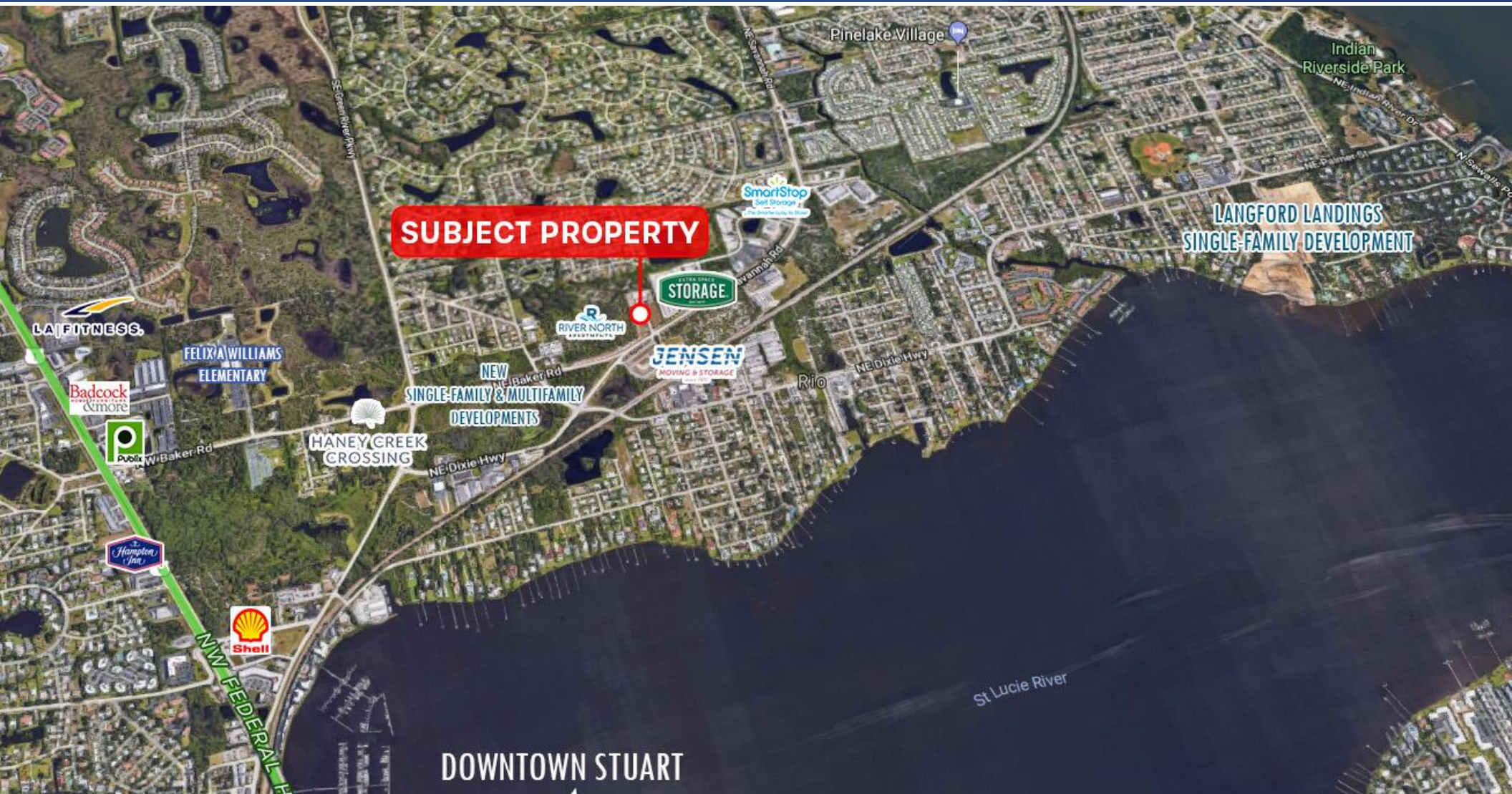
**JEREMIAH BARON  
& CO**  
COMMERCIAL REAL ESTATE

500 SE Osceola Street  
Stuart FL, 34994  
[www.commercialrealestatellc.com](http://www.commercialrealestatellc.com)

**Matt Crady**  
772.286.5744 Office  
772.260.1655 Mobile  
[mcrady@commercialrealestatellc.com](mailto:mcrady@commercialrealestatellc.com)



# TRADE AREA MAP



**JEREMIAH BARON  
& CO**

**COMMERCIAL REAL ESTATE**

500 SE Osceola Street  
Stuart FL, 34994  
[www.commercialrealestatellc.com](http://www.commercialrealestatellc.com)

**Matt Crady**  
772.286.5744 Office  
772.260.1655 Mobile  
[mcrady@commercialrealestatellc.com](mailto:mcrady@commercialrealestatellc.com)