

6± AC LAND | RETAIL | MEDICAL | OFFICE | RESIDENTIAL

# COMMERCIAL LAND IN ONE OF THE NATION'S FASTEST-GROWING COUNTIES

Spartanburg/Greenville MSA | 1841 Cannons Campground Rd., Spartanburg, SC



## PROPERTY FEATURES

- Monument signage on Cannons Campground Road
- Shared full access with Family Dollar
- New public schools and booming residential growth (Ryan Homes, DR Horton, Trust Homes)
- Spartanburg Medical Center (Mary Black Campus), a 747-bed facility, located across the street
- **Land Area: 6± Acres**
- Available for sale, groundlease or BTS

## DEMOGRAPHICS

	1 MILE	3 MILES	5 MILES	7 MILES
<b>POPULATION</b>	2,533	28,537	73,278	125,218
<b>NO. OF HOUSEHOLDS</b>	1,223	12,481	29,755	50,115
<b>AVG. HH INCOME</b>	\$69,060	\$89,431	\$74,804	\$74,521
<b>EMPLOYEE POPULATION</b>	3,316	19,899	44,941	60,979

## JOIN AREA RETAILERS/BUSINESSES



For more information, contact:

**LAUREN A. WATKINS | ASSOCIATE**  
843 224 3990  
lwatkins@twinriverscap.com

**NICKI JASSY | BROKER**  
843 973 8235  
nicki@twinriverscap.com

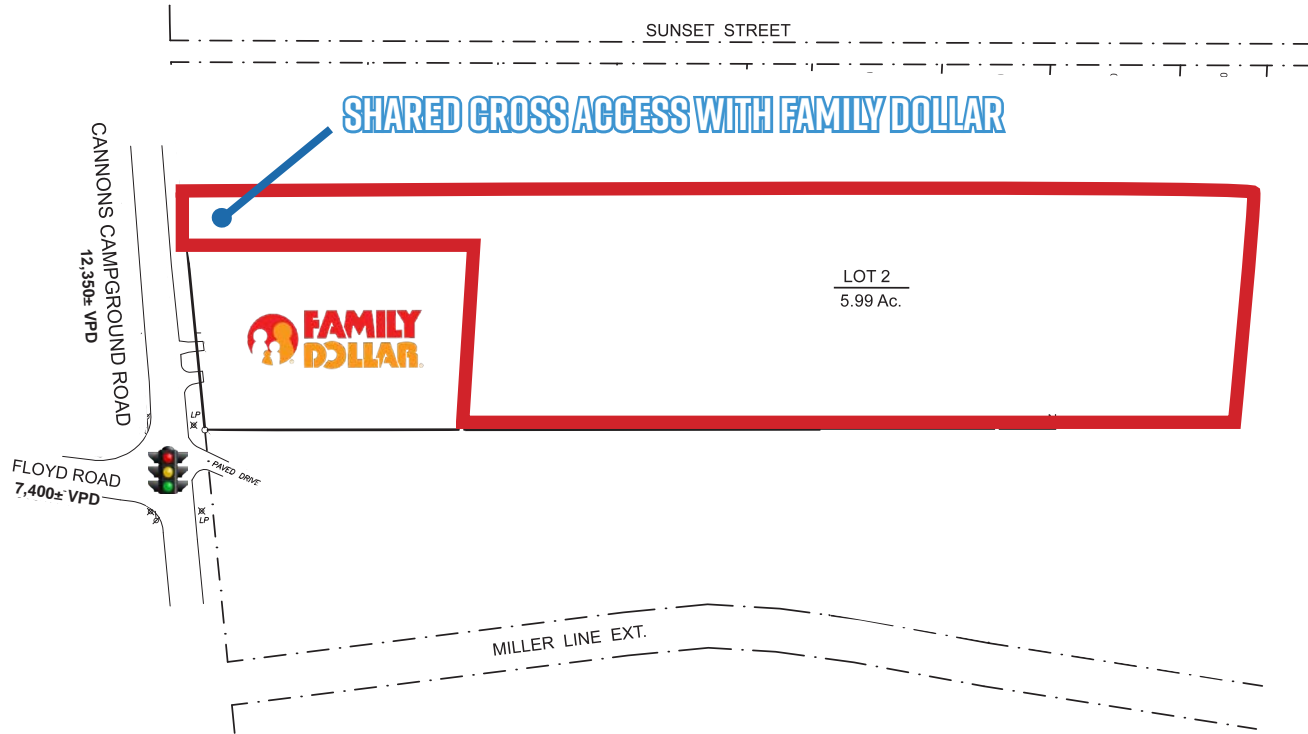
**TWIN RIVERS CAPITAL**  
656 Ellis Oak Avenue, Suite 201  
Charleston, SC 29412  
twinriverscap.com



6± AC LAND | RETAIL | MEDICAL | OFFICE | RESIDENTIAL

# COMMERCIAL LAND IN ONE OF THE NATION'S FASTEST-GROWING COUNTIES

Spartanburg/Greenville MSA | 1841 Cannons Campground Rd., Spartanburg, SC



For more information, contact:

**LAUREN A. WATKINS | ASSOCIATE**

843 224 3990

lwatkins@twinriverscap.com

**NICKI JASSY | BROKER**

843 973 8235

nicki@twinriverscap.com

**TWIN RIVERS CAPITAL**

656 Ellis Oak Avenue, Suite 201

Charleston, SC 29412

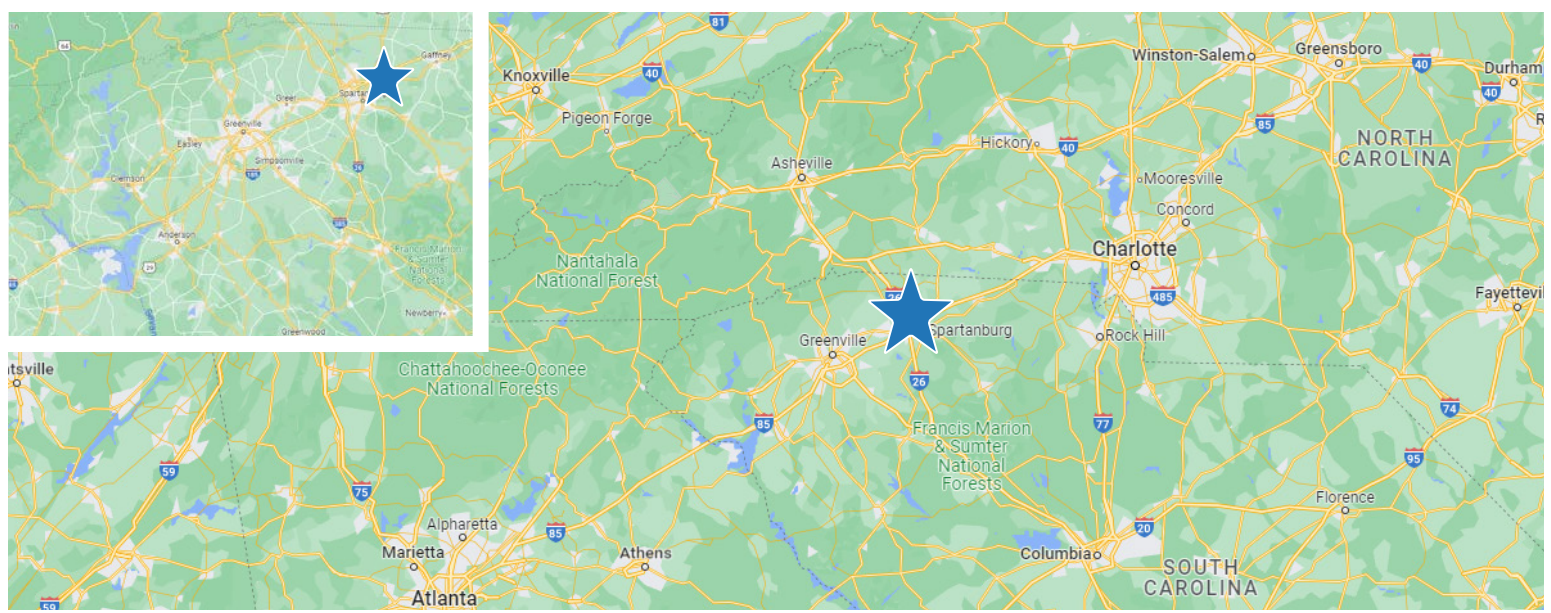
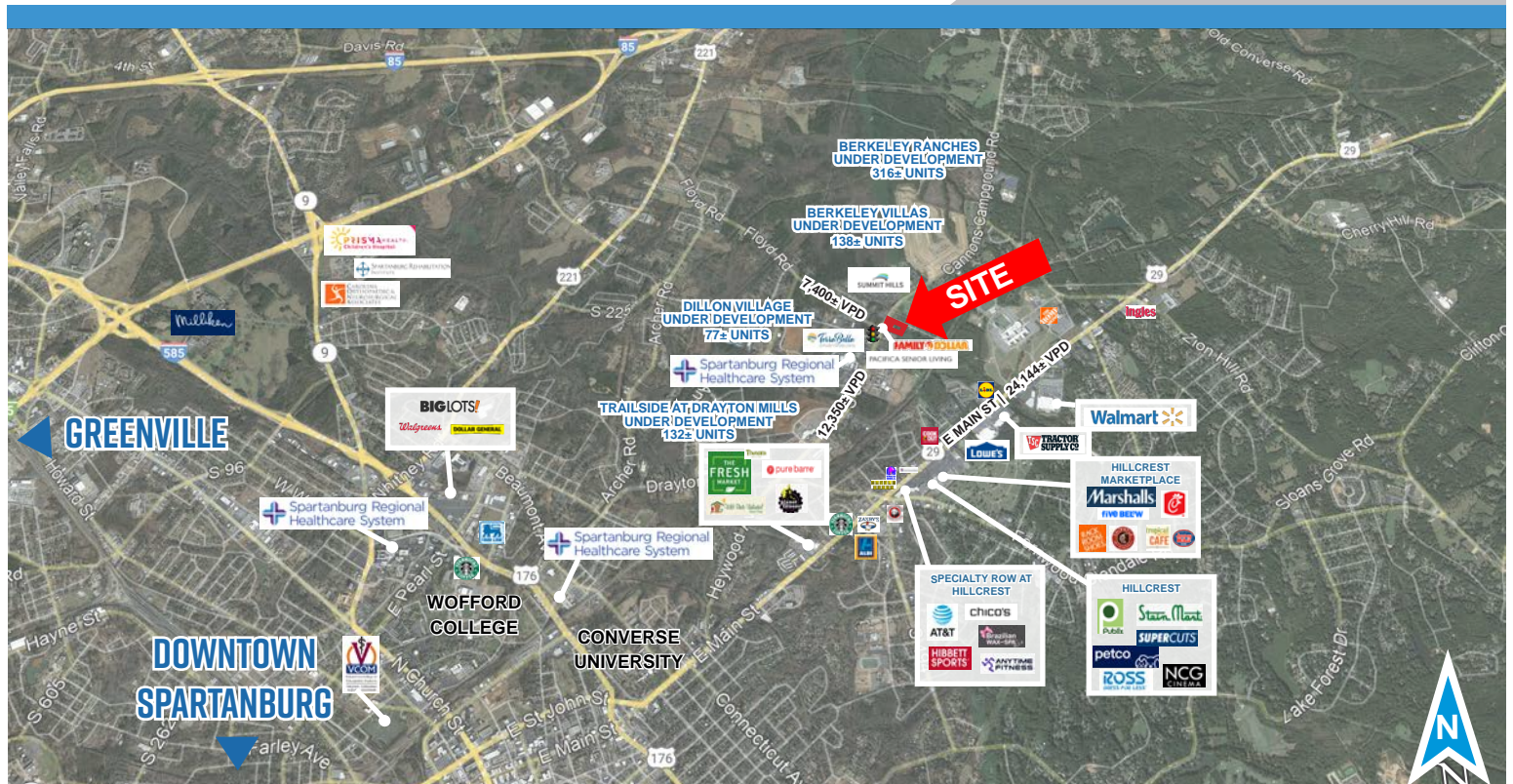
twinriverscap.com



6± AC LAND | RETAIL | MEDICAL | OFFICE | RESIDENTIAL

# COMMERCIAL LAND IN ONE OF THE NATION'S FASTEST-GROWING COUNTIES

Spartanburg/Greenville MSA | 1841 Cannons Campground Rd., Spartanburg, SC



For more information, contact:

**LAUREN A. WATKINS | ASSOCIATE**  
 843 224 3990  
 lwatkins@twinriverscap.com

**NICKI JASSY | BROKER**  
 843 973 8235  
 nicki@twinriverscap.com

**TWIN RIVERS CAPITAL**  
 656 Ellis Oak Avenue, Suite 201  
 Charleston, SC 29412  
 twinriverscap.com