

211 SCHERMERHORN STREET

BETWEEN HOYT & BOND STREETS | DOWNTOWN BROOKLYN

Coming Soon



luckin coffee

A C G

HOYT / SCHERMERHORN
STATION

2,804,195 RIDERS
ANNUALLY

TWO ELEVEN

211 SCHERMERHORN STREET

BETWEEN HOYT & BOND STREETS | DOWNTOWN BROOKLYN

PROPERTY DETAILS

SIZE: 4,200 SF Ground Floor
3,425 SF Lower Level

FRONTAGE: 20'

CEILING HEIGHT: 12' Ground
13' Lower Level

POSSESSION: Immediate

ASKING RENT: Upon Request

TRANSPORTATION: 2 3 A C G

HIGHLIGHTS

- Glass frontage
- Dedicated elevator
- Situated at the base of a 48-unit condo building
- Neighboring tenants include:
Ace Hotel, Chick-fil-A, Dallas BBQ, Devocion, Hilton, IHop, Luckin Coffee, Maison Sun, Pure Barre, Solidcore, Taim

INTERIORS:



All information supplied in this marketing presentation and/or flyer is from sources deemed reliable and is furnished subject to errors, omissions, modifications, removal of listings from sale/lease and to any listing condition. Any square footage, dimensions, floor plans and/or technical data set forth are approximations and are subject to further elaboration/confirmation.

211 SCHERMERHORN STREET

BETWEEN HOYT & BOND STREETS | DOWNTOWN BROOKLYN



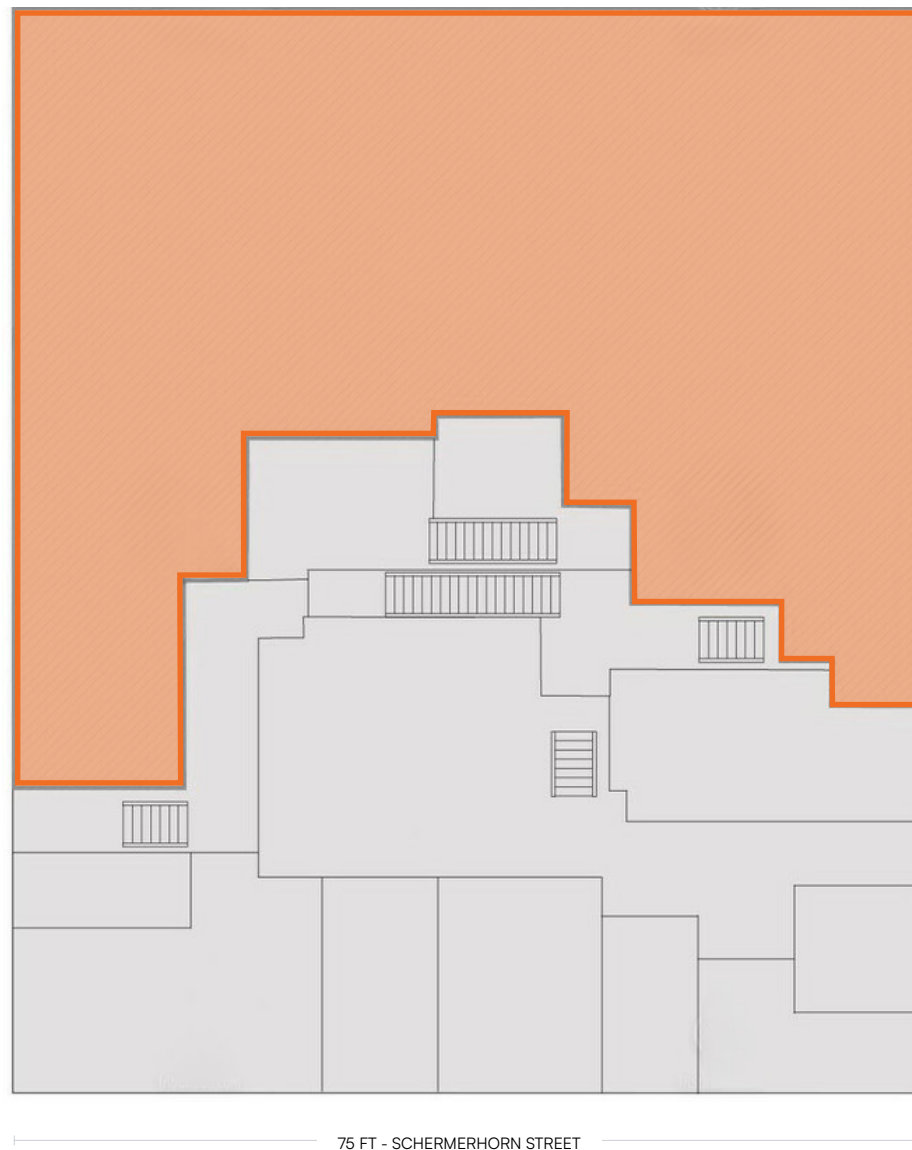
211 SCHERMERHORN STREET

BETWEEN HOYT & BOND STREETS | DOWNTOWN BROOKLYN

FLOOR PLANS:
GROUND FLOOR - 4,200 SF



LOWER LEVEL - 3,425 SF



All information supplied in this marketing presentation and/or flyer is from sources deemed reliable and is furnished subject to errors, omissions, modifications, removal of listings from sale/lease and to any listing condition. Any square footage, dimensions, floor plans and/or technical data set forth are approximations and are subject to further elaboration/confirmation.

211 SCHERMERHORN STREET

BETWEEN HOYT & BOND STREETS | DOWNTOWN BROOKLYN

FOR MORE INFORMATION,
PLEASE CONTACT:

ELLIOT STEIN

917.993.1442 | EStein@ksrny.com

MAYER GHONOJA

212.548.3945 | MG@ksrny.com

BARRY FISHBACH

917.273.6752 | Fischbach@ksrny.com

