

FOR SUBLEASE

Call Center/Assembly Building

2800 GATEWAY DRIVE

Pompano Beach, FL 33069

PRESENTED BY:

LES BYRON, SIOR, CCIM

C: 954.401.4713

les@svncr.com

KEITH KIDWELL, SIOR, CCIM

C: 954.234.8777

keith@svncr.com

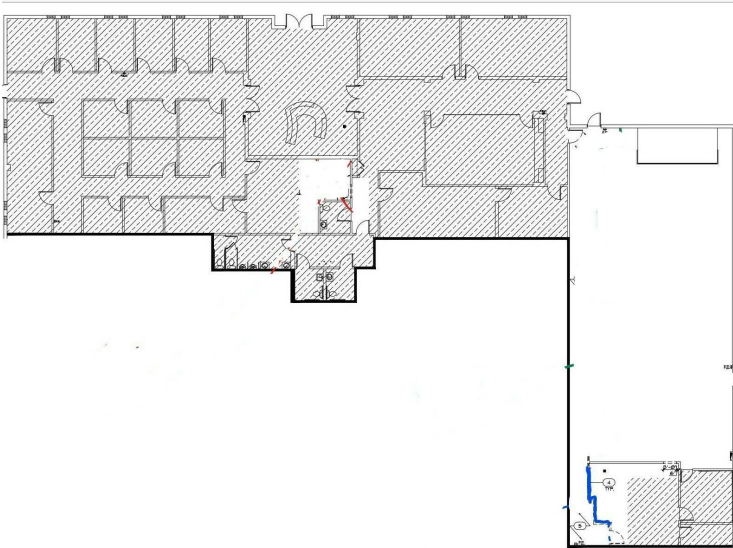
STEVE DAVIS

C: 954.650.7824

steve@svncr.com



PROPERTY SUMMARY



OFFERING SUMMARY

AVAILABLE SF:	4,000 SF, 6,000 SF to 12,000 SF
BUILDING SIZE:	40,000 SF
SUBLEASE TERM:	February 28, 2027
SUBLEASE RATE:	\$16.00 PSF GROSS

LES BYRON, SIOR, CCIM
C: 954.401.4713
les@svncr.com

KEITH KIDWELL, SIOR, CCIM
C: 954.234.8777
keith@svncr.com

STEVE DAVIS
C: 954.650.7824
steve@svncr.com

PROPERTY OVERVIEW

Existing call center and assembly space for sublease. Total space features: lobby, 15 offices, 5 large assembly meeting rooms, kitchen/break room and large open area. Located in the Gateway Industrial Park/Cypress Creek Uptown District, easy access to I-95 and the Florida Turnpike. Ready for immediate occupancy. Flexible occupancy.

PROPERTY HIGHLIGHTS

- Ample Parking (6:1,000)
- Fire Sprinklers
- Private Offices/Open Space
- Conference Room/Kitchenette