

# FOR LEASE

510-514 Jungermann Rd, St. Peters, MO, 63376


## PROPERTY SUMMARY

### STAND ALONE OFFICE

- Office Building with 2 spaces available for lease.
- High traffic area
- Tenant improvement allowance
- Large parking lot
- **510 Jungermann Rd - 2,500 sf**
  - Currently White Box Space. Excellent Spa or Salon Area with multiple water and drains.
- **514 Jungermann Rd - 1,400 sf**
  - Office, large atrium all glass Showroom, and Bathroom.
- **LEASE RATE:**  
**\$18.50 to \$19.50 psf**  
*per month with full service (minus janitorial)*



 Listing Agent **Doug Tinkham**

 Cell **636-262-5978**

 **tinkham@shockleycommercial.com**



501 First Capital Dr. Suite 5,  
St. Charles MO 63301



Office **636-946-9753**



**www.shockleycommercial.com**

# 510 JUNGERMANN RD.

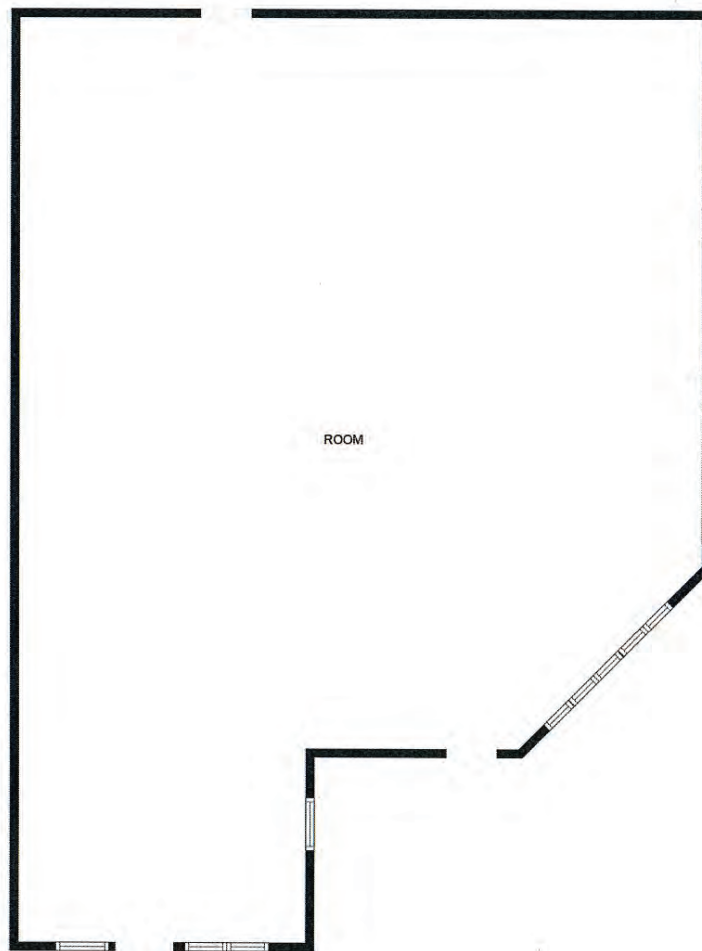
---



- **510 JUNGERMANN RD**  
**2,500 sf**

Currently White Box Space.  
Excellent Spa or Salon Area with  
multiple water and drains.

- **LEASE RATE at**  
**\$18.50 to \$19.50 psf**  
per month with full service  
(minus janitorial)



# 514 JUNGERMANN RD.

---



- **514 JUNGERMANN RD**  
**1,400 sf**

Office and large atrium all glass  
Showroom, and bathroom.

- **LEASE RATE at**  
**\$18.50 to \$19.50 psf**  
per month with full service  
(minus janitorial)

