

# FOR LEASE

## 60 ROBERTS VILLAGE COURT, UNIT #401



2929 Plummer Cove Rd., Suite 2  
Jacksonville, FL 32223

Fruit Cove, FL 32259



### OFFERING SUMMARY

|               |                        |
|---------------|------------------------|
| Lease Rate:   | \$28.00 SF/yr (\$6.50) |
| Available SF: | 1,115 SF               |

### PROPERTY OVERVIEW

Brand new class A office condo in Northwest St Johns County. This beautiful office space has 4 offices, receptionist area, ADA compliant restroom and a break room. Contact us now to be the first tenant in this space.

### PROPERTY HIGHLIGHTS

- Welcoming reception/check-in area
- Four private and spacious offices
- ADA-compliant restroom for convenience
- Dedicated break area with cabinets and sink
- Ideal for professional office or medical use
- Class A office condo
- 1,115 sq. ft.

*PRESENTED BY:*

**ROCHELLE PIERSALL**

904.599.3480

rochelle@kinkadecommercial.com

EXECUTIVE SUMMARY

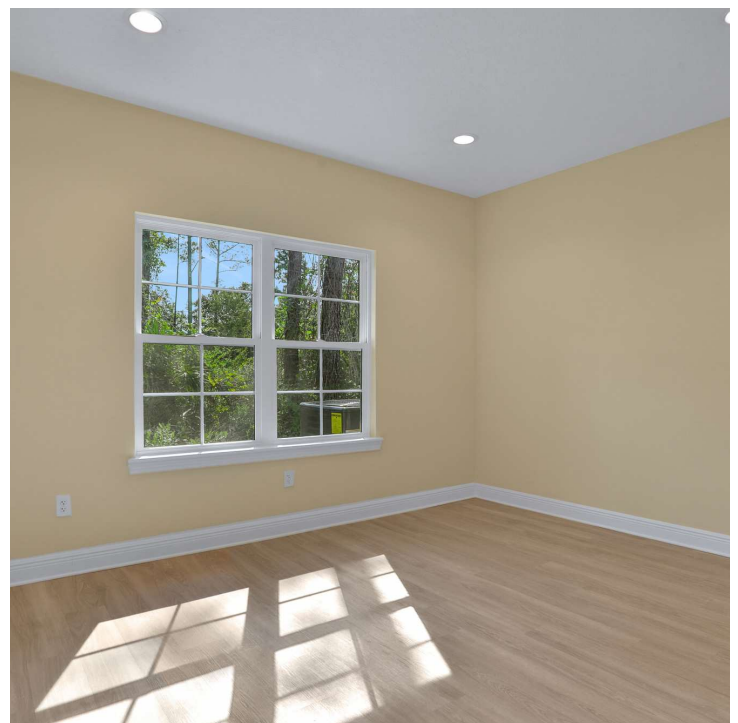
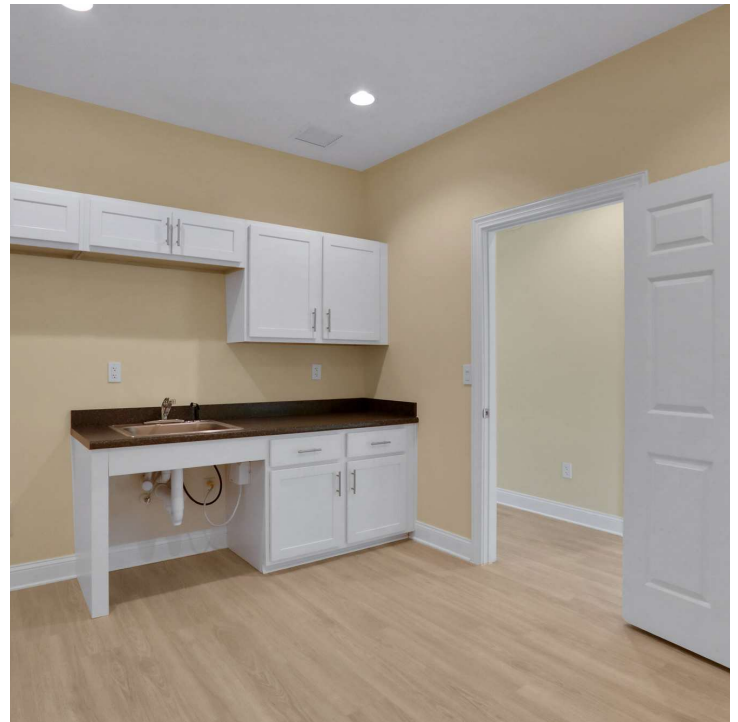
**FOR LEASE**

**60 ROBERTS VILLAGE COURT, UNIT #401**



2929 Plummer Cove Rd., Suite 2  
Jacksonville, FL 32223

Fruit Cove, FL 32259



**PRESENTED BY:**

**ROCHELLE PIERSALL**

904.599.3480

rochelle@kinkadecommercial.com

**ADDITIONAL PHOTOS**

**FOR LEASE**

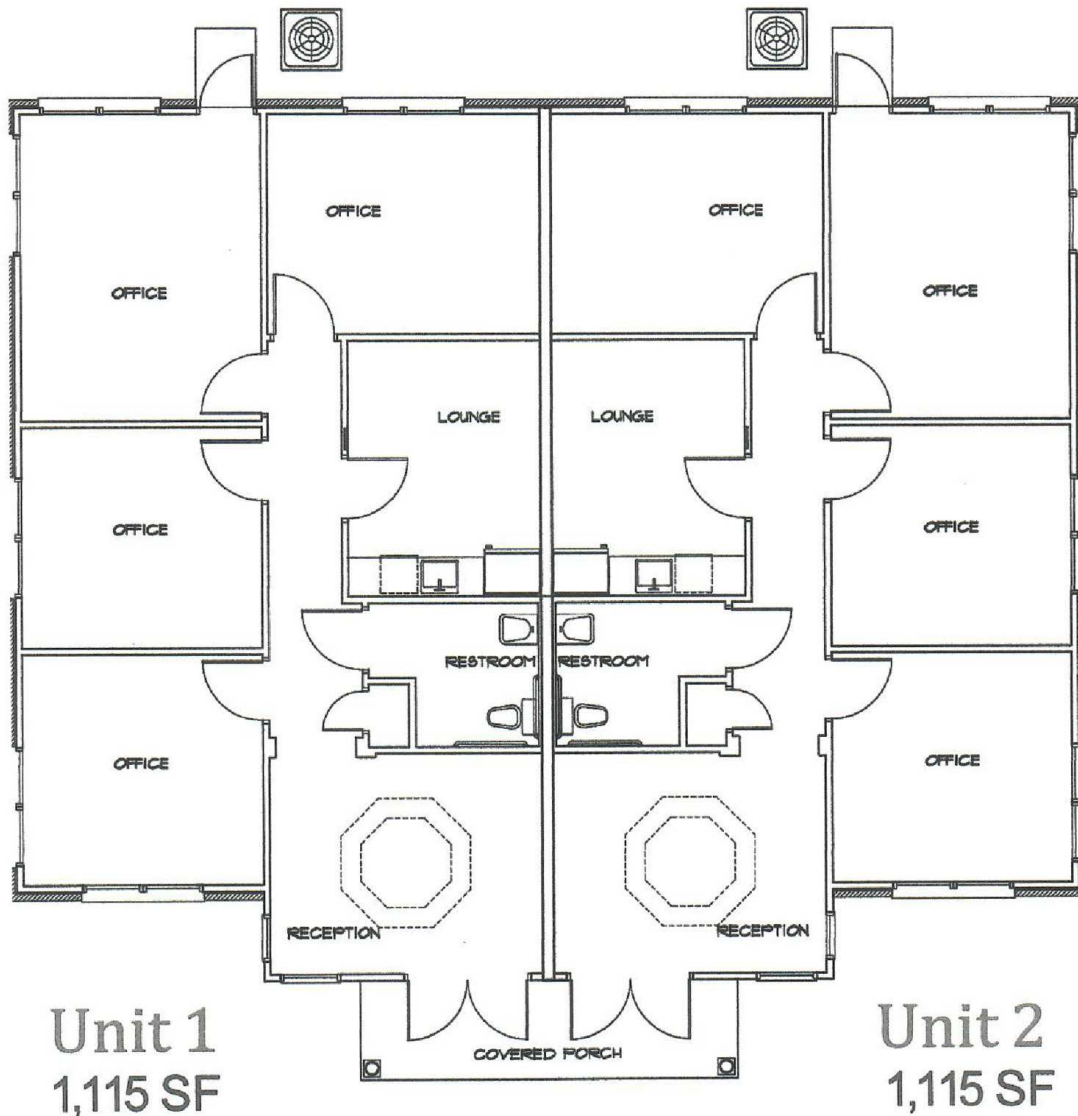
**60 ROBERTS VILLAGE COURT, UNIT #401**



2929 Plummer Cove Rd., Suite 2  
Jacksonville, FL 32223

Fruit Cove, FL 32259

**Exhibit A**



*PRESENTED BY:*

**ROCHELLE PIERSALL**

904.599.3480

rochelle@kinkadecommercial.com

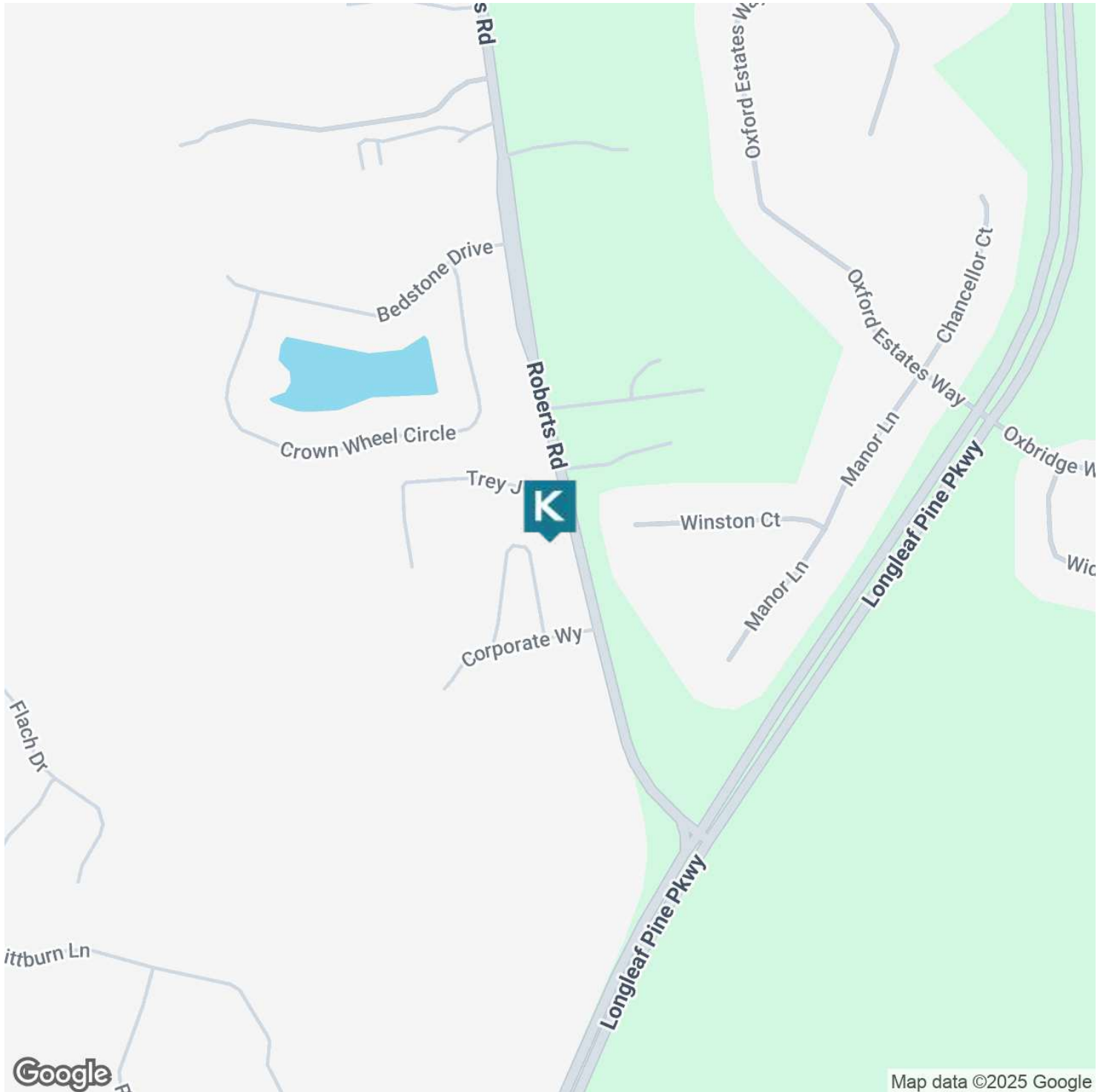
**FOR LEASE**

**60 ROBERTS VILLAGE COURT, UNIT #401**



2929 Plummer Cove Rd., Suite 2  
Jacksonville, FL 32223

Fruit Cove, FL 32259



*PRESENTED BY:*

**ROCHELLE PIERSALL**

904.599.3480

rochelle@kinkadecommercial.com

LOCATION MAP

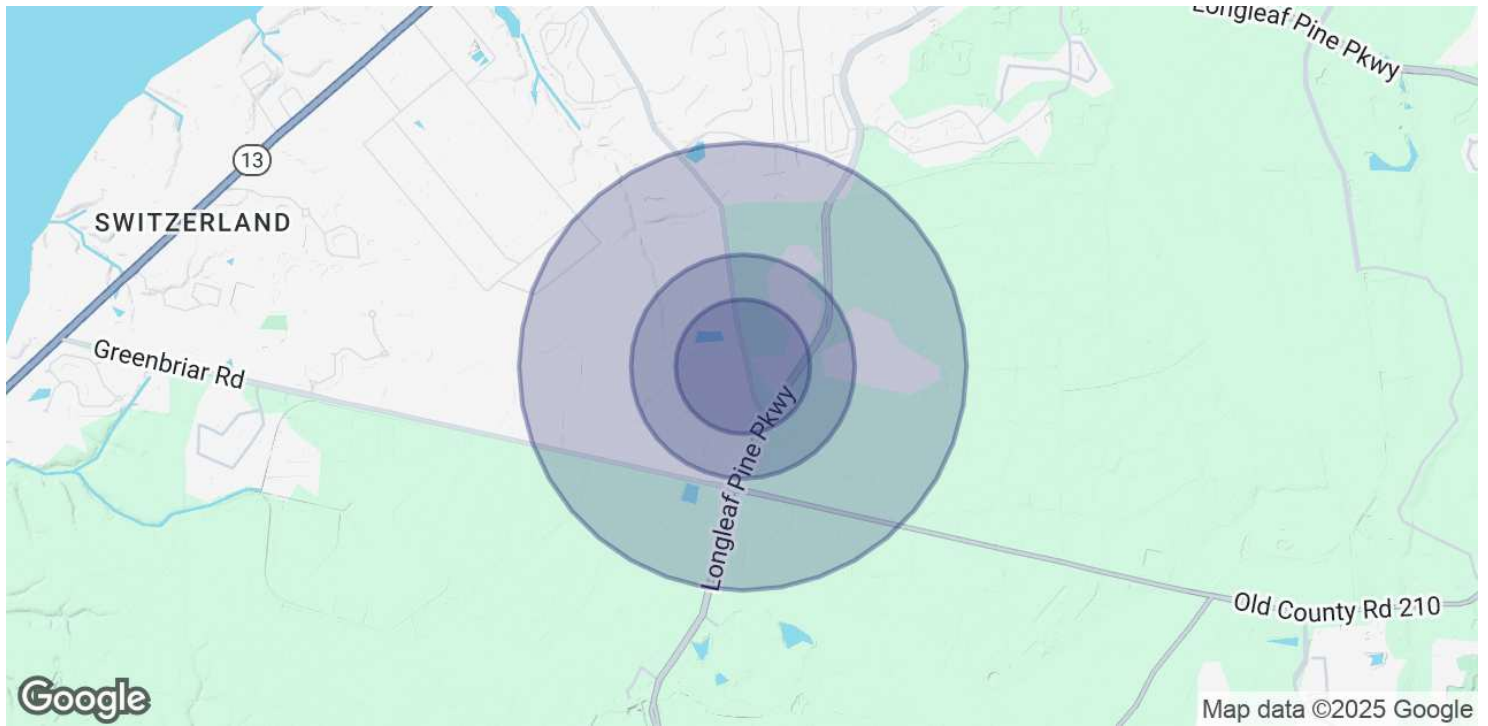
**FOR LEASE**

**60 ROBERTS VILLAGE COURT, UNIT #401**



2929 Plummer Cove Rd., Suite 2  
Jacksonville, FL 32223

Fruit Cove, FL 32259



| <b>POPULATION</b>    | <b>0.3 MILES</b> | <b>0.5 MILES</b> | <b>1 MILE</b> |
|----------------------|------------------|------------------|---------------|
| Total Population     | 534              | 1,096            | 2,892         |
| Average Age          | 39               | 39               | 39            |
| Average Age (Male)   | 39               | 39               | 39            |
| Average Age (Female) | 40               | 40               | 40            |

| <b>HOUSEHOLDS &amp; INCOME</b> | <b>0.3 MILES</b> | <b>0.5 MILES</b> | <b>1 MILE</b> |
|--------------------------------|------------------|------------------|---------------|
| Total Households               | 171              | 351              | 928           |
| # of Persons per HH            | 3.1              | 3.1              | 3.1           |
| Average HH Income              | \$154,184        | \$153,840        | \$157,591     |
| Average House Value            | \$524,156        | \$523,184        | \$535,039     |

Demographics data derived from AlphaMap

**PRESENTED BY:**

**ROCHELLE PIERSALL**

904.599.3480

rochelle@kinkadecommercial.com