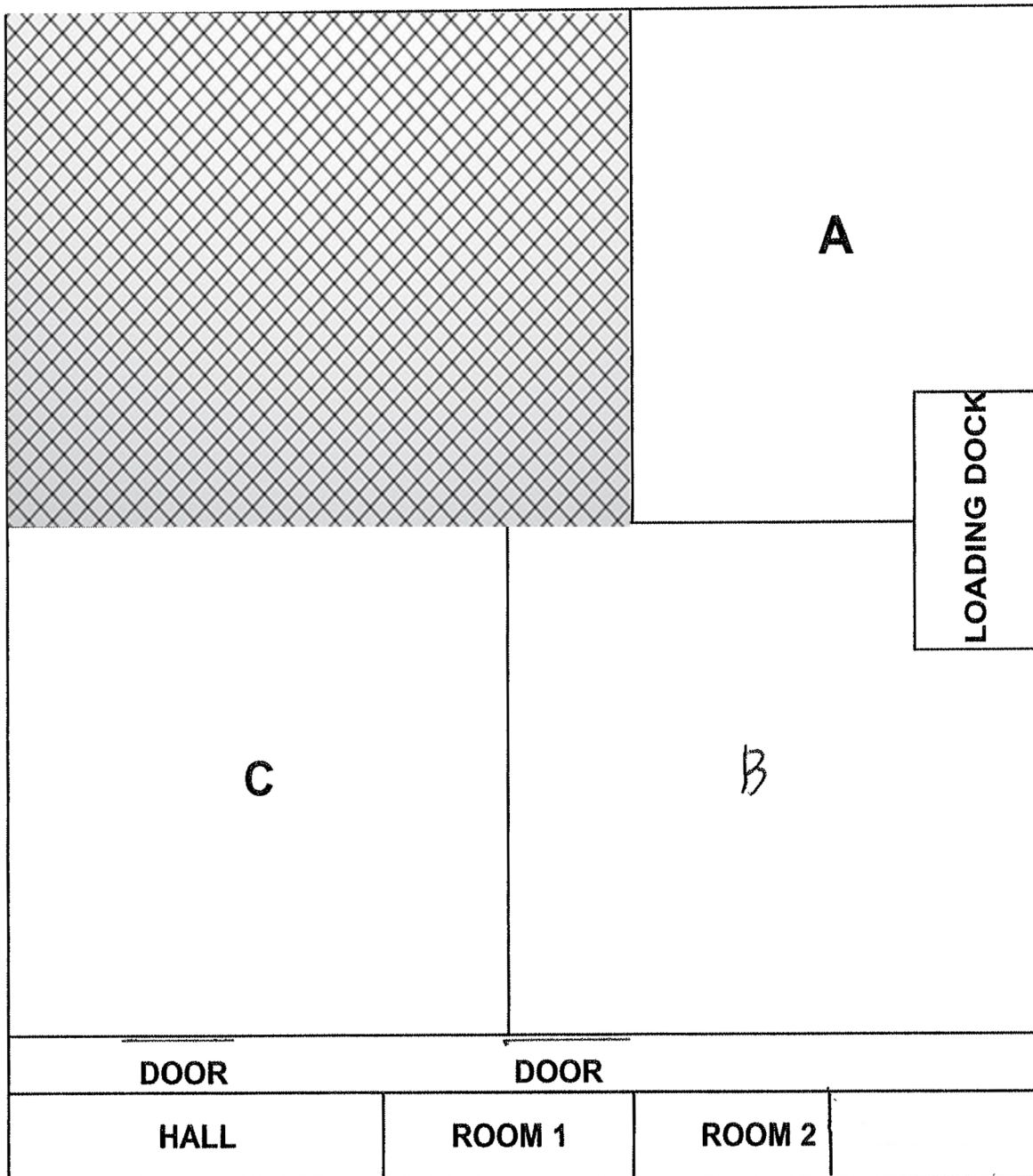


# FLOOR PLAN (Warehouse + Office)



**\* Rooms are 500 Sq Ft each**  
**A 3000 Sq ft, B and C is 5500 Sq ft**

- 1. A + Room 1 or 2 : 3500 Sf Ft**
- 2. B or C + Room 1 or d : 6000 Sq Ft**
- 3. B + C+ Room 1&2 : 12,000 Sq Ft**