



ASQ CENTER

600 N PLANKINTON AVENUE | MILWAUKEE, WI 53202

AVAILABLE SPACE

*Contiguous

1st Floor: 10,114 RSF
5th Floor: 24,767 RSF*
6th Floor: 24,767 RSF*

Max Contiguous

49,534 RSF

Gross Building Area

240,000 SF

Lease Rate

\$14.00 - \$16.00/SF Net

Est. OPEX (2024)

\$10.00/SF

ASQ Center is a 240,00 square foot office building in the heart of downtown Milwaukee. The Class A mixed-use property boasts an incredible amenities package, frontage along the Milwaukee River, skywalk connections to buildings throughout the city, extensive parking availabilities both within the building and nearby, and exceptional finish selections and ceiling heights.

PROPERTY HIGHLIGHTS

- On-site parking options include limited reserved and unreserved underground parking with additional parking in The Avenue structure
- Shared building amenities with The Avenue include - 3rd Street Market Hall, fitness center, large training room, onsite Airbnb units, and direct access to the Milwaukee Skywalk system
- Walking distance to Deer District and Fiserv Forum
- Plug-n-play available with brand new furniture on 5th & 6th floor

CONTACT US

Ned Purtell, CCIM, SIOR
414.249.2330
npurtell@founders3.com

John Davis
414.249.2303
jdavis@founders3.com

ASQ CENTER

600 N PLANKINTON AVENUE | MILWAUKEE, WI 53202

BUILDING AMENITIES

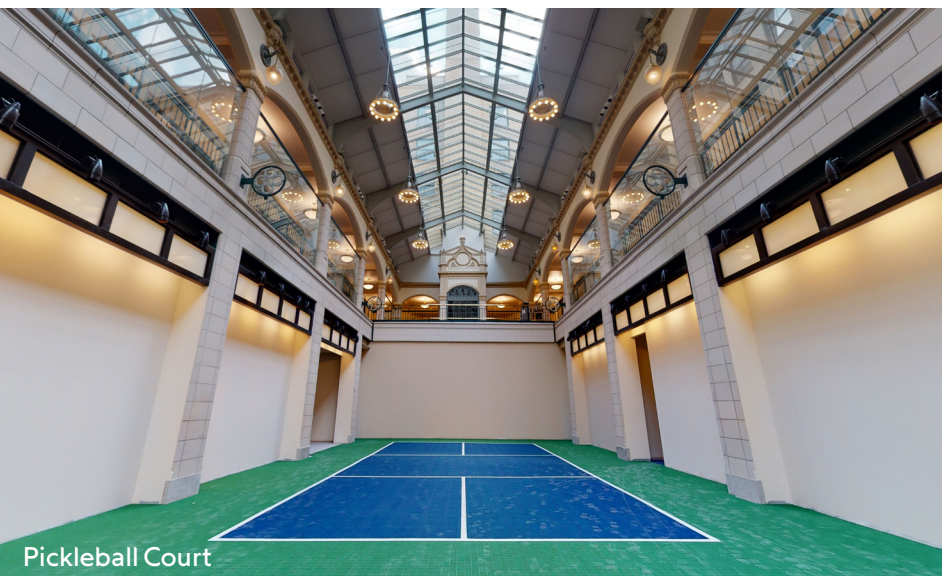
Shared with The Avenue



3rd Street Market Hall



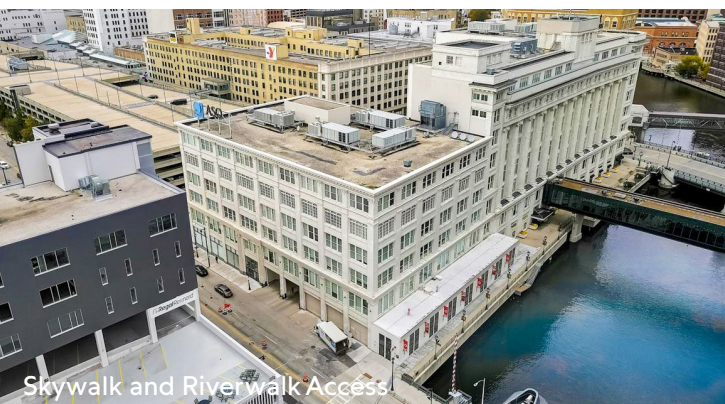
Conference Room



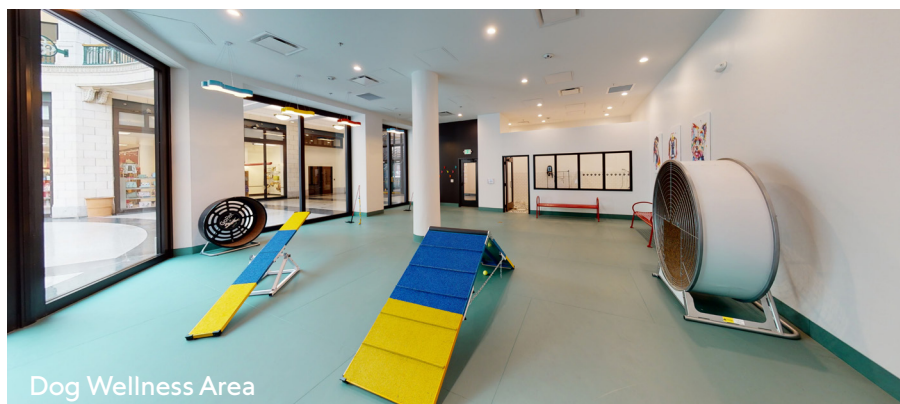
Pickleball Court



Fitness Center



Skywalk and Riverwalk Access



Dog Wellness Area

ASQ CENTER

600 N PLANKINTON AVENUE | MILWAUKEE, WI 53202

PROPERTY PHOTOS



Building Lobby



6th Floor Kitchenette



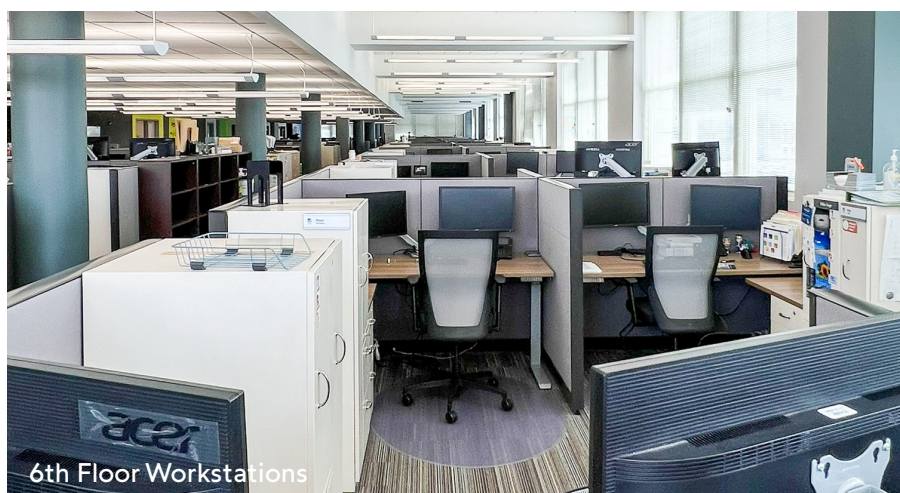
6th Floor Kitchenette/Collaboration Area



6th Floor Collaboration Area



6th Floor Collaboration Area



6th Floor Workstations

ASQ CENTER

600 N PLANKINTON AVENUE | MILWAUKEE, WI 53202

1st FLOOR PLAN

AVAILABLE SPACE: 10,114 RSF

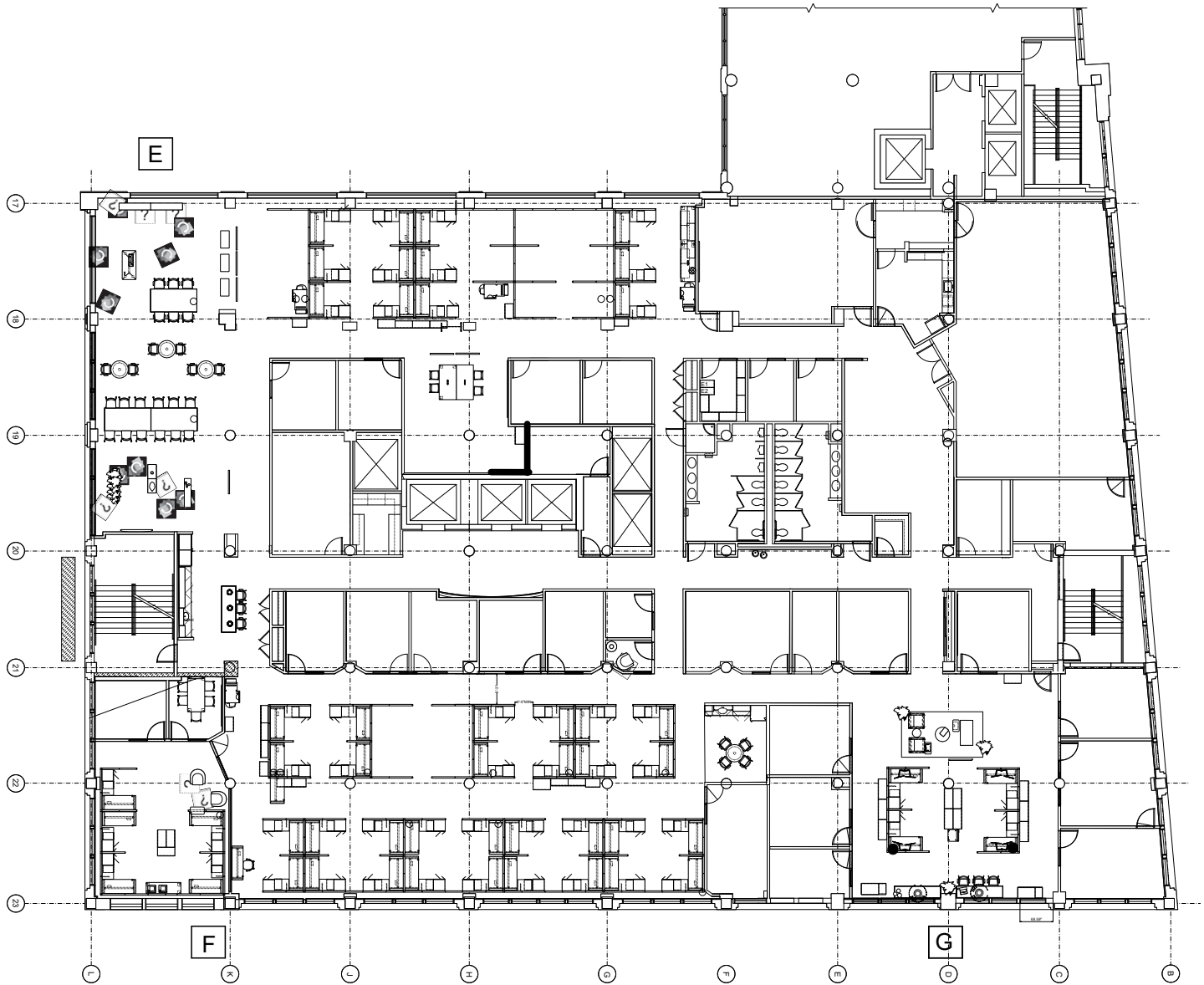


ASQ CENTER

600 N PLANKINTON AVENUE | MILWAUKEE, WI 53202

5th FLOOR PLAN

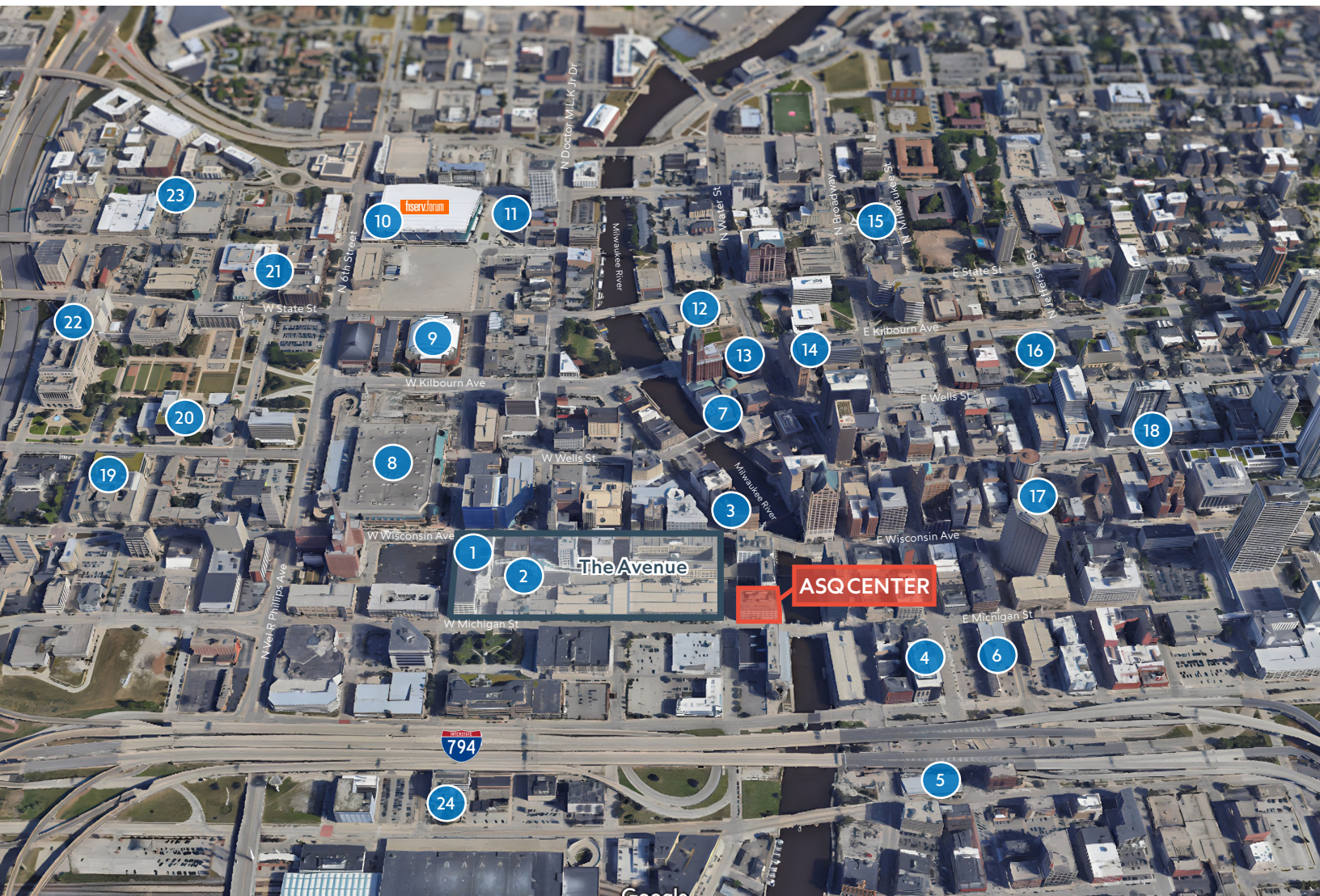
AVAILABLE SPACE: 24,767 RSF



ASQ CENTER

600 N PLANKINTON AVENUE | MILWAUKEE, WI 53202

NEIGHBORHOOD MAP



- | | | |
|--------------------------------|-------------------------------------|--------------------------------------|
| 1. Kohl's | 9. Milwaukee Panthers Arena | 17. Pfister Hotel |
| 2. 3rd Street Market Hall | 10. Fiserv Forum | 18. Lupi and Iris |
| 3. Riverside Theater | 11. Deer District | 19. Milwaukee Public Library |
| 4. Tupelo Honey | 12. Marcus Performing Arts Center | 20. Milwaukee Public Museum |
| 5. Milwaukee Public Market | 13. Saint Kate Hotel | 21. Milwaukee Court House |
| 6. Central Standard | 14. Milwaukee City Hall | 22. Milwaukee Area Technical College |
| 7. Milwaukee Repertory Theater | 15. Milwaukee School of Engineering | 23. Pabst Park |
| 8. Baird Center | 16. Cathedral Square | 24. Stone Creek Coffee |

STATE OF WISCONSIN BROKER DISCLOSURE

Wisconsin law requires all real estate licensees to give the following information about brokerage services to prospective customers.

Prior to negotiating on your behalf the Brokerage firm, or an agent associated with the firm, must provide you the following disclosure statement.

Disclosure to Customers

You are a customer of the brokerage firm (hereinafter Firm). The Firm is either an agent of another party in the transaction or a subagent of another firm that is the agent of another party in the transaction. A broker or a salesperson acting on behalf of the Firm may provide brokerage services to you. Whenever the Firm is providing brokerage services to you, the Firm and its brokers and salespersons (hereinafter Agents) owe you, the customer, the following duties:

- The duty to provide brokerage services to you fairly and honestly.
- The duty to exercise reasonable skill and care in providing brokerage services to you.
- The duty to provide you with accurate information about market conditions within a reasonable time if you request it, unless disclosure of the information is prohibited by law.
- The duty to disclose to you in writing certain Material Adverse Facts about a property, unless disclosure of the information is prohibited by law.
- The duty to protect your confidentiality. Unless the law requires it, the Firm and its Agents will not disclose your confidential information or the confidential information of other parties.
- The duty to safeguard trust funds and other property held by the Firm or its Agents.
- The duty, when negotiating, to present contract proposals in an objective and unbiased manner and disclose the advantages and disadvantages of the proposals.

Please review this information carefully. An Agent of the Firm can answer your questions about brokerage services, but if you need legal advice, tax advice, or a professional home inspection, contact an attorney, tax advisor, or home inspector. This disclosure is required by section 452.135 of the Wisconsin statutes and is for information only. It is a plain-language summary of the duties owed to a customer under section 452.133(1) of the Wisconsin statutes.

Confidentiality Notice to Customers

The Firm and its Agents will keep confidential any information given to the Firm or its Agents in confidence, or any information obtained by the Firm and its Agents that a reasonable person would want to be kept confidential, unless the information must be disclosed by law or you authorize the Firm to disclose particular information. The Firm and its Agents shall continue to keep the information confidential after the Firm is no longer providing brokerage services to you.

No representation is made as to the legal validity of any provision or the adequacy of any provision in any specific transaction.

The following information is required to be disclosed by law:

1. Material Adverse Facts, as defined in section 452.01(5g) of the Wisconsin Statutes (see "Definition of Adverse Facts" below).
2. Any facts known by the Firm or its Agents that contradict any information included in a written inspection report on the property or real estate is the subject of the transaction.

To ensure that the Firm and its Agents are aware of what specific information you consider confidential, you may list that information below or provide that information to the Firm or its Agents by other means. At a later time, you may also provide the Firm or its Agents with other information you consider to be confidential.

CONFIDENTIAL INFORMATION

NON-CONFIDENTIAL INFORMATION

(the following information may be disclosed to the Firm and its Agents)

(Insert information you authorize to be disclosed, such as financial qualification information.)

Definition of Material Adverse Facts

A "Material Adverse Fact" is defined in Wis. Stat. 452.01(5g) as an Adverse Fact that a party indicates is of such significance, or that is generally recognized by a competent licensee as being of such significance to a reasonable party, that it affects or would affect the party's decision to enter into a contract or agreement concerning a transaction or affects or would affect the party's decision about the terms of such a contract or agreement.

An "Adverse Fact" is defined in Wis. Stat. 452.01(1e) as a condition or occurrence that a competent licensee generally recognizes will significantly and adversely affect the value of the property, significantly reduce the structural integrity of improvements to real estate, or present a significant health risk to occupants of the property; or information that indicates that a party to a transaction is not able to or does not intend to meet his or her obligations under a contract or agreement made concerning the transaction.

Notice About Sex Offender Registry

You may obtain information about the sex offender registry and persons registered with the registry by contacting the Wisconsin Department of Corrections on the Internet at <http://www.doc.wi.gov> or by telephone at 608-240-5830.