

FOR SALE

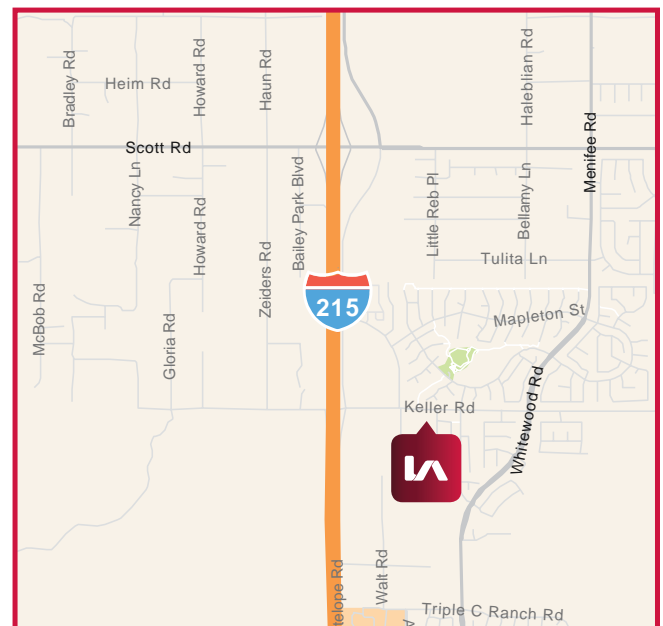
±6.31 ACRES COMMERCIAL LAND
28315 KELLER ROAD | MURRIETA, CA



PROPERTY HIGHLIGHTS:

- ±6.31 Acres Available for Purchase
- APN: 384-220-011
- Across the street from the New Kaiser Hospital
- Future Off-ramp at Keller Road
- Utilities in Keller Road (Buyer to Validate)
- Zoning: ORP - Office Research Park ([click here to learn more](#))
- New Mapleton Road planned at Signalized Intersection

SALES PRICE:
\$2,200,000.00



Gordon Mize

951.445.4504
gmize@leetemecula.com
DRE #01275376

Michael W. Strode, MBA, CCIM, SIOR

951.445.4508
mstrode@leetemecula.com
DRE #00798900

No warranty or representation has been made to the accuracy of the foregoing information. Terms of sale or lease and availability are subject to change or withdrawal without notice. Lee & Associates Commercial Real Estate Services, Inc. - Riverside. 25240 Hancock Avenue, Suite 100 - Murrieta, CA 92562 Corporate ID# 01048055

FOR SALE

±6.31 ACRES COMMERCIAL LAND
28315 KELLER ROAD | MURRIETA, CA

MAP PREPARED FOR ASSESSMENT PURPOSES ONLY. NO LIABILITY FOR THE ACCURACY OF THE DATA SHOWN. ASSESSOR'S PARCEL MAPS MAY VARY FROM LOCAL LOT-SPLIT OR BUILDING SITE ORDINANCES.

POR. NW 26 T. 6S., R. 3W
CITY OF MURRIETA



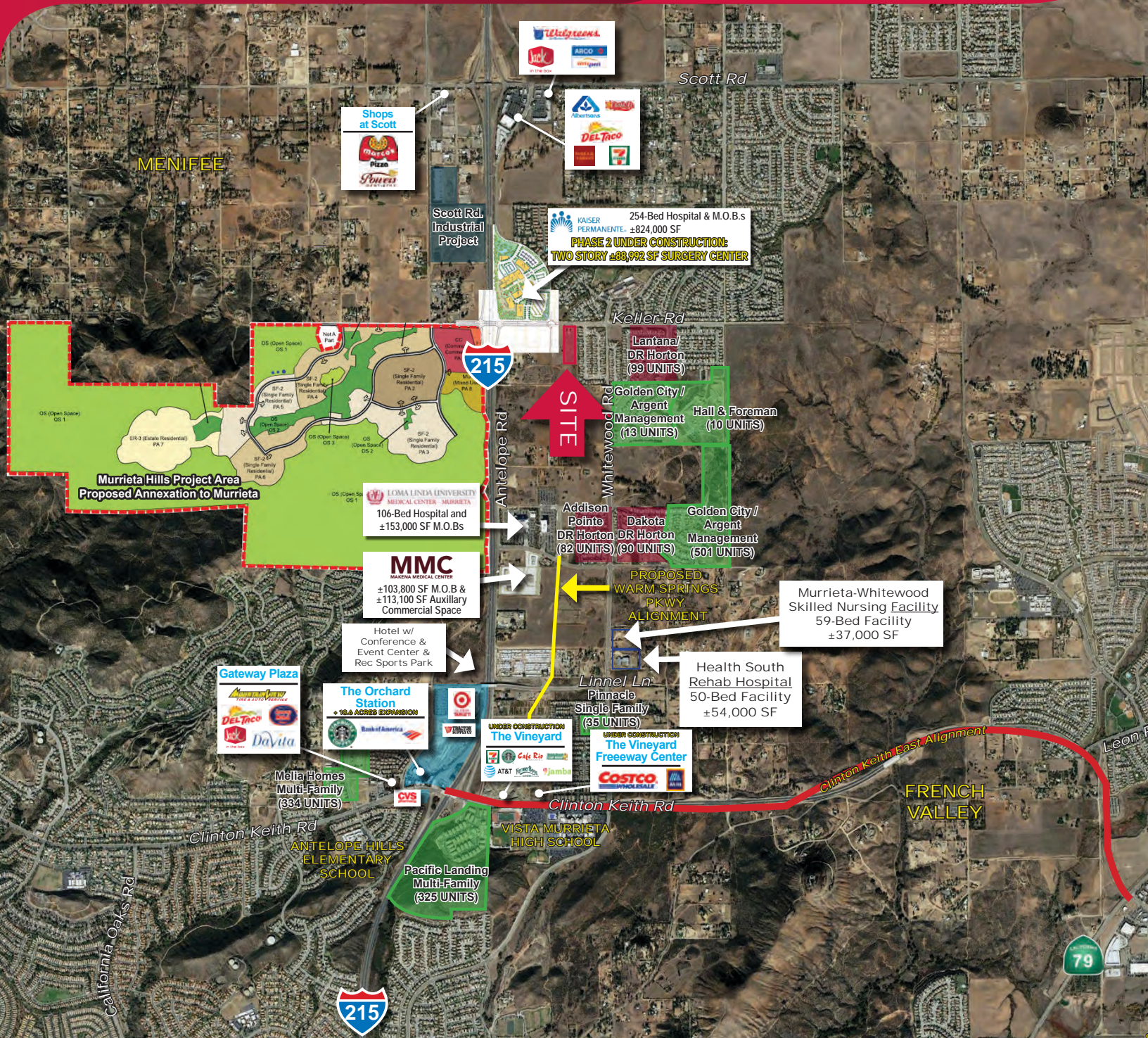
Gordon Mize
951.445.4504
gmize@leetemecula.com
DRE #01275376

Michael W. Strode, MBA, CCIM, SIOR
951.445.4508
mstrode@leetemecula.com
DRE #00798900

No warranty or representation has been made to the accuracy of the foregoing information. Terms of sale or lease and availability are subject to change or withdrawal without notice. Lee & Associates Commercial Real Estate Services, Inc. - Riverside. 25240 Hancock Avenue, Suite 100 - Murrieta, CA 92562 Corporate ID# 01048055

FOR SALE

±6.31 ACRES COMMERCIAL LAND
28315 KELLER ROAD | MURRIETA, CA



Gordon Mize
951.445.4504
gmize@leetemecula.com
DRE #01275376

Michael W. Strode, MBA, CCIM, SIOR
951.445.4508
mstrode@leetemecula.com
DRE #00798900

No warranty or representation has been made to the accuracy of the foregoing information. Terms of sale or lease and availability are subject to change or withdrawal without notice. Lee & Associates Commercial Real Estate Services, Inc. - Riverside. 25240 Hancock Avenue, Suite 100 - Murrieta, CA 92562 Corporate ID# 01048055