

FOR LEASE

# CORNERSTONE CENTER

3929 BRIDGEPORT WAY WEST  
UNIVERSITY PLACE, WA 98466

KIDDER.COM

km Kidder  
Mathews



# CORNERSTONE CENTER



*Cornerstone Center is adjacent to new Applebee's Restaurant & the Whole Foods anchored Village at Chambers Bay and located in a densely populated captive market demographic. The center is directly across the street from high volume Safeway and the only Trader Joe's in Pierce County.*

\$24.00 Base Rent

Available: June 1, 2026

Located in the University Place Retail Core

Across the street from high volume Safeway

**SUITE 208**

AVAILABLE

**2,044 SF**

RETAIL SPACE

# DEMOGRAPHICS

## POPULATION

	1 Mile	3 Miles	5 Miles
2010 CENSUS	14,444	86,562	228,314
2020 CENSUS	16,334	95,906	251,872
2024 ESTIMATE	16,106	95,354	254,095
2029 PROJECTED	16,370	94,781	255,948

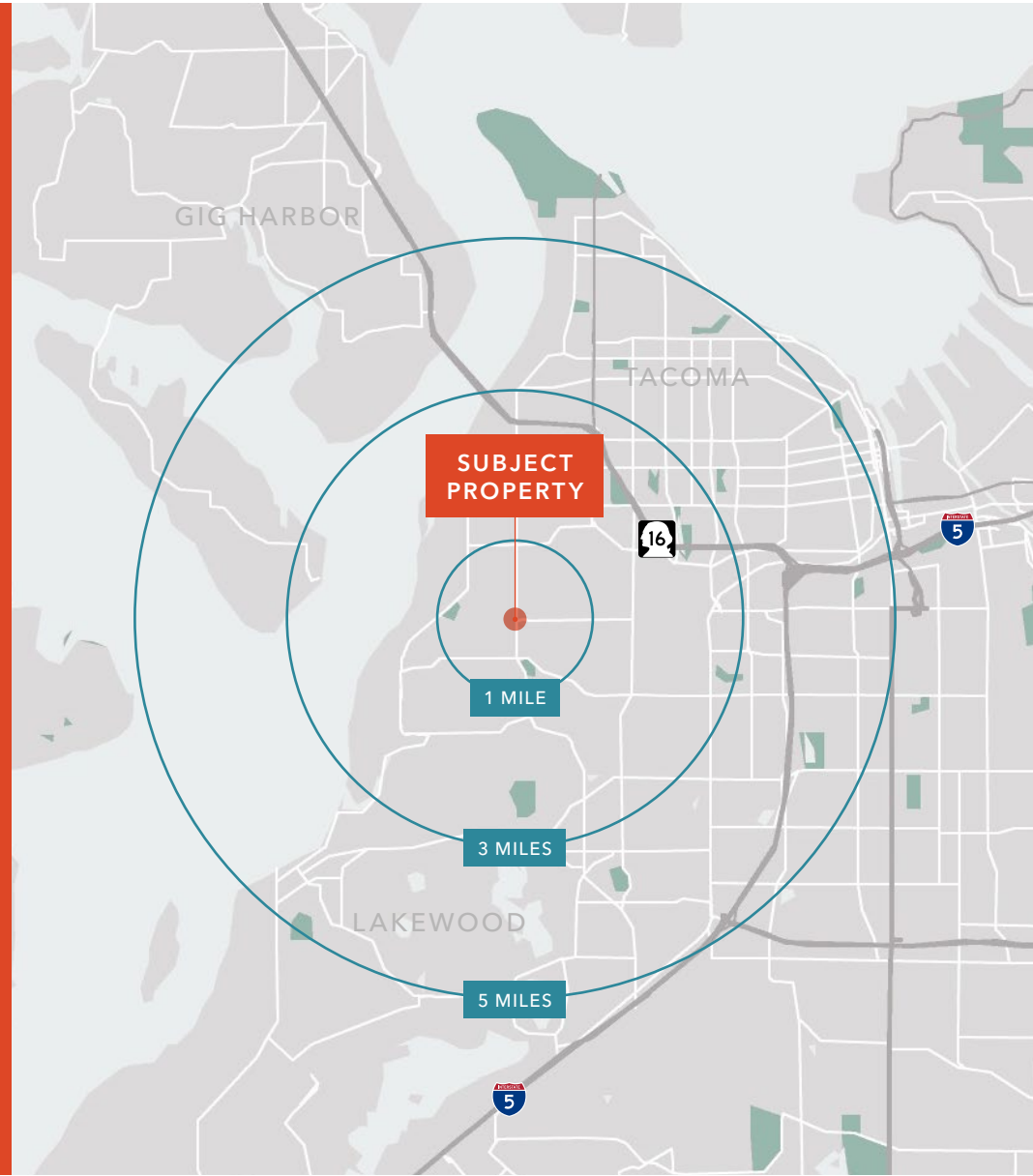
## MEDIAN AGE & GENDER

	1 Mile	3 Miles	5 Miles
MEDIAN AGE	39.4	38.0	37.6
% FEMALE	52.7%	51.3%	50.0%
% MALE	47.3%	48.7%	50.0%

## HOUSEHOLDS

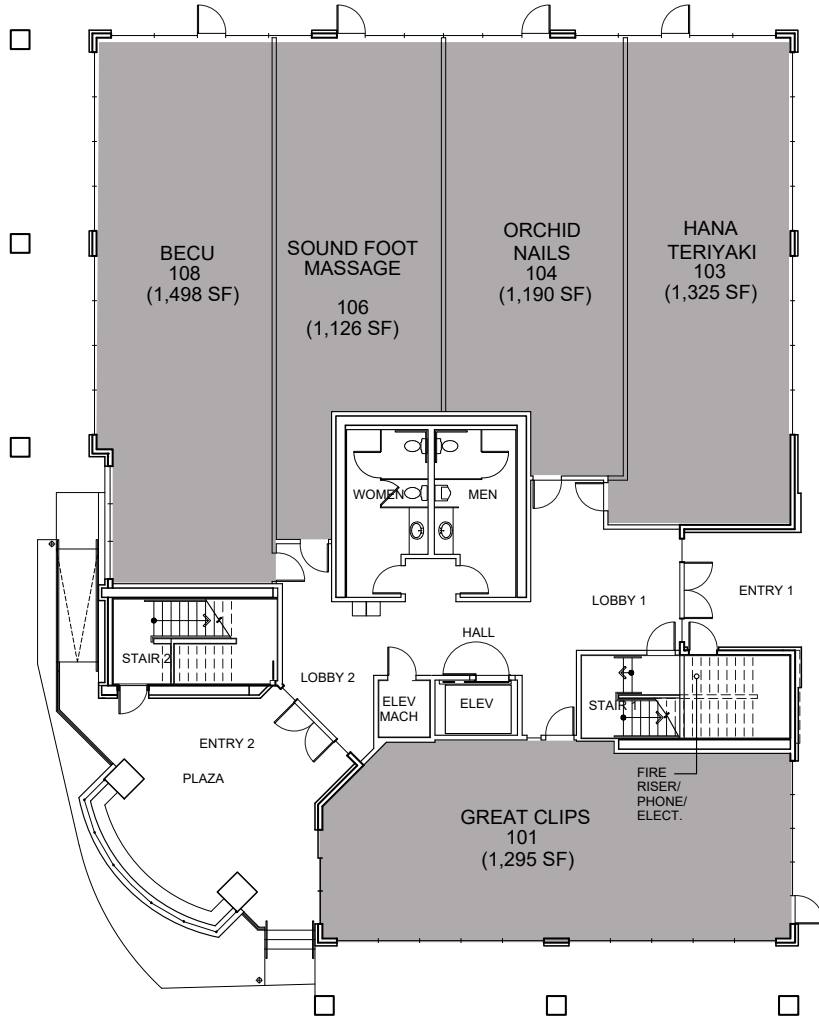
	1 Mile	3 Miles	5 Miles
2024 HOUSEHOLDS	6,768	40,927	105,894
2029 PROJECTED HOUSEHOLDS	6,906	40,811	107,231
2024 AVERAGE	\$134,267	\$117,484	\$118,144
2029 AVERAGE PROJECTED	\$141,093	\$123,107	\$122,962

Data Source: ©2024, Sites USA

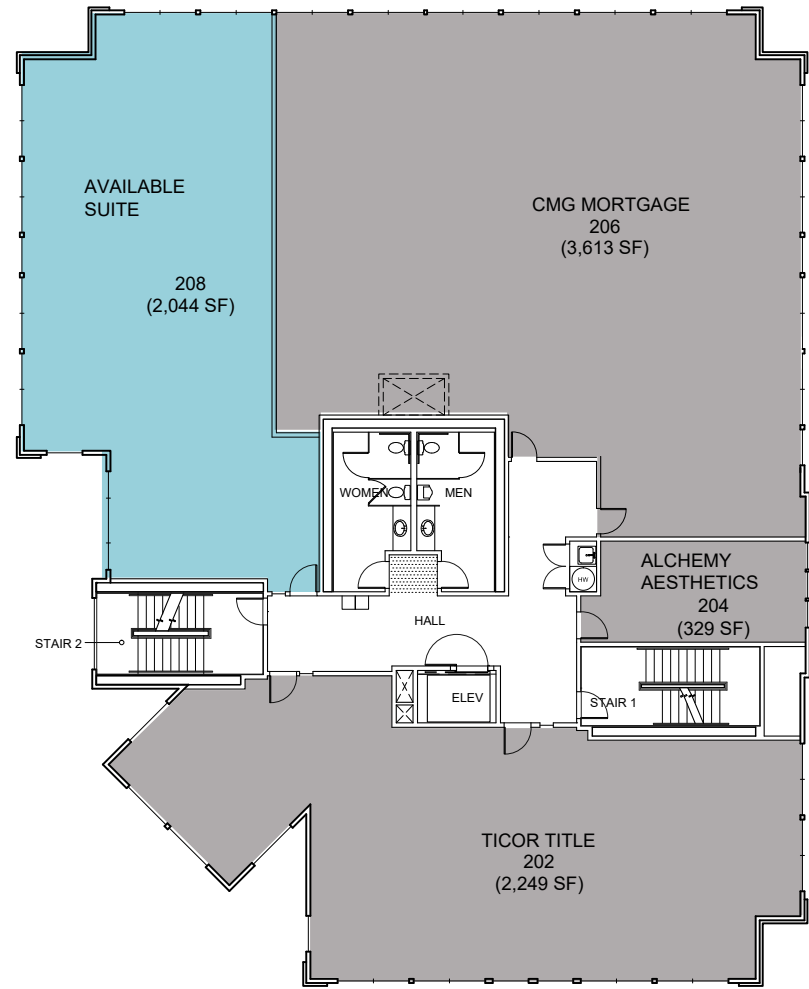


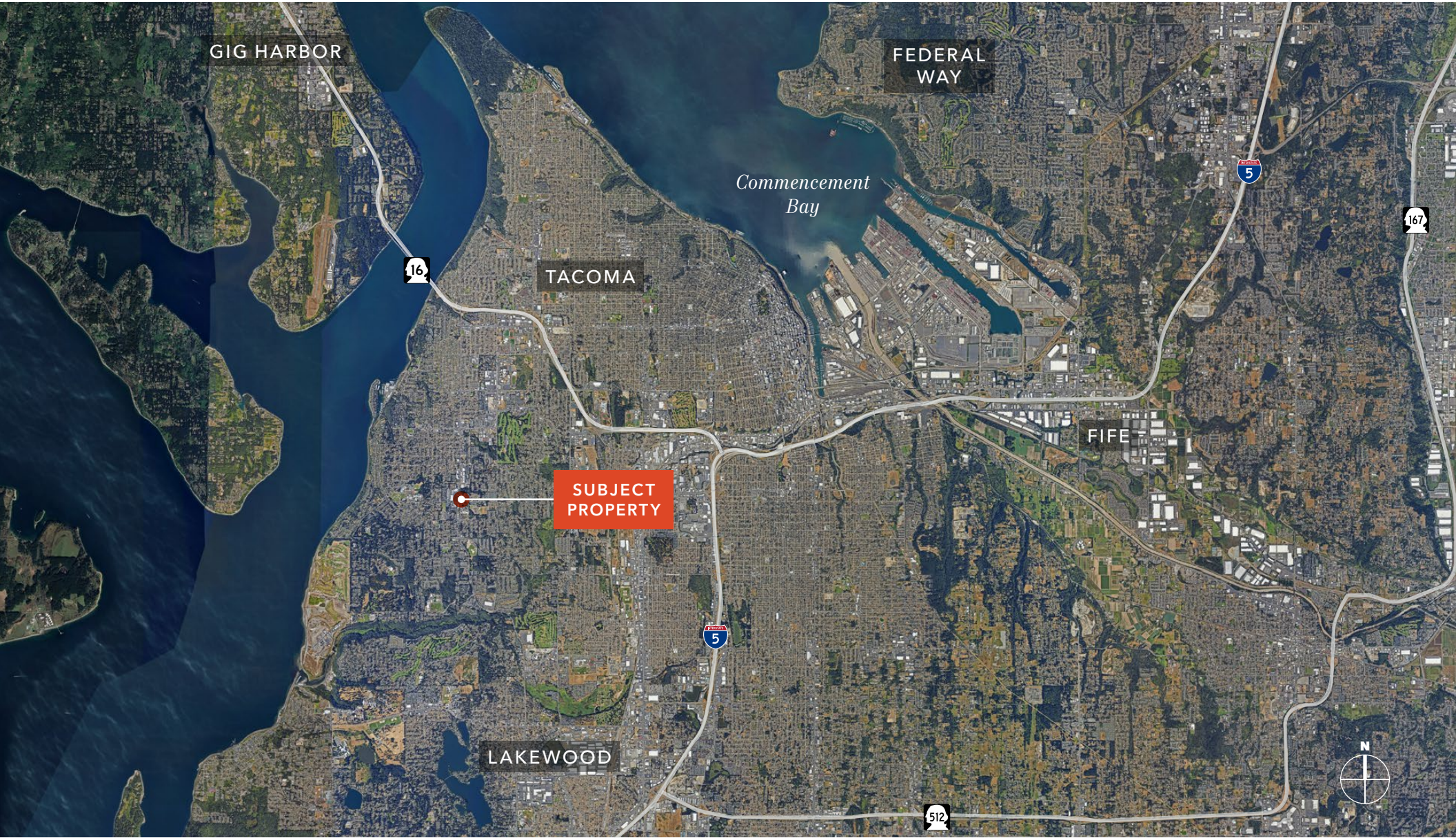
# FLOOR PLAN

## FIRST FLOOR



## SECOND FLOOR





**UNIVERSITY PLACE, WA** is located in the beautiful South Puget Sound area and is home to more than 31,500 active residents. The scenic views of the surrounding mountain ranges and access to the shores of the Puget Sound from the popular Chambers Bay Golf Course (home of the 2015 US Open), make University Place one of Pierce County's ultimate destinations for recreation and relaxation.



*Exclusively listed by*

**DON WHITTLES**

Senior Vice President

253.208.2257

don.whittles@kidder.com

**BLAKE WEBER**

Senior Vice President

206.898.1231

blake.weber@kidder.com

**TIM WEBER**

Executive Vice President

206.650.0391

tim.weber@kidder.com

**KIDDER.COM**