



15040 CONFERENCE CENTER DR, CHANTILLY, VA 20151

AVAILABLE FOR SUBLEASE



PROPERTY INFORMATION

Property Name / Address:	15040 Conference Center Dr	Total Available Secure Area Office Sq. Ft.:	approx. 8,337
City / State / ZIP:	Chantilly, VA 20151	Total Available Secure Area Data Center Sq. Ft.:	approx. 5,613
Property Type:	Office, Secured Space, data center	Total Warehouse Sq. Ft.:	1445 – Half of warehouse space
Total Available Secure Area Sq. Ft.:	approx. 15,752	Suite / Unit #:	C100



SPACE & AMENITIES

Parking spaces:	Shared	Warehouse Space (sq. ft.):	2926
Other Amenities:	Access to gym and locker room in adjacent building	Number of Loading Docks:	1
Number of Offices:	19	Number of Drive-In Doors:	1
Number of Conference Rooms:	2 large conference rooms and 2 small conference rooms	Size of loading dock opening:	14' H x 26' W
Number of Bathrooms:	1 Men's and 1 Women's	Storage Areas:	1,445 sq ft of the warehouse
Breakroom / Kitchen:	2 kitchen/breakrooms		



1,445 SF
WAREHOUSE STORAGE



15,572 SF
TOTAL AVAILABLE SPACE



19 MIN
DRIVE TO WASHINGTON
DULLES INTERNATIONAL

CONTACT INFORMATION:

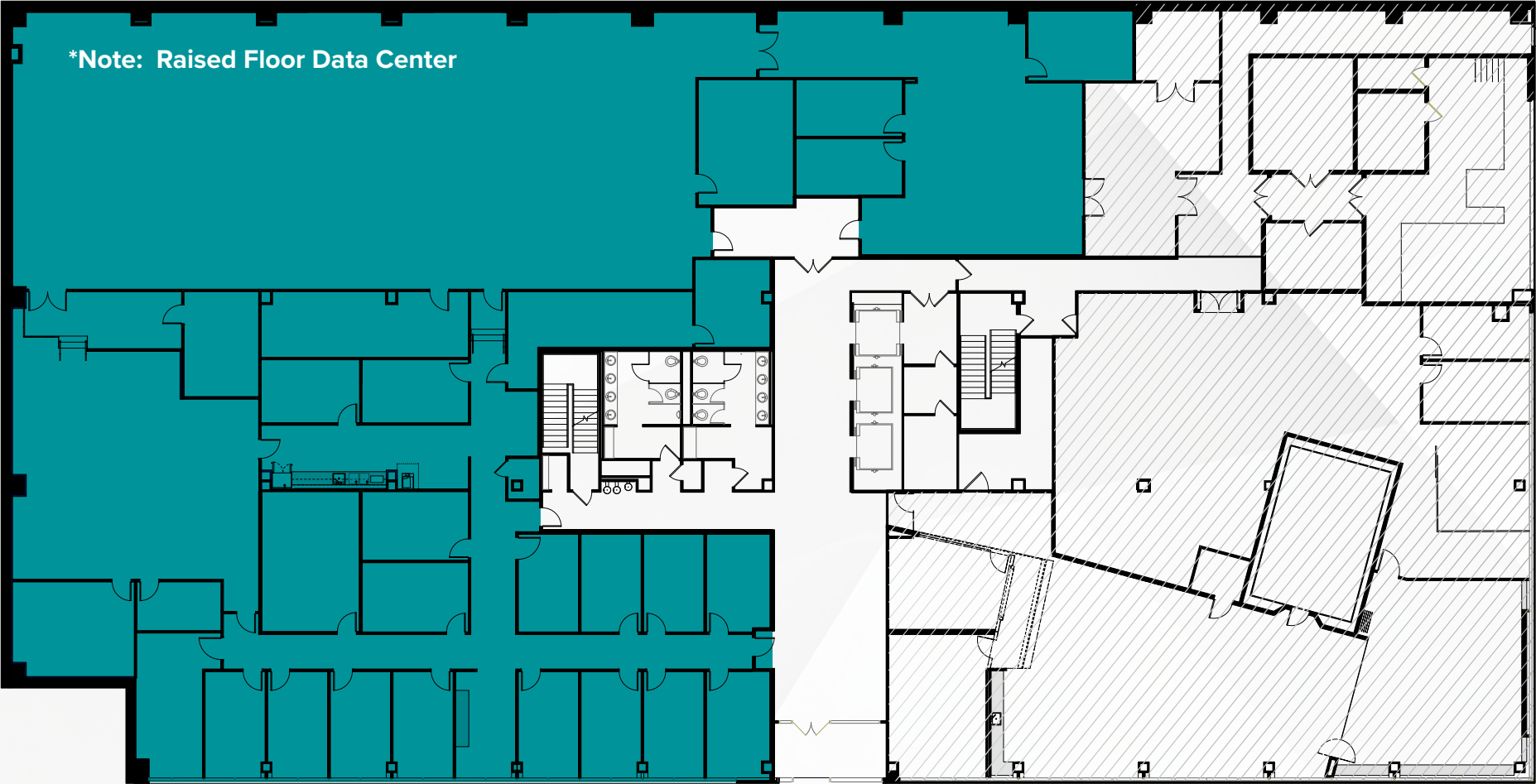
Junius Tillery Executive Managing Director t 703-918-0238 junius.tillery@nmrk.com	Chethan Rao Executive Director t 202-421-5969 chethan.rao@cushwake.com
--	---

NEWMARK



FLOOR PLAN

 = Secure Area



COMPLIANCE & SECURITY FEATURES

Expiration Date:	Expires when location is decommissioned or program ends	Standards Compliant:	NISPOM
------------------	---	----------------------	--------



ABOUT NEWMARK

WE TRANSFORM UNTAPPED POTENTIAL INTO LIMITLESS OPPORTUNITY.

At Newmark, we don’t just adapt to what our partners need—we adapt to what the future demands. Since 1929, we’ve faced forward, predicting change and pioneering ideas. Almost a century later, the same strategic sense and audacious thinking still guide our approach. Today our integrated platform delivers seamlessly connected services tailored to every type of client, from owners to occupiers, investors to founders, and growing startups to leading companies.

Tapping into smart tech and smarter people, Newmark brings ingenuity to every exchange and transparency to every relationship. We think outside of boxes, buildings and business lines, delivering a global perspective and a nimble approach. From reimagining spaces to engineering solutions, we have the vision to see what’s next and the tenacity to get there first.

CONTACT INFORMATION:

Junius Tillery Executive Managing Director t 703-918-0238 junius.tillery@nmrk.com	Chethan Rao Executive Director t 202-421-5969 chethan.rao@cushwake.com
---	--

NEWMARK