



TISCH TOWER TRANSFORMED!

Adjacent to Santana Row Amenities!



NEWMARK

the **Muller**
company

Patty
STEELE

Senior Managing Director • 408.982.8463
patty.steele@nrmk.com • CA RE License #00839635

Grant
MEYLAN

Managing Director • 408.987.4153
grant.meylan@nrmk.com • CA RE License #02078953

Andrea
BARTLINSKI

Brokerage Services Specialist • 408.982.8424
andrea.bartlinski@nrmk.com • CA RE License #01338254

BUILDING HIGHLIGHTS

TISCH TOWER

- Premier West Valley office building adjacent to Santana Row
- 12-story high rise with stunning panoramic views
- Amenity-rich environment with newly upgraded lobby, outdoor plaza seating areas and new fitness & conference center (now open)!
- Easy access to Interstate 280 & Highway 17
- Covered and surface parking – 3.6/1000
- Responsive on-site management and 24/7 security
- Within 5 minutes of the San Jose International Airport
- Energy Star Rating score 98%
- 6 EV Charging Stations
- Monument signage available





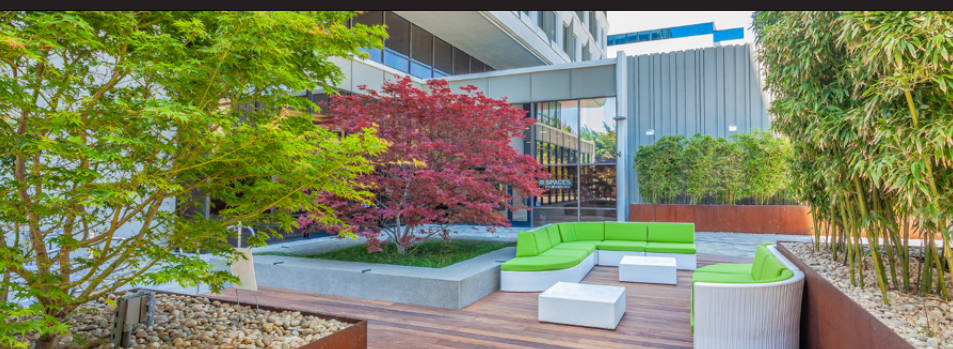
AVAILABLE TOWER SUITES

Suite 30	±1,258 rsf	Available Now
Suite 70	±1,511 rsf	Available Now
*Suite 100	±1,454 rsf	Available 4/1/26
*Suite 150	±2,518 rsf	Available Now
Suite 806	±1,064 rsf	Available Now

*Can combine for ±3,972 rsf

PLAZA SOUTH

*First Floor	±10,159 rsf	Shell condition – TIs to suit!
--------------	-------------	--------------------------------

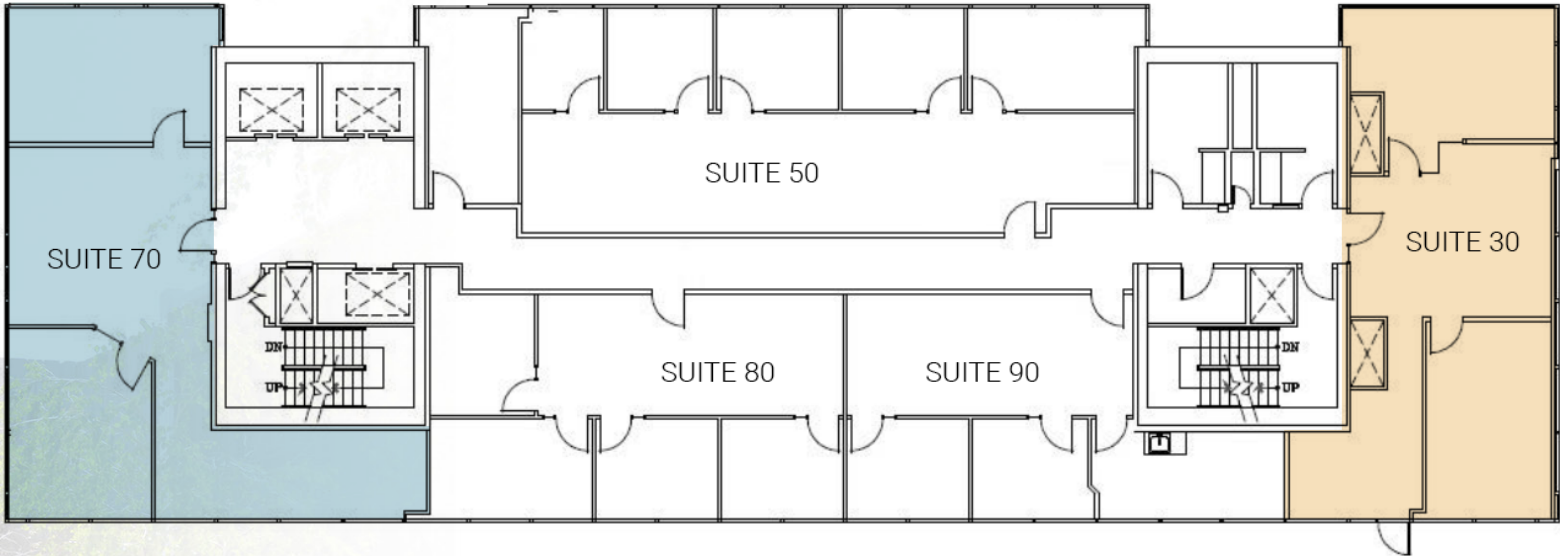






FLOORPLAN
SUITE 70
±1,511 RSF

FLOORPLAN
SUITE 30
±1,258 RSF

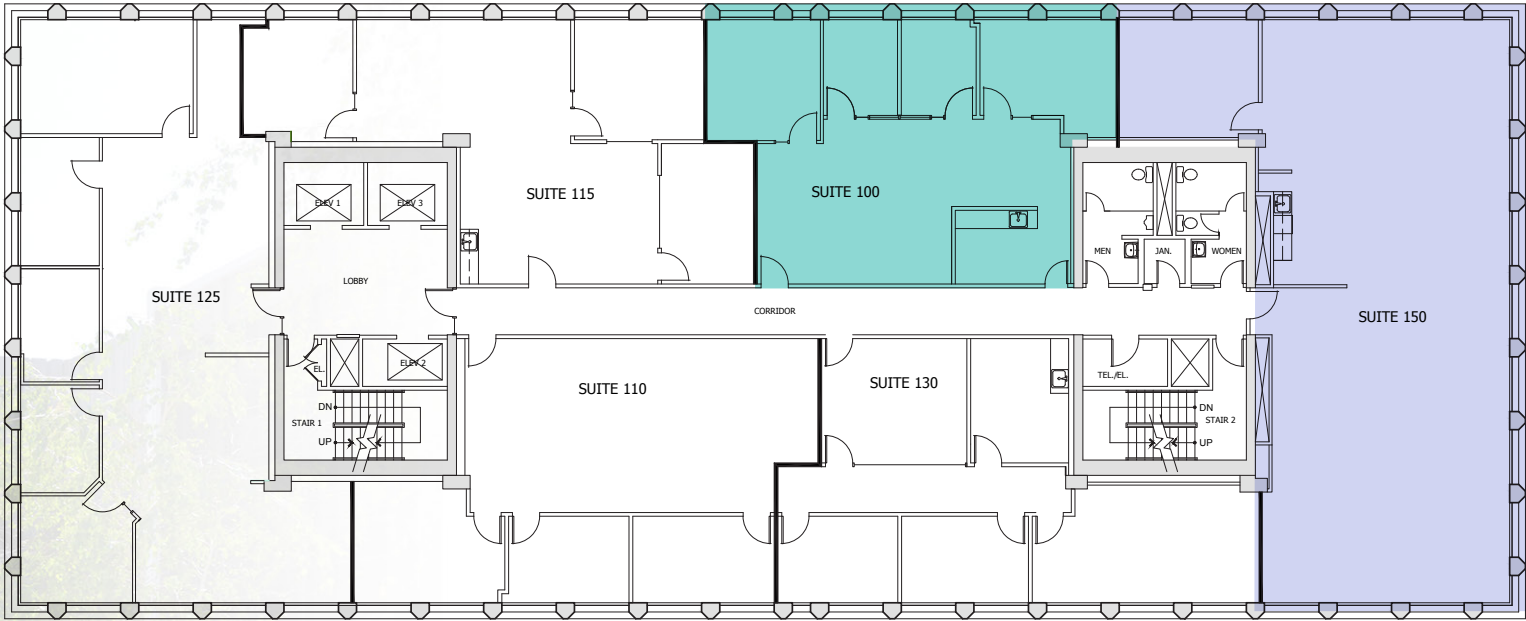


Available Now
Available Now

FLOORPLAN
SUITE 100
±1,454 RSF

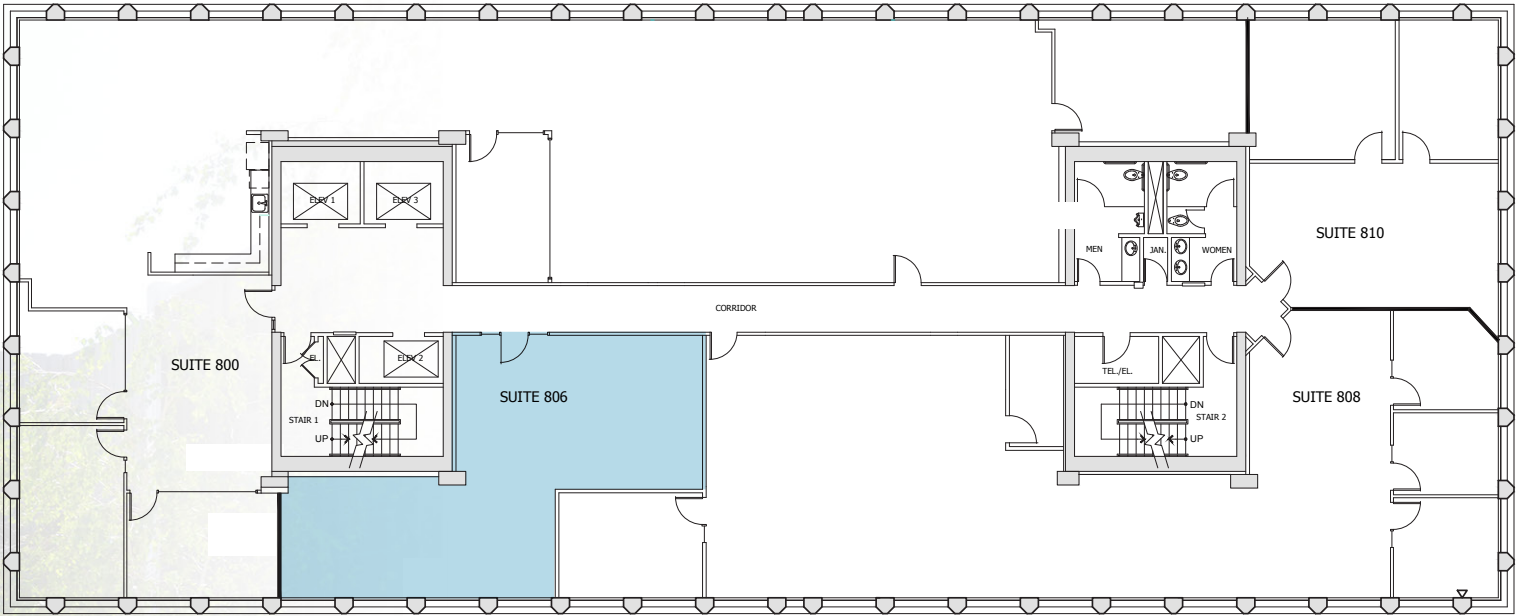
FLOORPLAN
SUITE 150
±2,518 RSF

Can combine for ±3,972 rsf



Available 4/1/26
Available Now

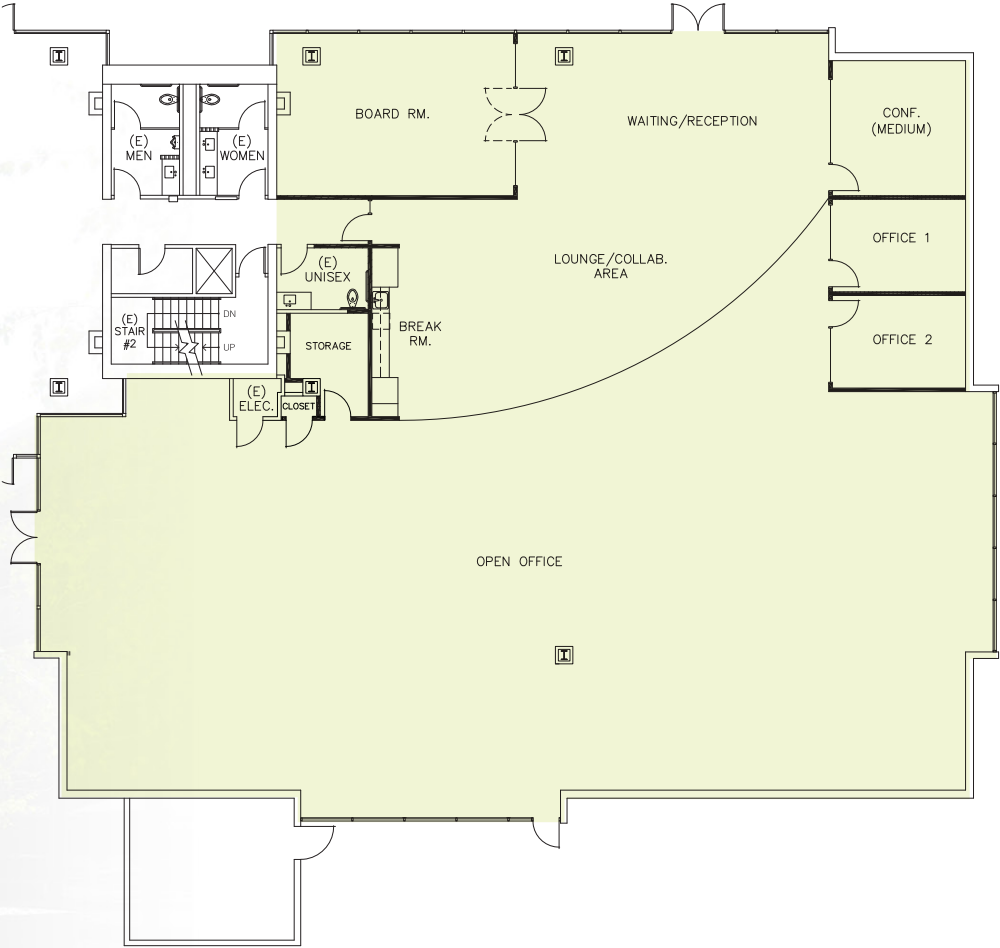
FLOORPLAN
SUITE 806
±1,064 RSF



Available Now

FLOORPLAN
PLAZA SOUTH FIRST FLOOR

±10,159 RSF



Proposal Hypothetical Market Ready Floorplan
Tenant Improvements to Suit!

Available Now



Patty STEELE | Senior Managing Director • 408.982.8463
patty.steele@nmrk.com • CA RE License #00839635

Grant MEYLAN | Managing Director • 408.987.4153
grant.meylan@nmrk.com • CA RE License #02078953

Andrea BARTLINSKI | Brokerage Services Specialist • 408.982.8424
andrea.bartlinski@nmrk.com • CA RE License #01338254

3055 Olin Avenue, Suite 2200, San Jose, CA 95128 | The distributor of this communication is performing acts for which a real estate license is required. The information contained herein has been obtained from sources deemed reliable but has not been verified and no guarantee, warranty or representation, either express or implied, is made with respect to such information. Terms of sale or lease and availability are subject to change or withdrawal without notice. 8249694750 • 11/25



NEWMARK the **Muller** company

