

# Only $\pm 1,800$ SF Remaining

The Ridge at Talcott Mountain | 200 Hopmeadow Street | Simsbury, CT



## First-Class Retail/Office Space in New Mixed-Use Development

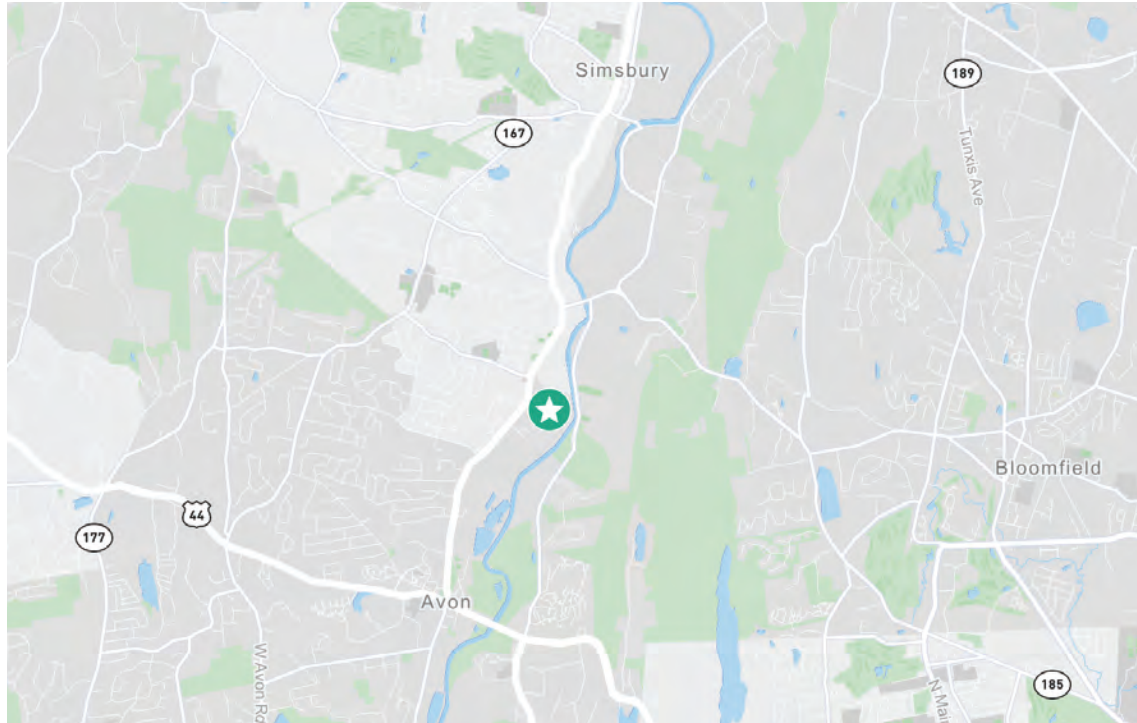
CBRE is pleased to offer for lease the only remaining retail/office space at The Ridge at Talcott Mountain. The Ridge is a new mixed-use development located on Hopmeadow Street in Simsbury that includes 280 luxury apartment units and townhomes, in addition to approximately 21,000 SF of retail and commercial office space, and a 120-bed assisted living facility. Situated at the base of Talcott Mountain, this location benefits from excellent demographics and a picturesque suburban setting alongside the Farmington River. Available space consists of approximately 1,800 SF in Building A. Join new tenants including The Goddard School and Performance Labs at this high-quality, high-profile location on Route 44/202.



## ±3,600 SF Retail/Office Space Available

The Ridge at Talcott Mountain | 200 Hopmeadow St. | Simsbury, CT

For Lease



## 2022 Regional Demographics

	1 Mile	3 Miles	5 Miles
Population	2,322	20,463	60,421
Estimated Pop. Growth (2022-2027)	1.70%	0.40%	0.17%
No. of Households	1,009	8,704	24,397
Average Household Income	\$179,190	\$177,364	\$175,195
Median Age	46	49	49

## ±1,800 SF Retail/Office Space Available

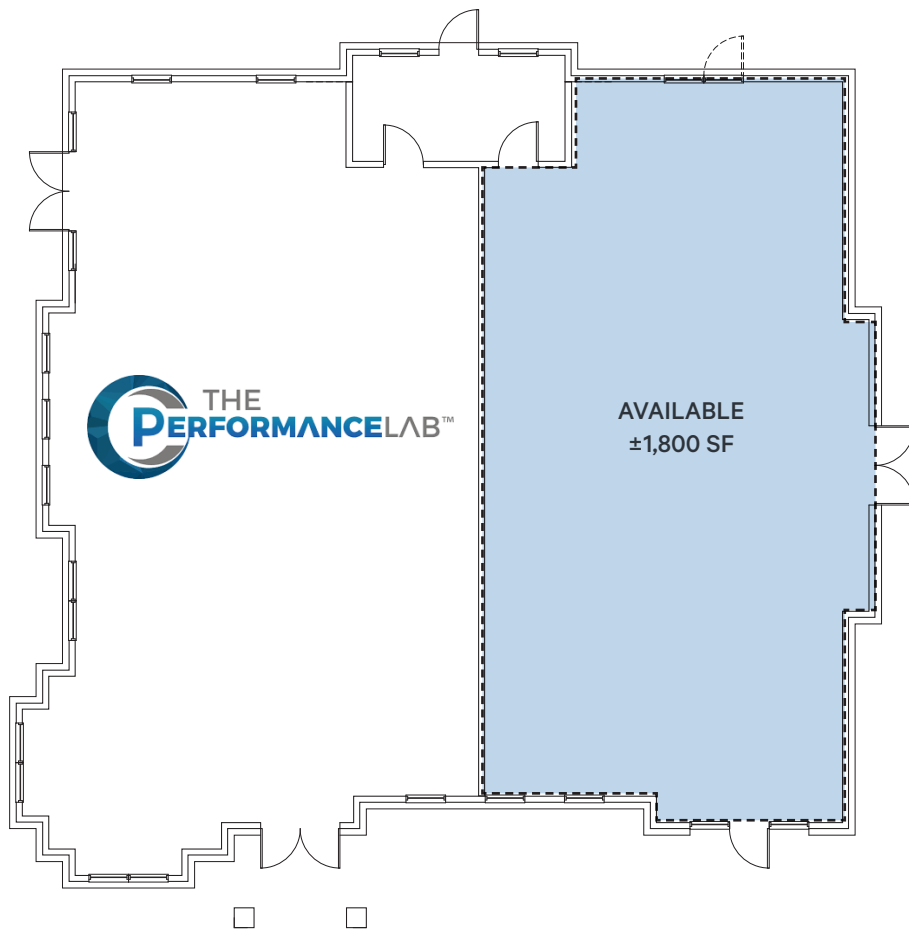
The Ridge at Talcott Mountain | 200 Hopmeadow St. | Simsbury, CT

For Lease

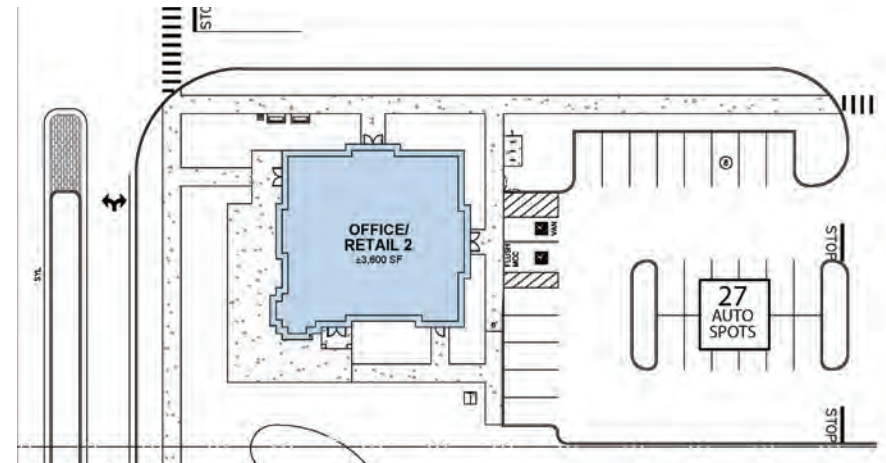
## Building A

±1,800 SF Available

Building A is a ±3,600 SF free-standing retail/office building with 27 parking spaces, outdoor seating and capacity to add drive-through lanes. Currently available space measures approximately 1,800 SF and has its own separate entrance. Asking rate is \$17.50/SF NNN.



Parking Lot - 27 spaces



±1,800 SF Retail/Office Space Available

The Ridge at Talcott Mountain | 200 Hopmeadow St. | Simsbury, CT

For Lease



## Contact Us

**John McCormick**  
Executive Vice President  
+1 860 987 4736  
john.mccormick@cbre.com

**Mike Puzzo**  
Senior Vice President  
+1 860 987 4705  
mike.puzzo@cbre.com

**Anna Kocsondy**  
Vice President  
+1 860 987 4749  
anna.kocsondy@cbre.com

© 2024 CBRE, Inc. All rights reserved. This information has been obtained from sources believed reliable, but has not been verified for accuracy or completeness. You should conduct a careful, independent investigation of the property and verify all information. Any reliance on this information is solely at your own risk. CBRE and the CBRE logo are service marks of CBRE, Inc. All other marks displayed on this document are the property of their respective owners, and the use of such logos does not imply any affiliation with or endorsement of CBRE. Photos herein are the property of their respective owners. Use of these images without the express written consent of the owner is prohibited.

[www.cbre.com/hartford](http://www.cbre.com/hartford)

