

FOR LEASE



179 TAYLOR STREET - EUGENE, OREGON 97402

WHITEAKER INDUSTRIAL BUILDING

- 10,826 TOTAL SQUARE FEET
 - 6,508 SQUARE FEET (MAIN BUILDING)
 - 4,318 SQUARE FEET (AUXILIARY BUILDING)
- 3-PHASE POWER
- ZONING: E-2 (MIXED-USE EMPLOYMENT)

Lease Rate: \$7,000 PER MONTH, NNN



For more information contact:

BILL NEWLAND | bill@campbellre.com
(541) 484-2214

Licensed in the State of Oregon

PAUL REDHEAD | paulr@campbellre.com
(541) 484-2214 (office) 541-505-0547 (cell)

Licensed in the State of Oregon

The information in this package was obtained from sources deemed reliable, and is not guaranteed by agent. Package is subject to change, error or omission, prior sale or lease, correction or withdrawal. Any party contemplating purchase is urged to conduct their own independent study and inspection.

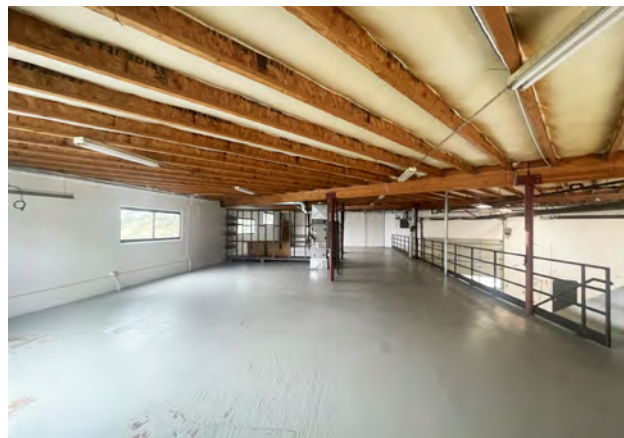
PROPERTY OVERVIEW

179 TAYLOR STREET (Main Building + Auxiliary)

BUILDING SIZE.....10,826 Total Square Feet
MAIN BUILDING OFFICE SPACE..... 1,373 Square Feet (approx.)
LOT SIZE.....0.37 Acres
LOADING CAPABILITY.....2 Grade Level Doors
POWER.....3-Phase
CEILING HEIGHT.....20 Feet (Approx.)

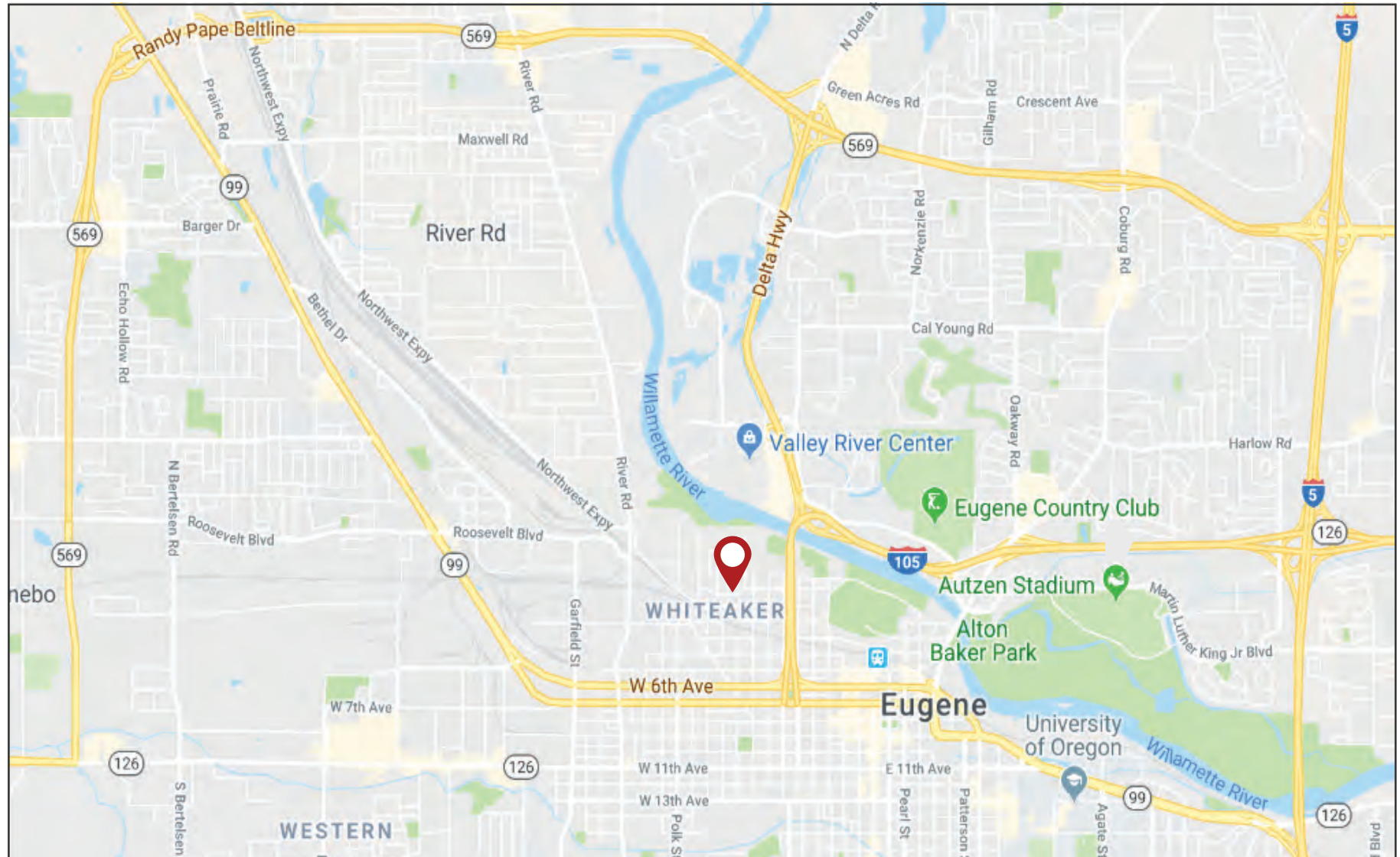


179 TAYLOR STREET



The information in this package was obtained from sources deemed reliable, and is not guaranteed by agent. Package is subject to change, error or omission, prior sale or lease, correction or withdrawal. Any party contemplating purchase is urged to conduct their own independent study and inspection.

PROPERTY LOCATION



The information in this package was obtained from sources deemed reliable, and is not guaranteed by agent. Package is subject to change, error or omission, prior sale or lease, correction or withdrawal. Any party contemplating purchase is urged to conduct their own independent study and inspection.