

# WEBSTER BUSINESS PARK

2410 MILAM DAIRY ROAD, MIAMI, FL 33122  
7,200 SF FOR LEASE



## VIDEO

## LOCATION DESCRIPTION

Situated on the corner of NW 25th Street and NW 72nd Avenue, Webster Business Park offers convenient access to all major thoroughfares as well as excellent frontage and exposure. Webster Park is only minutes away from the Palmetto Expressway which in turn provides access to every highway and port in the county. Miami International Airport and PortMiami are accessible within minutes from Dolphin Expressway, Broward County and Port Everglades from I-75 and I-95. Florida Turnpike is easily accessible to the West.

## PROPERTY FEATURES

- +/- 7,200 Sq. Ft. **Total Size**
- Private Offices + Conference Room + Open Layout
- Retail / Showroom
- Exposure to NW 25th St & Milam Dairy Rd ( NW 72 Ave)
- Operated as a Bank
- Pneumatic Tubes + Vault
- IT Room + Kitchen Area
- Several Restrooms
- Heavy Electrical Power
- Fully Fire Sprinkled

## MORE INFORMATION

**Alexander Bernaldo, SIOR**  
President  
786.337.7877  
Alex@AmericasCRE.com

**Bradford Ross, SIOR**  
Commercial Advisor  
786.337.7863  
brad@americascre.com

**Yusef Canaan**  
Commercial Associate  
786.337.7882  
Yusef@americascre.com



# WEBSTER BUSINESS PARK

2410 MILAM DAIRY ROAD, MIAMI, FL 33122  
7,200 SF FOR LEASE



## MORE INFORMATION

**Alexander Bernaldo, SIOR**  
President  
786.337.7877  
Alex@AmericasCRE.com

**Bradford Ross, SIOR**  
Commercial Advisor  
786.337.7863  
brad@americascre.com

**Yusef Canaan**  
Commercial Associate  
786.337.7882  
Yusef@americascre.com

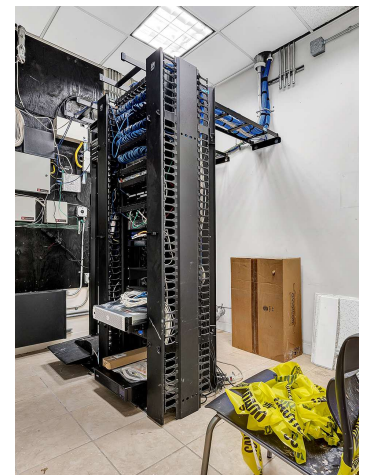
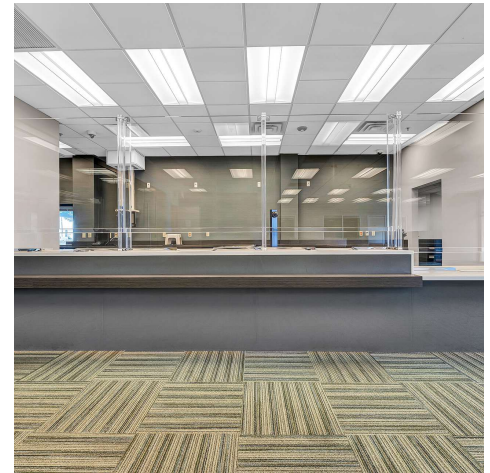
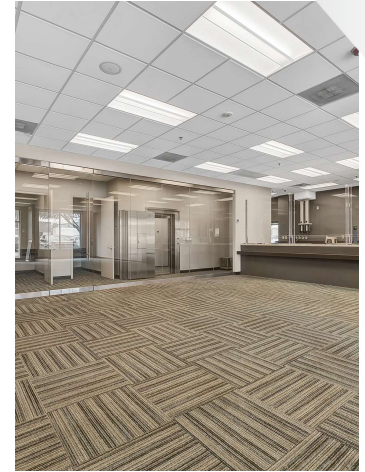






# WEBSTER BUSINESS PARK

2410 MILAM DAIRY ROAD, MIAMI, FL 33122  
7,200 SF FOR LEASE



## MORE INFORMATION

**Alexander Bernaldo, SIOR**  
President  
786.337.7877  
Alex@AmericasCRE.com

**Bradford Ross, SIOR**  
Commercial Advisor  
786.337.7863  
brad@americascre.com

**Yusef Canaan**  
Commercial Associate  
786.337.7882  
Yusef@americascre.com



Copyright © 2023 Americas Commercial Real Estate. Any information herewith is obtained from sources we consider reliable. However, we are not responsible for misstatement of facts, errors, omissions, prior sale, withdrawal from the market, modification of mortgage commitment, terms and conditions, or change in price without prior notice.