



## 711 Southwood Avenue

Columbus, Ohio 43207

### Property Features

- ±5,000 - 20,000 SF of Office Space Available
- Ideal for Non-Profit Businesses
- Professional Meeting Rooms and Private Offices
- Adjacent Ample Parking
- Private Entrances
- Up to ±50,000 SF of Warehouse Space if Needed
- Close Proximity to State Route 104

Lease Rates From: \$7.25 SF/yr (NNN)

[www.techsouthindustrial.com](http://www.techsouthindustrial.com)



For more information:

**Dan Sheeran, Jr.**

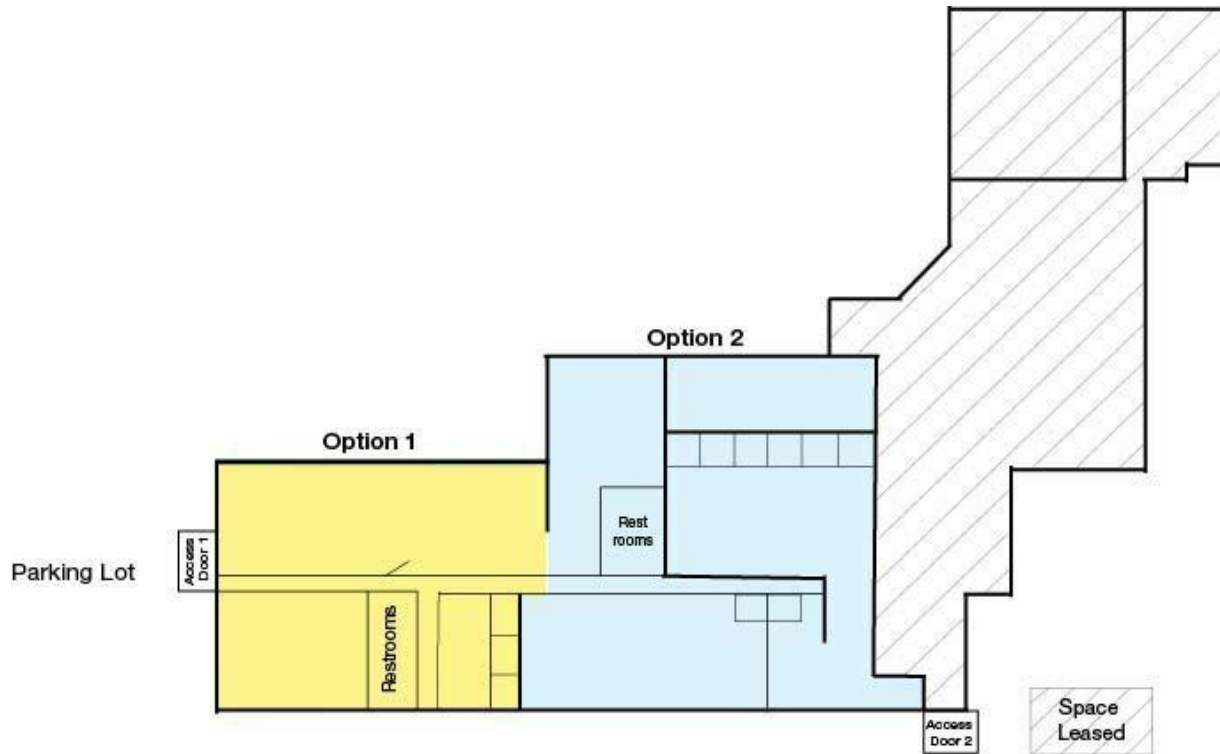
614 629 5228 • [djsheeran@ohioequities.com](mailto:djsheeran@ohioequities.com)

**Mike Semon**

614 629 5217 • [msemon@ohioequities.com](mailto:msemon@ohioequities.com)

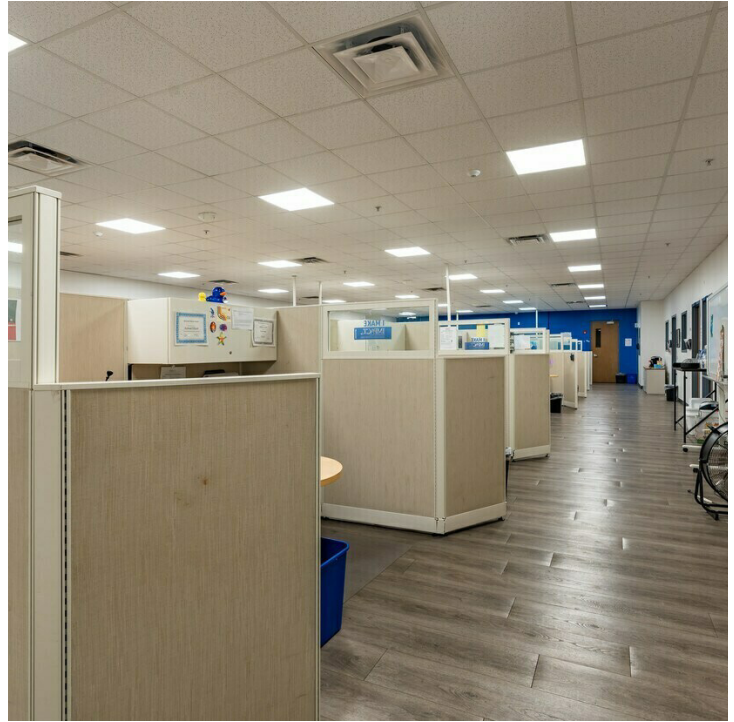
**Dan Sheeran**

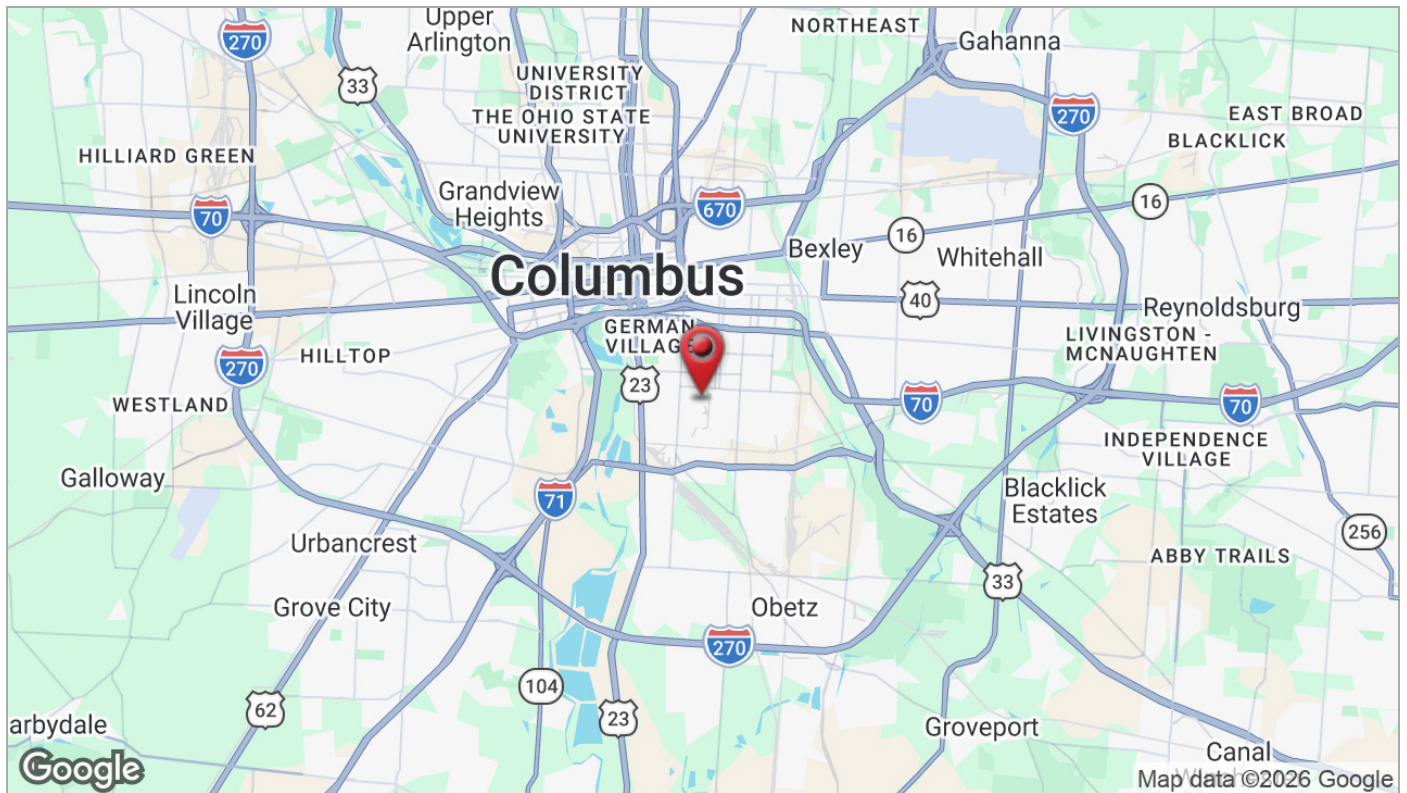
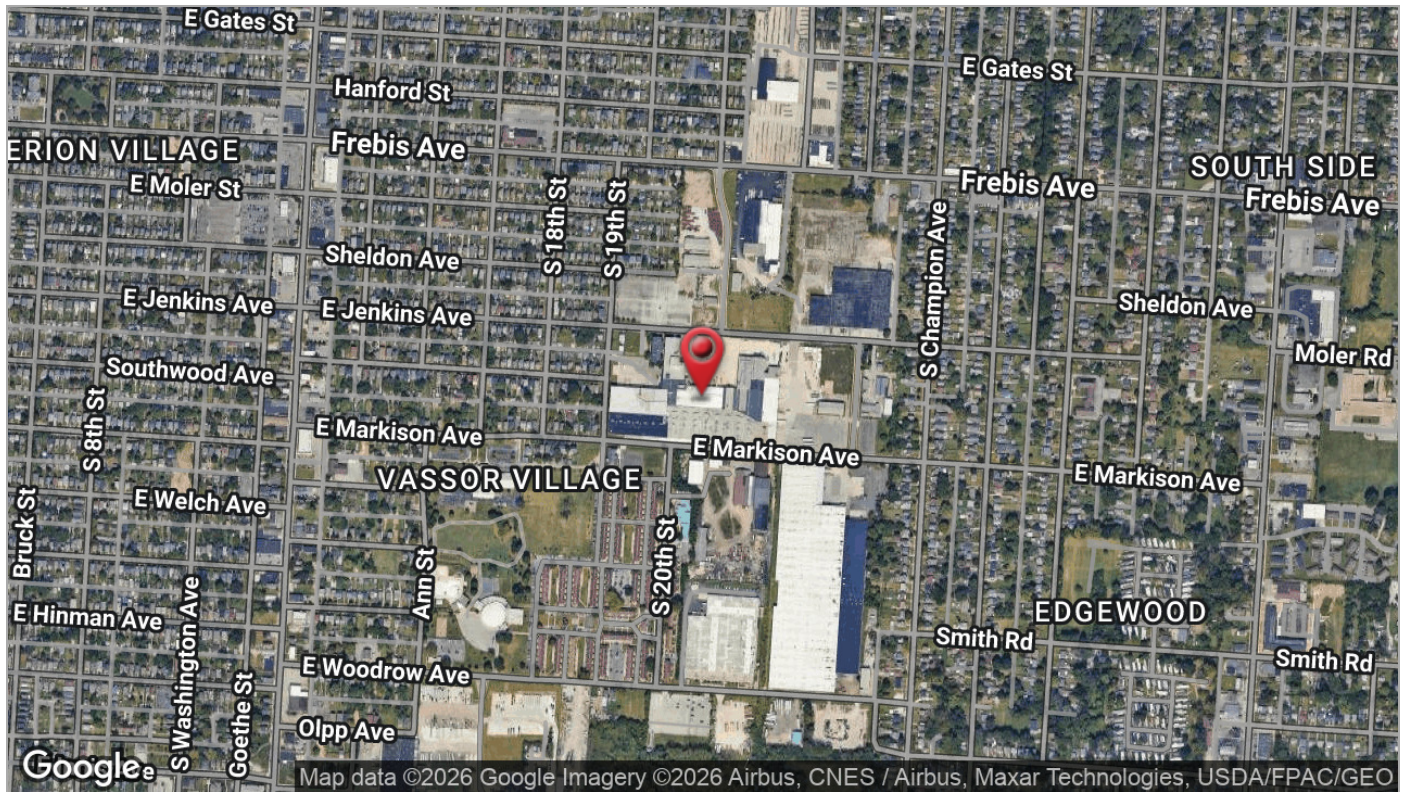
614 629 5216 • [dsheeran@ohioequities.com](mailto:dsheeran@ohioequities.com)

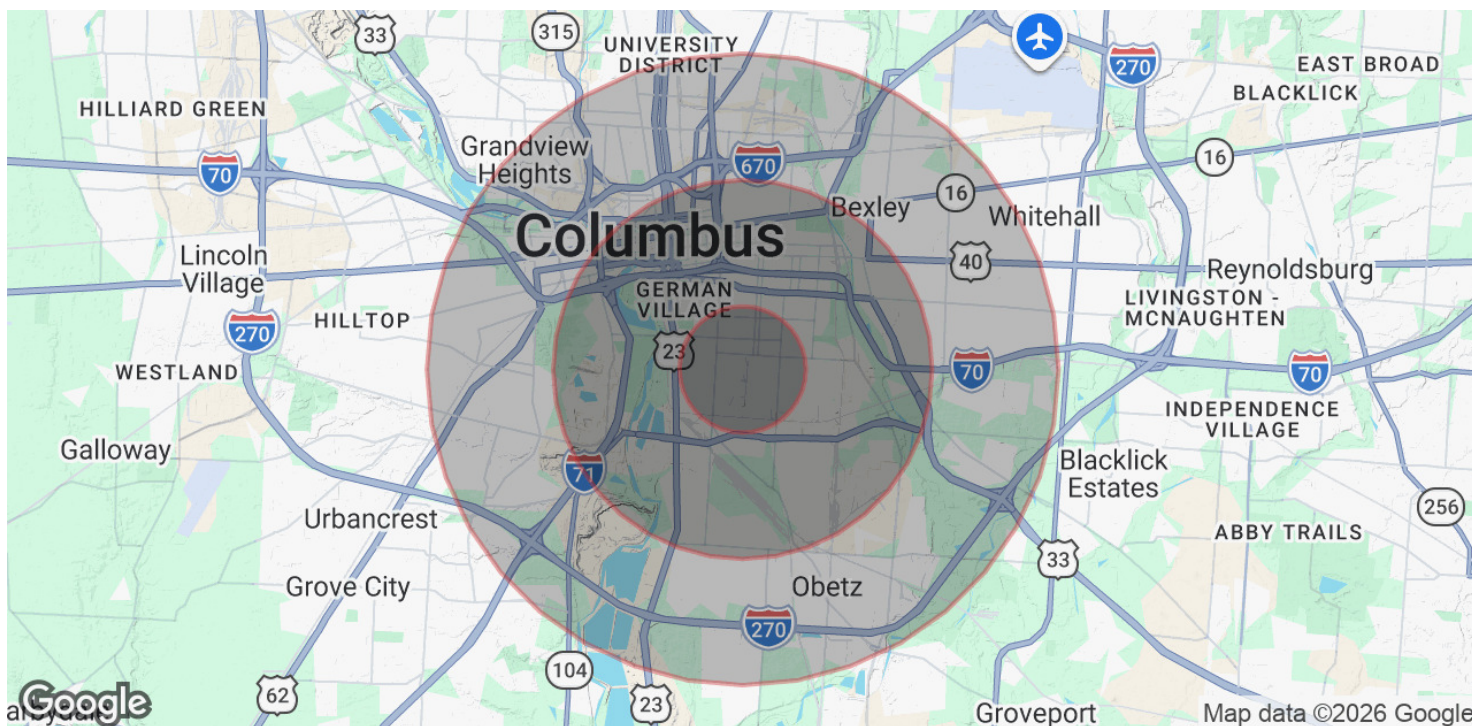


- First floor office areas from 5,000 - 20,000 SF with restrooms and private access
- 2 office layouts available based on tenant needs (all or part)









POPULATION	1 MILE	3 MILES	5 MILES
Total Population	17,513	95,091	263,712
Average Age	38	39	37
Average Age (Male)	38	38	36
Average Age (Female)	38	39	37
HOUSEHOLDS & INCOME	1 MILE	3 MILES	5 MILES
Total Households	7,650	44,064	113,772
# of Persons per HH	2.3	2.2	2.3
Average HH Income	\$70,792	\$76,430	\$77,190
Average House Value	\$236,234	\$336,872	\$310,041

Demographics data derived from AlphaMap