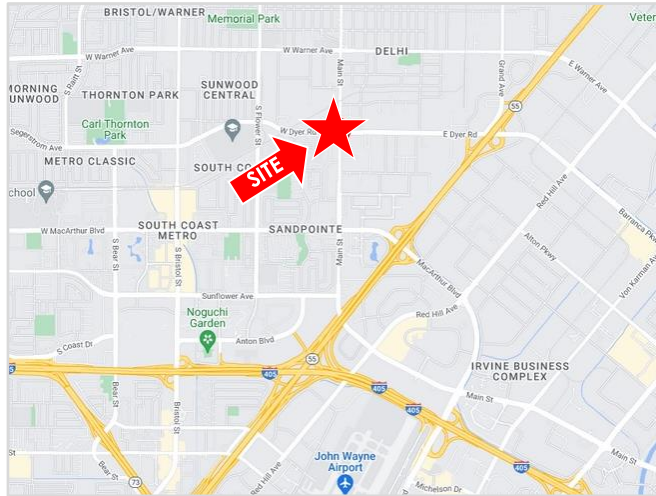





+3,700 SF 2ND GENERATION RESTAURANT

FOR LEASE | 2860 S. MAIN ST • SANTA ANA, CA

PROPERTY FEATURES

- Available for Lease (or Ground Lease)
- 0.55-acre parcel
- Excellent corner location with easy access
- SHOWN BY APPOINTMENT ONLY, DO NOT DISTURB TENANT



 POPULATION	 AVG HOUSEHOLD INCOME	 DAYTIME POPULATION
1-mile 25,364	1-mile \$124,022	1-mile 34,745
3-mile 241,838	3-mile \$101,936	3-mile 366,249
5-mile 634,966	5-mile \$112,433	5-mile 757,294

Source: Sites USA, 2022

TRAFFIC COUNTS

Main Street	36,000 cars per day
Dyer Road	32,000 cars per day

Source: OCTA

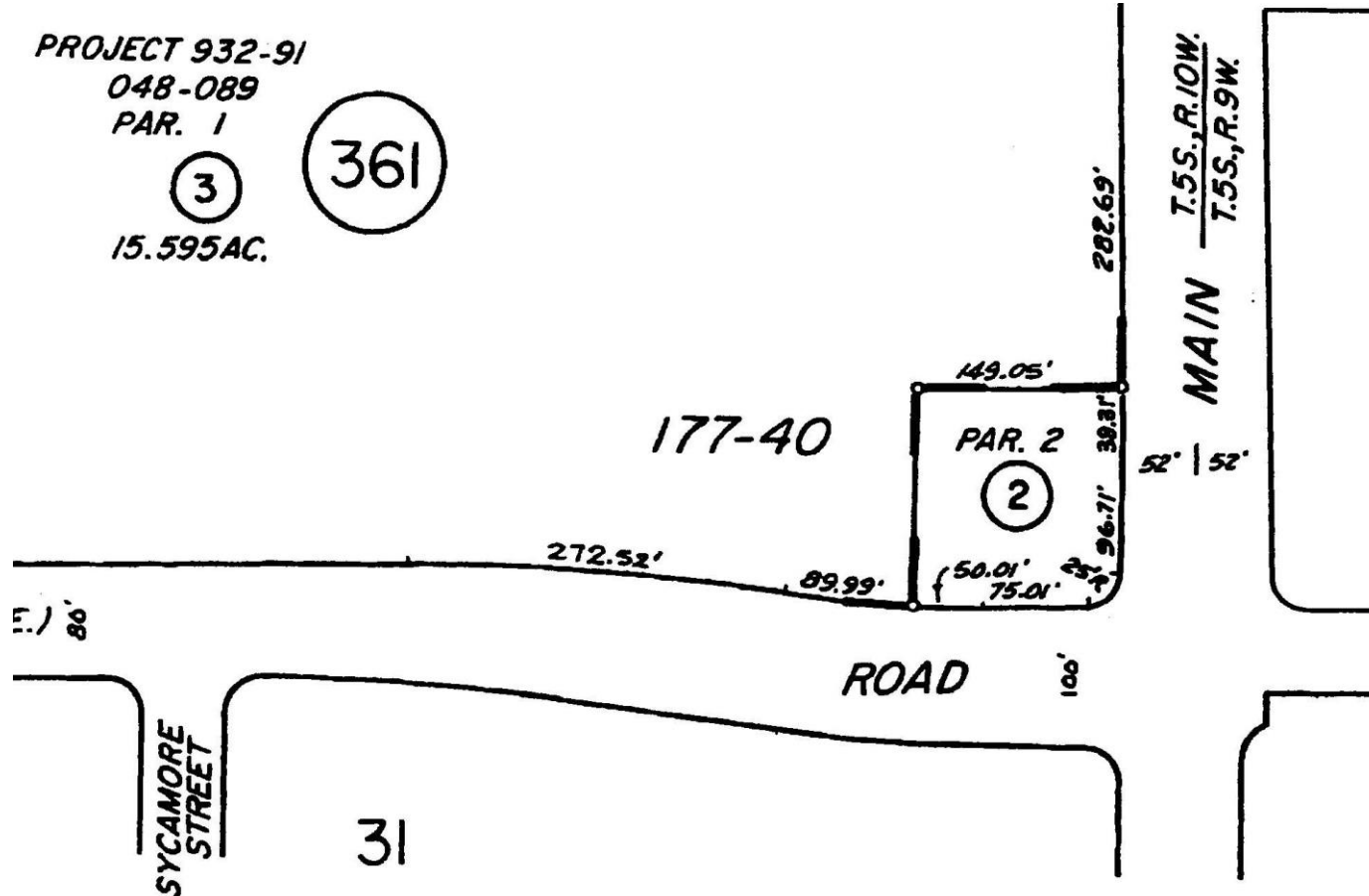


For More Information, Please Contact:

Wally Limburg	CalBRE Lic: 00468578	949.640.6678 x12	wally.limburg@sra-re.com
Jeff Reenders	CalBRE Lic: 01349955	949.640.6678 x15	jeff.reenders@sra-re.com

FOR LEASE | 2860 S. MAIN ST • SANTA ANA, CA

PARCEL 2 – 23,958 SF



For More Information, Please Contact:

Wally Limburg		CalBRE Lic: 00468578		949.640.6678 x12		wally.limburg@sra-re.com
Jeff Reenders		CalBRE Lic: 01349955		949.640.6678 x15		jeff.reenders@sra-re.com

2860 S Main St

Santa Ana, CA 92707

October 2022



2860 S Main St
Santa Ana, CA 92707

October 2022

ording Connection
Audio Institute



Main St



oyer Rd

E Dy

London Way

Lords Ln



SRA

Google
lamons Wy

Summary Profile

2010-2020 Census, 2022 Estimates with 2027 Projections
Calculated using Weighted Block Centroid from Block Groups

Wally Limburg
Lat/Lon: 33.709/-117.8683



2860 S Main St

Santa Ana, CA 92707

1 mi
radius

3 mi
radius

5 mi
radius

Population

2022 Estimated Population	25,364	241,838	634,966
2027 Projected Population	25,238	244,710	642,213
2020 Census Population	25,722	244,643	641,432
2010 Census Population	27,562	243,643	628,353
Projected Annual Growth 2022 to 2027	-	0.2%	0.2%
Historical Annual Growth 2010 to 2022	-0.7%	-	-
2022 Median Age	33.2	32.1	34.2

Households

2022 Estimated Households	6,286	65,760	193,340
2027 Projected Households	6,275	67,294	196,654
2020 Census Households	6,393	66,356	194,860
2010 Census Households	6,177	59,198	182,383
Projected Annual Growth 2022 to 2027	-	0.5%	0.3%
Historical Annual Growth 2010 to 2022	0.1%	0.9%	0.5%

Race and Ethnicity

2022 Estimated White	25.7%	26.5%	32.7%
2022 Estimated Black or African American	1.3%	2.7%	2.0%
2022 Estimated Asian or Pacific Islander	10.7%	12.4%	21.3%
2022 Estimated American Indian or Native Alaskan	3.6%	3.2%	2.0%
2022 Estimated Other Races	58.7%	55.1%	41.9%
2022 Estimated Hispanic	74.9%	69.0%	50.2%

Income

2022 Estimated Average Household Income	\$124,022	\$101,936	\$112,433
2022 Estimated Median Household Income	\$97,619	\$84,416	\$90,557
2022 Estimated Per Capita Income	\$30,862	\$28,003	\$34,533

Education (Age 25+)

2022 Estimated Elementary (Grade Level 0 to 8)	17.2%	19.2%	13.0%
2022 Estimated Some High School (Grade Level 9 to 11)	15.0%	13.9%	10.2%
2022 Estimated High School Graduate	22.9%	21.0%	18.7%
2022 Estimated Some College	19.0%	16.3%	17.8%
2022 Estimated Associates Degree Only	6.9%	5.6%	6.3%
2022 Estimated Bachelors Degree Only	14.1%	16.6%	21.9%
2022 Estimated Graduate Degree	4.8%	7.4%	12.1%

Business

2022 Estimated Total Businesses	1,825	20,023	42,440
2022 Estimated Total Employees	27,554	296,595	559,293
2022 Estimated Employee Population per Business	15.1	14.8	13.2
2022 Estimated Residential Population per Business	13.9	12.1	15.0