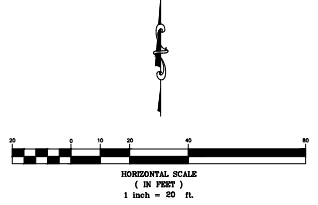



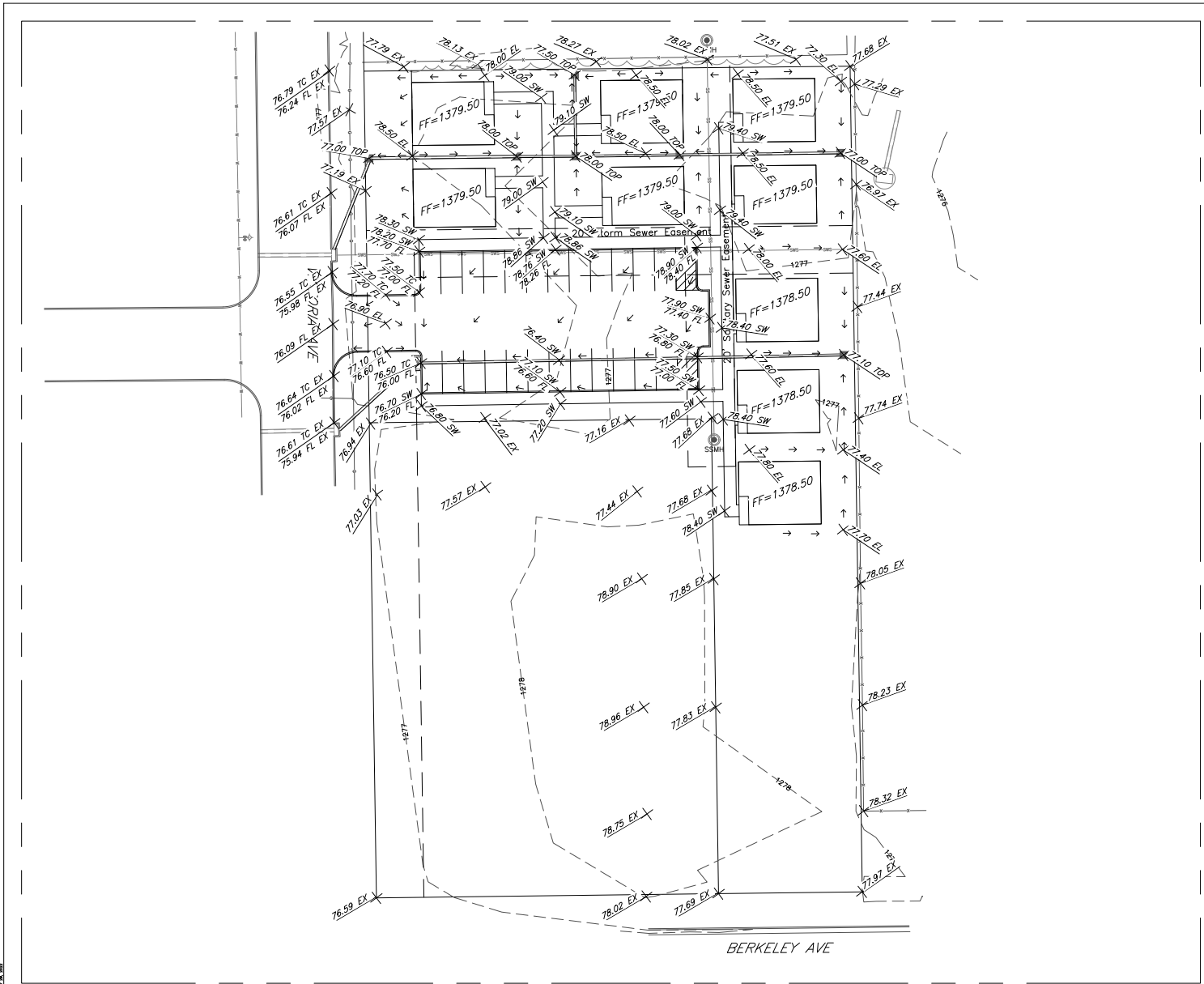
LEGAL DESCRIPTION:
 BLOCK 16 EXCLUDING THE
 SOUTH 200 FT OF THE WEST
 144 FT & EXCLUDING THE
 EAST 459.5 FT & EXCLUDING
 THE NORTH 120 FT THEREOF
 RAINBOW FIRST ADDITION



3240 S. Victoria Duplexes
Site Plan
 Wichita, Kansas

PROJECT NUMBER			
 117 E. Lusk, Wichita, KS 67202 (316)264-0242	KEM NO.	FILE	DATE
	22075	KJM	11/2022
DESIGN	DRAWN	REVISED	SHEET
KJM	PG		1.0

November 29, 2022



LEGAL DESCRIPTION:

BLOCK 16 EXCLUDING THE SOUTH 200 FT OF THE WEST 144 FT & EXCLUDING THE EAST 459.5 FT & EXCLUDING THE NORTH 120 FT THEREOF RAINBOW FIRST ADDITION



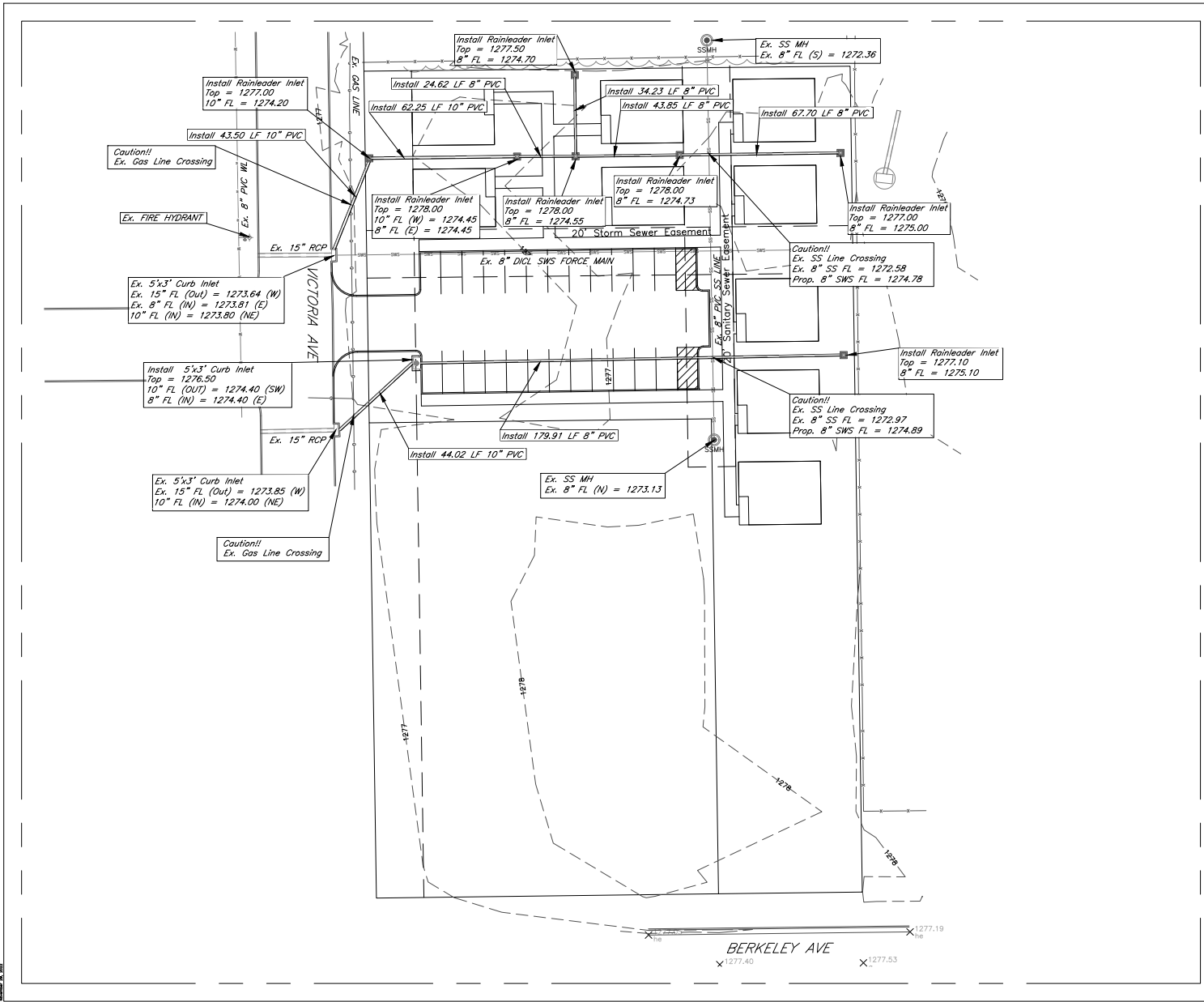
HORIZONTAL SCALE
(IN FEET)
1 inch = 50 ft.

3240 S. Victoria Duplexes
Grading Plan
Wichita, Kansas

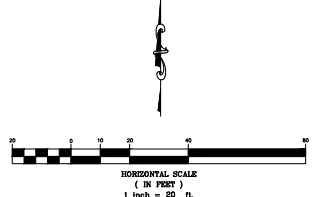
PROJECT NUMBER

	KEM NO.	FILE	DATE	SHEET
	22075	KM	11/2022	2.0
	DESIGN	DRAWN	REVISED	
	KM	PG		

117 E. Lincoln, Wichita, KS 67202 (316)264-0242



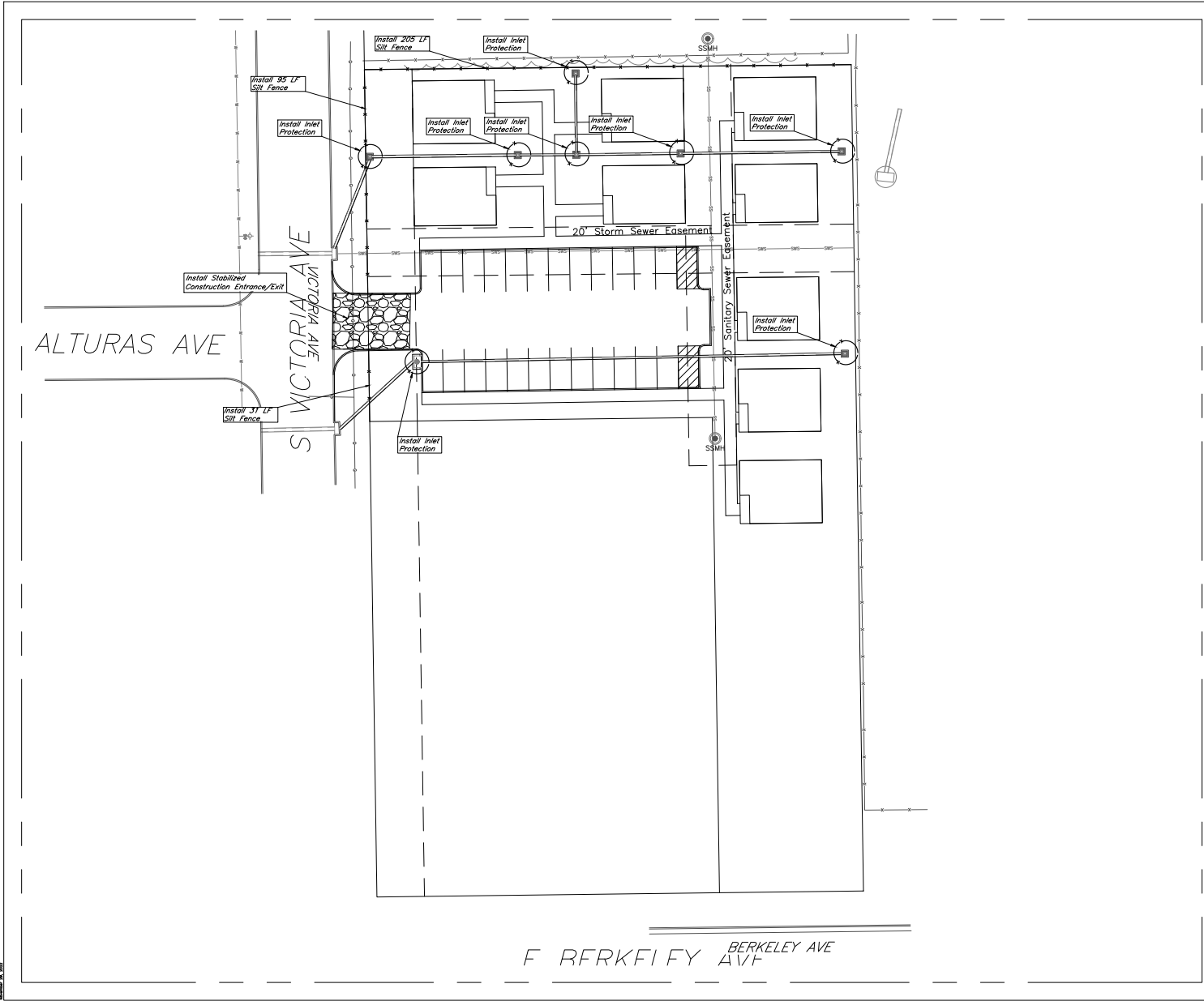
LEGAL DESCRIPTION:
 BLOCK 16 EXCLUDING THE SOUTH 200 FT OF THE WEST 144 FT & EXCLUDING THE EAST 459.5 FT & EXCLUDING THE NORTH 120 FT THEREOF RAINBOW FIRST ADDITION



3240 S. Victoria Duplexes
 Utility Plan
 Wichita, Kansas

	PROJECT NUMBER			SHEET
	KEM NO. 22075	FILE	DATE 11/2022	
DESIGN KJM	DRAWN PG	REVISED		

117 E. Leola, Wichita, KS 67202 (316)264-0242



General Notes:

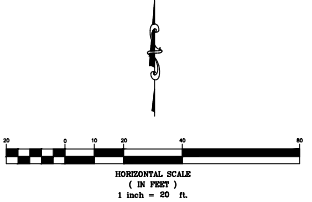
1. The BMP's shown on this sheet are considered minimum standards. Whenever sediment enters the streets, storm sewers, ditches, or ponds, contractor will install additional BMP's, as needed, to correct the problem.
2. The soil erosion BMP's shown hereon must be in place at all times during construction until such time as the site is re-established with paving or grass.
3. Back of curb protection can include hay bale, silt fence, Curlex barrier, or approved alternate as shown on BMP standard details. This BMP must remain in place until the area between the curb and right-of-way line has been permanently stabilized.
4. The General Contractor is responsible for the installation and maintenance per the prevention maintenance plan.
5. Concrete trucks will be permitted to wash out only at approved locations. They maintain and clean up as conditions require, by contractor. No hazardous materials are expected to be encountered. Any spills (diesel, fuel, oil, etc.) will be cleaned up and removed immediately. Portable toilets will be supplied and maintained at various sites along the project. Disposal of sewage will be handled by a contracting firm specializing in this activity.
6. The above mentioned storm water prevention methods will be monitored daily and maintained as required. A weekly erosion control log will be posted in the job trailer onsite, and updated weekly. Site inspections are required within 24 hours after a precipitation event of 0.5" or greater.
7. Stabilize disturbed areas within 14 days after soil disturbing activities cease. Stabilize with mulch or similarly effective BMP's, in addition to seeding.

LEGEND:

- Flow Direction
- Inlet Protection - to be provided at all inlets subject to silt laden runoff.
- Ditch Check
- Temporary Seeding and Matting.
- Silt Fence or Hay Bale Barrier - to be installed along property lines where runoff from construction site can run onto other properties.
- Stabilized Construction Entrance - to be used at all locations where vehicles or equipment enter or exit property.
- Back of Curb Protection - to be installed whenever curb is backfilled to less than 3 inches from top and disturbed earth exists adjacent thereto. (See City Standard Details.)

LEGAL DESCRIPTION:

BLOCK 16 EXCLUDING THE SOUTH 200 FT OF THE WEST 144 FT & EXCLUDING THE EAST 459.5 FT & EXCLUDING THE NORTH 120 FT THEREOF RAINBOW FIRST ADDITION



3240 S. Victoria Duplexes
Erosion Control Plan
Wichita, Kansas

	PROJECT NUMBER			SHEET
	KEM NO. 22075	FILE	DATE 11/2022	
DESIGN KJM	DRAWN PG	REVISED		

117 E. Lomb, Wichita, KS 67202 (316)284-0242