

1021 S FAIRFAX AVE

LOS ANGELES, CA 90019



±1,500 SF

BUILDING SIZE

±2,750 SF

LAND SIZE

\$1.95/SF

LEASE RATE (NNN)

*±1,500 SF of versatile open floor
retail space in a heavy traffic
location with maximum exposure*

Close to numerous popular restaurants and retailers

High ceiling clearance and one restroom

Rear secure, gated yard area with small shed

Includes parking off the alley for 4 vehicles

One ground level loading door (9x7)

25' frontage on Fairfax Ave – 110' deep

Zoned LA C2-1-O

NNN charges = \$0.70/SF per month (approximately)

1-3/4 miles north of the Santa Monica (I-10) Freeway

Located just south of the intersection of Olympic
Blvd and San Vicente Blvd

For more information contact

STEPHAN KTORZA

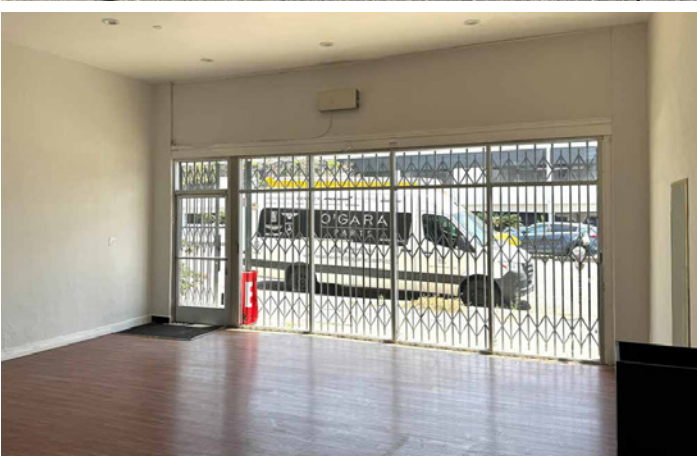
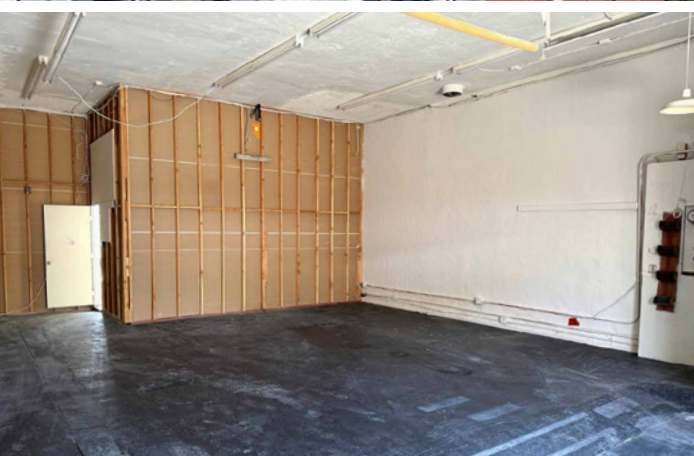
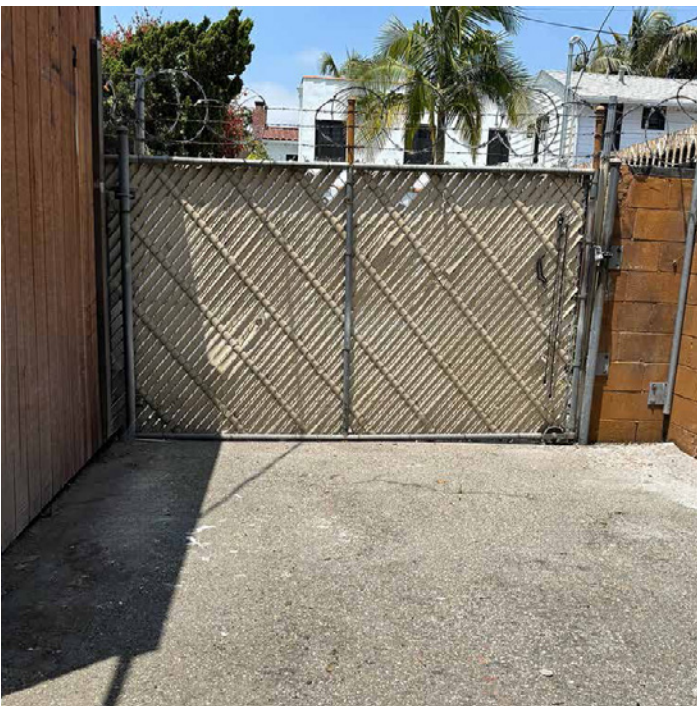
310.909.6409 | stephan.ktorza@kidder.com

LIC N° 01758229

KIDDER.COM

This information supplied herein is from sources we deem reliable. It is provided without any representation, warranty, or guarantee, expressed or implied as to its accuracy. Prospective Buyer or Tenant should conduct an independent investigation and verification of all matters deemed to be material, including, but not limited to, statements of income and expenses. Consult your attorney, accountant, or other professional advisor. All Kidder Mathews designs are the sole property of Kidder Mathews. Branded materials and layouts are not authorized for use by any other firm or person.

FOR LEASE | 1021 S FAIRFAX AVE



KIDDER.COM

This information supplied herein is from sources we deem reliable. It is provided without any representation, warranty, or guarantee, expressed or implied as to its accuracy. Prospective Buyer or Tenant should conduct an independent investigation and verification of all matters deemed to be material, including, but not limited to, statements of income and expenses. Consult your attorney, accountant, or other professional advisor. All Kidder Mathews designs are the sole property of Kidder Mathews. Branded materials and layouts are not authorized for use by any other firm or person.



