



Keegan & Coppin
COMPANY, INC.

FOR LEASE

4210B & 4212
PETALUMA BLVD N.

**SMALL WAREHOUSE
& FRONT RETAIL UNIT**



Go beyond broker.

REPRESENTED BY

DEMI BASILIADES, SREA
LIC # 02080190 (707) 664-1400, EXT 305
DBASILIADES@KEEGANCOPPIN.COM

MIKE FLITNER, PARTNER
LIC # 00840890 (707) 528-1400, EXT 239
MFLITNER@KEEGANCOPPIN.COM



PROPERTY INFORMATION



4210B & 4212
PETALUMA BLVD N

**SMALL WAREHOUSE
& FRONT RETAIL UNIT**

PROPERTY DESCRIPTION

Property has new paint, freshly-paved driveways and is cleanly kept with property management.

AVAILABLE SPACE

AVAILABILITIES

DESCRIPTION

4210B PETALUMA BLVD N. 1,000+/- sq ft

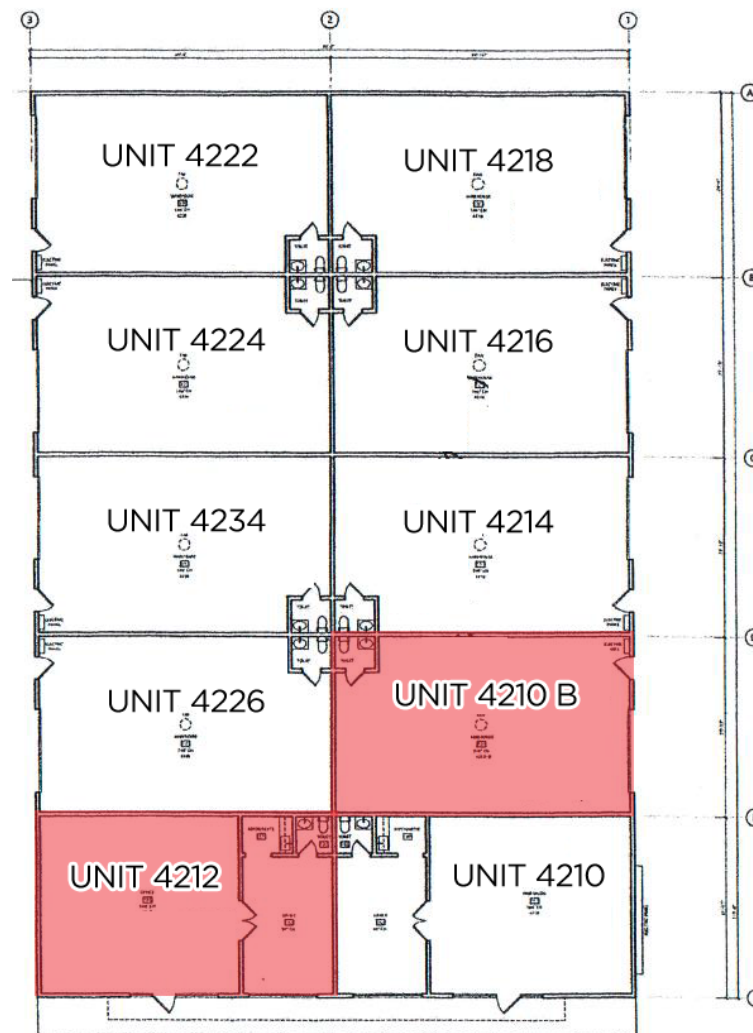
A clean, small warehouse with fresh paint, a 11' x 10' roll-up door and 50 amps of power.

- 13' Clear Height
- Private Restroom
- \$1,375/month plus \$85/month CAM

4212 PETALUMA BLVD N. 1,000+/- sq ft

A front retail unit with great Petaluma Blvd N. identity. Open floor plan, private restroom.

- Large Sign Visibility
- \$1,500/month plus \$85/month CAM
- Available with a 30-day notice.





PHOTOS



4210B & 4212
PETALUMA BLVD N

**SMALL WAREHOUSE
& FRONT RETAIL UNIT**





AERIAL MAP



4210B & 4212
PETALUMA BLVD N

SMALL WAREHOUSE
& FRONT RETAIL UNIT



Keegan & Coppin Co., Inc.
1201 North McDowell Avenue
Petaluma, CA 94954
www.keegancoppin.com
(707) 664-1400

The above information, while not guaranteed, has been secured from sources we believe to be reliable. Submitted subject to error, change or withdrawal. An interested party should verify the status of the property and the information herein.

REPRESENTED BY:

DEMI BASILIADES, SREA
LIC # 02080190 (707) 664-1400, EXT 305
DBASILIADES@KEEGANCOPPIN.COM

MIKE FLITNER, PARTNER
LIC # 00840890 (707) 528-1400, EXT 239
MFLITNER@KEEGANCOPPIN.COM