



**25,272 SF AVAILABLE**

**900 Westlake Parkway**

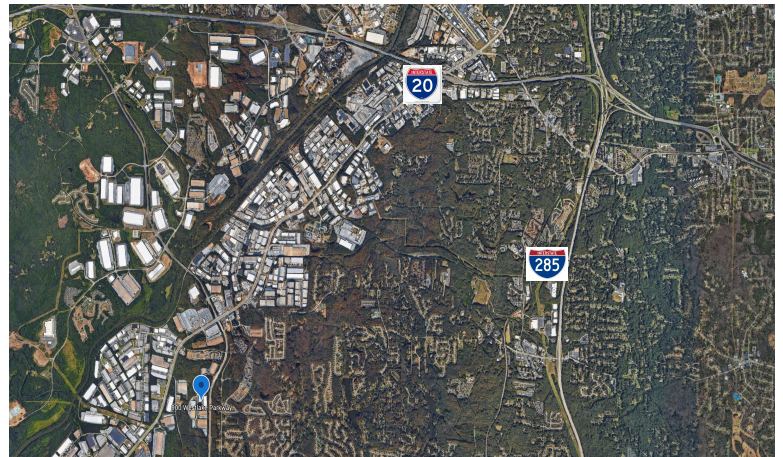
Suite 100  
Atlanta, GA 30336

**FOR LEASE**



### PROPERTY INFORMATION

Total Size:	25,272 SF
Office:	1,070 SF
Warehouse:	24,202 SF
Dock High:	10 Doors
Drive-In:	1 Oversized Ramp (12' x 14')
Clear Height:	24'
Column Spacing:	40' x 40'
Lighting:	LEDs on Motion Sensors
Electrical:	400 Amps @ 277/480 Volts
Available:	Immediately



**APEX INDUSTRIAL**  
REAL ESTATE ADVISORS

3500 Lenox Road | Suite 1275 | Atlanta, GA 30326 | [apexindustrialre.com](http://apexindustrialre.com)

For more information,  
please contact:

**RYAN BLACKBURN**

Office: (404) 974-2716

Cell: (404) 821-7715

[rblackburn@apexindustrialre.com](mailto:rblackburn@apexindustrialre.com)

Although the information contained therein was provided from sources believed to be reliable, Apex Industrial makes no representation, expressed or implied, as to its accuracy and said information is subject to errors, omissions or changes.

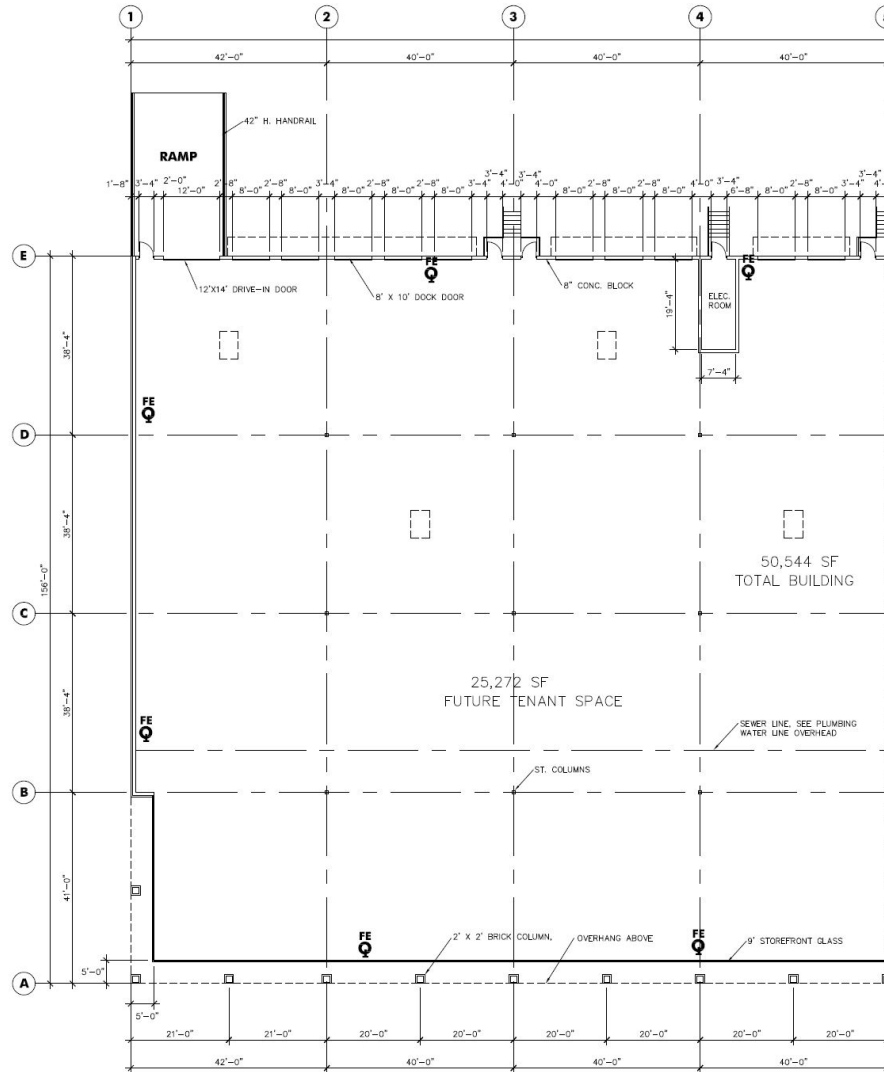
## 25,272 SF AVAILABLE

# 900 Westlake Parkway

## Suite 100

Atlanta, GA 30336

# FLOOR PLAN



**APEX INDUSTRIAL**  
REAL ESTATE ADVISORS

3500 Lenox Road | Suite 1275 | Atlanta, GA 30326 | [apexindustrialre.com](http://apexindustrialre.com)

For more information,  
please contact:

RYAN BLACKBURN

Office: (404) 974-2716

Cell: (404) 821-7715

rblackburn@apexindustrialre.com

Although the information contained therein was provided from sources believed to be reliable, Apex Industrial makes no representation, expressed or implied, as to its accuracy and said information is subject to errors, omissions or changes.