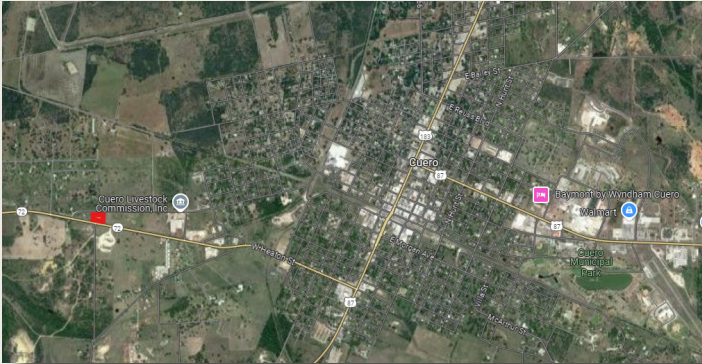


# FOR SALE ~ 1.34 ACRE COMMERCIAL TRACT

1552 TX-72, CUERO, TX 77954



<b>LOCATION:</b>	This property is located on the north side of State Hwy 72, one of the main thoroughfares of Cuero on the west side of town.	<b>TOPOGRAPHY:</b>	Flat
<b>SIZE:</b>	Approximately 1.34 Acres	<b>FLOOD HAZARD:</b>	The Property does not reside in the FEMA Floodplain
<b>FRONTAGE/ ACCESS:</b>	Property may be accessed from two existing curb cuts on Hwy 72, or on the north side of the property on Bridge Street.	<b>SCHOOL DISTRICT:</b>	Cuero ISD
<b>UTILITIES:</b>	Water, Electricity	<b>JURISDICTION:</b>	DeWitt County
<b>ZONING:</b>	Commercial - Outside Ceuro City Limits	<b>PRICE:</b>	Contact Broker for Pricing
		<b>COMMENTS:</b>	Former Gas Station that could continue to be operated in the same use, otherwise can be repurposed for a wide variety of use.

**CONTACT  
FOR PRICING**

**BRYAN MCMURREY**  
Managing Director  
512.314.3971  
bryan.mcmurrey@transwestern.com

**RYE HINKLE**  
Senior Associate  
512.314.5215  
rye.hinkle@transwestern.com