

WAIALUA SUGAR MILL



MOKULEIA

WAIALUA

WAIALUA
SUGAR
MILL

HALEIWA

KAMEHAMEHA HWY

JOSEPH P. LEONG HWY

FARRINGTON HWY

KAMEHAMEHA HWY

PRESENTED TO YOU BY:



CUSHMAN &
WAKEFIELD

ChaneyBrooks

AVAILABLE FOR LEASE

WAIALUA SUGAR MILL

Introducing Waialua Sugar Mill, 25 acres of I-2 zoned land available on the North Shore of O'ahu. Originally a sugar refinery from the 1800's, this property is now home to a variety of users including a soap factory, coffee and chocolate mill, surfboard repair shops, and auto users. Great spot for anyone who does business on the North Shore! Build to suit options available, please give us a call.

The Enterprise Zones (EZ) Partnership Program gives State & County benefits to companies in an effort to stimulate business activity, job preservation, and job creation in areas where they are most appropriate or most needed. If your business meets the eligibility requirements and you enroll in the program you can reduce your State taxes and receive other county benefits for up to seven years!

Click here to learn more: <https://invest.hawaii.gov/business/ez/>



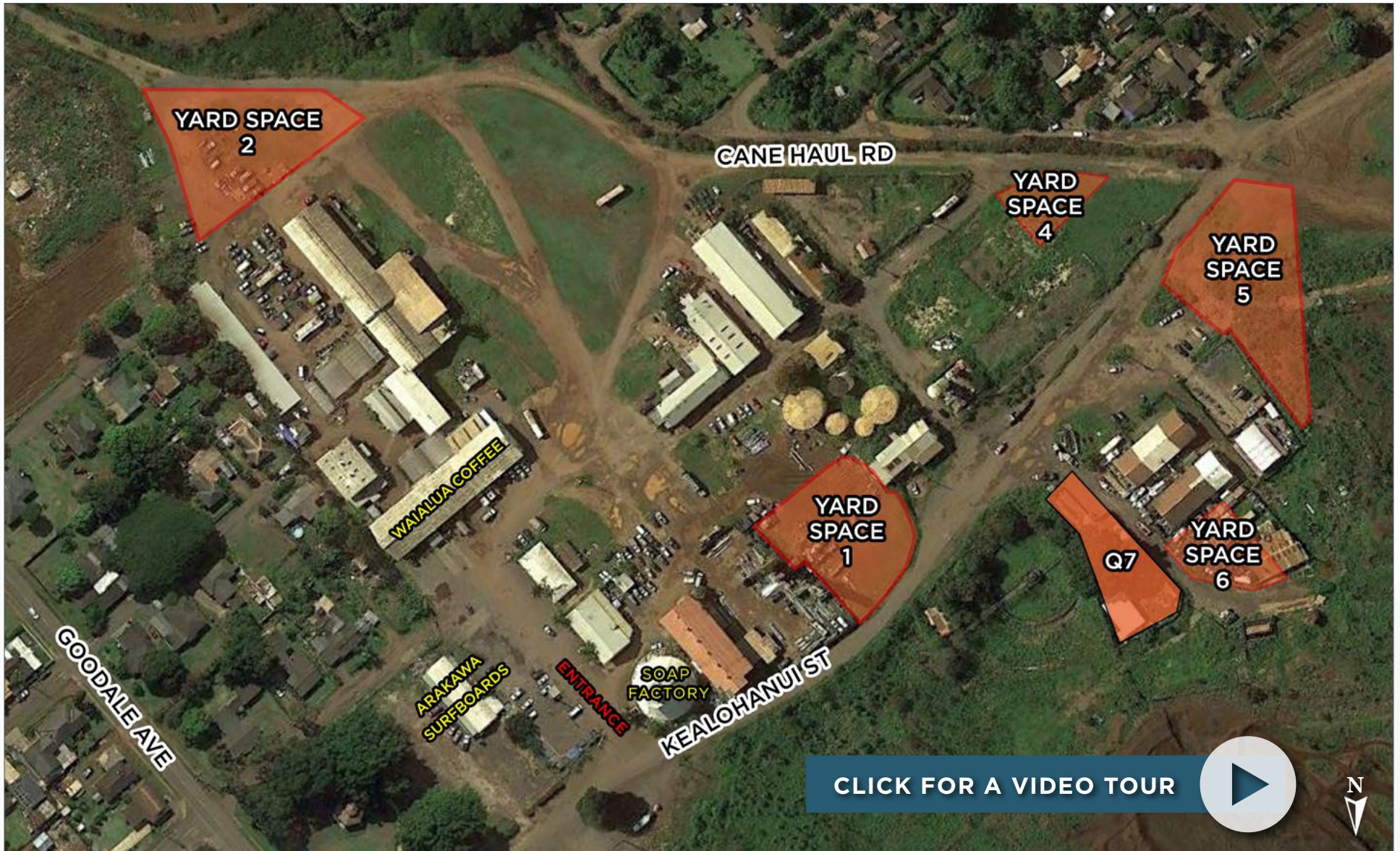
CONTACT

ANTHONY PROVENZANO (B) SIOR, CCIM
Senior Vice President
+1 808 387 3444
aprovenzano@chaneybrooks.com

KELLY A. VEA (S)
Senior Associate
+1 808 489 2703
kvea@chaneybrooks.com

TREVOR BLAKE (S)
Real Estate Advisor
+1 808 778 7409
tblake@chaneybrooks.com





CONTACT

ANTHONY PROVENZANO (B) SIOR, CCIM
Senior Vice President
+1 808 387 3444
aprovenzano@chaneybrooks.com

KELLY A. VEA (S)
Senior Associate
+1 808 489 2703
kvea@chaneybrooks.com

TREVOR BLAKE (S)
Real Estate Advisor
+1 808 778 7409
tblake@chaneybrooks.com



WAIALUA SUGAR MILL



CUSHMAN &
WAKEFIELD

ChaneyBrooks

1440 KAPIOLANI BLVD., SUITE 1010 | HONOLULU, HI 96814



Yard Space 4



Yard Space 1

AVAILABLE YARD SPACE

YARD SPACE: \$0.30/SF/MO

<u>SPACE</u>	<u>SIZE</u>	<u>MONTHLY RENT</u>
YARD SPACE 1:	23,000 SF	\$6,900.00
YARD SPACE 2:	18,000 SF	\$5,400.00
YARD SPACE 4:	7,800 SF	\$2,340.00
YARD SPACE 5:	27,000 SF	\$8,100.00
YARD SPACE 6:	16,000 SF	\$4,800.00
Q7:	15,000 SF	\$4,500.00

CAM: **\$0.17/SF/MO**

CONTACT

ANTHONY PROVENZANO (B) CCIM, SIOR
Senior Vice President
+1 808 387 3444
aprovenzano@chaneybrooks.com

KELLY A. VEA (S)
Senior Associate
+1 808 489 2703
kvea@chaneybrooks.com

TREVOR BLAKE (S)
Real Estate Advisor
+1 808 778 7409
tblake@chaneybrooks.com

