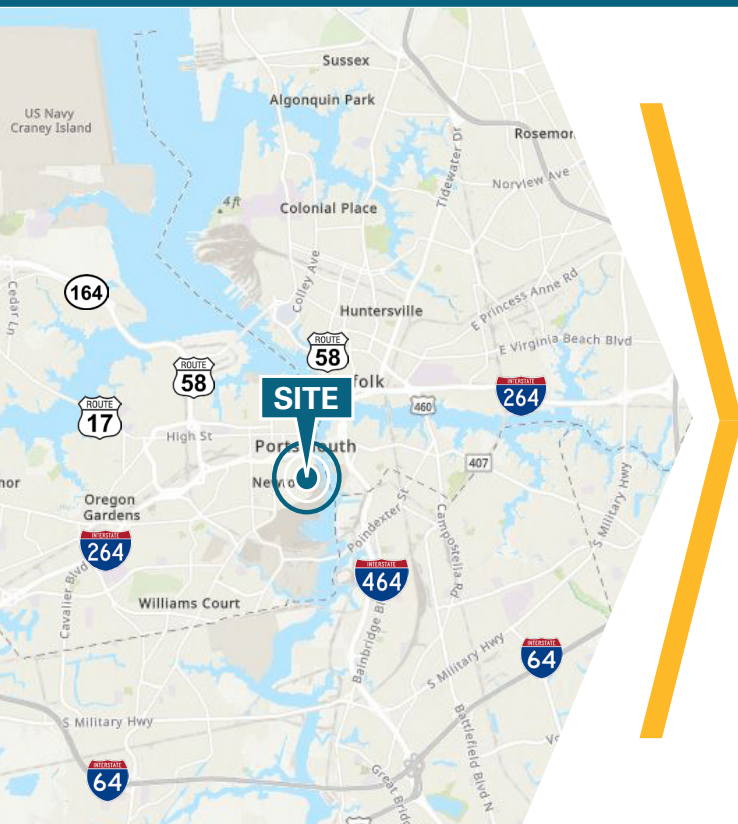


FOR LEASE OFFICE | WAREHOUSE

901 Port Centre Parkway, Portsmouth, VA



ABOUT PROPERTY

- Suite 10 : 6,650 SF
 - 3,650 SF Office
 - 3,000 SF Warehouse
- 3 Phase, 200 AMP
- (2) Grade Level 10' x 12' Doors
- 22' Ceiling Height with Skylights
- Zoned I-L (Light Industrial)
- LEASE RATE: \$10.95 PSF, NNN (\$2.20 psf)

For more information:
BOBBY BEASLEY, III, SIOR
757.640.8241
BobbyBeasley3@harveylindsay.com

HARVEY LINDSAY
COMMERCIAL REAL ESTATE

www.harveylindsay.com

901 Port Centre Parkway, Portsmouth, VA

INTERIOR PHOTOGRAPHS

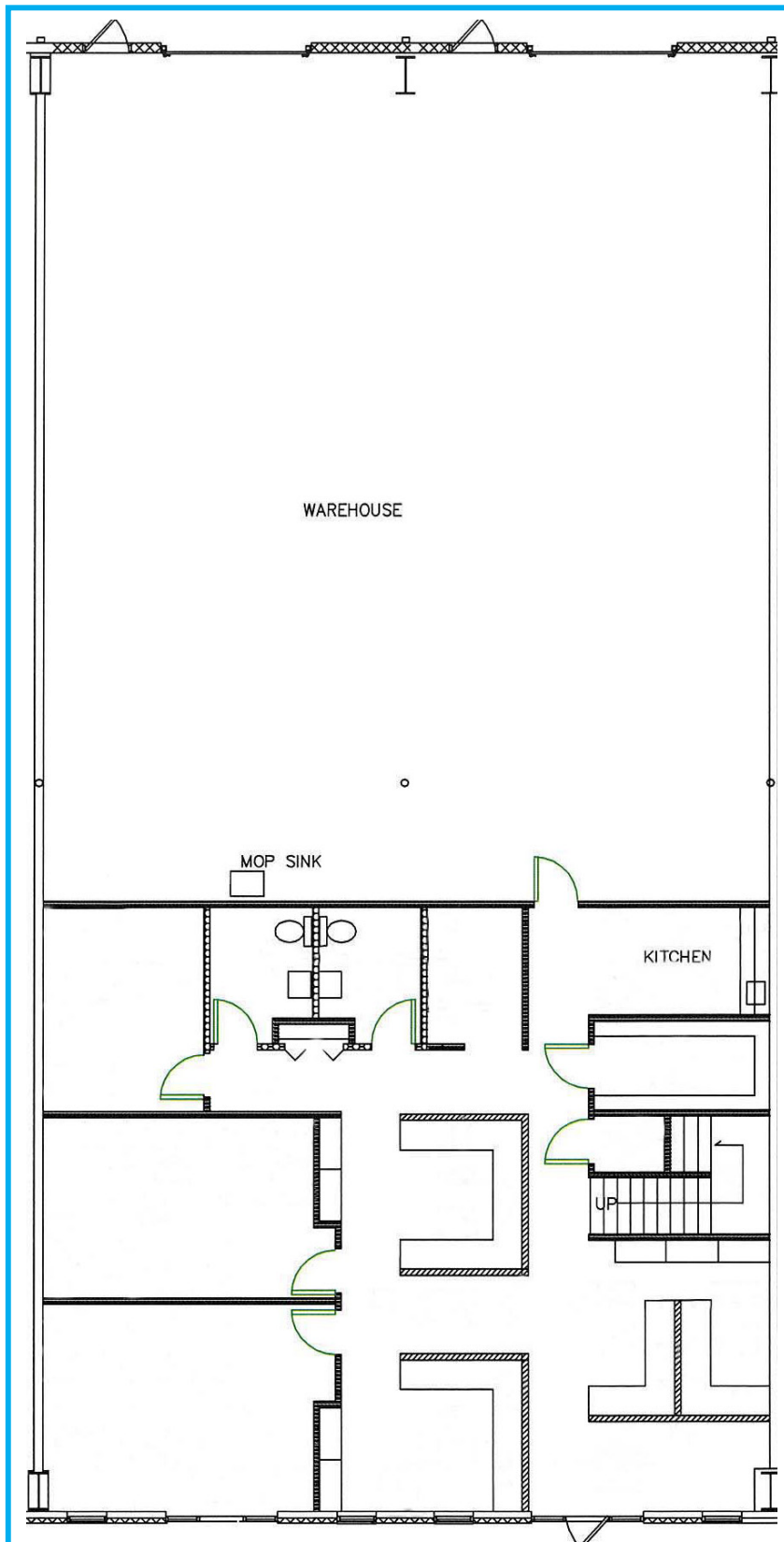


For more information:
BOBBY BEASLEY, III, SIOR
757.640.8241
BobbyBeasley3@harveylindsay.com

999 Waterside Drive • Suite 1400
Norfolk, Virginia 23510
757-640-8700
www.HarveyLindsay.com

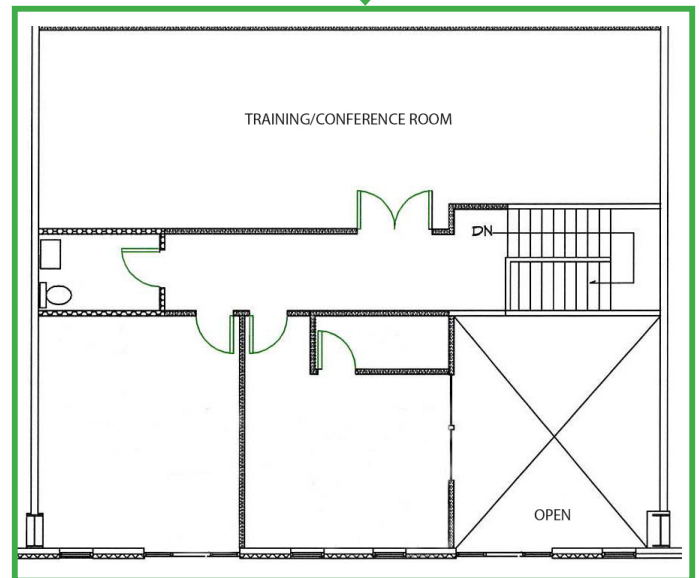
HARVEY LINDSAY
COMMERCIAL REAL ESTATE

The information contained herein has been obtained from sources believed to be reliable but is not warranted.
We cannot be responsible for errors, omissions, withdrawal, or prior lease or sale.



FIRST FLOOR

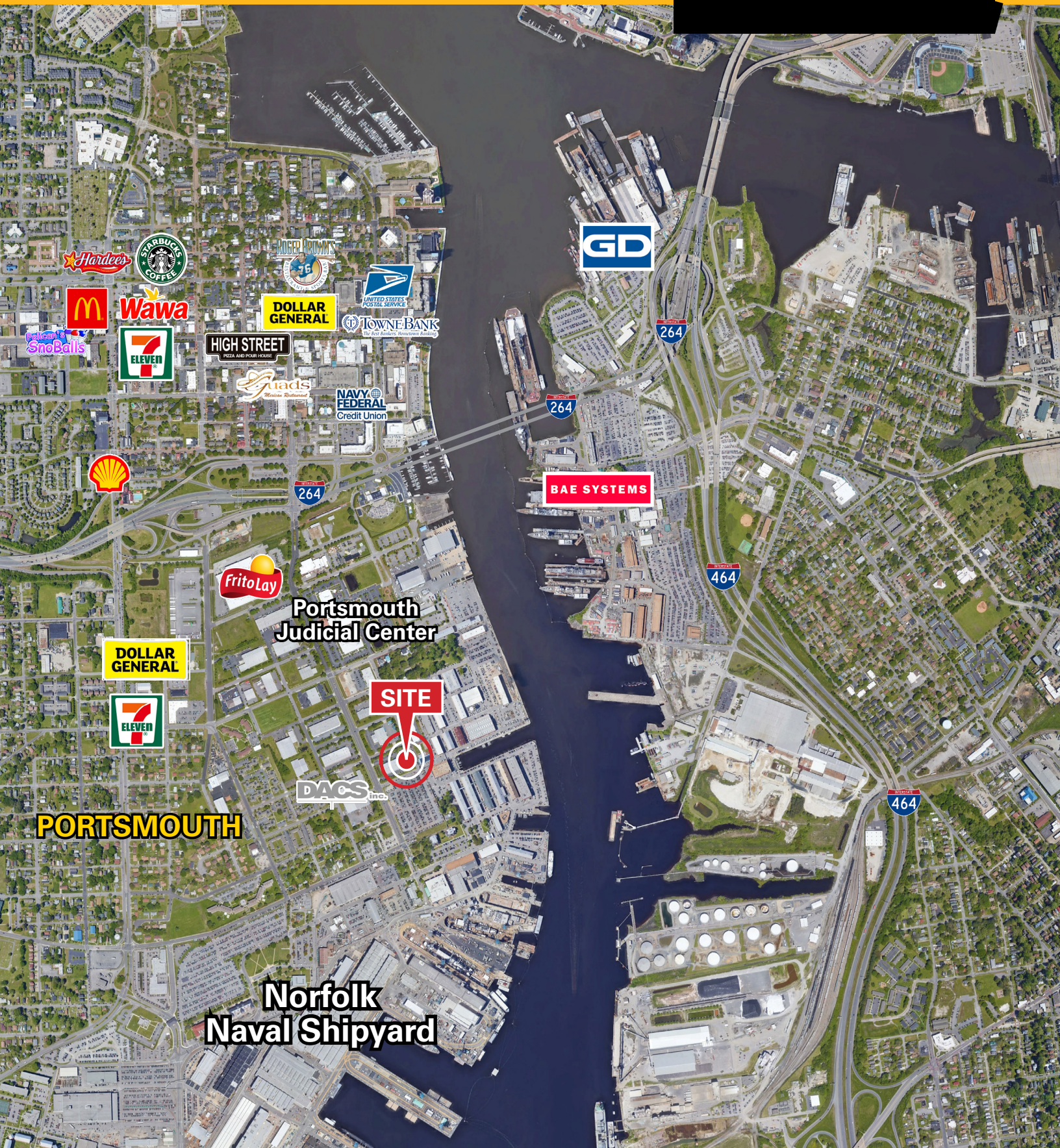
SECOND FLOOR
OFFICE SPACE



* measurements are approximate

901 Port Centre Parkway, Portsmouth, VA

LOCATION AERIAL



For more information:

BOBBY BEASLEY, III, SIOR

757.640.8241

BobbyBeasley3@harveylindsay.com

999 Waterside Drive • Suite 1400

Norfolk, Virginia 23510

757-640-8700

www.HarveyLindsay.com

HARVEY LINDSAY

COMMERCIAL REAL ESTATE

The information contained herein has been obtained from sources believed to be reliable but is not warranted.

We cannot be responsible for errors, omissions, withdrawal, or prior lease or sale.