



DOUGLASDALE BUSINESS PARK

8214, 11500 - 35 STREET SE

FOR LEASE



PROPERTY HIGHLIGHTS

- 1,721 sq. ft. of second floor Office available for lease
- 2 large offices + large open work area
- Utilities included in the operating cost
- 4 assigned parking stalls and on street parking available
- Ideally located with easy access to Deerfoot Trail, Barlow Trail and Stoney Trail
- Developed, owned and managed by Telsec Property Corporation

Lisa Ha
403-203-3882
lisa@telsec.ca

www.Telsec.ca
TELSEC PROPERTY CORPORATION

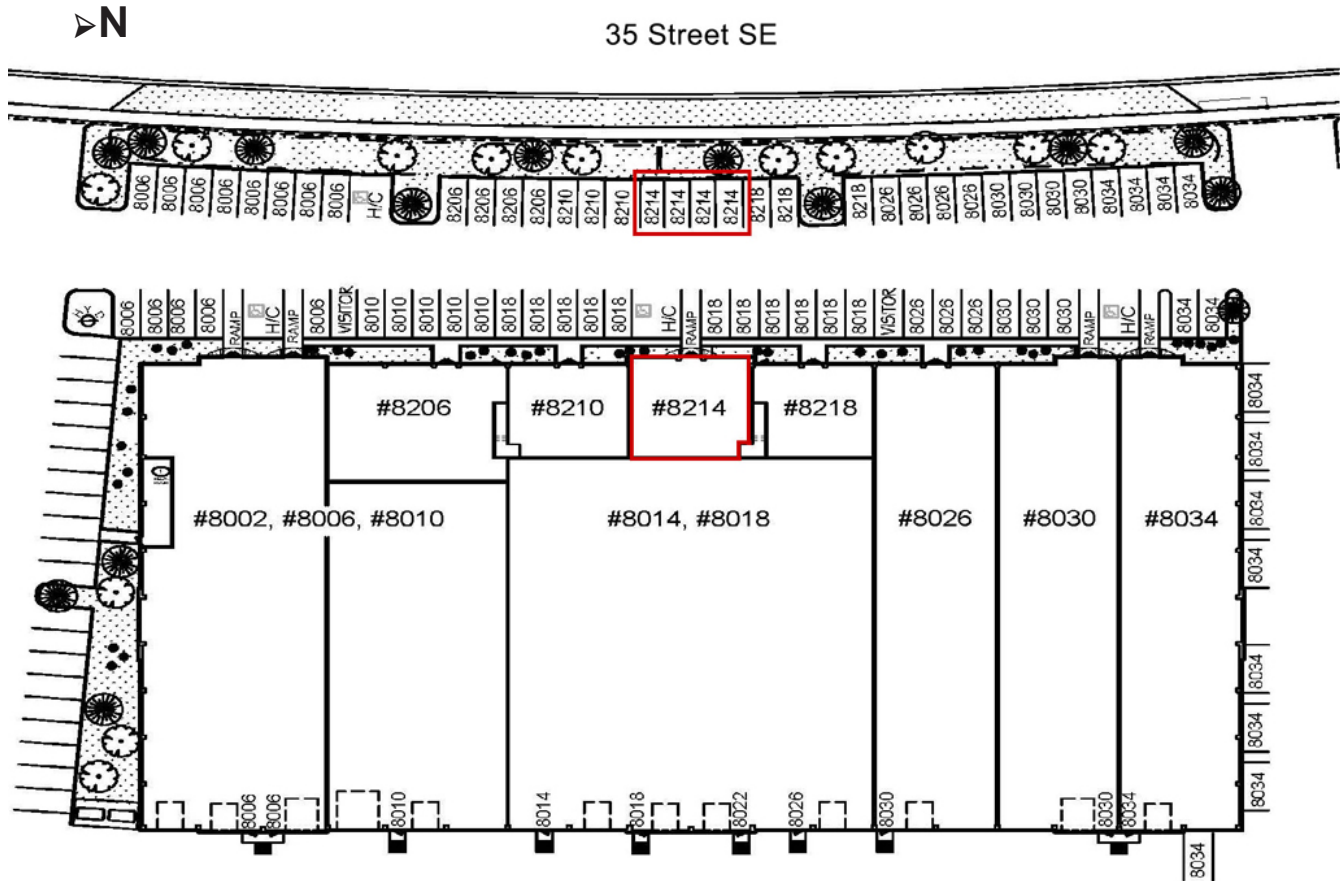




DOUGLASDALE BUSINESS PARK

8214, 11500 - 35 STREET SE

SITE PLAN



AVAILABLE AREA	1,721 sq. ft.
NET MONTHLY RENT	\$2,500.00
OPERATING COSTS & PROPERTY TAX	\$8.93 per sq. ft. (est for 2023)
PARKING	4 assigned (more available on street)

Lisa Ha
403-203-3882
lisa@telsec.ca

www.Telsec.ca
TELSEC PROPERTY CORPORATION

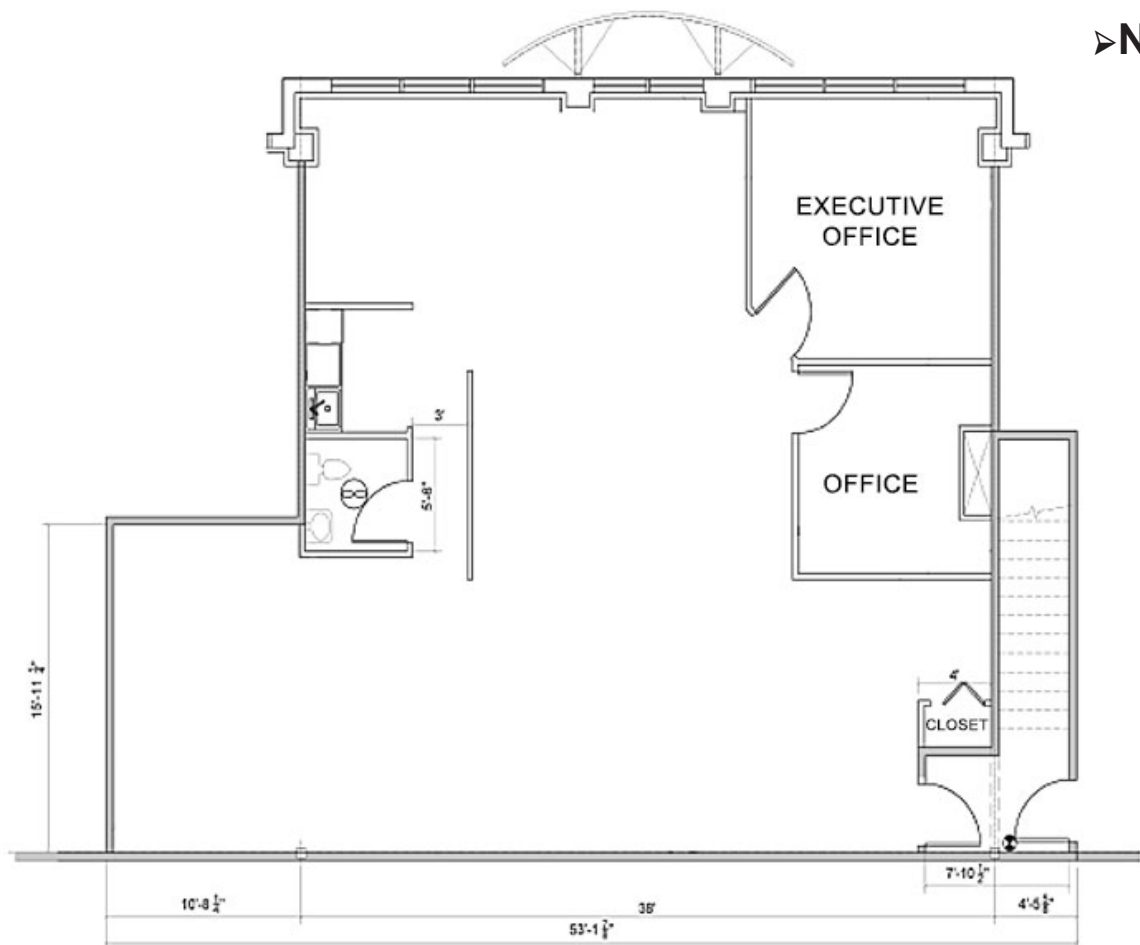




DOUGLASDALE BUSINESS PARK

8214, 11500 - 35 STREET SE

FLOOR PLAN



Lisa Ha
403-203-3882
lisa@telsec.ca

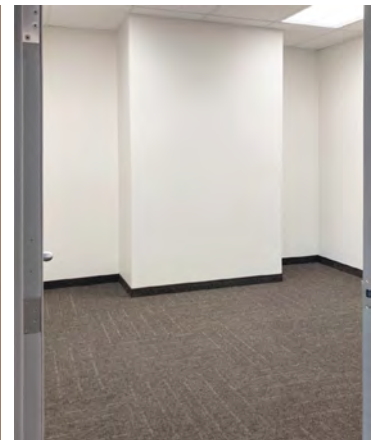
www.Telsec.ca
TELSEC PROPERTY CORPORATION





DOUGLASDALE BUSINESS PARK

8214, 11500 - 35 STREET SE



Lisa Ha
403-203-3882
lisa@telsec.ca

www.Telsec.ca
TELSEC PROPERTY CORPORATION





DOUGLASDALE BUSINESS PARK

8214, 11500 - 35 STREET SE

LOCATION



> VIEW ON GOOGLE MAPS



Lisa Ha
403-203-3882
lisa@telsec.ca

www.Telsec.ca

TELSEC PROPERTY CORPORATION

