

CENTER FOR  
SHOPPING MALL



DOLLAR TREE



shaws

109

21,210 VPD

SITE

MAIN STREET

ConvenientMD  
URGENT CARE

4

ALFRED ROAD

10,100 VPD

109

COUNTRY CLUB ROAD

AVAILABLE

Highly Visible Pad Opportunity

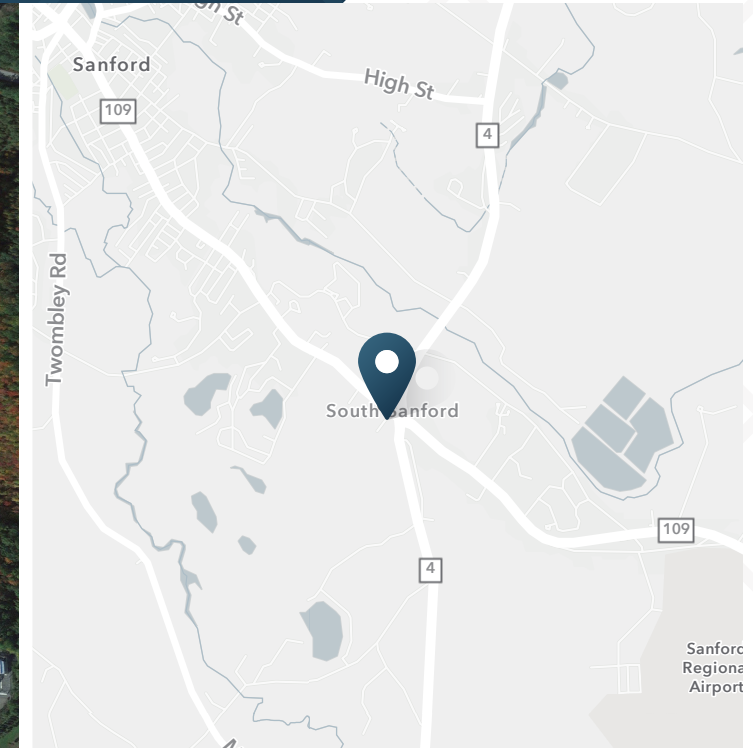
1410 Main Street | Sanford, ME





# Highly Visible Pad Opportunity

1410 Main Street | Sanford, ME



2,200 SF  
Available

5.3 AC  
Lot Size

Contact  
Broker  
Rate

## ABOUT THE PROPERTY

- Highly visible pad opportunity located on busy roundabout.
- Adjacent to a brand new Convenient MD
- Excellent signage opportunity

## NEAR BY RETAILERS

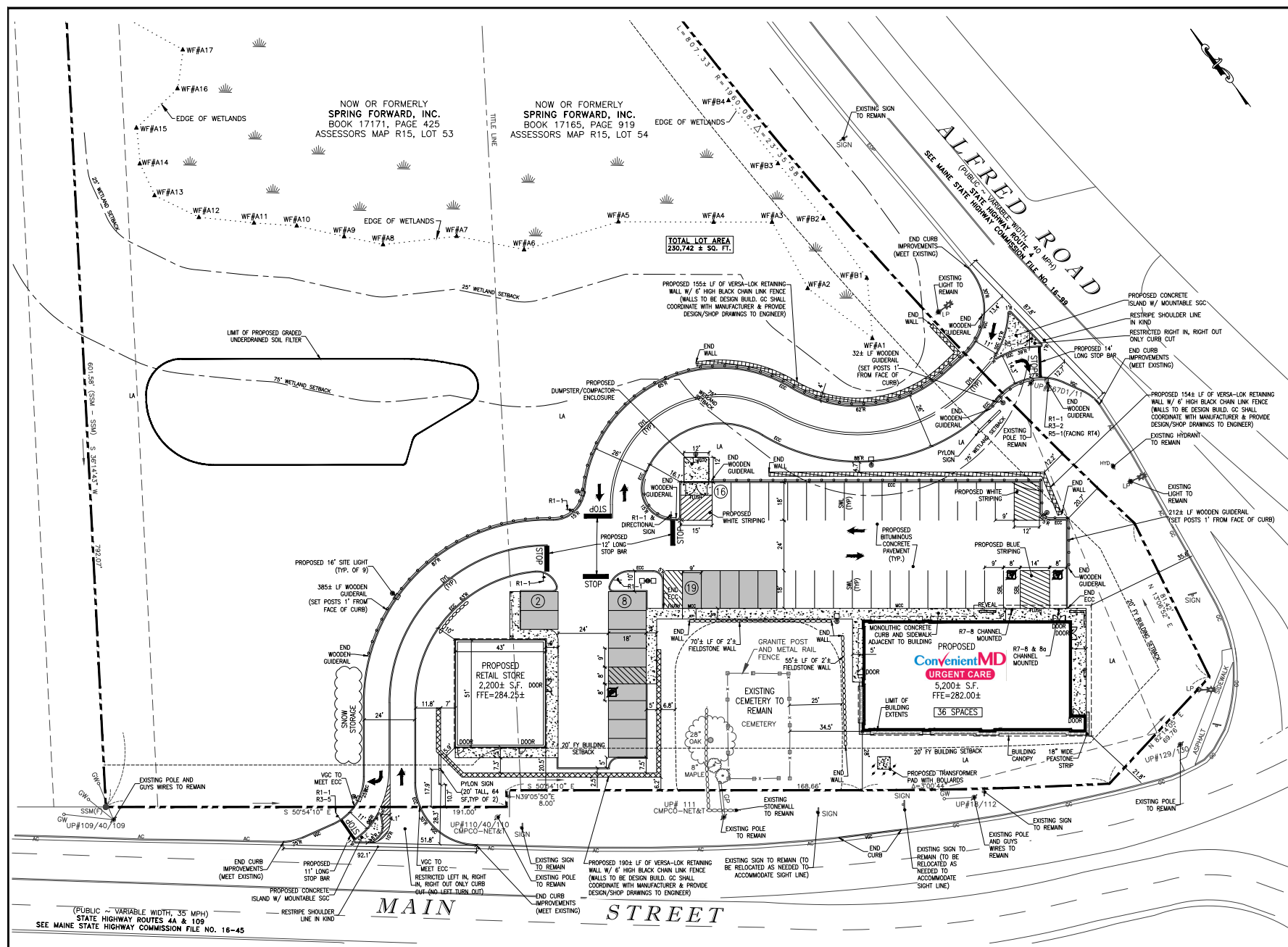


## TRAFFIC COUNTS

Main Street	21,210 VPD
Country Club Road	8,310 VPD
Alfred Road	10,100 VPD

Year: 2020 | Source: ESRI

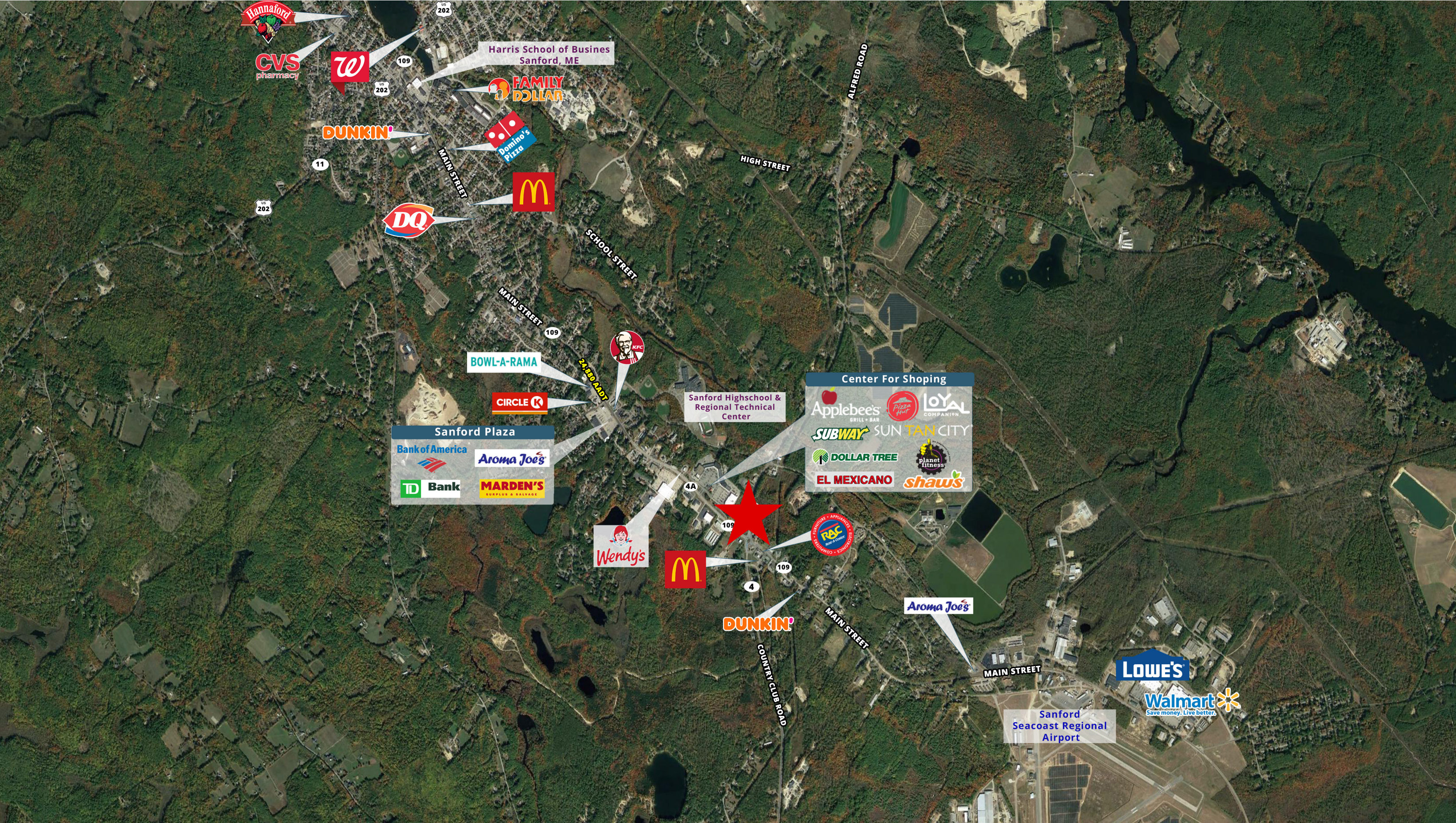
**1410 Main Street | Sanford, ME**





# Highly Visible Pad Opportunity

1410 Main Street | Sanford, ME





# Highly Visible Pad Opportunity

1410 Main Street | Sanford, ME



## DEMOGRAPHIC HIGHLIGHTS

### Population

	3 miles	5 miles	7 miles
2025 Estimated Population	15,332	25,737	35,889
2030 Projected Population	15,543	26,163	36,708
Proj. Annual Growth 2025 to 2030	0.27%	0.33%	0.45%

### Daytime Population

2025 Daytime Population	16,431	24,377	30,633
Workers	9,339	12,187	13,950
Residents	7,092	12,190	16,683

### Income

2025 Est. Average Household Income	\$90,880	\$93,784	\$102,878
2025 Est. Median Household Income	\$76,243	\$78,748	\$86,861

### Households & Growth

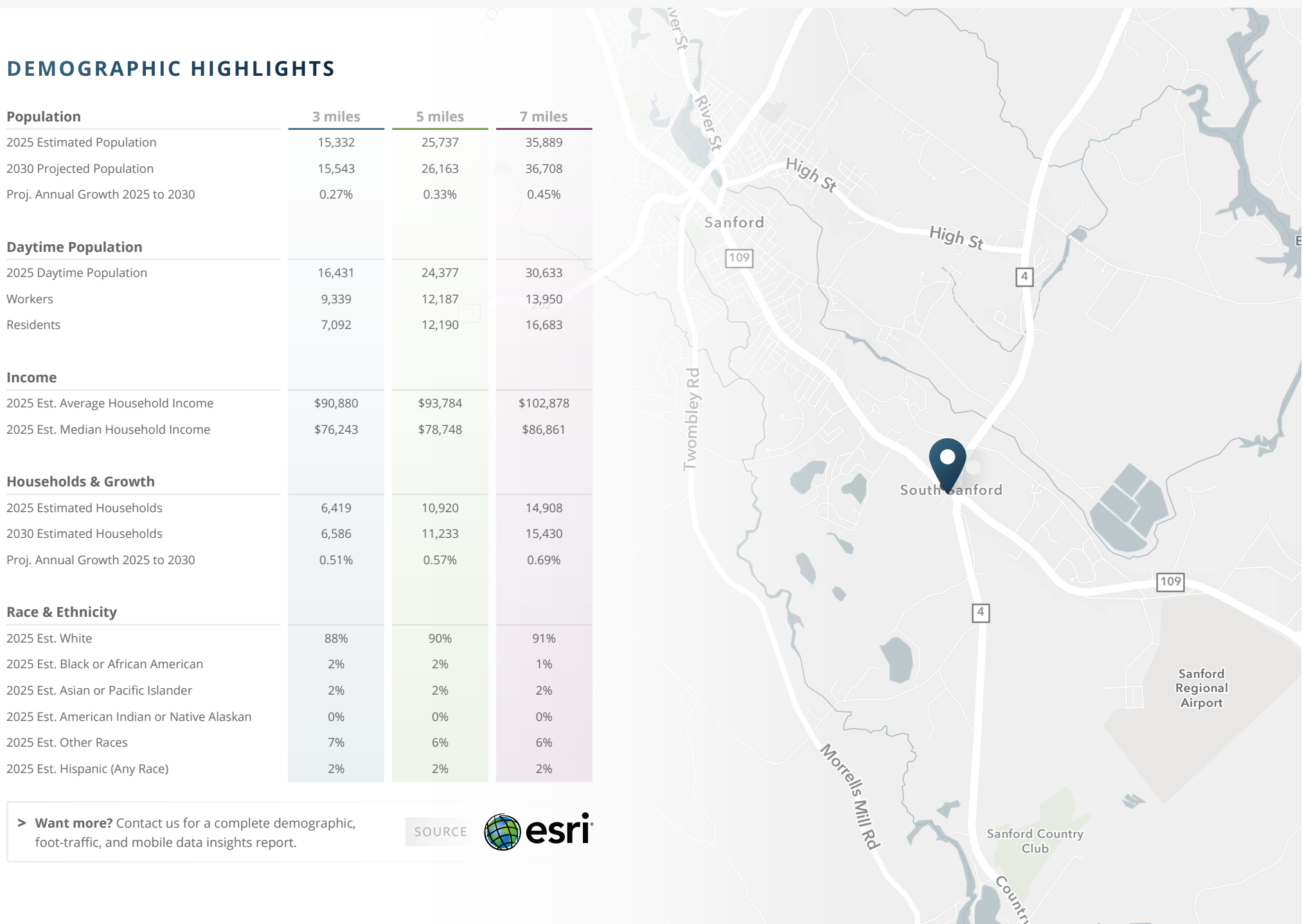
2025 Estimated Households	6,419	10,920	14,908
2030 Estimated Households	6,586	11,233	15,430
Proj. Annual Growth 2025 to 2030	0.51%	0.57%	0.69%

### Race & Ethnicity

2025 Est. White	88%	90%	91%
2025 Est. Black or African American	2%	2%	1%
2025 Est. Asian or Pacific Islander	2%	2%	2%
2025 Est. American Indian or Native Alaskan	0%	0%	0%
2025 Est. Other Races	7%	6%	6%
2025 Est. Hispanic (Any Race)	2%	2%	2%

> **Want more?** Contact us for a complete demographic, foot-traffic, and mobile data insights report.

SOURCE 







**SRS Boston**  
400 Fifth Avenue, Suite 105  
Waltham, MA 02451  
857.263.3839

**Bryan Wright**  
617.245.0671  
Bryan.Wright@srsre.com

Chris Janelle  
617.872.1115  
Chris.Janelle@srsre.com

**Jonathan Lapat**  
Broker of Record

**SRSRE.COM**

© SRS

The information presented was obtained from sources deemed reliable;  
however SRS does not guarantee its completeness or accuracy.