

2321 OPAL ST

LOS ANGELES, CA 90023

*±17,870 SF Fully Fenced & Secured
Concrete Lot with Controlled Access*

\$15,750 per month lease rate or \$ 0.88 PSF Gross

Term 2 years or submit

Total space available 17,870 SF of land

Small trucks, vans, cars or contractor's yard allowed

Excellent access to the 101, 60, 10, and 5 Freeways

Brand new 18' wide gate with padlock system

Asphalt 400 tons of 1/2 inch with 4.5' thickness

Base 500 tons of crushed concrete rock base

Grading soil down to 3 feet with over 95% compaction

Utilities not available

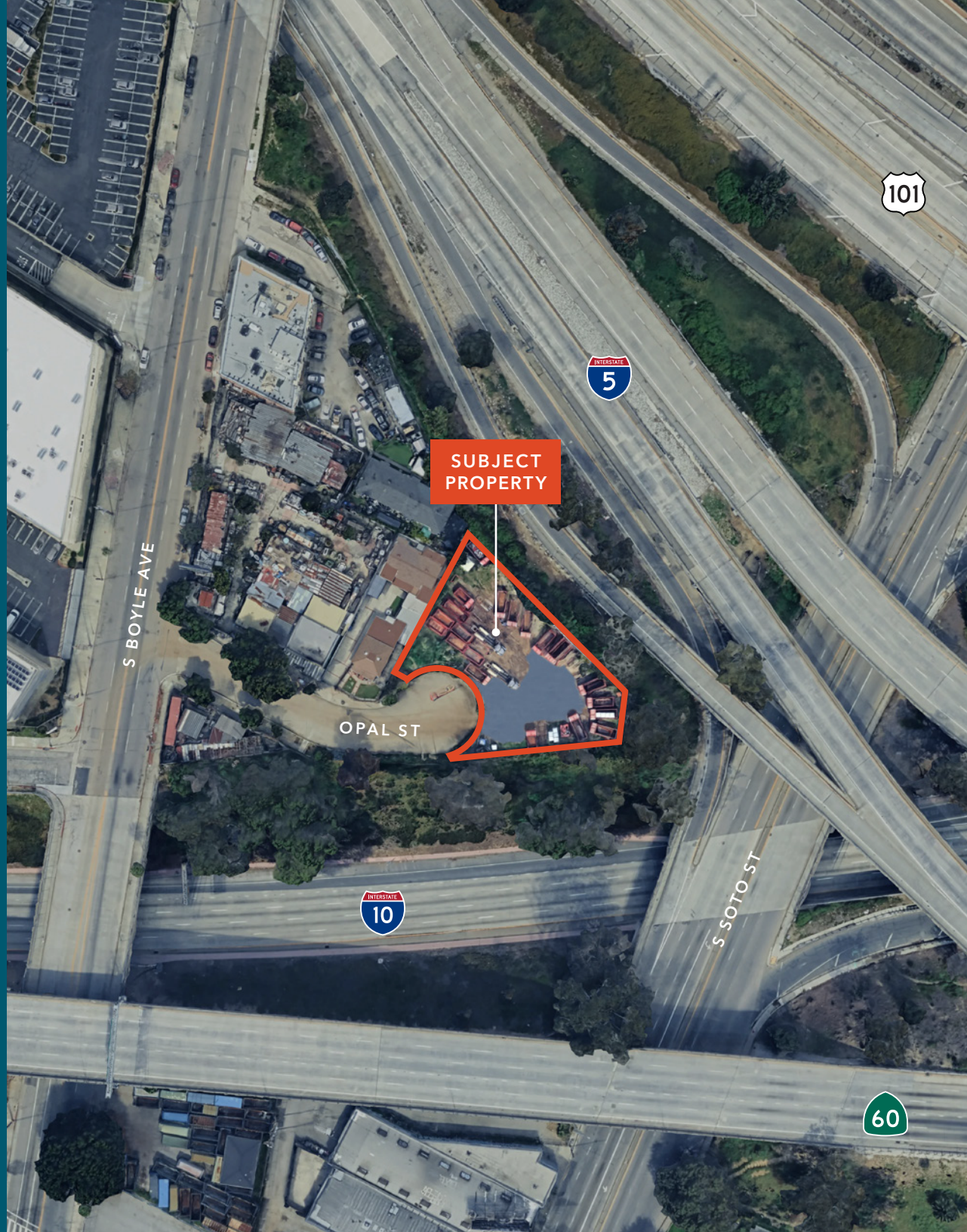
\$15,750

LEASE RATE (SF/MO)

8/1/2025

AVAILABLE

KIDDER.COM













2321 OPAL ST

Exclusively leased by

NICK ARNST

213.225.7226

nick.arnst@kidder.com

LIC N° 01927768

TOM WILLIAMS

213.225.7229

tom.williams@kidder.com

LIC N° 01270201

KIDDER.COM

This information supplied herein is from sources we deem reliable. It is provided without any representation, warranty, or guarantee, expressed or implied as to its accuracy. Prospective Buyer or Tenant should conduct an independent investigation and verification of all matters deemed to be material, including, but not limited to, statements of income and expenses. Consult your attorney, accountant, or other professional advisor. All Kidder Mathews designs are the sole property of Kidder Mathews. Branded materials and layouts are not authorized for use by any other firm or person.

