

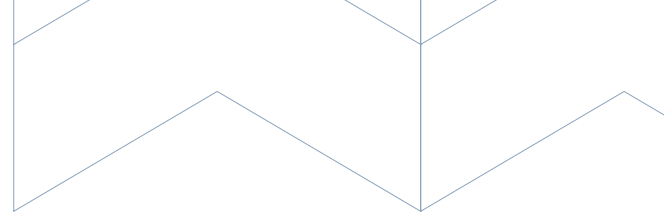


Main Floor - 86 Wheatfield Road, RM of Rosser, Manitoba

# Turnkey Office Available in CentrePort Canada

For Lease





## Property Details

**+/- 2,894 sq. ft.**

MAIN FLOOR/SECOND FLOOR OFFICE SIZE

**\$9.95/sq. ft.**

NET LEASE RATE

**\$4.52/sq. ft.**

CAM & TAX (EST. 2024)

**Immediate**

AVAILABILITY

## Features

- Turnkey main/second floor office space includes private offices, boardroom, kitchen and washrooms
- Located within CentrePort Canada, a major inland port and distribution hub
- Well-situated in the Brookside Business Park with easy access to major transportation routes including Brookside Boulevard, which leads directly to the Winnipeg James Armstrong Richardson International Airport
- Ample on-site parking available



## Highlights



**High Quality**

INDUSTRIAL BUILDING IN  
STONY MOUNTAIN



**Great Access**

TO MAJOR TRANSPORTATION  
ROUTES



**Ideally**

SUITED FOR INDUSTRIAL  
OFFICE/FLEX





**For Lease**

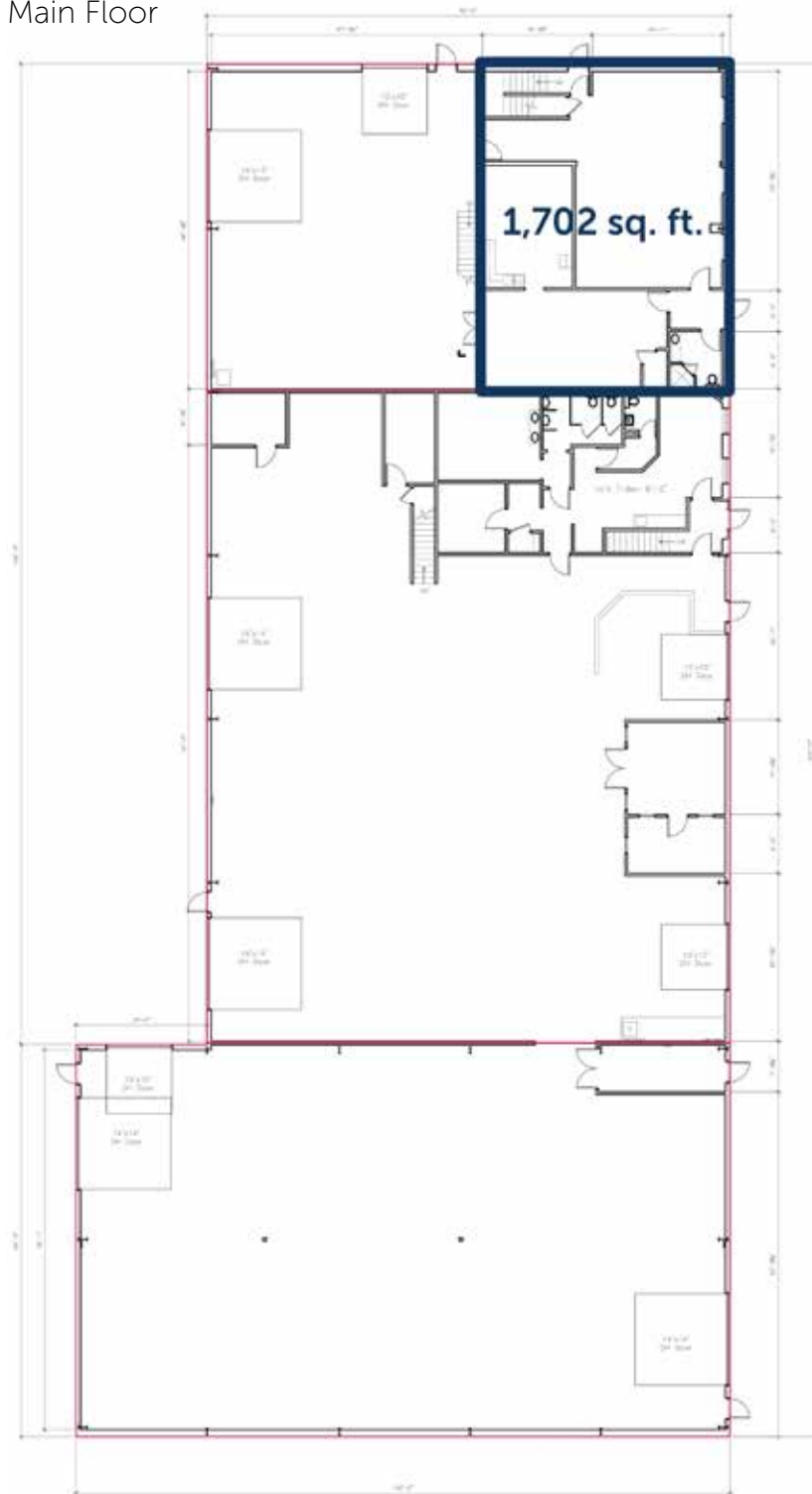


86 Wheatfield Road, RM of Rosser, Manitoba  
[iciproperties.com](http://iciproperties.com)

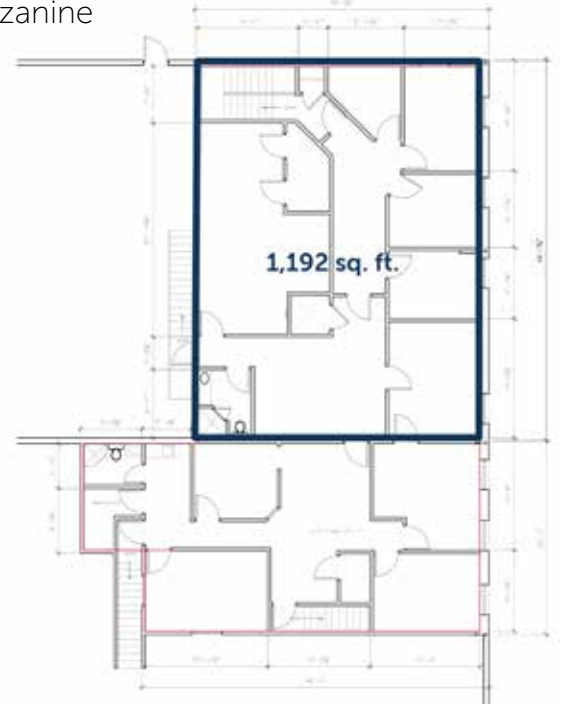


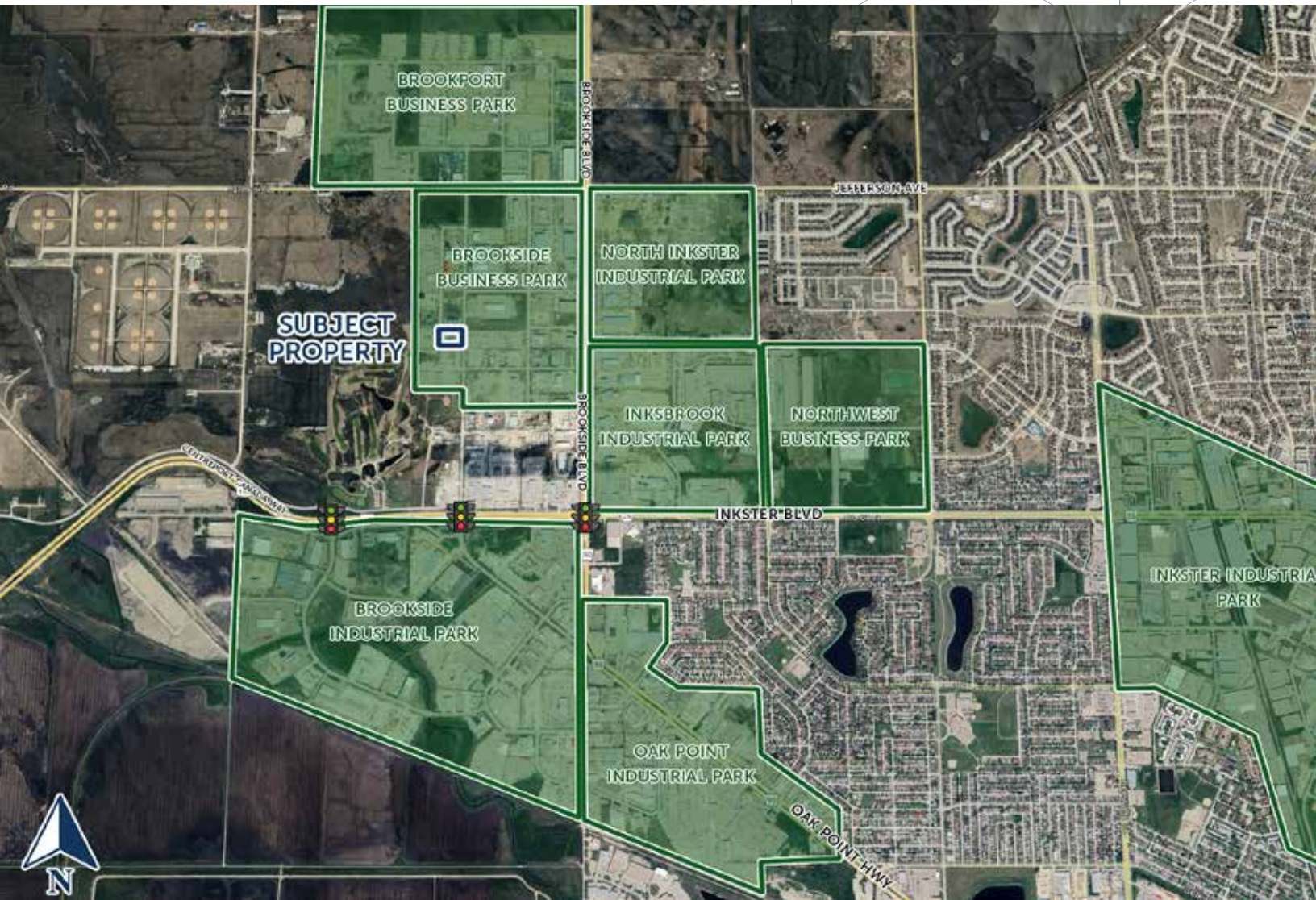
# Floor Plan

Main Floor



Mezzanine





# Connect with us today!

[iciproperties.com](https://www.iciproperties.com)

**Tyson Preisentanz\***

SENIOR VICE PRESIDENT

[tpresentanz@iciproperties.com](mailto:tpresentanz@iciproperties.com)

204-782-6183

**Jared Kushner\***

VICE PRESIDENT

[jkushner@iciproperties.com](mailto:jkushner@iciproperties.com)

204-294-1087

**DISCLAIMER** Information herein has been obtained from sources deemed reliable; however, neither the Vendor/Landlord nor ICI Properties guarantees, warrants, or represents, expressly or impliedly, its completeness or accuracy. Projections, opinions, assumptions, or estimates, if any, are provided as examples only and may differ materially from actual results. Purchasers and tenants are responsible for conducting their own due diligence. The property may be withdrawn without notice. Neither the Vendor/Landlord nor ICI Properties assumes liability for any loss or damage arising from reliance on this information. If the recipient has executed a confidentiality agreement related to this matter, such information is subject to its terms. ©2025 ICI Properties. All rights reserved.

*\*Services provided by 2023 Tyson Preisentanz Personal Real Estate Corporation*

*\*Services provided by Jared Kushner Personal Real Estate Corporation*

**For Lease**



Main Floor - 86 Wheatfield Road, RM of Rosser, Manitoba  
[iciproperties.com](https://www.iciproperties.com)