

3rd & Garey

DOWNTOWN ARTS DISTRICT

NEWMARK
PACIFIC

In the heart of the Arts District

Positioned at the busy corner of 3rd & Garey, the project is surrounded by standout Arts District restaurant operators including **Loqui**, **Alfred Coffee**, **Wurstküche**, **Kreation Juicery** and retail neighbors including **Le Labo**, **Simon Miller**, **Departamento**, and **Hauser & Wirth**. The neighborhood continues to attract a strong mix of food, fashion, and lifestyle brands.



821 E 3rd Street

FLAGSHIP RETAIL OPPORTUNITY

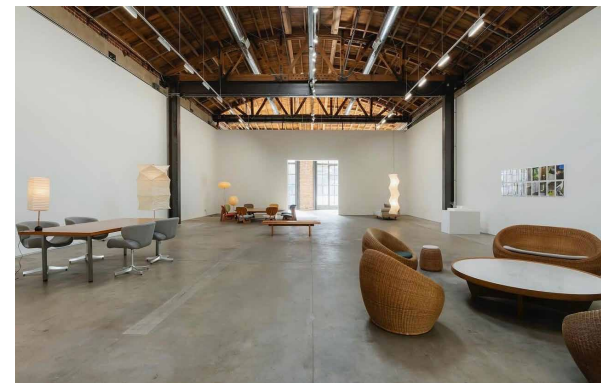
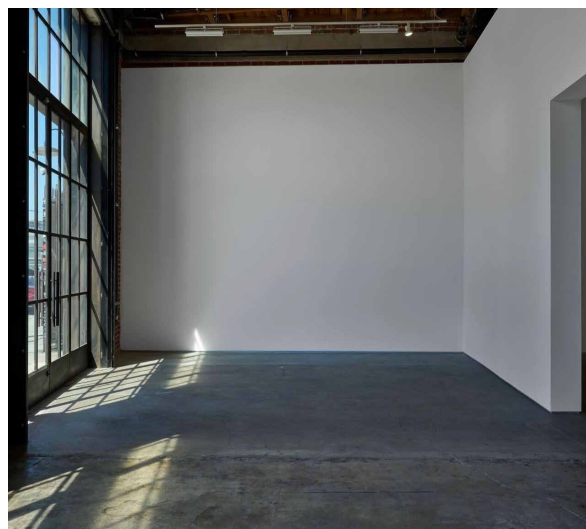
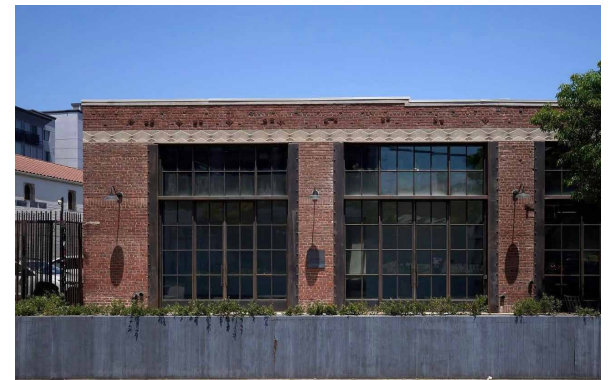
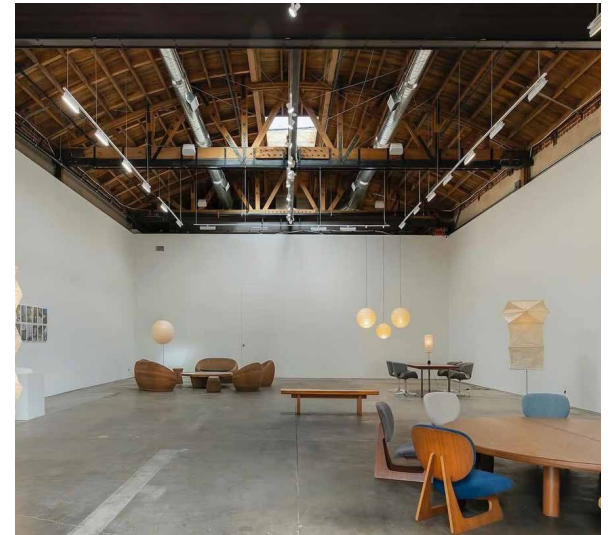
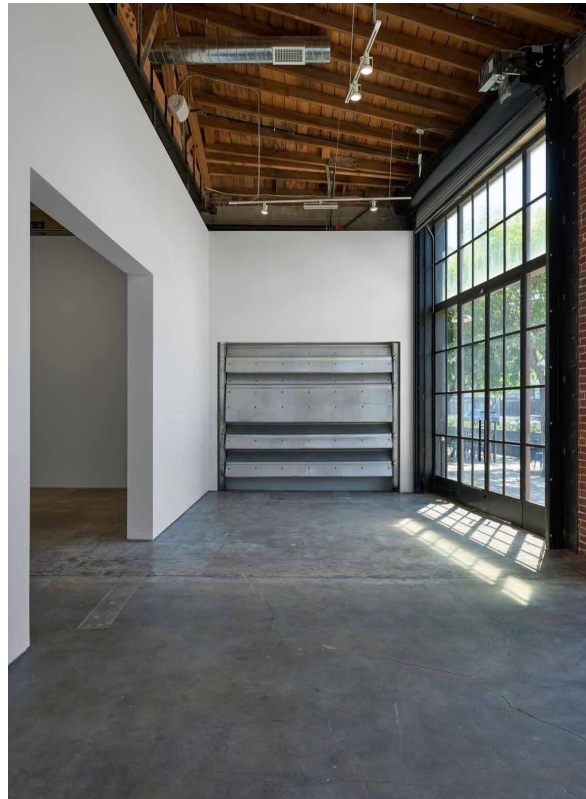
Approx. 4,000 SF | 400 AMPS

Original brick & wooden truss

16'5" - 23'4" foot ceilings

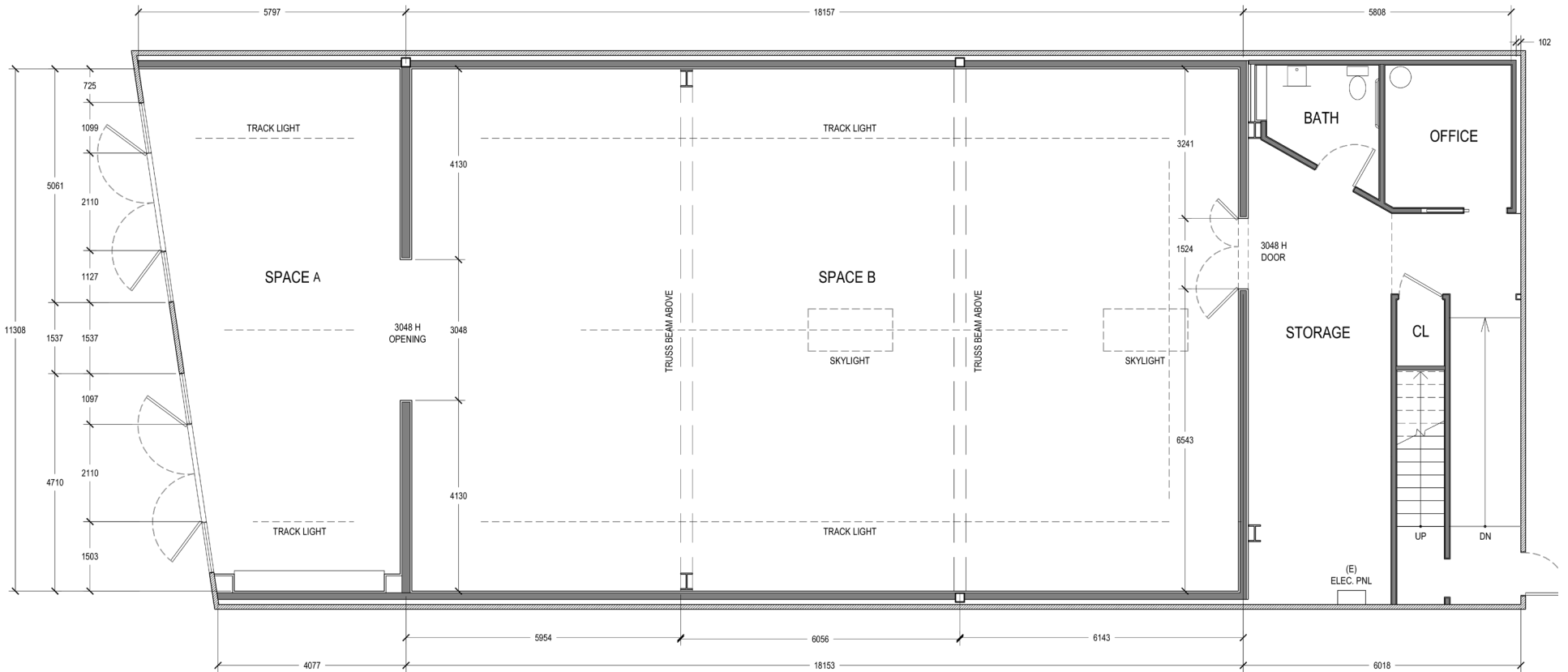
Polished concrete floors with gallery-quality white walls

Flexible layout suitable for retail, showroom, gallery, or experiential use



821 E 3rd Street — Floor Plan

Approx. 4,000 SF



825 E 3rd Street

FLAGSHIP RETAIL OR
RESTAURANT OPPORTUNITY

Approx. 3,200 SF | 400 AMPS

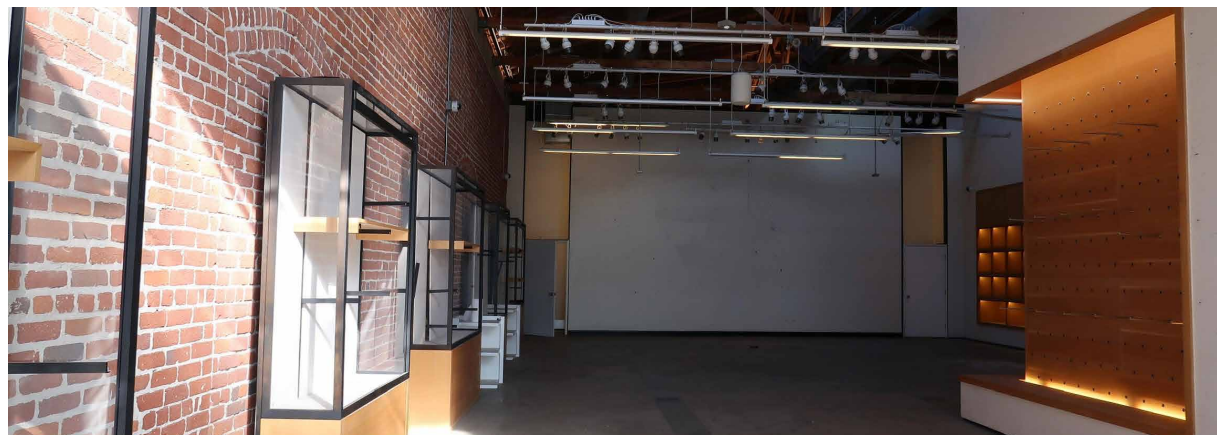
Original brick & wooden truss

16'5" - 23'4" foot ceilings

Permitted for F&B use with existing grease interceptor

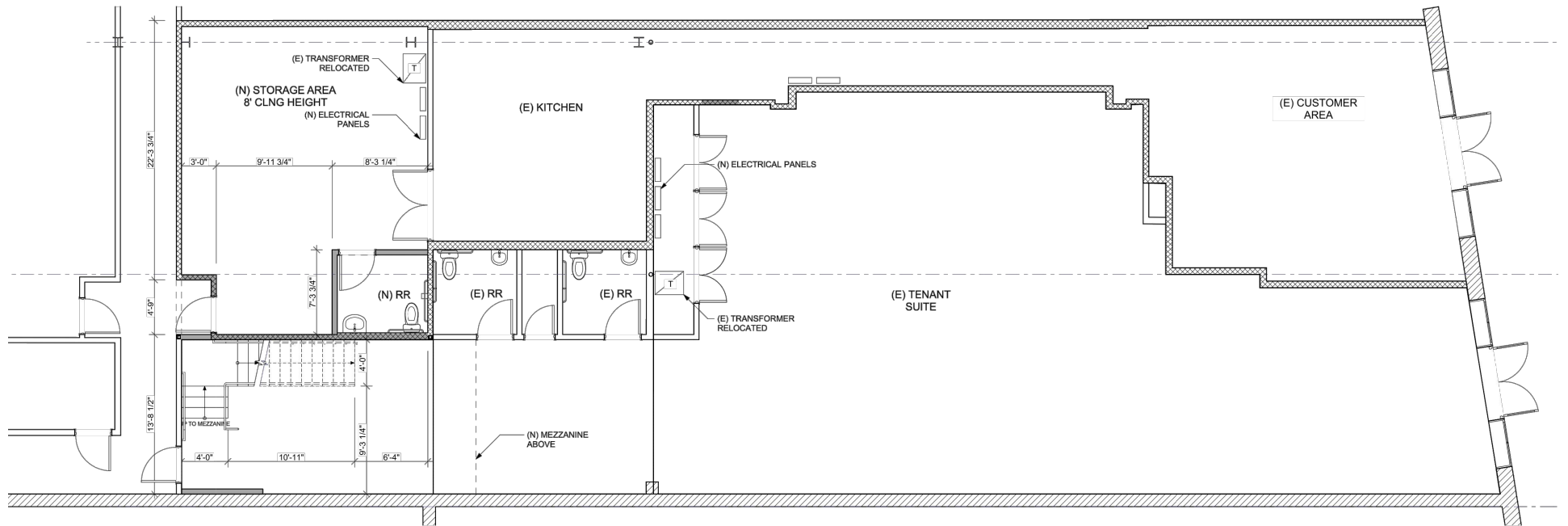
Ambient lighting & several skylights

Plug & play fixtures



825 E 3rd Street — Floor Plan

Approx. 3,200 SF



831 E 3rd Street

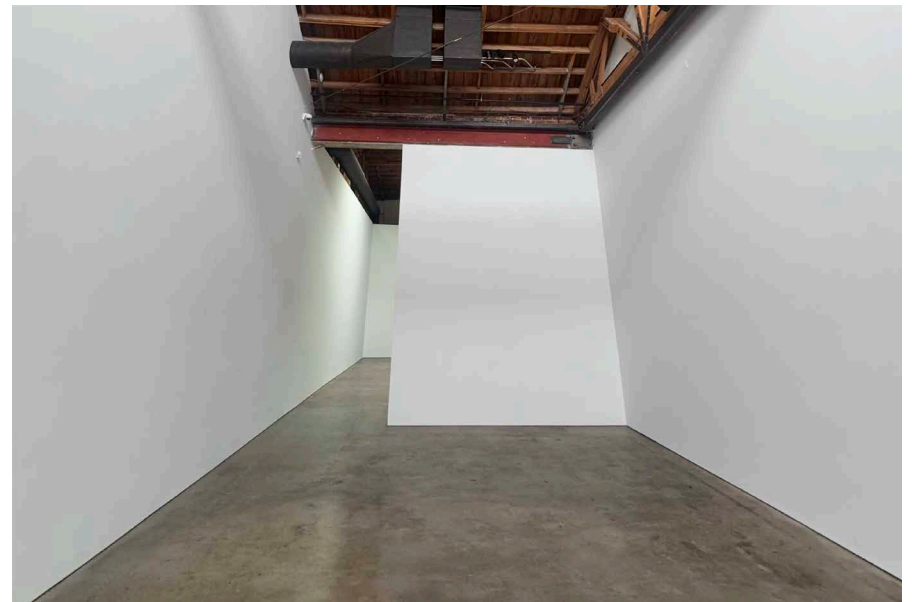
FLAGSHIP RETAIL OR
RESTAURANT OPPORTUNITY

Approx. 2,100 SF | 200 AMPS, 277/480 Volt

Original brick & wooden truss

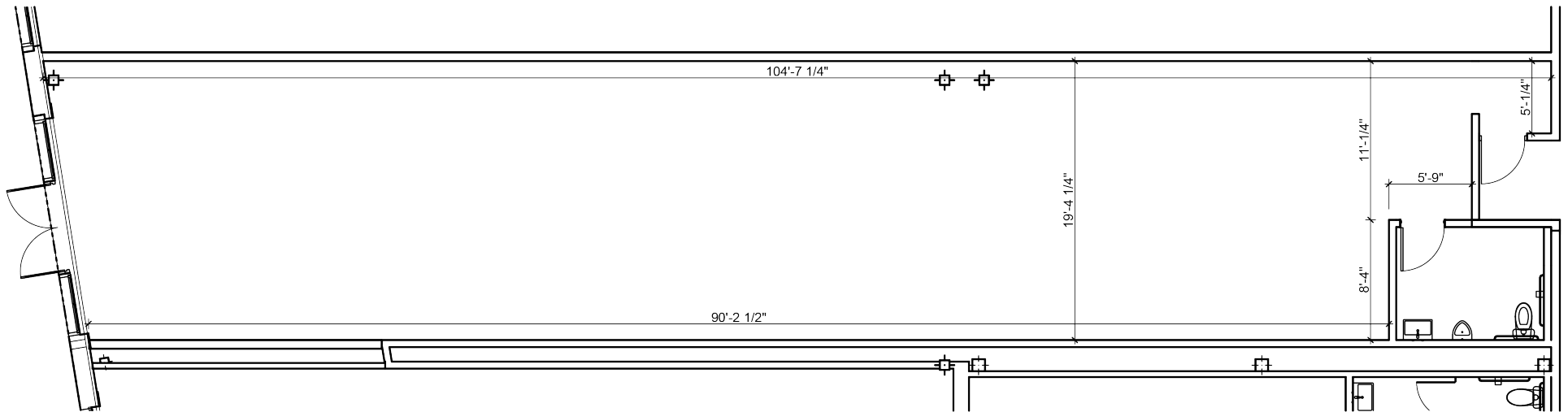
16'5" - 23'4" ceiling heights

Polished concrete floors with gallery-quality white walls



831 E 3rd Street — Floor Plan

Approx. 2,100 SF



835 E 3rd Street

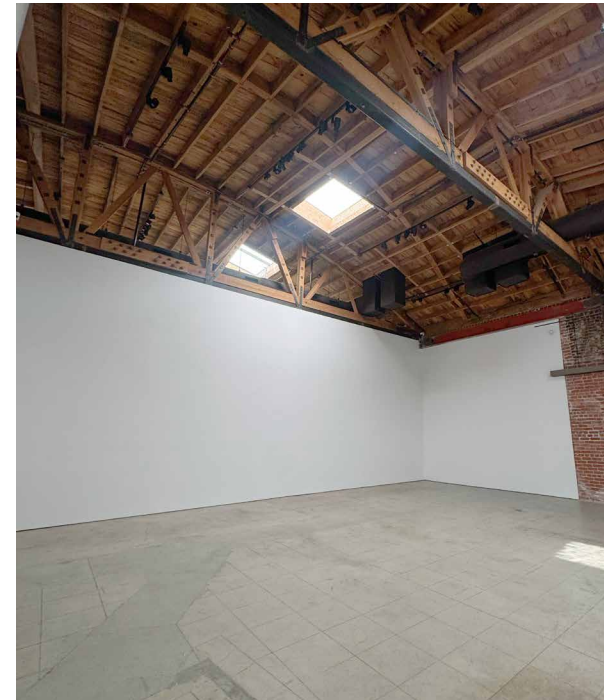
FLAGSHIP RETAIL OPPORTUNITY

Approx. 4,100 SF | 400 AMPS

Original brick, wooden truss, and custom industrial pivot door

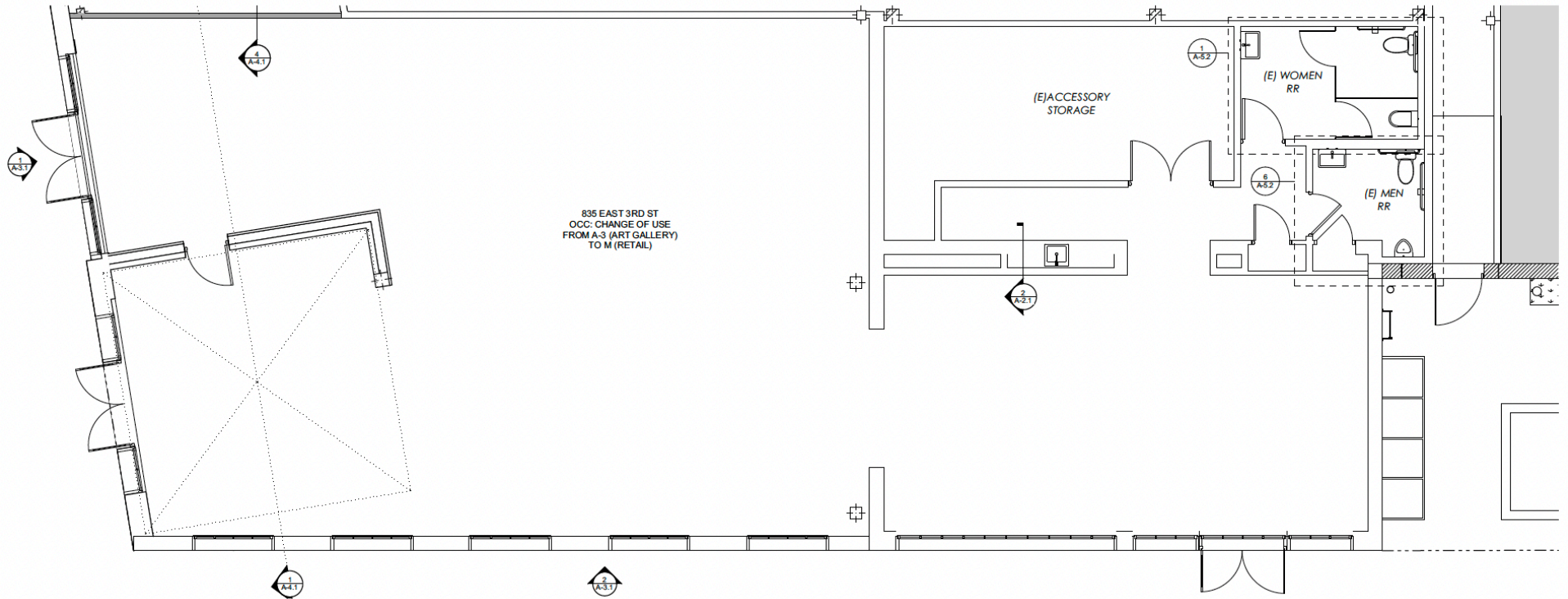
16'5" - 23'4" ceiling heights

Highly visible corner opportunity with four points of entry



835 E 3rd Street — Floor Plan

Approx. 4,100 SF



221-223 S Garey Street

FLAGSHIP RETAIL OR
RESTAURANT OPPORTUNITY

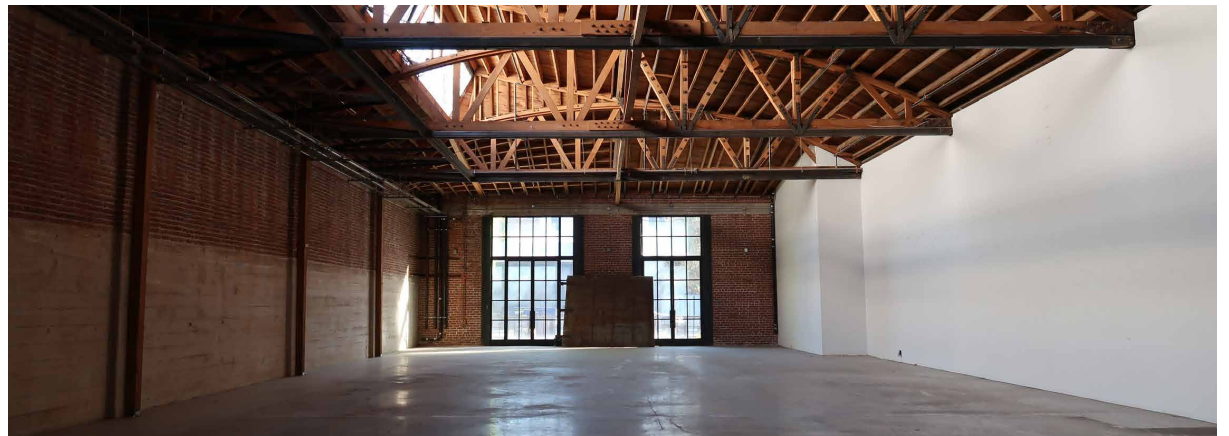
Approx. 4,500 SF + 800 SF Patio
400 AMPS

Original brick & wooden truss

16'5" - 23'4" foot ceilings

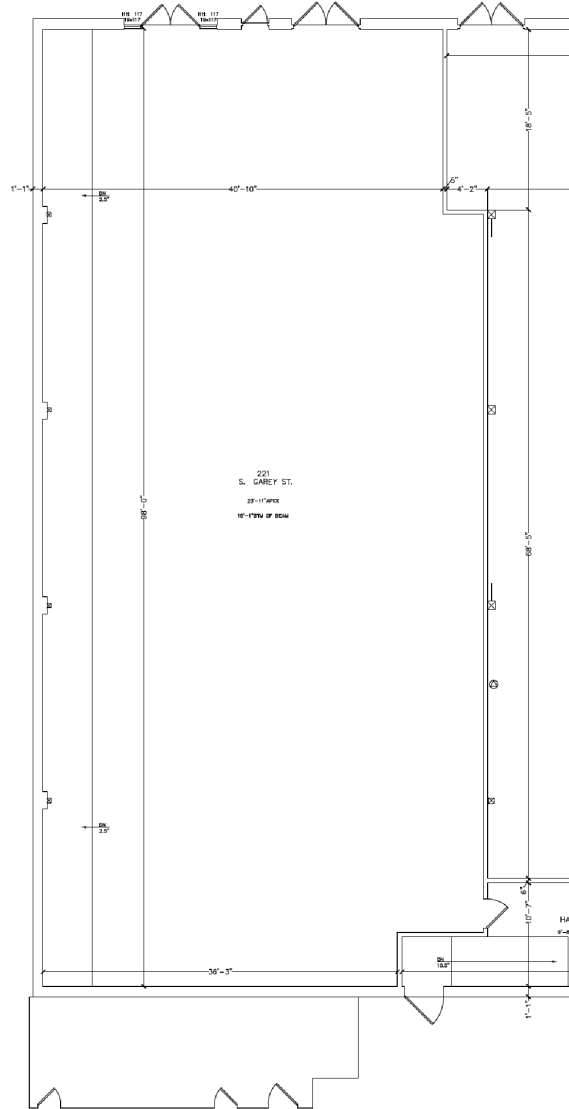
Dramatic eastern facing skylights

Permitted for F&B use with existing grease interceptor



221-223 S Garey Street — Floor Plan

Approx. 4,500 SF + 800 SF Patio



225 S Garey Street

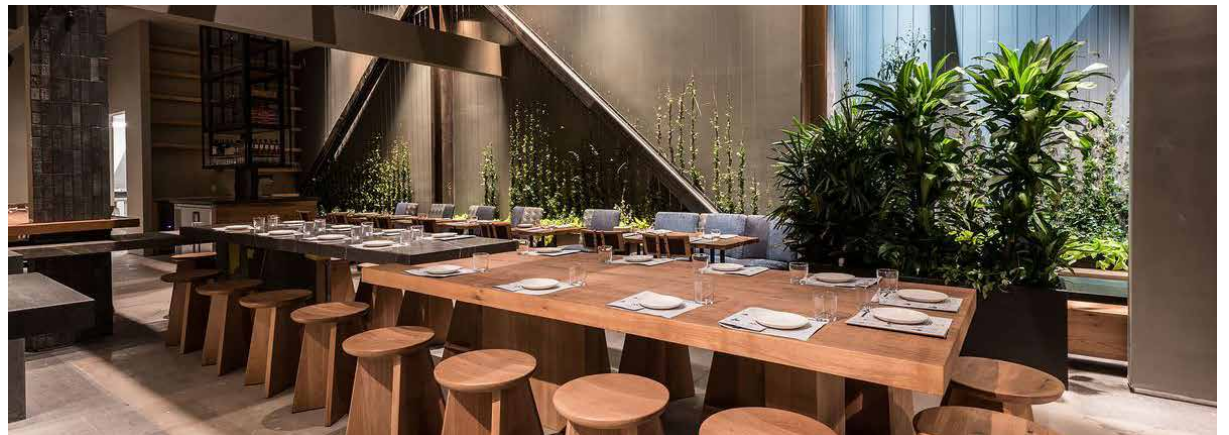
TURNKEY FLAGSHIP RETAIL OR
RESTAURANT OPPORTUNITY

Approx. 4,500 SF + 800 SF Patio
400 AMPS

Original brick & wooden truss

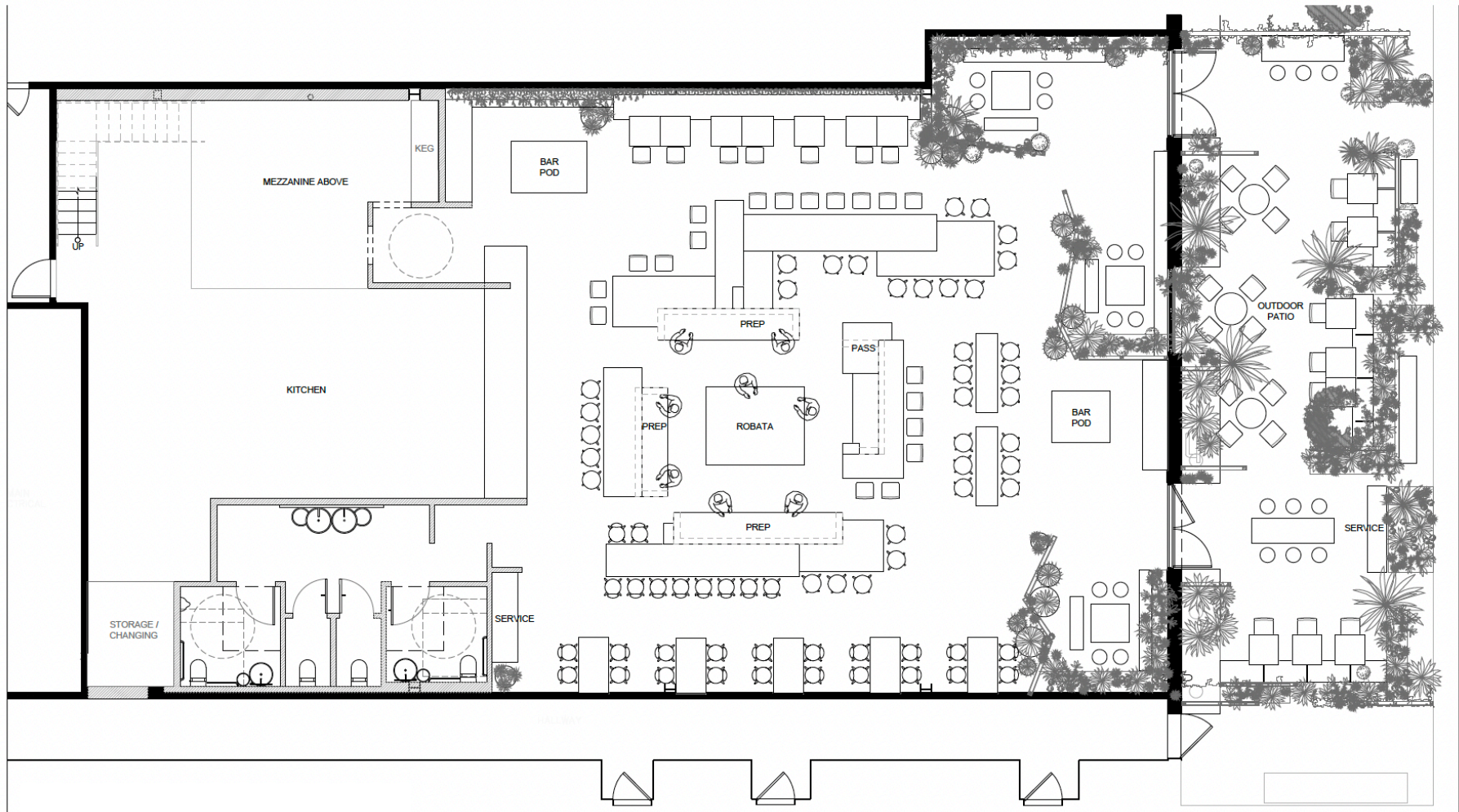
16'5" - 23'4" foot ceilings

Fully equipped 2nd-generation kitchen with
Type 1 hood



225 S Garey Street — Floor Plan

Approx. 4,500 SF + 800 SF Patio



The Arts District

DOWNTOWN LOS ANGELES

Home to a growing community of creatives, forward-thinking brands, and innovative restaurants, the Arts District is where culture and commerce intersect. This walkable, design-forward pocket of DTLA features a mix of converted industrial spaces and modern developments, attracting a steady stream of residents, workers, and visitors alike.

Demographics

WITHIN 1-MILE

±51k Population

±91k Daytime Population

±81k Daytime Population

±22k Employees

±5.9k Businesses

±75% Employees

±35% Businesses



1.50MM
OFFICE SF
Class-A

The Row
4th & Traction
520 Mateo
500 S. Santa Fe

315K SF
131K SF
105K SF
96K SF

3.75K
UNITS
Residential

One Santa Fe
One Santa Fe
Amp Lofts
Ava Arts District

438 Units
472 Units
320 Units
475 Units



3rd & Garey

DOWNTOWN ARTS DISTRICT

NEWMARK
PACIFIC

Andrew Turf

Vice Chairman

t 424-299-7395

andrew.turf@nmrk.com

CA RE Lic. #02003722

Aubrey Hinkson

Associate

t 480-242-4139

aubrey.hinkson@nmrk.com

CA RE Lic. #02221074

Jonathan Schley

Vice Chairman

t 212-222-5566

jonathan.schley@nmrk.com

CA RE Lic. #01470490

Aubrie Pettersen

Brokerage Services Specialist

t 602-540-0426

aubrie.pettersen@nmrk.com

CA RE Lic. #02054331

Corporate License #01355491

The information contained herein has been obtained from sources deemed reliable but has not been verified and no guarantee, warranty or representation, either express or implied, is made with respect to such information. Terms of sale or lease and availability are subject to change or withdrawal without notice.