

INDUSTRIAL / LAND DEVELOPMENT
1.455 ACRES OF COMMERCIAL LAND (W-2)

FOR SALE



7550 W B&A ROAD
GLEN BURNIE, MD

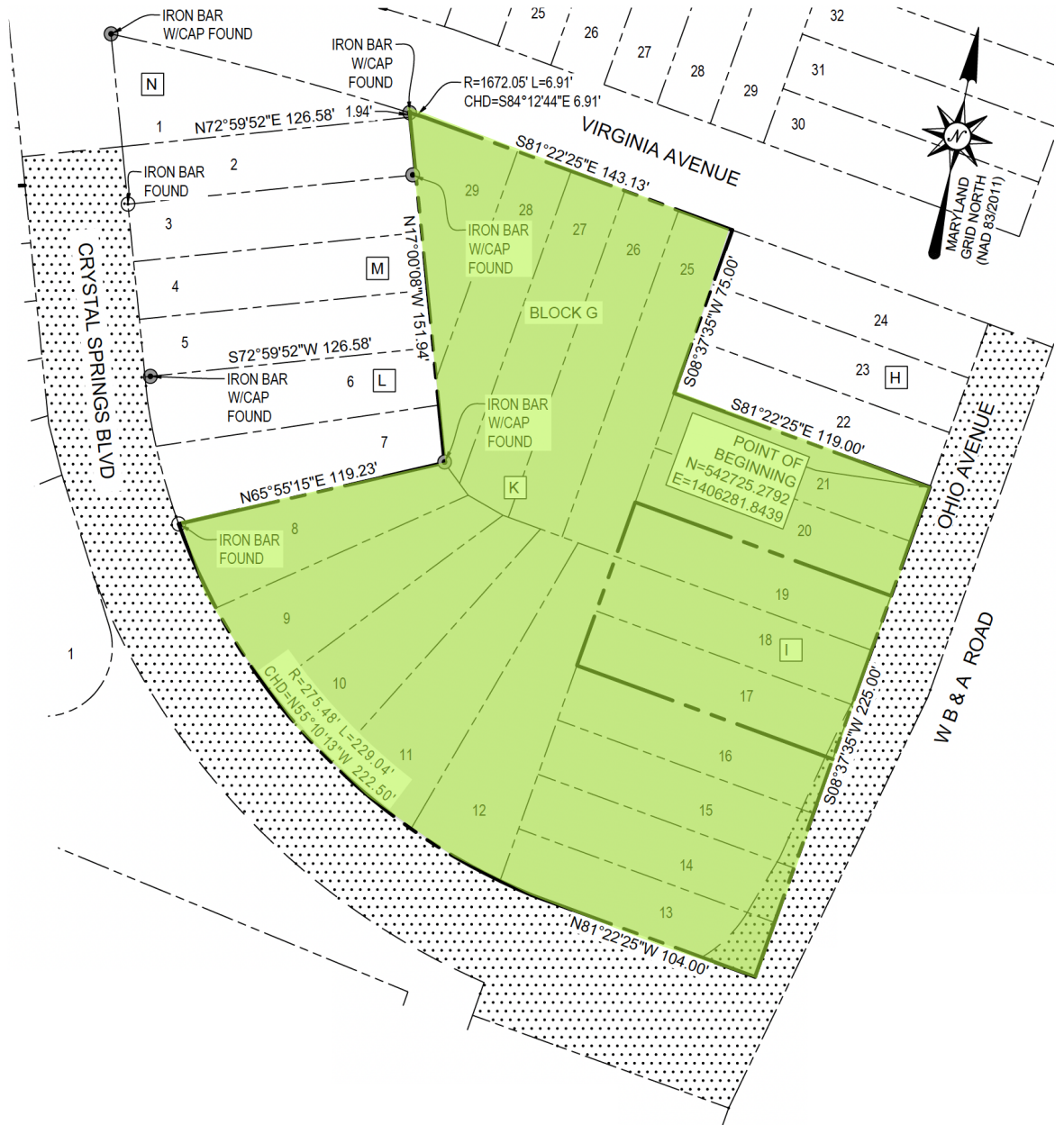


7550 W B&A ROAD

GLEN BURNIE, MD

PROPERTY HIGHLIGHTS:

- 1.455 acres of Commercial Land (W-2). Land is currently forested
- Grading permit (G02019721) submitted. Buyer to assume grading permit
- Easy access to Dorsey Road, Rte. 100, 50, 97, BWI Parkway and more
- Nearby BWI Airport, Thomas A. Dixon Jr. Aircraft Observation, Arundel Golf Park
- Contact Broker for additional information



LOCATION OVERVIEW



BWI
BALTIMORE/WASHINGTON
INTERNATIONAL

CROMWELL
BUSINESS PARK

MARYLAND
176

THOMAS A. DIXON,
JR. AIRCRAFT
OBSERVATION
AREA

INTERNATIONAL
TRADE CENTER
BUSINESS PARK

MARYLAND
STATE HIGHWAY
ASSOCIATION

**BWI PLAZA AT BWI
COMMERCE PARK**

SUBWAY State Farm
M&T Bank KUKI CHINESE FOOD
Burger King Domino's BWI LIQUORS

7550 W B & A ROAD
GLEN BURNIE, MD

**QUARTERFIELD CROSSING
SHOPPING CENTER**

sam's club Walmart
Wegmans Chick-fil-A Lowe's
KOHLS AT&T

While we have no reason to doubt the accuracy of any of the information supplied, we cannot, and do not, guarantee its accuracy. All information should be independently verified prior to a purchase or lease of the property. We are not responsible for errors, omissions, misuse, or misinterpretation of information contained herein and make no warranty of any kind, express or implied, with respect to the property or any other matters.

7550 W B&A ROAD

GLEN BURNIE, MD

Ryan J. Brant
rbrant@rossocre.com
C | 301.768.2710

John Rosso SIOR
john@rossocre.com
C | 410.802.1909



One Annapolis Street | Suite 101 | Annapolis, MD 21401 | www.RossoCRE.com

While we have no reason to doubt the accuracy of any of the information supplied, we cannot, and do not, guarantee its accuracy. All information should be independently verified prior to a purchase or lease of the property. We are not responsible for errors, omissions, misuse, or misinterpretation of information contained herein and make no warranty of any kind, express or implied, with respect to the property or any other matters.