

563 EAST TREMONT AVENUE

CORNER OF EAST TREMONT & LAFONTAINE AVENUES | EAST TREMONT



563 EAST TREMONT AVENUE

CORNER OF EAST TREMONT & LAFONTAINE AVENUES | EAST TREMONT

PROPERTY HIGHLIGHTS

- Prime Tremont Avenue corridor
- Fully built-out adult daycare
- Multiple forms of egress
- Includes elevator
- Neighboring tenants include:
McDonald's, United States Post Office, Extra Space Storage, Total Wireless, Kennedy Fried Chicken, Dunkin', & more!

SIZE: 8,500 SF Second Floor

FRONTAGE: 175' wraparound

CEILING HEIGHT: 9' 5"

POSSESSION: Immediate

ASKING RENT: Upon Request

TRANSPORTATION: **B D**

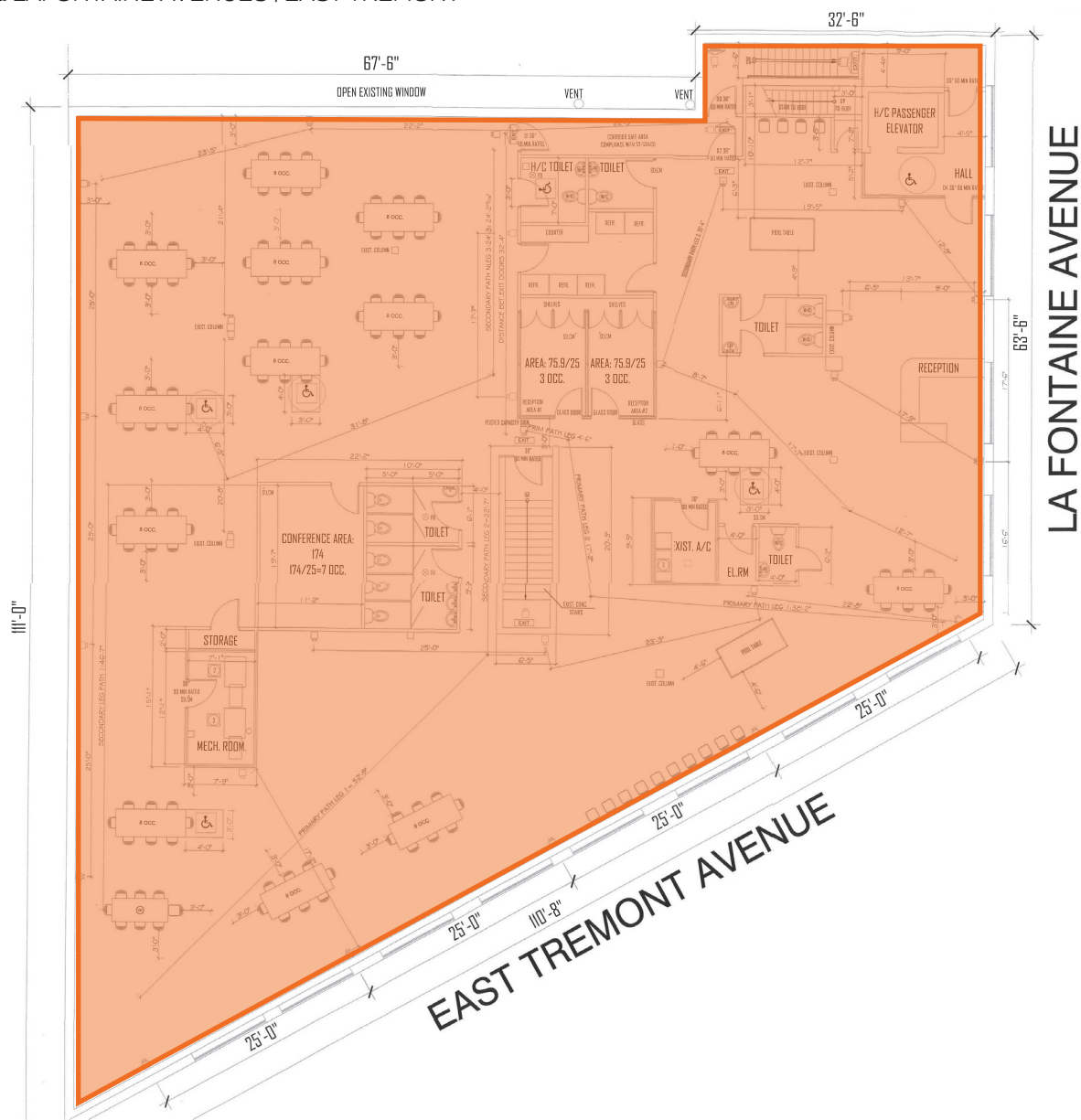


All information supplied in this marketing presentation and/or flyer is from sources deemed reliable and is furnished subject to errors, omissions, modifications, removal of listings from sale/lease and to any listing condition. Any square footage, dimensions, floor plans and/or technical data set forth are approximations and are subject to further elaboration/confirmation.



CORNER OF EAST TREMONT & LAFONTAINE AVENUES | EAST TREMONT

FLOOR PLANS:
SECOND FLOOR - 8,500 SF



563 EAST TREMONT AVENUE

CORNER OF EAST TREMONT & LAFONTAINE AVENUES | EAST TREMONT

FOR MORE INFORMATION,
PLEASE CONTACT:

ELI YADID

917.770.9173 | EYadid@ksrny.com

ROYEE ZARUM

347.755.8137 | RZarum@ksrny.com

