

430

NEISLER ST

±160,000 SF WAREHOUSE AVAILABLE FOR SALE

430 Neisler St, Shelby, NC 28152

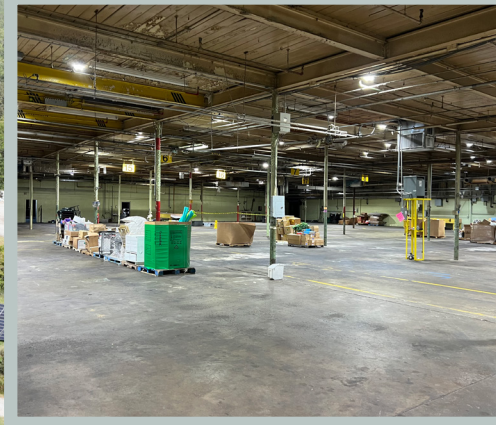
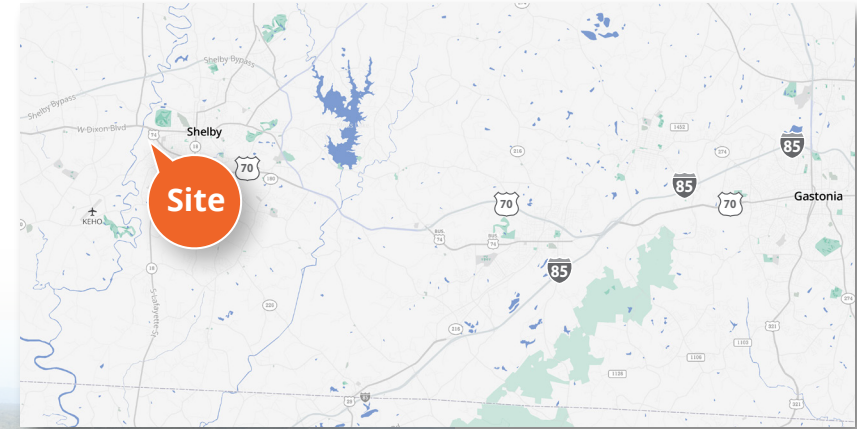


Nick Claudio
Senior Vice President
704 512 0231
nick.claudio@avisonyoung.com

**AVISON
YOUNG**

Property Overview

Located at 430 Neisler Street in Shelby, NC, this 160,000-square-foot industrial manufacturing facility offers prime access to Highway 74, providing direct connectivity to major interstates and regional markets like Charlotte and Atlanta. Situated in Cleveland County, the property benefits from a growing local economy with projected population and household growth over the next five years, making it an attractive investment for industrial operations. Shelby's strategic location and expanding infrastructure support a thriving industrial real estate market, ideal for logistics, manufacturing, or warehousing needs.

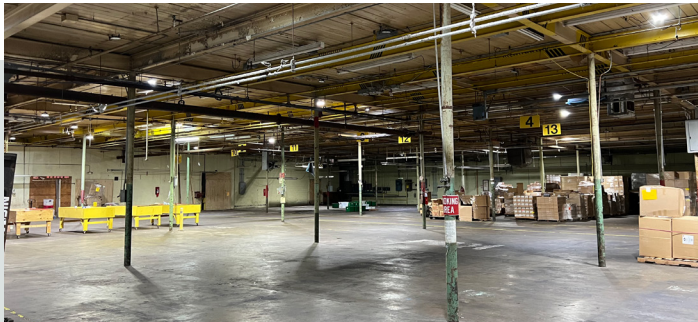


360° VIEW IT IN 3D
CLICK OR SCAN FOR TOUR



Building Specs

Parcel ID	71090
County	Cleveland
Building Size	±160,000 SF
Acreage	±21.98 AC
Zoning	General Industrial
Year Built	1975
Clear Height	14' - 16'
Loading Docks	Seven (7)
Drive-In Doors	One (1)
Lighting	Fluorescent
Construction	Masonry / Metal



430 Neisler St, Shelby, NC 28152

±160,000 SF WAREHOUSE AVAILABLE FOR SALE

NAVIGATION OVERVIEW

Charlotte, NC	48 miles
Augusta, GA	159 miles
Knoxville, TN	184 miles
Atlanta, GA	209 miles
Charleston, SC	244 miles
Wilmington, NC	252 miles
Savannah, GA	288 miles



Travel Time

	60 minutes
	120 minutes
	240 minutes

Nick Claudio
Senior Vice President
704 512 0231
nick.claudio@avisonyoung.com

**AVISON
YOUNG**