

# Fantastic Open Work Space | Prime Culver City Junction

**2,222**  
SQUARE FEET

**\$31.32** /yr  
RENT / SF

**\$5,800**  
RENT

**(310) 400-6148**

<http://www.westsidepropertymanagement.com>



PROPERTY ADDRESS

9005 Exposition Blvd. - Warehouse  
Los Angeles, CA 90034

LEASE TYPE: **Modified Gross**    AVAILABLE: **Now**

DESCRIPTION

Potential use could be coworking space, showroom, warehouse, or fitness studio (Tenants to verify).

Conveniently located within walking distance to Metro and the newly developed Culver City Junction, featuring a variety of shops, hotels, and food courts.

Key Features:

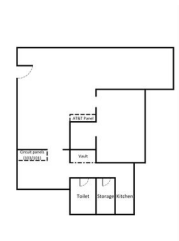
- Open workspace with private office space
- With kitchen and bathroom
- Close proximity to major companies such as Apple, HBO, Amazon's new offices, the Culver City IVY station, and leading streaming media companies.
- Easy freeway access for efficient transportation.
- High-speed fiber optic internet with speeds up to 5 GIG (5000 Mbps). 2,200 Sq. Ft., endless possibilities.
- Lease rate does not include utilities, property expenses or building expenses

Facilities Include:

- 24-hour access.
- Convenient access to bus lines and commuter rail services.
- Gated parking lot
- Video security system
- Dedicated bicycle storage
- Central heating and air conditioning for climate control

RENTAL TERMS

Rent	\$5,800
Security Deposit	\$11,600
Application Fee	\$49



View this listing online:

