

15 COLLEGE STREET
THOMASVILLE, NC

PRICE:
\$229,000

CAP RATE: 7.49%

INVESTMENT
**FOR
SALE**

DUPLEX PROPERTY

PROPERTY HIGHLIGHTS

A nicely renovated duplex located in Thomasville, NC with a total of $\pm 2,400$ SF, and located on ± 0.11 AC of land zoned residential. Renovated over the years to include newer windows, doors (interior and exterior), asphalt shingled roof, vinyl siding, concrete surface parking, central heat and air, modern kitchen build out with wooden cabinets, vinyl counter top, built in dishwasher (Unit A), laminate flooring, fresh paint, and lighting upgrades. The duplex is individually metered for water and each unit has washer and dryer connections.

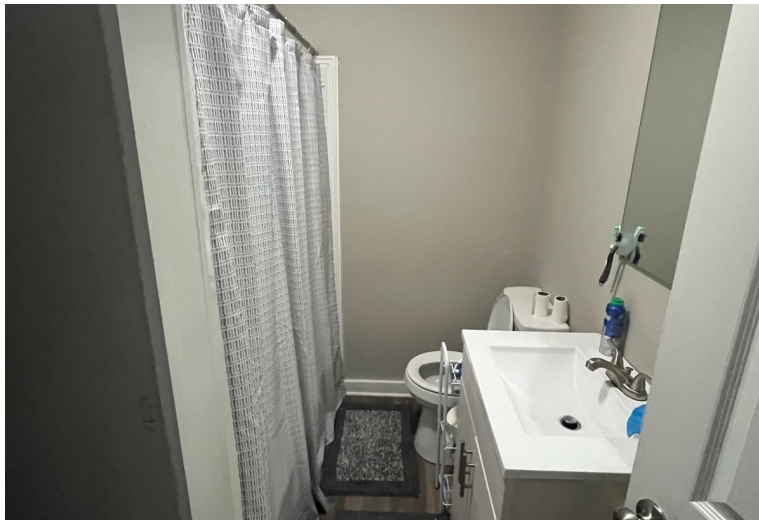
DEMOGRAPHICS

5 MILE RADIUS	
TOTAL POPULATION	57,724
TOTAL HOUSEHOLDS	22,995
AVERAGE HH INCOME	\$74,995

NAI Piedmont Triad
Commercial Real Estate Services, World Wide

R. TIM LICHTENSTEIN, CCIM
BROKER
336.423.8292
tlichtenstein@naipt.com

250 W. First Street, Suite 301 - Winston-Salem, NC 27101 • naipt.com



This material may contain content generated with AI assistance and publicly sourced data. NAI Piedmont Triad makes every effort to verify the information but makes no warranties or representations regarding the accuracy, completeness, or reliability of the information. Independent verification of all details is strongly encouraged. Prices, terms, and availability are subject to change without prior notice.

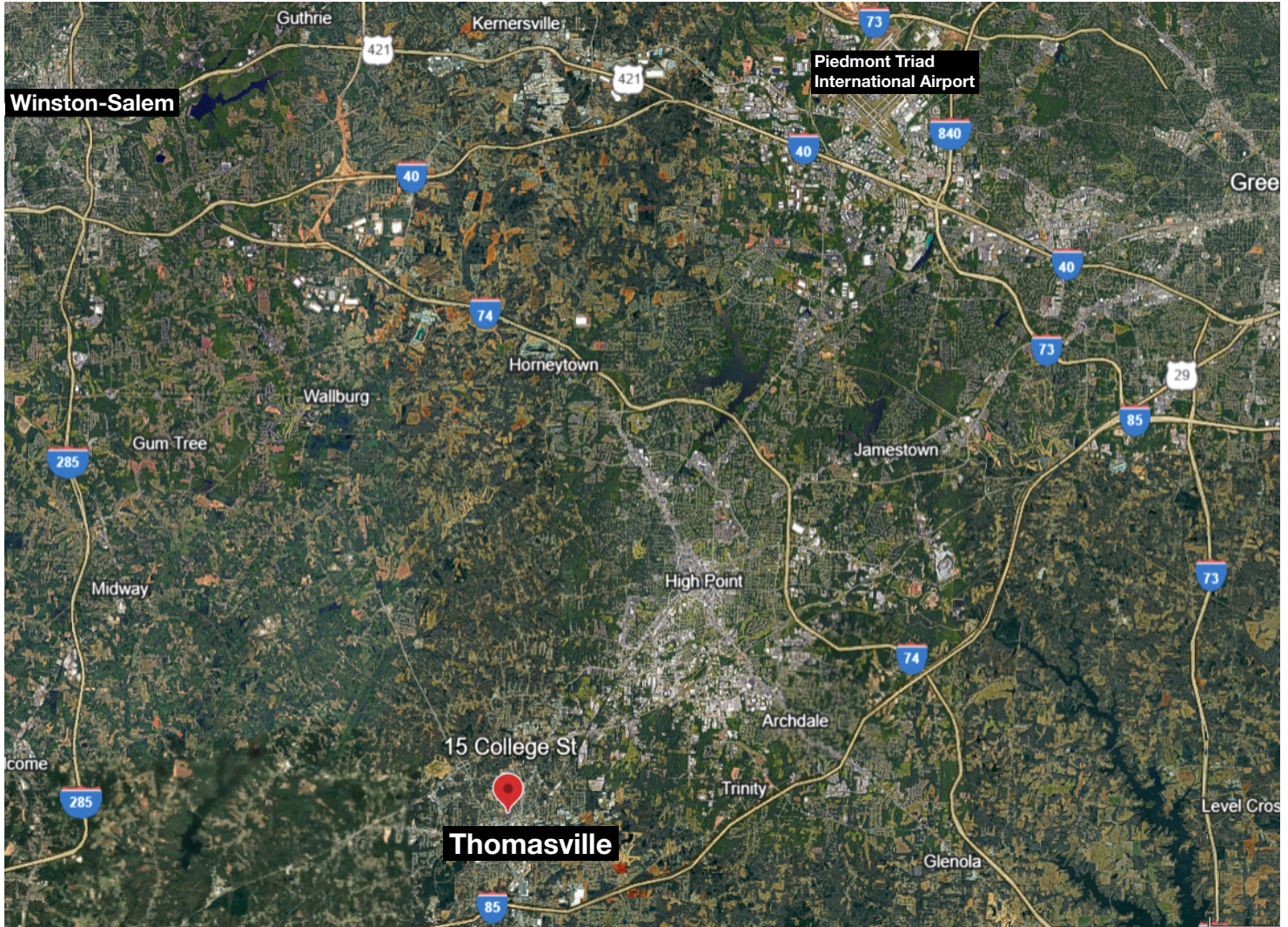
R. TIM LICHTENSTEIN

BROKER

336.423.8292

tlichtenstein@naipt.com

250 W. First Street, Suite 301 - Winston-Salem, NC 27101 • naipt.com



DISTANCE TO SITES OF INTEREST	
SITE	MILES
Winston-Salem CBD	20
Piedmont Triad International Airport	23.7
Lexington, NC	11.3

This material may contain content generated with AI assistance and publicly sourced data. NAI Piedmont Triad makes every effort to verify the information but makes no warranties or representations regarding the accuracy, completeness, or reliability of the information. Independent verification of all details is strongly encouraged. Prices, terms, and availability are subject to change without prior notice.

R. TIM LICHTENSTEIN, CCIM

BROKER

336.423.8292

rtlichtenstein@naipt.com

250 W. First Street, Suite 301 • Winston-Salem, NC 27101 • naipt.com