

À LOUER | FOR LEASE ± 2 473 - 9 000 PI² | SQ. FT.



ESPACE COMMERCIAL | RETAIL SPACE

2445 RUE DESAUTELS
MONTREAL, QC



Faits Saillants | Highlights

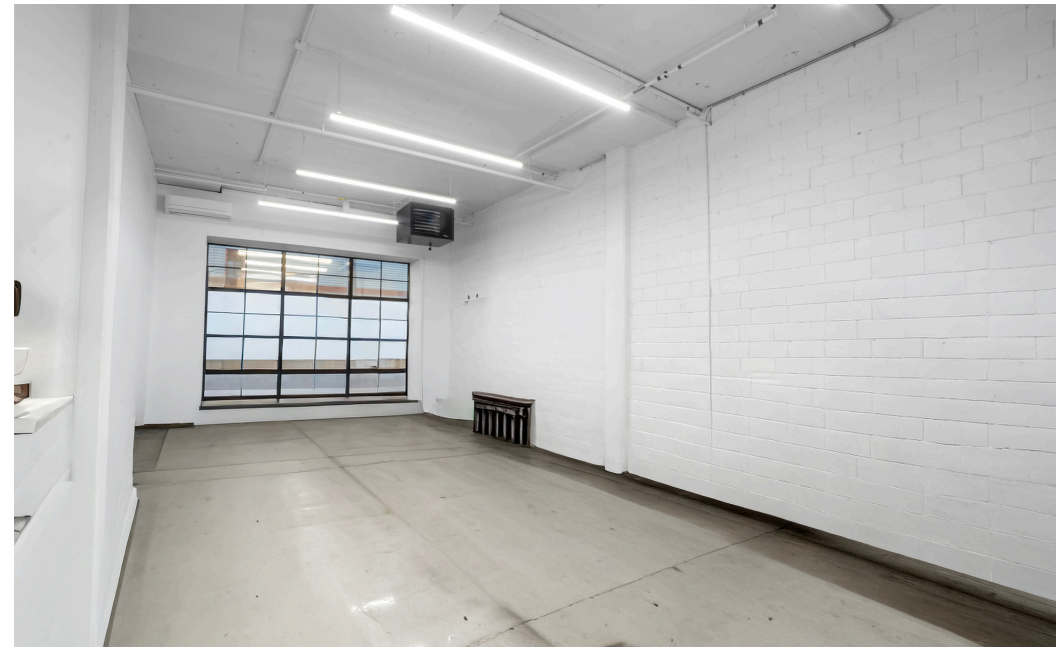
Superficie du bâtiment (pi²) ± 2 473 - 9 000
Available Area (sq. ft.)

Loyer demandé (pi²) 15.50 \$
Asking rent (sq. ft.)

Loyer additionnel (pi²) 3.33 \$
Additional rent (sq. ft.)

Portes au sol 2
Drive-in doors

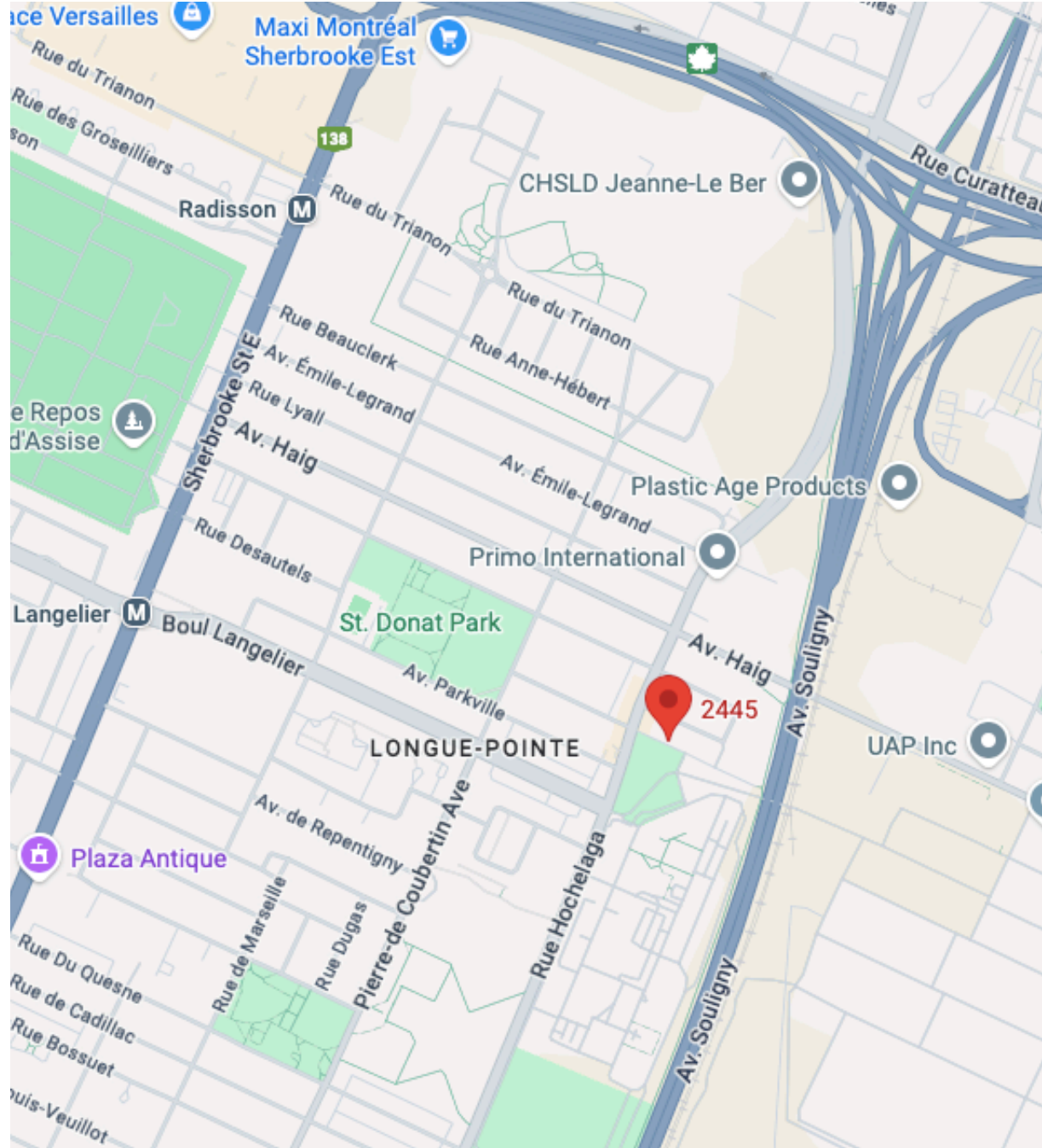
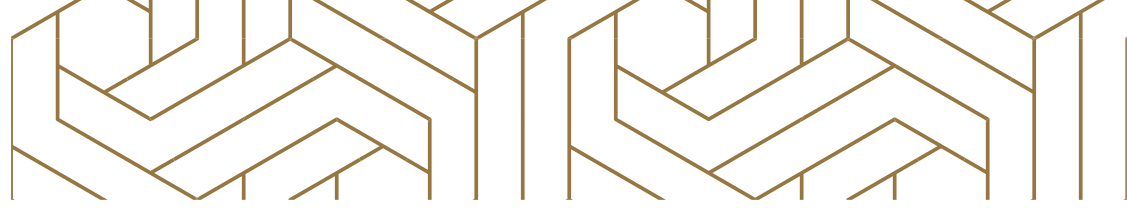
À proximité Autoroute 25
Close to Metro Langelier, Radisson



2445 RUE DESAUTELS
MONTREAL, QC

2445 RUE DESAUTELS

MONTREAL, QC





Communiquez avec nous:
Contact us:

Kyle Greenbaum

Courtier Immobilier Commercial et Résidentiel
Commercial and Residential Real Estate Broker

438-883-8389
kyle.greenbaum@kw.com

Samuel Benizri

Courtier Immobilier Commercial et Résidentiel
Commercial and Residential Real Estate Broker

514-629-9366
samuelbenizri@kw.com