

FOR LEASE

1,948 SF AVAILABLE

TECHNIPLEX BUSINESS CENTER

16203 PARK ROW DRIVE ▪ SUITE 175 ▪ HOUSTON, TX 77084

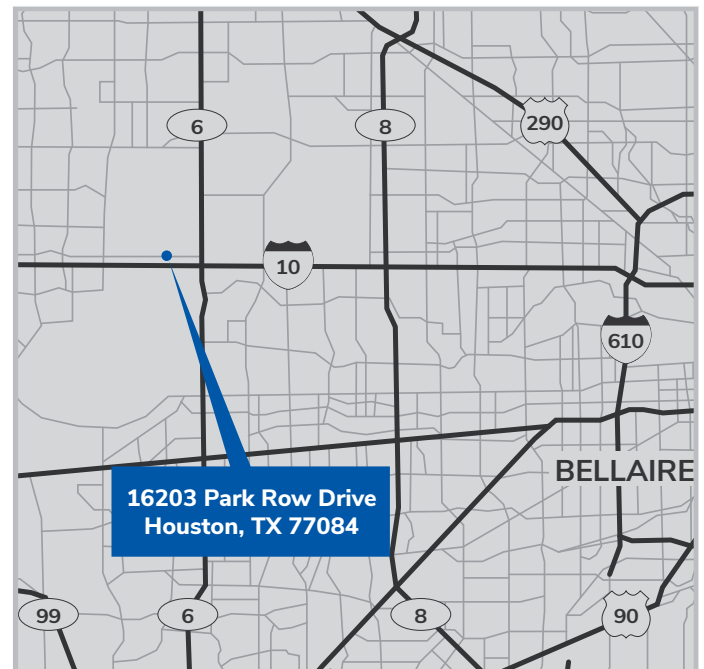


BUILDING FEATURES

- Located in the heart of the Energy Corridor immediately off of Interstate 10 with convenient access to major thoroughfares:
 - Hwy. 6 – 1.3 miles
 - Beltway 8 – 6.5 miles
 - Grand Pkwy 99 – 7.0 miles
- Corporate appeal in a business park setting with a variety of offerings, including, flex, distribution, and lab type spaces.
- 55,421 SF total building size | Rear-load | Grade-level loading

SUITE FEATURES

- 1,948 SF total
 - 759 SF office
 - 1,189 SF warehouse
- 12' clear height
- 1 grade-level door



For leasing information, please contact Stream Realty Partners

MEG ZSCHAPPEL | 713.300.0284 | meg.zschappel@streamrealty.com

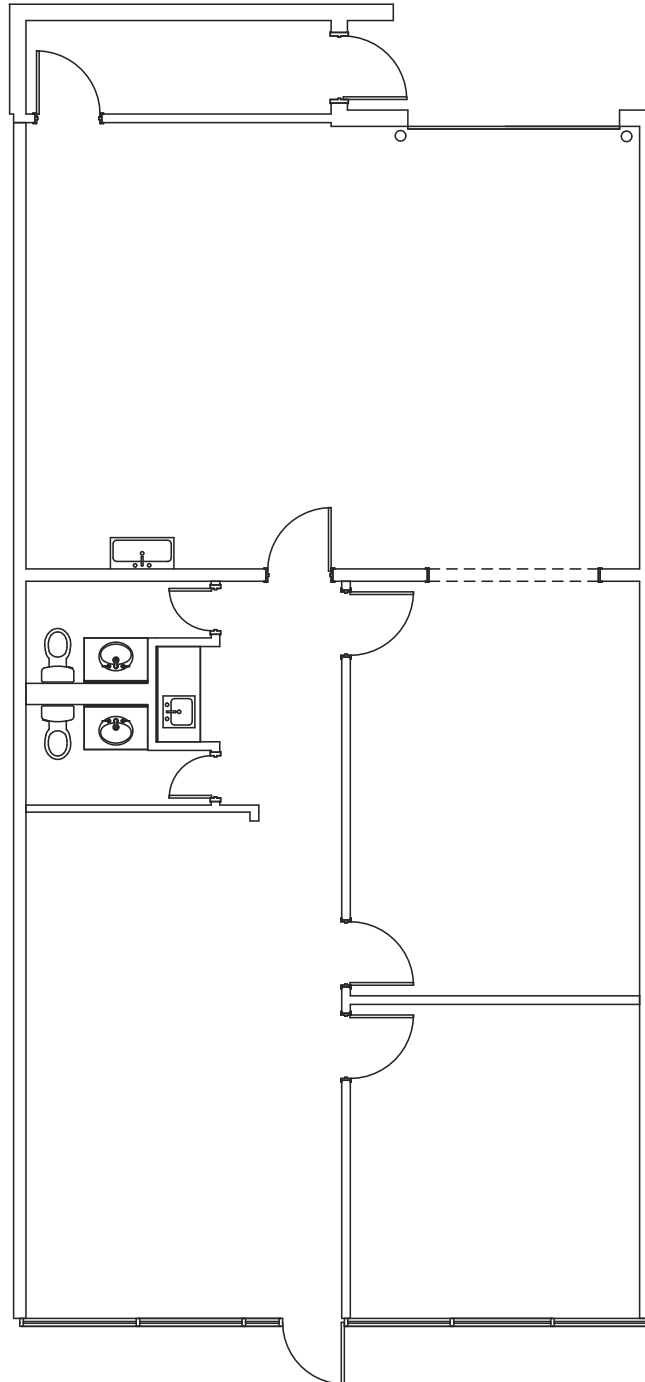
NATALIE GILBERT | 713.332.3413 | natalie.gilbert@streamrealty.com

FOR LEASE

1,948 SF AVAILABLE

TECHNIPLEX BUSINESS CENTER

16203 PARK ROW DRIVE ▪ SUITE 175 ▪ HOUSTON, TX 77084



For leasing information, please contact Stream Realty Partners

MEG ZSCHAPPEL | 713.300.0284 | meg.zschappel@streamrealty.com

NATALIE GILBERT | 713.332.3413 | natalie.gilbert@streamrealty.com