



For Lease

**Chamie Burroughs**  
First Vice President  
+1 757 217 1878  
chamie.burroughs@colliers.com

**Tyler Brooks**  
Vice President  
+1 757 213 8110  
tyler.brooks@colliers.com

150 W Main Street | Suite 1100  
Norfolk, VA 23510  
+ 757 490 3300  
colliers.com

2,100 sf on .78 Acres

1080 George Washington Hwy N | Chesapeake, Virginia

Colliers

Accelerating success.

# Property Overview

Description: Located at the signalized corner of George Washington Highway and Gilmerton Road in Chesapeake. Minutes from I-265, I-64 and Rt 460.

Address: 1080 George Washington Hwy, Chesapeake, VA

Available: **2,100 sf**

Lease Rate: \$18.00

Surrounding Commercial: Family Dollar, Auto Zone, Food Lion

Traffic Counts: 14,000 ADT

## Demographics

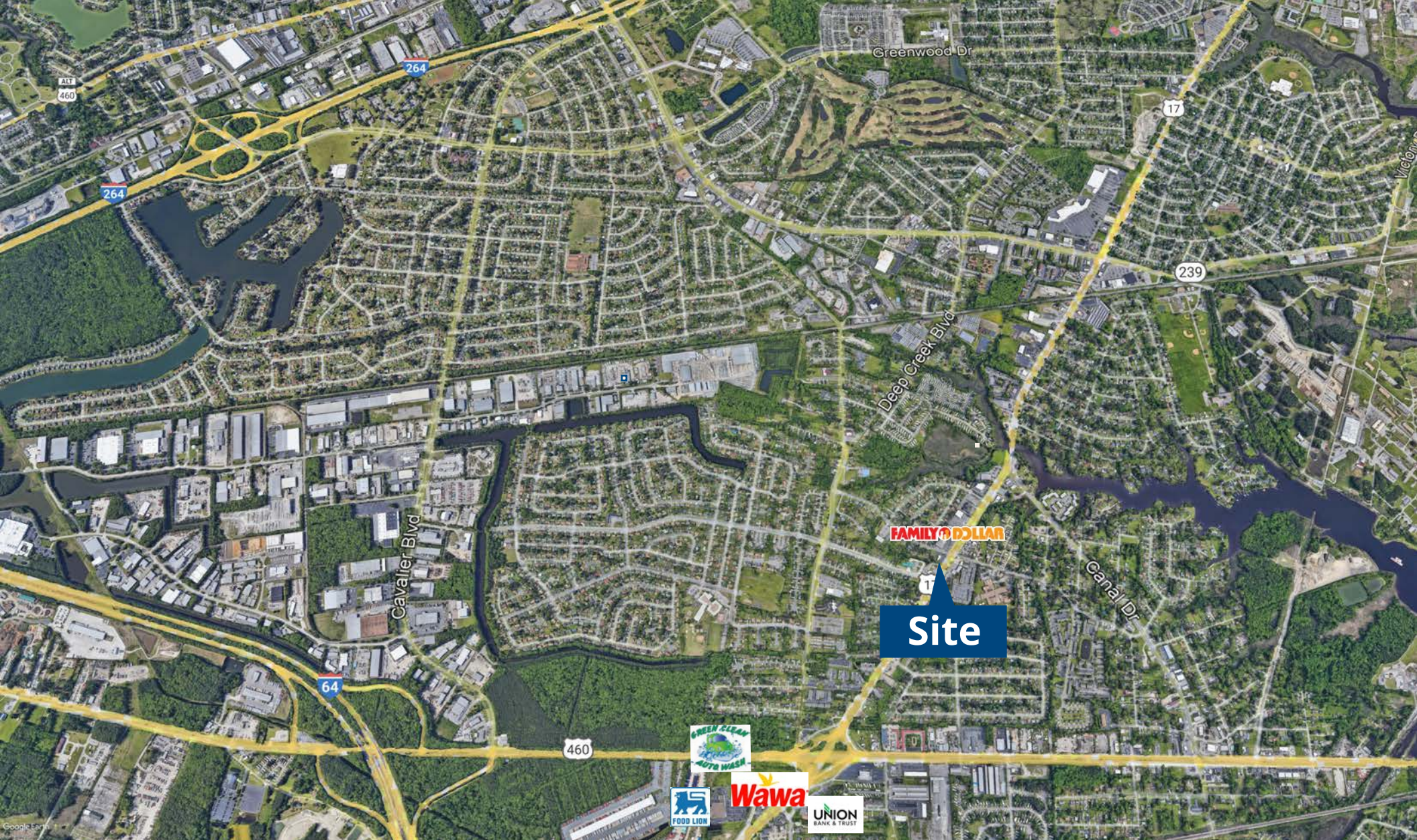
Demographic Facts	1 Mile	3 Miles	5 Miles
Population	12,742	56,687	169,215
Daytime Population	10,340	55,651	160,917
Average HH Income	\$66,924	\$67,763	\$72,998



# Photos







**Chamie Burroughs**  
First Vice President  
+1 757 217 1878  
chamie.burroughs@colliers.com

**Tyler Brooks**  
Vice President  
+1 757 213 8110  
tyler.brooks@colliers.com

150 W Main Street, St 1100  
Norfolk, VA 23510  
P: +1 757 490 3300  
colliers.com

