

CENTRAL PARK EAST

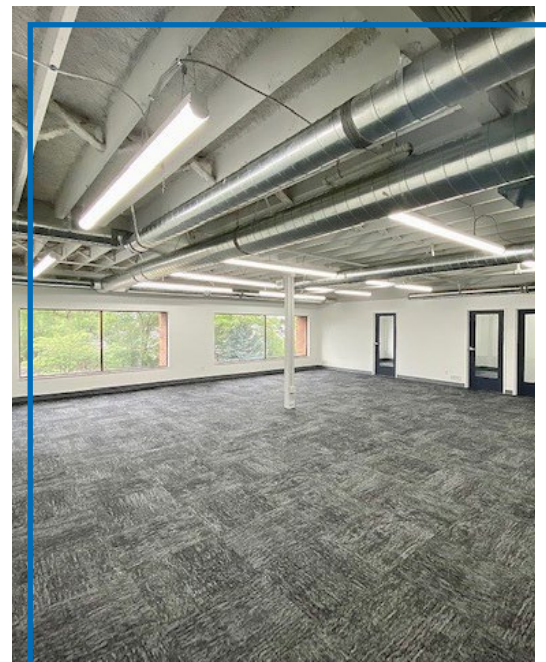
FOR SALE



PROPERTY DETAILS

1815 South State Street, Orem, UT 84097

- Purchase price: \$2,629,450 up to \$8,803,260
- First floor: \$215/SF
 - » Suite 101: 5,182 SF
 - » Suite 102: 7,048 SF
- Second floor: \$245/SF
 - » Suite 201: 13,619 SF
- Third floor: \$235/SF
 - » Suite 301: 12,073 SF
- Updated common areas
- Open and built-out floor plan
- On-site fitness center with two racquetball courts, basketball, sauna, and showers
- Close proximity to numerous amenities and food services
- Fiber optic connectivity
- Backup generation
- Abundant parking
- 9'+ ceilings
- Stunning views of the Provo valley and mountains



CODY BLACK, OWNER/AGENT
cblack@newmarkmw.com
direct 385.233.9141
[View Profile](#)

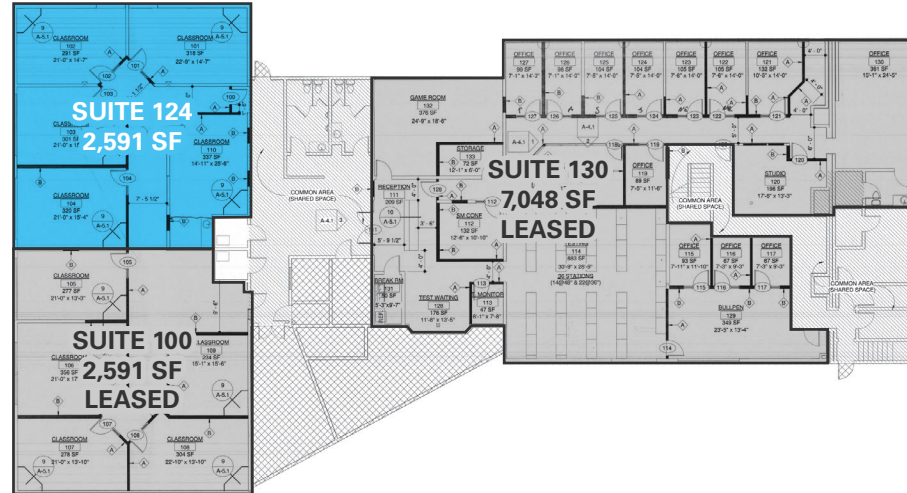
SHAD WEBB, OWNER/AGENT
swebb@newmarkmw.com
direct 435.459.0212
[View Profile](#)

**FULL SERVICE
COMMERCIAL REAL ESTATE**
2015 West Grove Parkway, Suite J
Pleasant Grove, UT 84062
Office 385.233.9140
www.newmarkmw.com

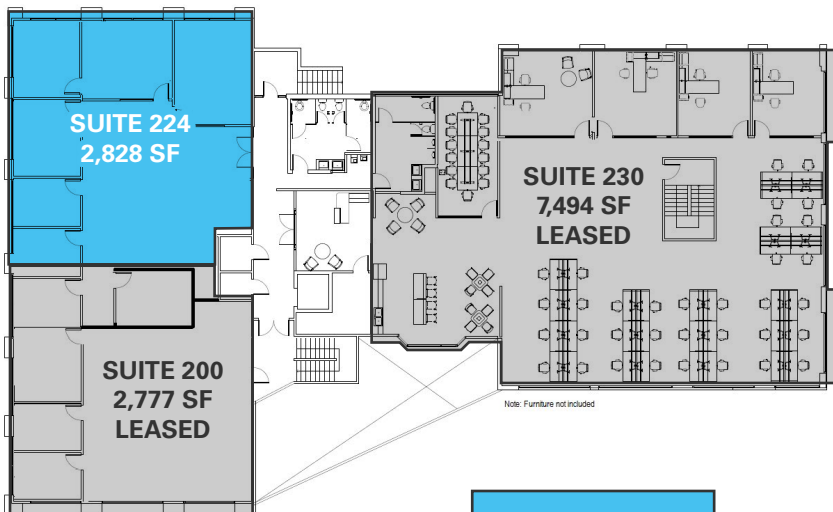
CENTRAL PARK EAST

FLOOR PLANS

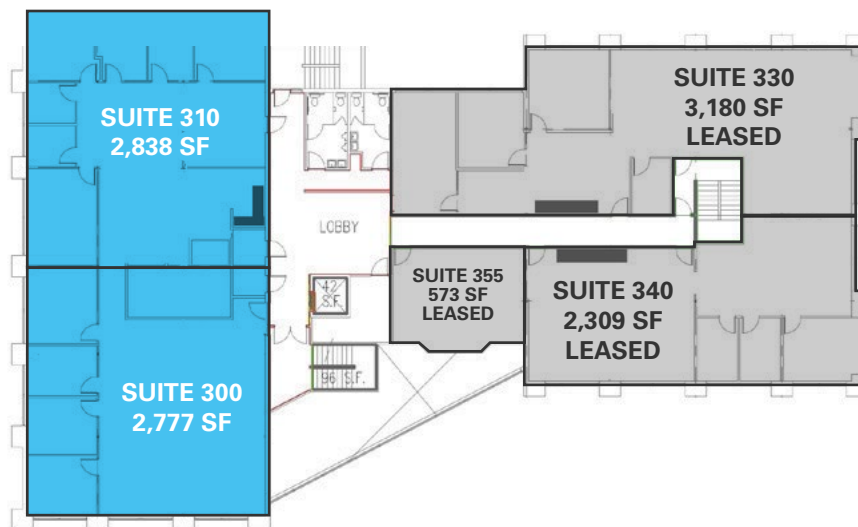
1ST FLOOR



2ND FLOOR



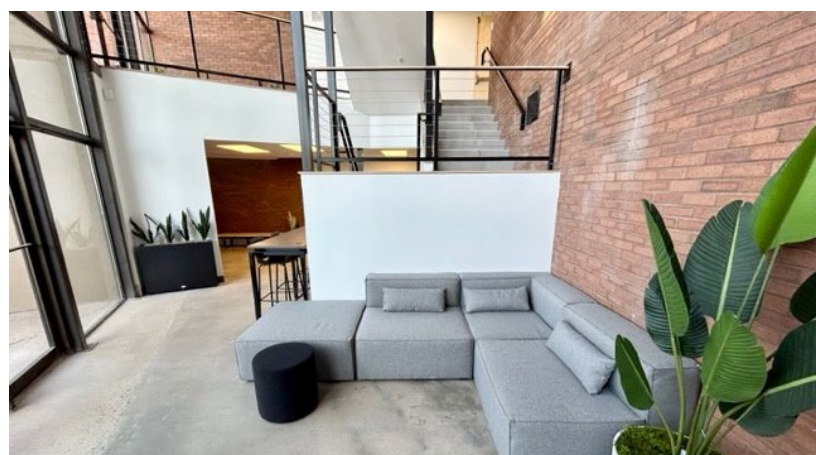
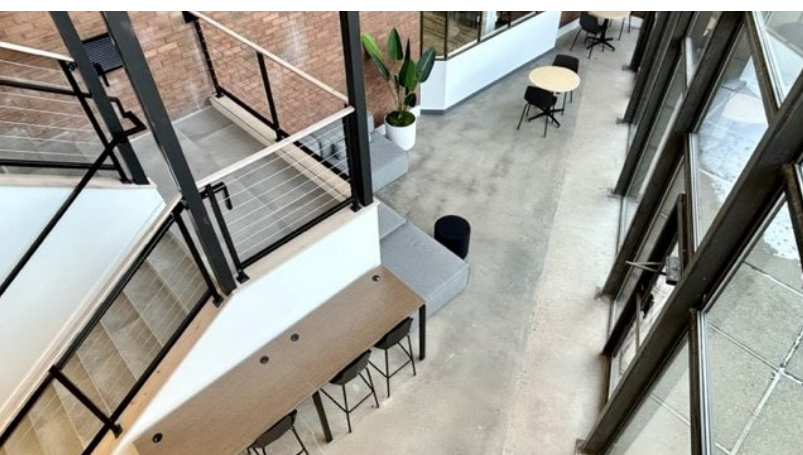
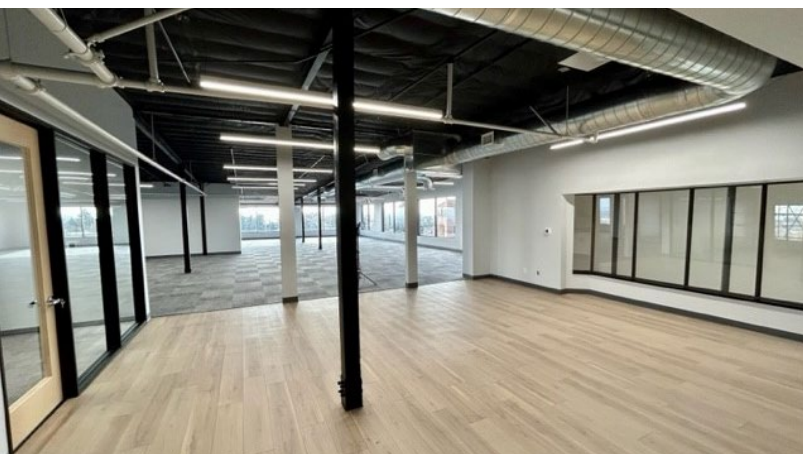
3RD FLOOR



CODY BLACK, OWNER/AGENT
 cblack@newmarkmw.com
 direct 385.233.9141
[View Profile](#)

SHAD WEBB, OWNER/AGENT
 swebb@newmarkmw.com
 direct 435.459.0212
[View Profile](#)

**FULL SERVICE
 COMMERCIAL REAL ESTATE**
 2015 West Grove Parkway, Suite J
 Pleasant Grove, UT 84062
 Office 385.233.9140
www.newmarkmw.com



NEWMARK
MOUNTAIN WEST

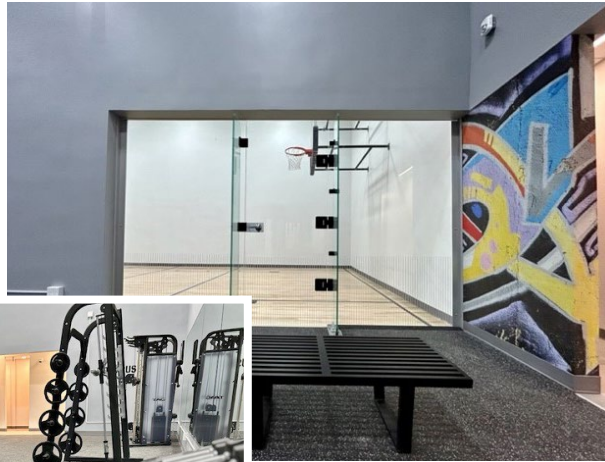
CODY BLACK, OWNER/AGENT
cblack@newmarkmw.com
direct 385.233.9141
[View Profile](#)

SHAD WEBB, OWNER/AGENT
swebb@newmarkmw.com
direct 435.459.0212
[View Profile](#)

**FULL SERVICE
COMMERCIAL REAL ESTATE**
2015 West Grove Parkway, Suite J
Pleasant Grove, UT 84062
Office 385.233.9140
www.newmarkmw.com

CENTRAL PARK EAST

GYM



Gym



Outdoor Sports Court - Pickleball and Basketball

NEWMARK
MOUNTAIN WEST

CODY BLACK, OWNER/AGENT
cblack@newmarkmw.com
direct 385.233.9141
[View Profile](#)

SHAD WEBB, OWNER/AGENT
swebb@newmarkmw.com
direct 435.459.0212
[View Profile](#)

**FULL SERVICE
COMMERCIAL REAL ESTATE**
2015 West Grove Parkway, Suite J
Pleasant Grove, UT 84062
Office 385.233.9140
www.newmarkmw.com



SHAD WEBB, OWNER/AGENT
 swebb@newmarkmw.com
 direct 435.459.0212
[View Profile](#)