

VISTAWILLA PROFESSIONAL CENTER

387 Vistawilla Drive | Winter Springs, FL 32708

Pre-Leasing Office/Medical Space

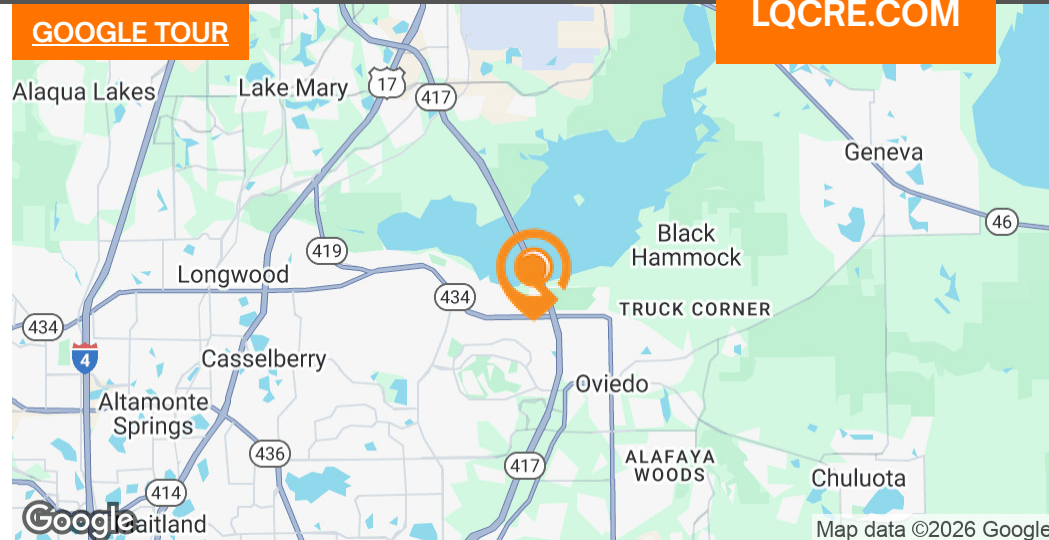


LQ Commercial
REAL ESTATE SERVICES

LQCRE.COM



GOOGLE TOUR



**CALL FOR
RATES**



**1,400 - 9,000 SF
SIZE**



**9,000 SF
GLA**



**PUD
ZONING**

- Pre-leasing 1,400 - 9,000 SF Professional/Medical/Office or Light Retail in Winter Springs, FL
- Suitable for childcare, school, medical, physical therapy, and single use tenant
- Located off SR 434 (24,500 CPD) with easy access to SR 417 (63,000 CPD)
- Surrounded by dense residential neighborhoods and complimentary retail
- Near many other medical facilities along SR 417 and Red Bug Lake Rd



5-MI TOTAL POPULATION

127,049



5-MI # HOUSEHOLDS

48,552



5-MI AVG HH INCOME

\$127,223



5-MI # EMPLOYEES

40,381

[PROPERTIES.LQCRE.COM/VISTAWILLA-CENTER](https://properties.lqcre.com/vistawilla-center)



500 Winderley Pl #104
Maitland, FL 32751
LQCRE.COM

Julia Sosa

Founding Principal - Orlando

D: 407.775.4358

C: 407.257.8246

jsosa@lqcre.com

Eva Royal

Principal, Senior Associate

D: 407.705.2217

C: 407.421.3532

eroyal@lqcre.com

Information obtained from owner(s) or other sources deemed reliable. We have no reason to doubt its accuracy, but cannot guarantee it. All properties subject to change or withdrawal without notice.

VISTAWILLA PROFESSIONAL CENTER

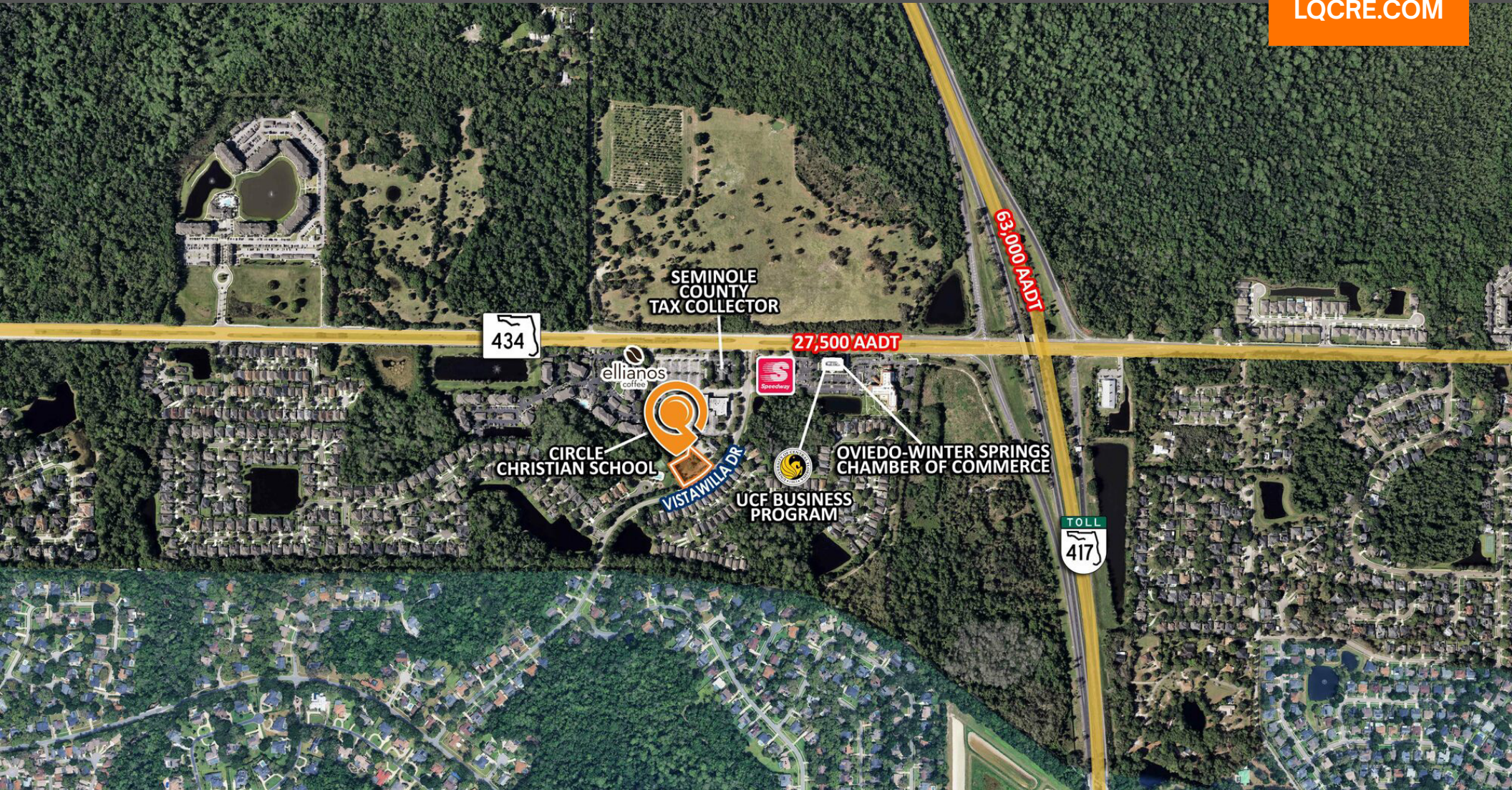
387 Vistawilla Drive | Winter Springs, FL 32708

Pre-Leasing Office/Medical Space



LQ Commercial
REAL ESTATE SERVICES

LQCRE.COM



LQ Commercial
REAL ESTATE SERVICES

500 Winderley Pl #104
Maitland, FL 32751
LQCRE.COM

Julia Sosa

Founding Principal - Orlando
D: 407.775.4358
C: 407.257.8246
jsosa@lqcre.com

Eva Royal

Principal, Senior Associate
D: 407.705.2217
C: 407.421.3532
eroyal@lqcre.com

Information obtained from owner(s) or other sources deemed reliable. We have no reason to doubt its accuracy, but cannot guarantee it. All properties subject to change or withdrawal without notice.

VISTAWILLA PROFESSIONAL CENTER

387 Vistawilla Drive | Winter Springs, FL 32708

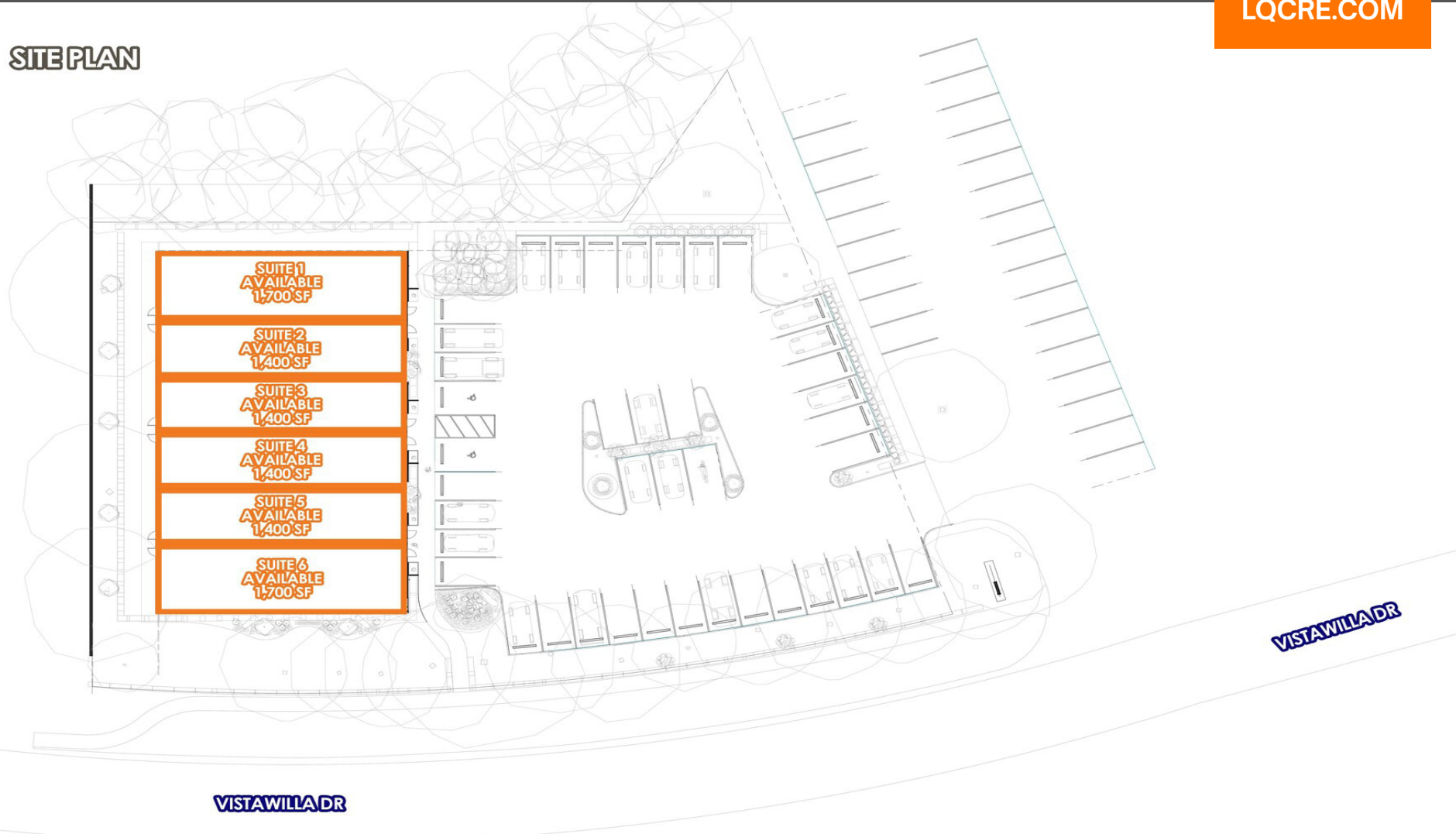
Pre-Leasing Office/Medical Space



LQ Commercial
REAL ESTATE SERVICES

LQCRE.COM

SITE PLAN



LQ Commercial
REAL ESTATE SERVICES

500 Winderley Pl #104

Maitland, FL 32751

LQCRE.COM

Julia Sosa

Founding Principal - Orlando

D: 407.775.4358

C: 407.257.8246

jsosa@lqcre.com

Eva Royal

Principal, Senior Associate

D: 407.705.2217

C: 407.421.3532

eroyal@lqcre.com

Information obtained from owner(s) or other sources deemed reliable. We have no reason to doubt its accuracy, but cannot guarantee it. All properties subject to change or withdrawal without notice.

VISTAWILLA PROFESSIONAL CENTER

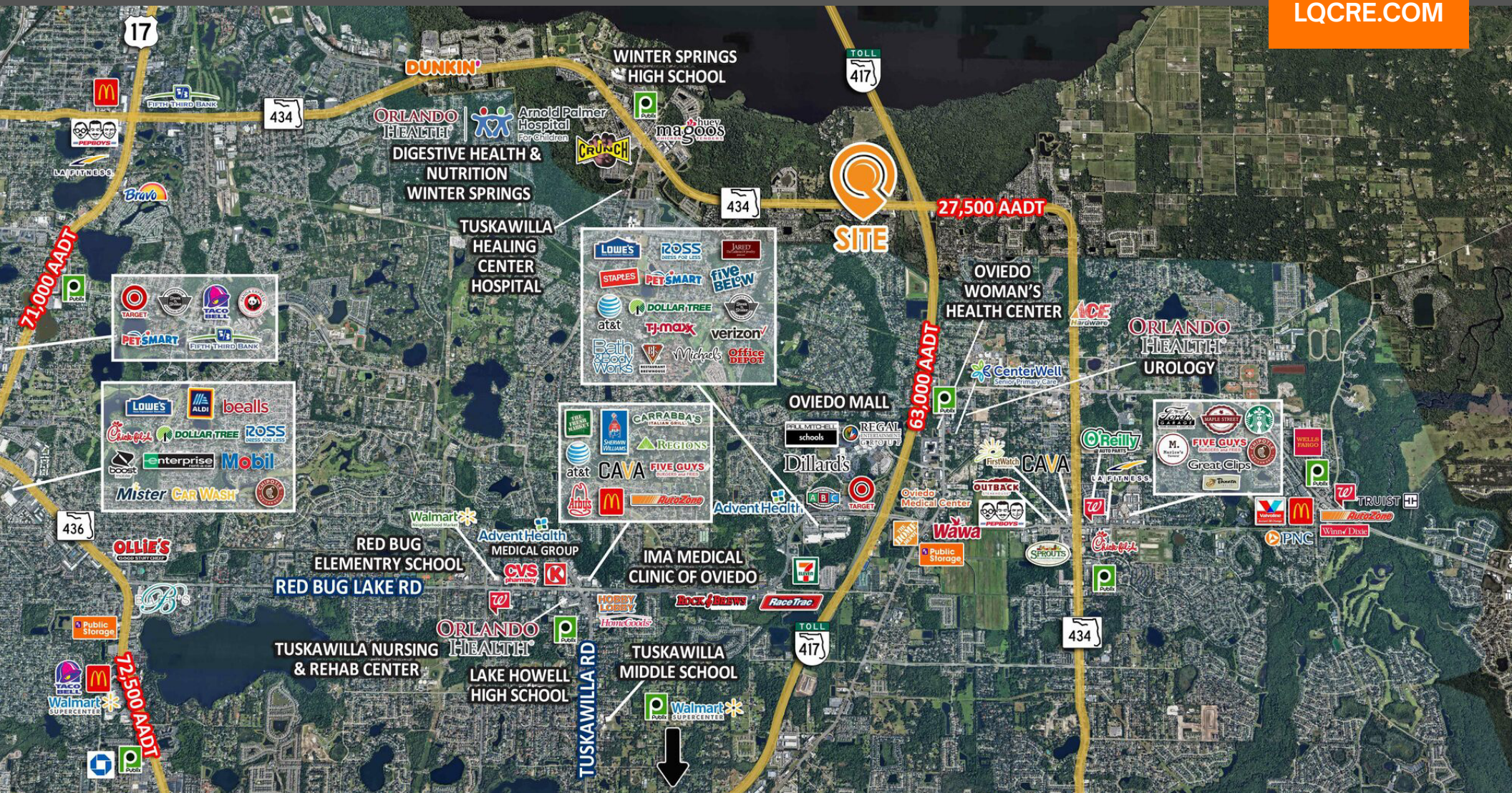
387 Vistawilla Drive | Winter Springs, FL 32708

Pre-Leasing Office/Medical Space



LQ Commercial
REAL ESTATE SERVICES

LQCRE.COM



LQ Commercial
REAL ESTATE SERVICES

500 Winderley Pl #104

Maitland, FL 32751

LQCRE.COM

Julia Sosa

Founding Principal - Orlando

D: 407.775.4358

C: 407.257.8246

jsosa@lqcre.com

Eva Royal

Principal, Senior Associate

D: 407.705.2217

C: 407.421.3532

eroyal@lqcre.com

Information obtained from owner(s) or other sources deemed reliable. We have no reason to doubt its accuracy, but cannot guarantee it. All properties subject to change or withdrawal without notice.

VISTAWILLA PROFESSIONAL CENTER

387 Vistawilla Drive | Winter Springs, FL 32708

Pre-Leasing Office/Medical Space



LQ Commercial
REAL ESTATE SERVICES

LQCRE.COM



LQ Commercial
REAL ESTATE SERVICES

500 Winderley Pl #104

Maitland, FL 32751

LQCRE.COM

Julia Sosa

Founding Principal - Orlando

D: 407.775.4358

C: 407.257.8246

jsosa@lqcre.com

Eva Royal

Principal, Senior Associate

D: 407.705.2217

C: 407.421.3532

eroyal@lqcre.com

Information obtained from owner(s) or other sources deemed reliable. We have no reason to doubt its accuracy, but cannot guarantee it. All properties subject to change or withdrawal without notice.