

FOR LEASE

Glenn Drive Technology Park

950 Glenn Drive

Folsom, CA 95630



AVAILABLE:

Suite 160 +/- 7,610 RSF (\$2.10 RSF "as-is")

Suite 210 +/- 4,051 RSF (\$2.10 RSF w/ \$75.00/USF TI Allowance)

Suite 245 +/- 2,670 RSF (\$2.10 RSF "as is")

Suite 270+/- 1,712 RSF (\$2.10 RSF "as is")

Suite 275+/- 1,098 RSF (\$2.10 RSF "as is") Coming Soon

Suite 285 +/- 1,026 RSF (\$2.10 RSF "as is")

(All suites are offered on a Full Service basis)

PROPERTY HIGHLIGHTS

- Great visibility
- High Quality Building Finishes
- Signage Available
- Abundant Parking
- Building Equipped with Elevator Service
- Onsite Showers in Building Restrooms
- Close Proximity to Shopping
- Walking Distance to Light Rail Station
- Easy Access to HWY 50

SUMMARY:

950 Glenn Drive, a 65,500 SF Class-A office space, is a part of Glenn Drive Technology Park of Folsom. The property boasts high-end finishes throughout including an opaque glass lobby floor, stone veneer finishes and on-site shower facilities. The location also provides tenants with the latest energy efficiency, high speed data cabling, security and after-hours key access. With the availability of both suites and shell space, this location offers maximum flexibility in designing a space to meet each tenants needs. Located in Folsom, the property is easily accessed from US Highway 50, Prairie City Road and Folsom Boulevard. In addition, it is within walking distance of Sacramento Light Rail service. The property's close proximity to executive housing makes it a natural fit for professional office users and the ease of access and abundant amenities make this location irreplaceable.

QUIROZ COMMERCIAL, INC

www.quirozcre.com
BRE# 02113619

Douglas Quiroz

President
916-933-2300 Office
doug@quirozcre.com

Kaci Dube

Leasing Agent/Property Manager
916-933-2300 Office
kaci@quirozcre.com

PROPERTY PHOTOS



QUIROZ COMMERCIAL, INC

www.quirozcre.com
BRE# 02113619

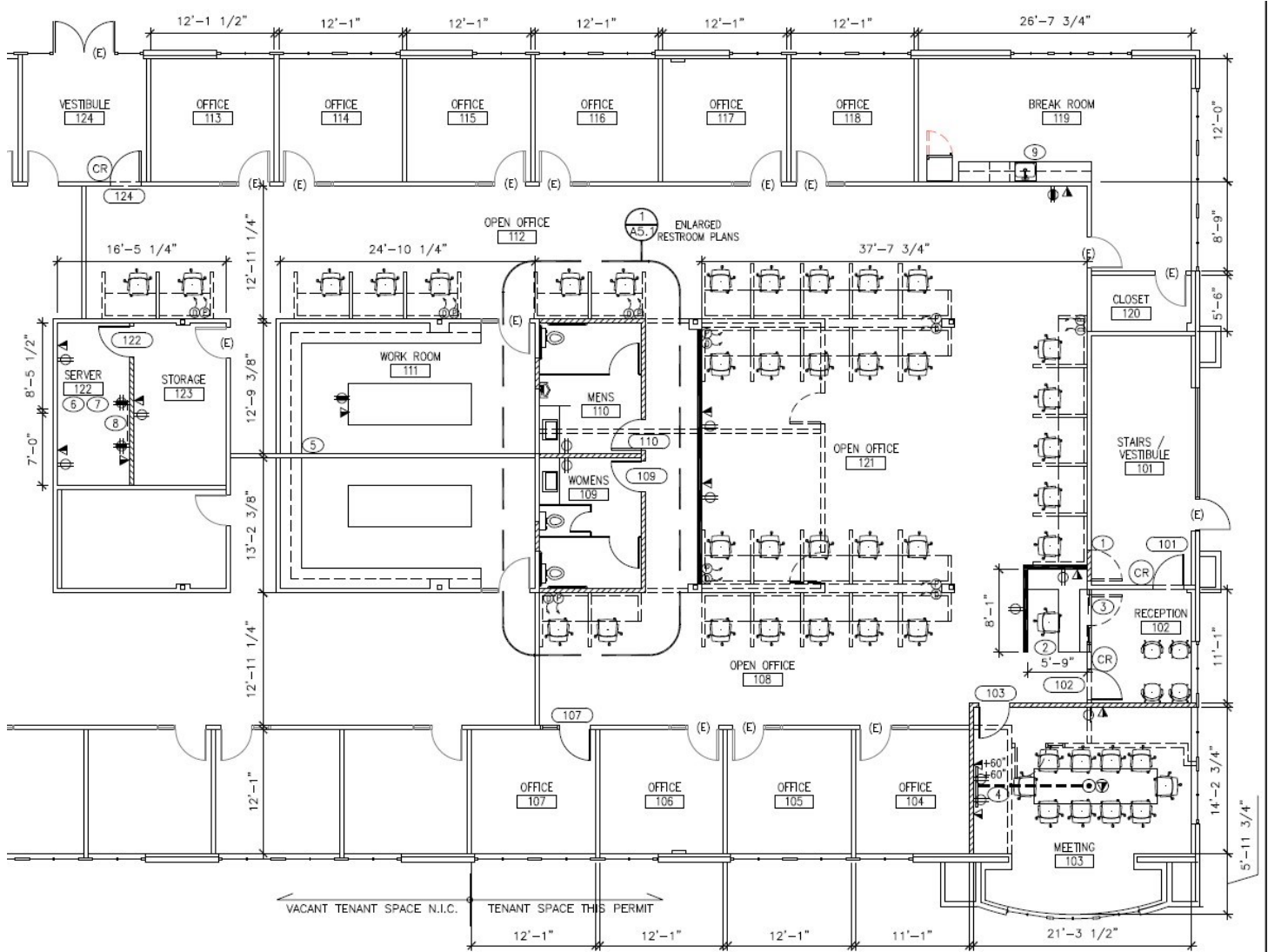
Douglas Quiroz

President
916-933-2300 Office
doug@quirozcre.com

Kaci Dube

Leasing Agent/Property Manager
916-933-2300 Office
kaci@quirozcre.com

AVAILABLE FLOOR PLANS



Suite 160

+/- 7,610RSF

Note: All Dimensions are approximate

QUIROZ COMMERCIAL, INC

www.quirozcre.com
BRE# 02113619

Douglas Quiroz

President
916-933-2300 Office
doug@quirozcre.com

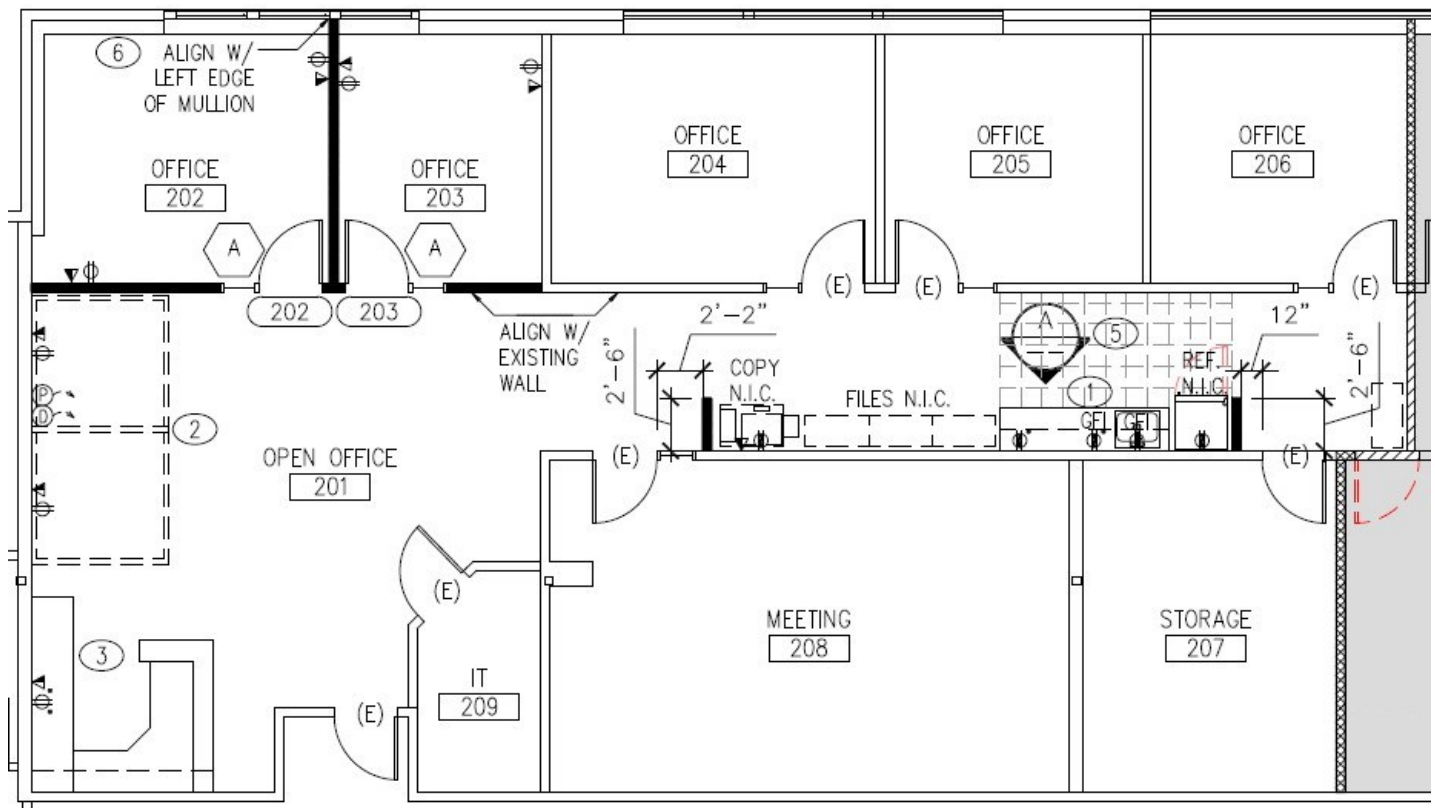
Kaci Dube

Leasing Agent/Property Manager
916-933-2300 Office
kaci@quirozcre.com

AVAILABLE FLOOR PLANS



Suite 245 +/- 2,670 RSF



Note: All Dimensions are approximate

QUIROZ COMMERCIAL, INC

www.quirazcre.com
BRE# 02113619

Douglas Quiroz

President
916-933-2300 Office
doug@quirazcre.com

Kaci Dube

Leasing Agent/Property Manager
916-933-2300 Office
kaci@quirazcre.com

AVAILABLE FLOOR PLANS



Suite 275
+/- 1,098 RSF

Note: All Dimensions are approximate

QUIROZ COMMERCIAL, INC

www.quirazcre.com
BRE# 02113619

Douglas Quiroz

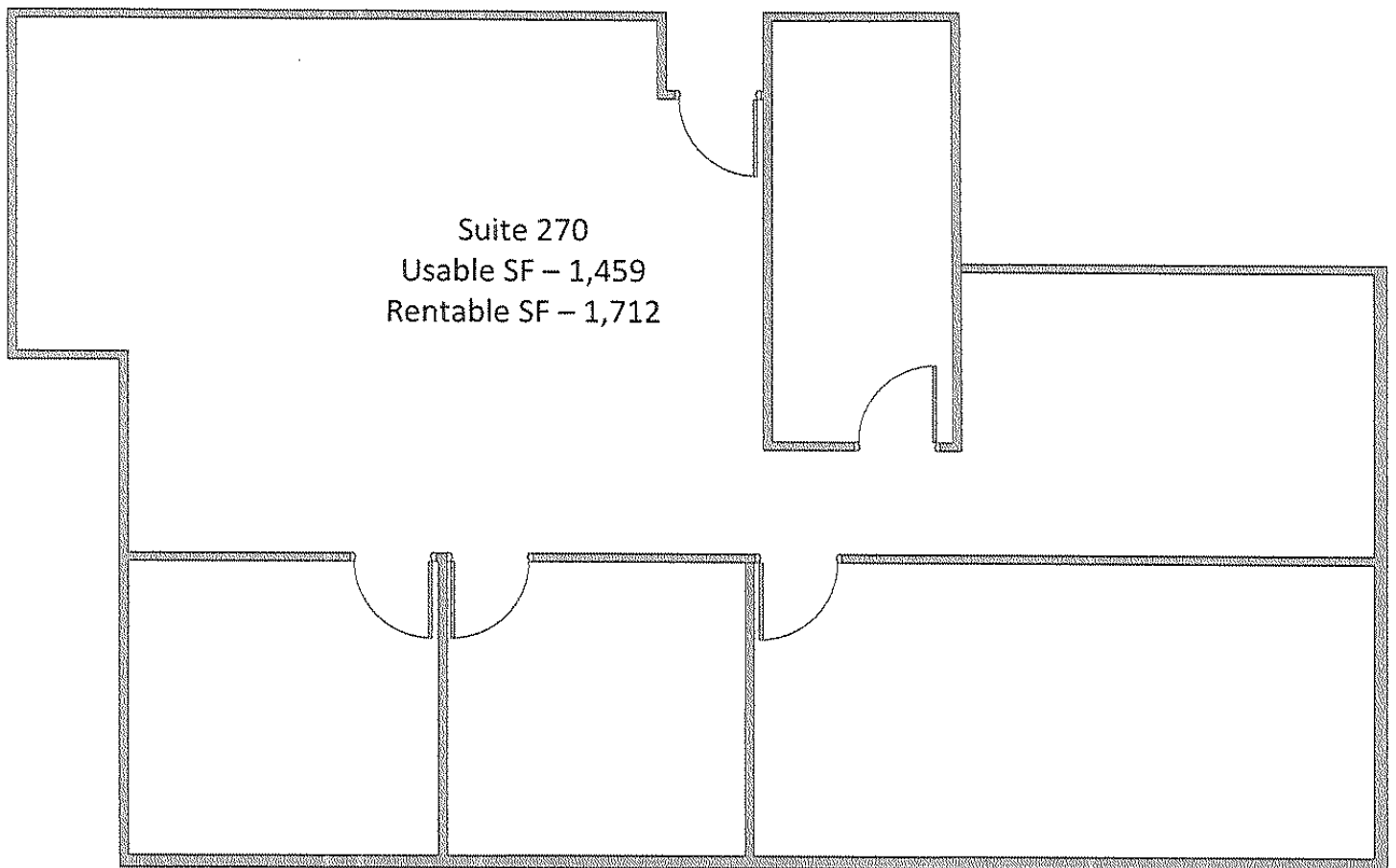
President
916-933-2300 Office
doug@quirazcre.com

Kaci Dube

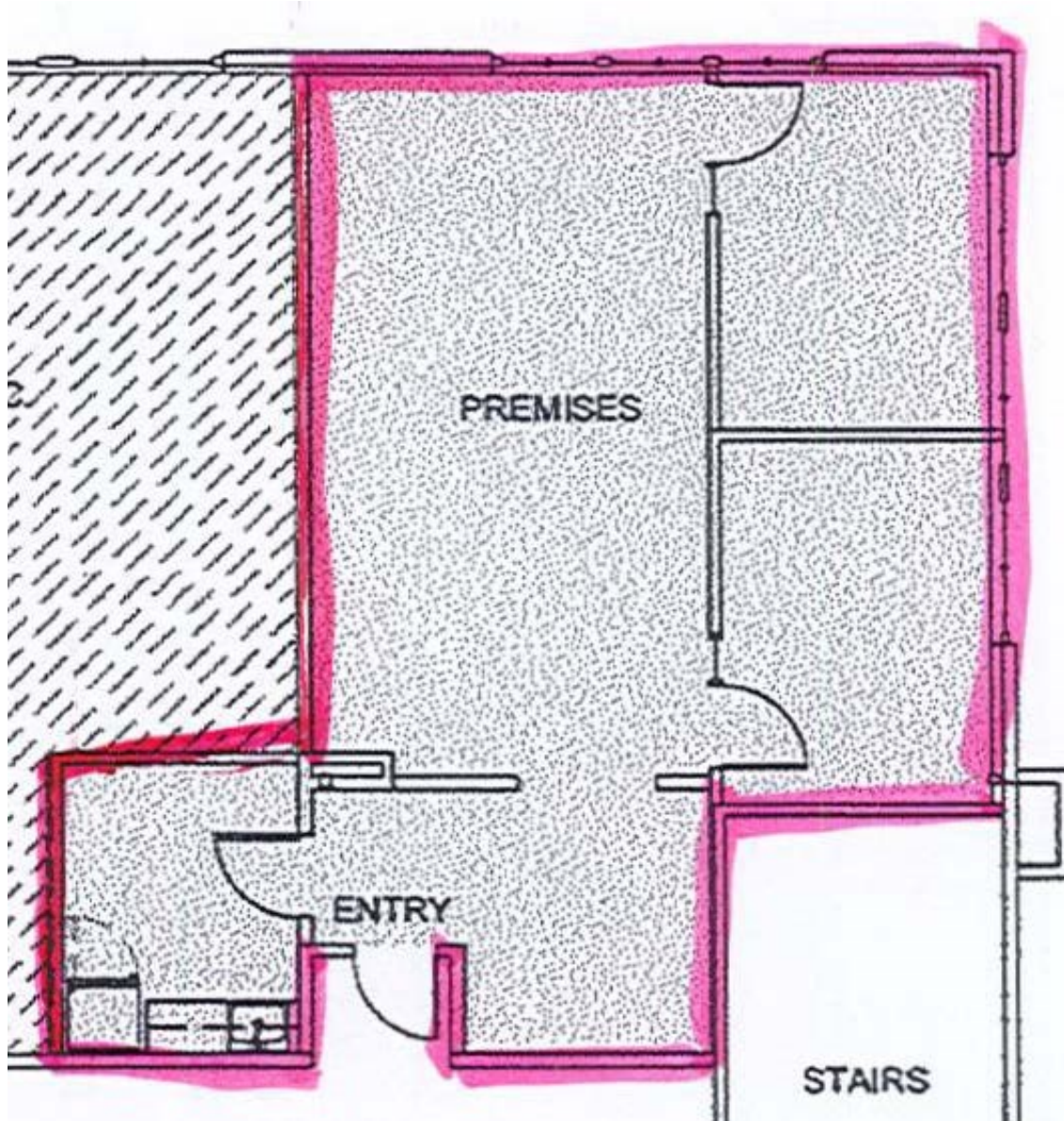
Leasing Agent/Property Manager
916-933-2300 Office
kaci@quirazcre.com

The information contained herein was obtained from third parties, and it has not been independently verified by the real estate brokers. Buyers/tenants should have the experts of their choice inspect the property and information. Real estate brokers are not qualified to act as or select experts with respect to legal, tax, environmental, building construction, soils-drainage or other such matters.

AVAILABLE FLOOR PLANS



AVAILABLE FLOOR PLANS



Suite 285
+/- 1,026 RSF

Note: All Dimensions are approximate

QUIROZ COMMERCIAL, INC

www.quirzcre.com
BRE# 02113619

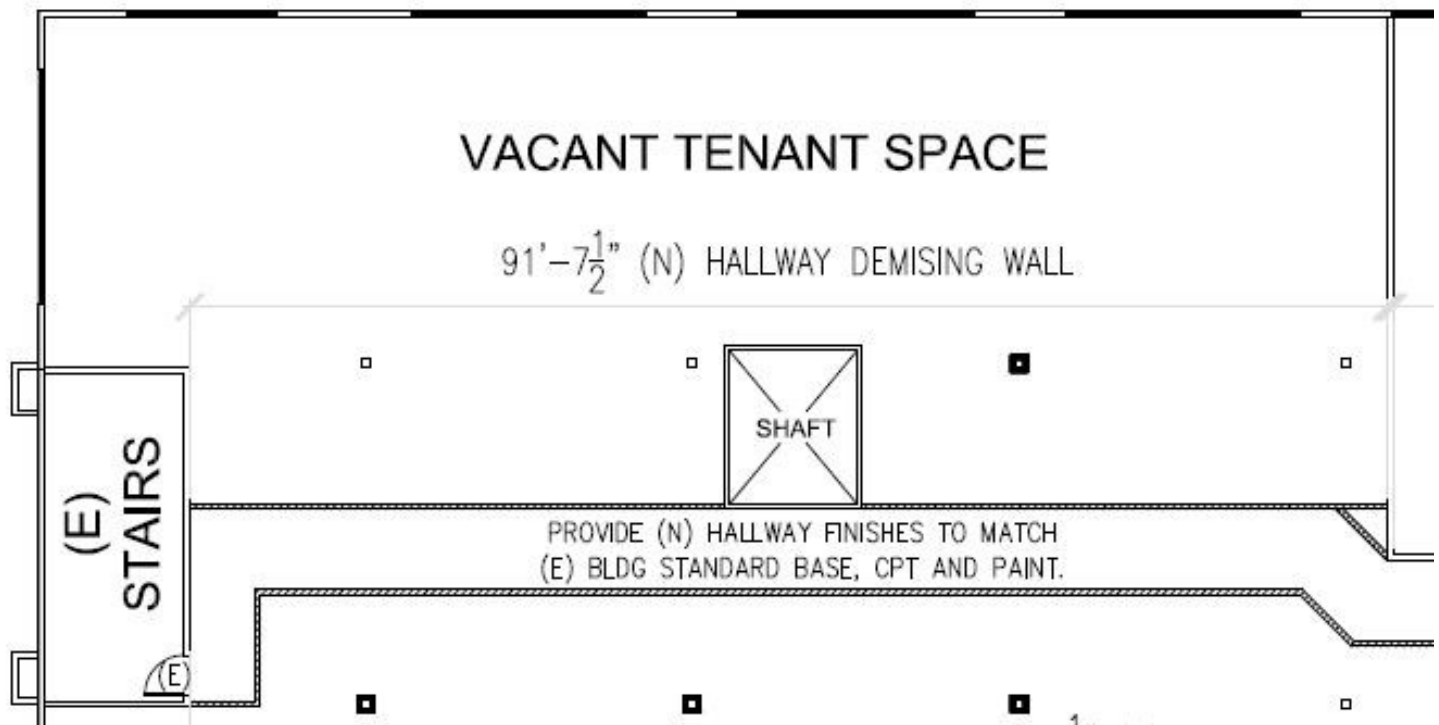
Douglas Quiroz

President
916-933-2300 Office
doug@quirzcre.com

Kaci Dube

Leasing Agent/Property Manager
916-933-2300 Office
kaci@quirzcre.com

AVAILABLE FLOOR PLANS



Suite 210

+/- 4,051 RSF

Note: All Dimensions are approximate

QUIROZ COMMERCIAL, INC

www.quirazcre.com
BRE# 02113619

Douglas Quiroz

President
916-933-2300 Office
doug@quirazcre.com

Kaci Dube

Leasing Agent/Property Manager
916-933-2300 Office
kaci@quirazcre.com

AERIAL MAP/AREA MAP



QUIROZ COMMERCIAL, INC

www.quirazcre.com
BRE# 02113619

Douglas Quiroz

President
916-933-2300 Office
doug@quirazcre.com

Kaci Dube

Leasing Agent/Property Manager
916-933-2300 Office
kaci@quirazcre.com