



FORMER KMART DEVELOPMENT

400 E ROLLINS ROAD / ROUND LAKE BEACH, IL

TRANSFORMCO
PROPERTIES

AVAILABLE NOW

FORMER KMART DEVELOPMENT



address

400 E Rollins Road
Round Lake Beach, IL

features

- Located off busy Rollins Road
- Anchor to Rollins Crossing
- Pylon signage available
- Parking spaces - 1,395
- Zoning - B Commercial Business
- Traffic Counts:
 - Rollins Road - 23,800 VPD
 - Route 83 - 22,300 VPD

availability

190,174 SF
Available Now

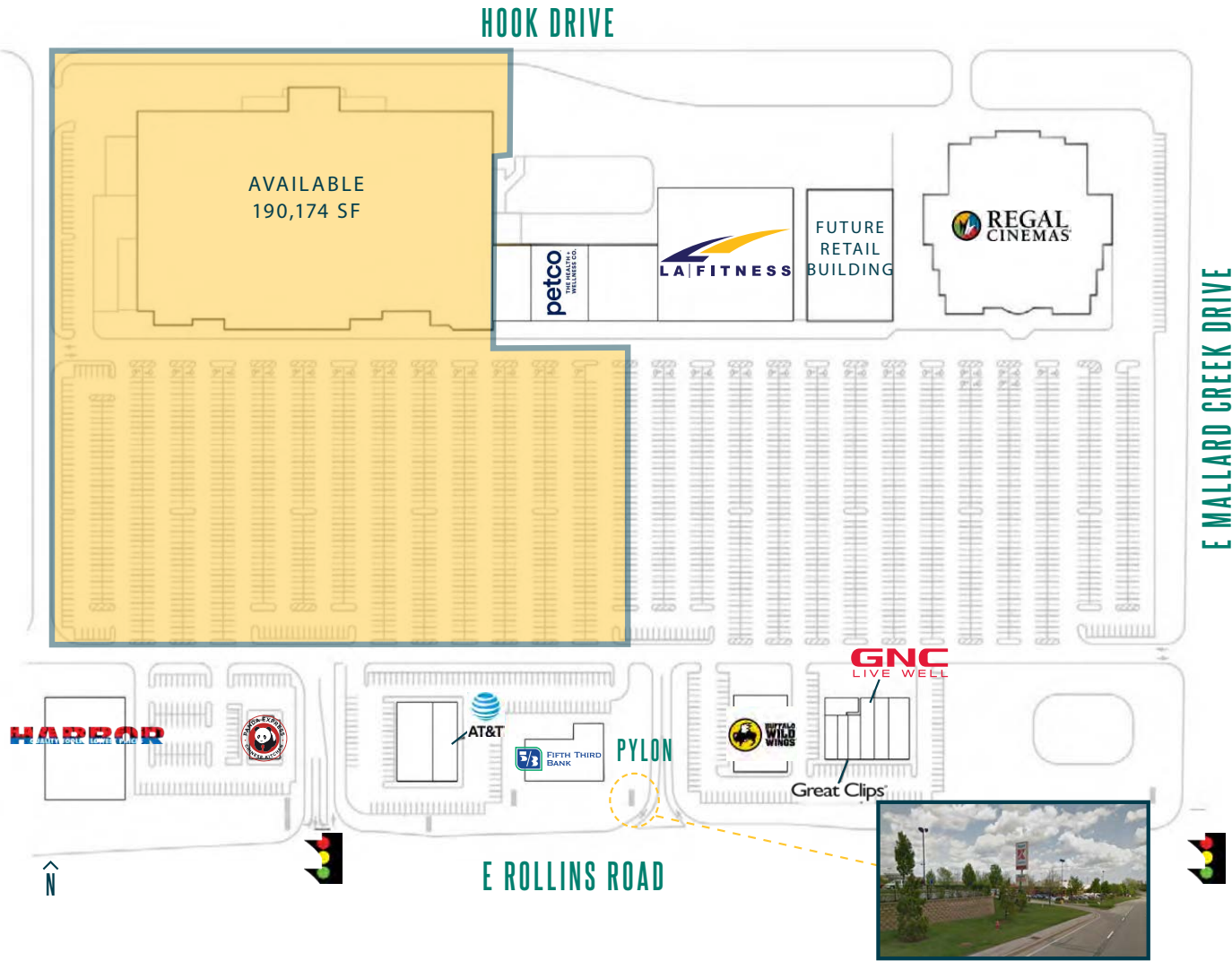
neighboring tenants



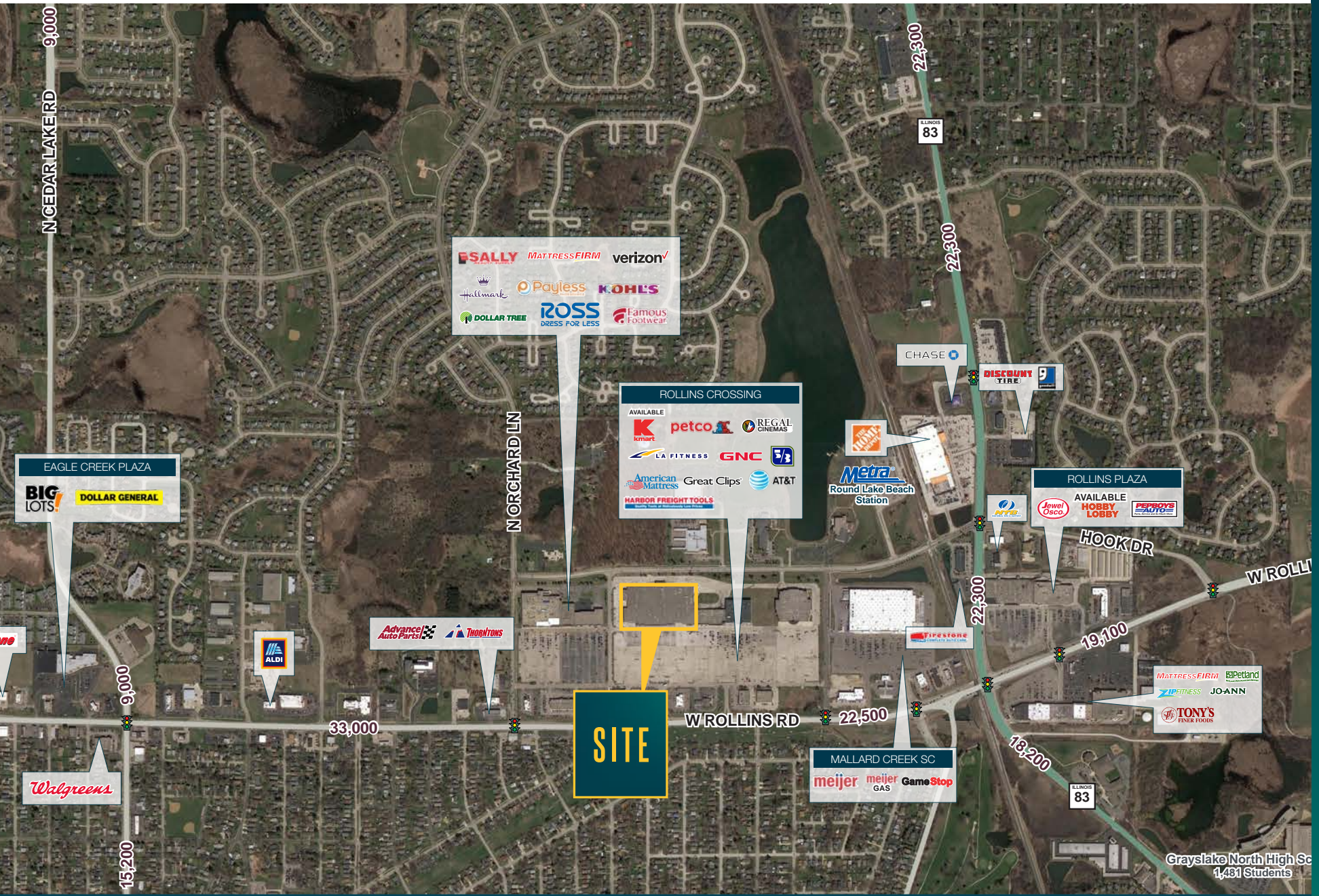
demographics

	1M	3M	5M
AVG HOUSEHOLD INCOME	\$91,872	\$97,047	\$108,511
POPULATION	12,777	72,890	148,173
DAYTIME POPULATION	10,698	59,423	123,207

FORMER KMART DEVELOPMENT



FORMER KMART DEVELOPMENT



FORMER KMART DEVELOPMENT

400 E ROLLINS ROAD / ROUND LAKE BEACH, IL

DICK SPINELL

T: 630.954.7364

DSpinell@MidAmericaGrp.com

MIKE PHILLIPS

T: 630.954.7358

MPhillips@MidAmericaGrp.com

ANDY BULSON

T: 630.954.7376

ABulson@MidAmericaGrp.com



MID-AMERICA®

One Parkview Plaza, 9th Floor
Oakbrook Terrace, Illinois 60181
630.954.7300

MidAmericaGrp.com

