

Centerpointe Business Park

18000 | 72nd Avenue South
Kent, WA



3,954 SF, 7,414 SF, 8,756 SF & 12,710 SF

Flex/Industrial Spaces

 THE ANDOVER
COMPANY, INC.
CORFAC INTERNATIONAL

BRIAN BRUININKS, CCIM
(206) 856-6249
bbruininks@andoverco.com

MIKE HEMPHILL
(206) 550-4176
mhemphill@andoverco.com

PROPERTY HIGHLIGHTS



MODERN
OFFICE SPACE



14' - 16'+
CLEAR HEIGHT



NUMEROUS
GRADE LEVEL
DOORS



SOME SUITES HAVE
ACCESS TO DOCK
HIGH LOADING DOORS



AVAILABILITIES
IN 2026



RATES:
PLEASE CALL LISTING
BROKERS

PROPERTY HIGHLIGHTS

RENTAL RATE

\$1.15/SF/Mo + NNN shell warehouse
\$1.30/SF/Mo + NNN for office space
with triple net costs of \$0.50/SF/Mo.

SPACE AVAILABLE

12,710 SF total (includes 5,590 SF office)
8,756 SF total (includes 3,316 SF office)
3,954 SF total (includes 2,274 SF office)
NEW! 7,414 SF (includes up to 3,584 SF office)

PARKING RATIO (AND ANY CHARGE)

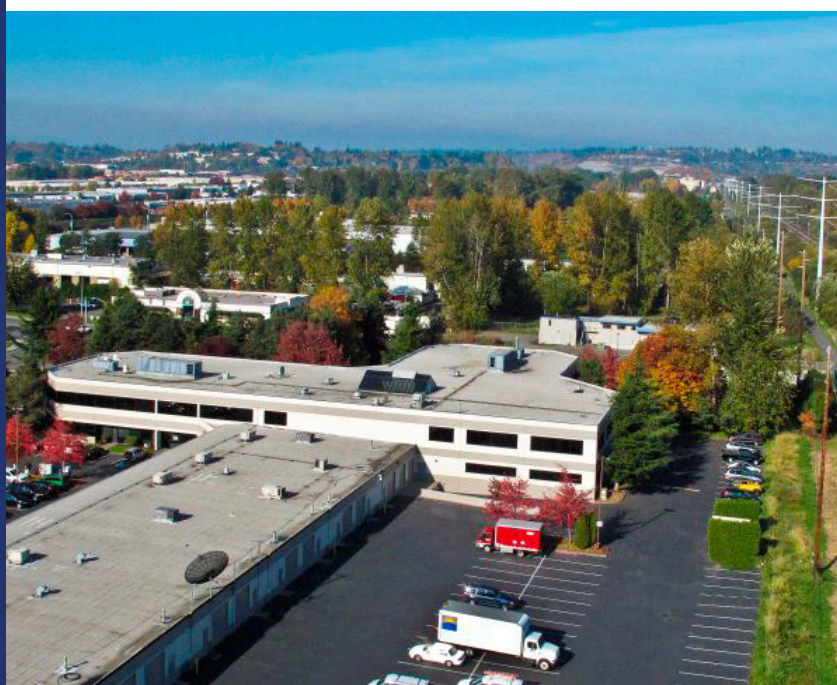
4.0 Stalls per 1,000 SF leased free.

NOTEWORTHY AMENITIES

Next to starbucks, townplace suites hotel, numerous restaurants, ikea and home depot. centerpointe has showers and lockers available for tenants, and it is located next to walking/biking trail. dock high and grade level loading; 14' - 16'9" clear height in warehouse.

NEARBY HOTELS

5 Hotels within one half mile.



AVAILABLE SPACES

3,954 SF - 12,710 SF

SUITE	TOTAL SF	OFFICE SF	WAREHOUSE SF	LOADING	COMMENTS
18034	3,954 SF	2,274 SF	1,680 SF	Loading area is designed to accommodate larger delivery trucks. 1 grade level door, 1 dock high door.	<ul style="list-style-type: none"> Great flex/industrial space at north end of Kent Office area has four private offices, conference room and open work area Warehouse has 14' clear height Available 7/01/26
18064	8,756 SF	3,316 SF	5,440 SF	Loading area is designed to accommodate larger delivery trucks. 1 grade level door, 1 dock high door.	<ul style="list-style-type: none"> Great flex industrial space at north end of Kent Office area has two private offices, conference room, and break room Warehouse has 16'9" clear height Available 7/01/26
18034 & 18064	12,710 SF	5,590 SF	7,120 SF	Loading area is designed to accommodate larger delivery trucks. 2 grade level doors, 2 dock high doors.	<ul style="list-style-type: none"> Great flex industrial space at north end of Kent Space has two office entries. The office area is a mix of private offices, open space, conference room and break room. Warehouse has 16'9" and 14' clear heights Available 7/01/26
NEW! 18024	7,414 SF	3,346 SF	3,830 SF	Loading area is designed to accommodate larger delivery trucks. 5 grade level loading doors, 2 dock high doors.	<ul style="list-style-type: none"> Great flex industrial space at north end of Kent Up to 3,584 SF office. Some of office can be removed. Mix of private offices and open work areas 14' clear height Available 07/01/2026

PROPERTY PHOTOS



18024

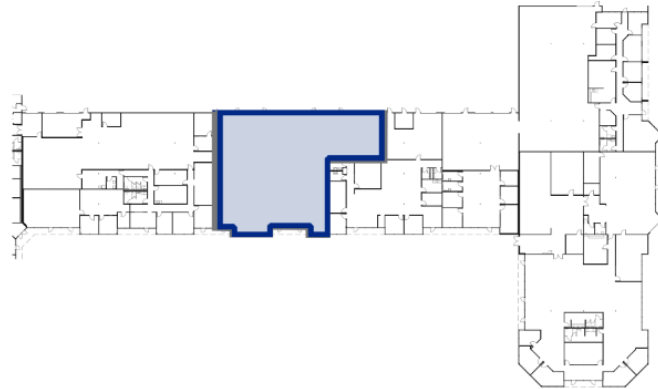
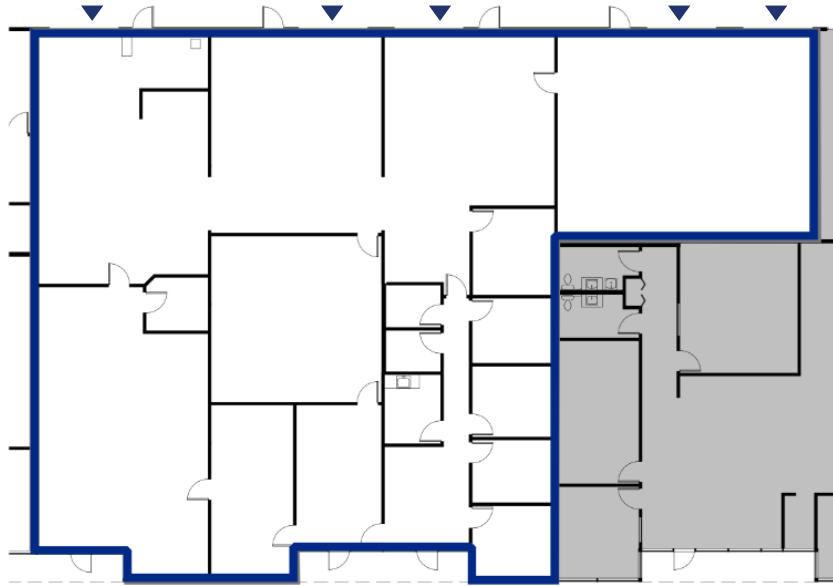
72nd Avenue South
Kent, WA

SUITE 18024

Total SF: **7,414 SF**

Office SF: **3,346 SF**

Warehouse SF: **3,830 SF**



- ▲ Dock high door
- Grade level door

BRIAN BRUININKS, CCIM
(206) 856-6249
bbruininks@andoverco.com

MIKE HEMPHILL
(206) 550-4176
mhemphill@andoverco.com



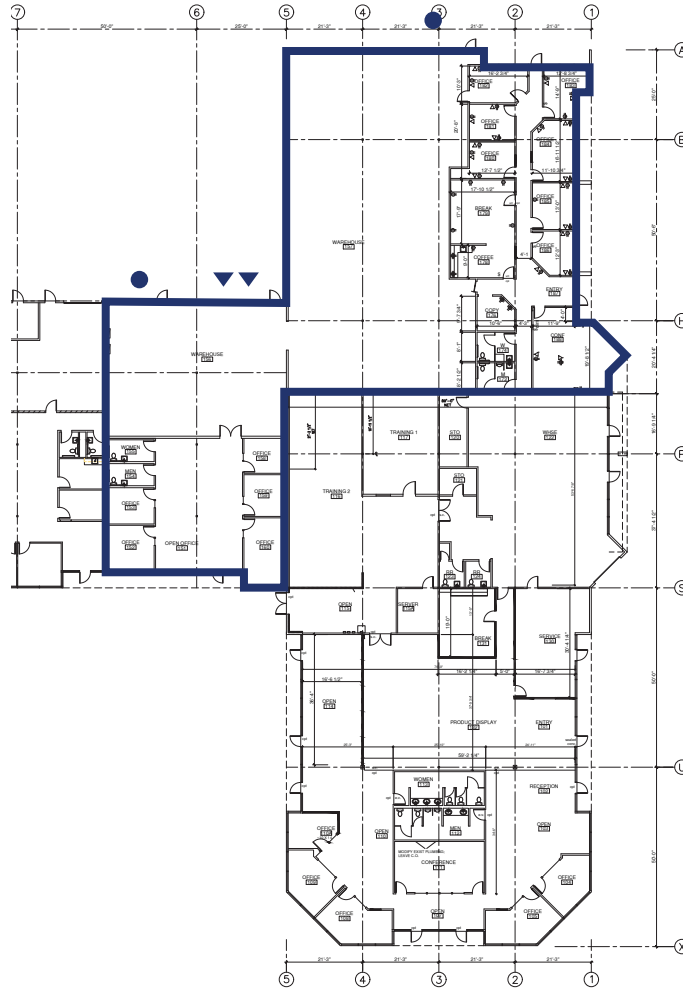
18034/18064 | 72nd Avenue South Kent, WA

SUITE 18034 + 18064

Total SF: **12,710 SF**

Office SF: **5,590 SF**

Warehouse SF: **7,120 SF**



BRIAN BRUININKS, CCIM
(206) 856-6249
bbruininks@andoverco.com

MIKE HEMPHILL
(206) 550-4176
mhemphill@andoverco.com



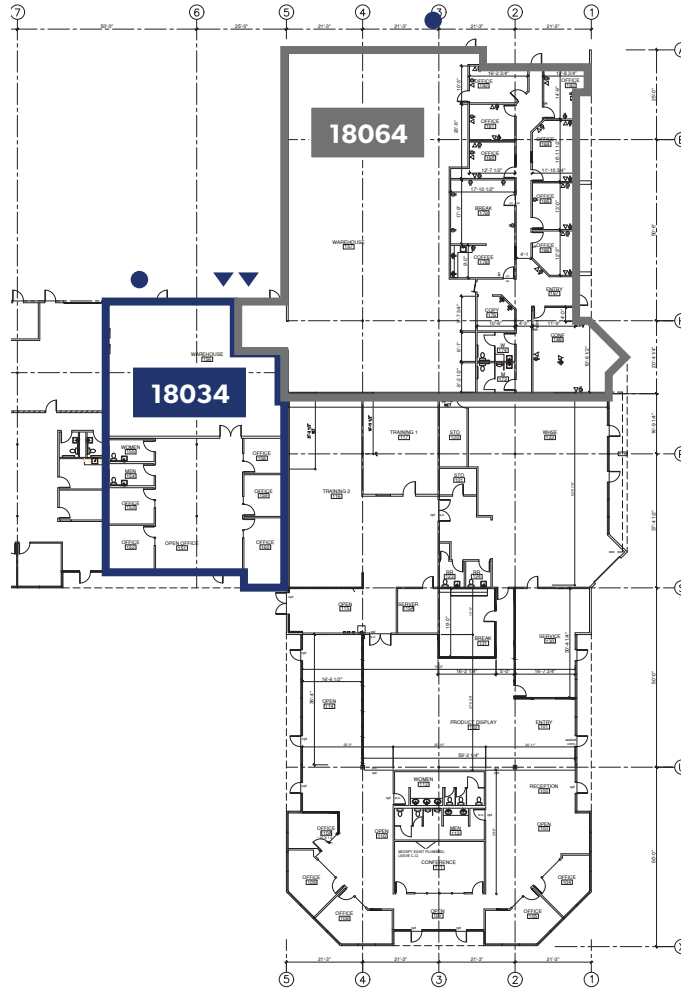
18034/18064 | 72nd Avenue South Kent, WA

SUITE 18064

Total SF: **8,756 SF**
Office SF: **3,316 SF**
Warehouse SF: **5,440 SF**

SUITE 18034

Total SF: **3,954 SF**
Office SF: **2,274 SF**
Warehouse SF: **1,680 SF**



- ▲ Dock high door
- Grade level door

BRIAN BRUININKS, CCIM
(206) 856-6249
bbruininks@andoverco.com

MIKE HEMPHILL
(206) 550-4176
mhemphill@andoverco.com

