

Specifications

±0.14 AC (Block 1006, Lot 18)
TOTAL ACREAGE

Auto Dealers
Car / Bus / Truck Parking
Outdoor Storage
Equipment Yard
IDEAL USE

Vacant Land
Fenced Property
PROPERTY FEATURES

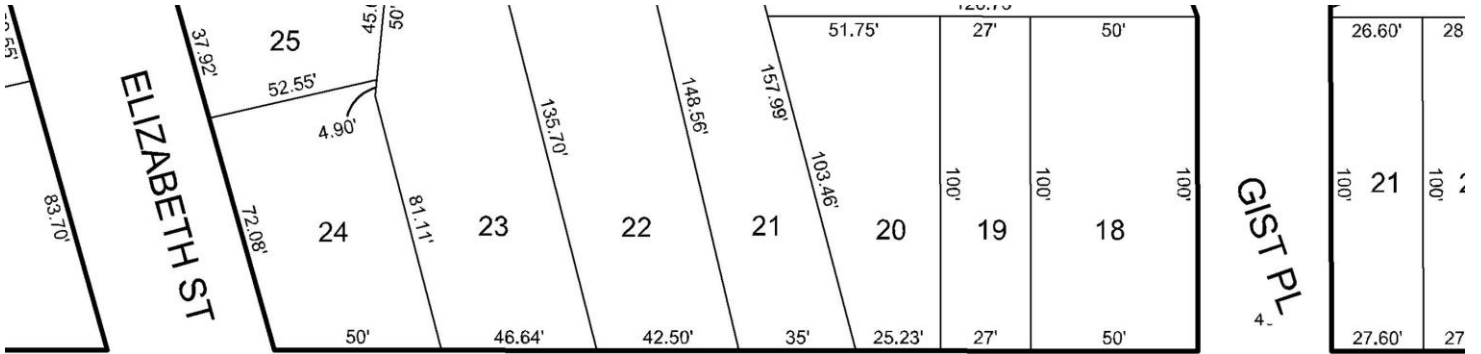
\$3,469.84 (2024)
TAXES

Commercial Use
ZONING

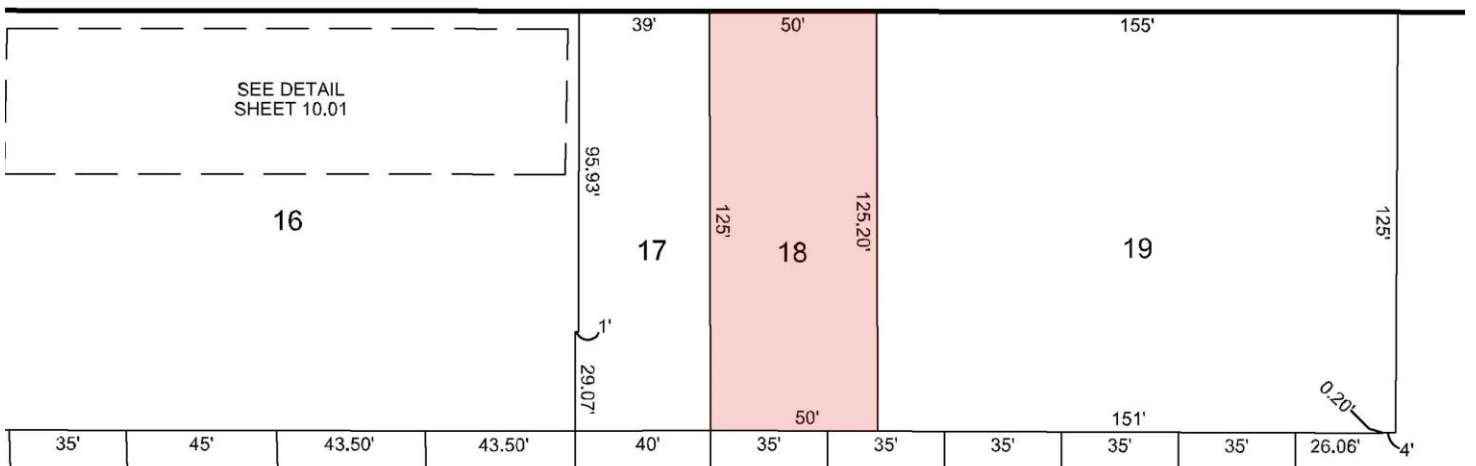
0.6 Miles to I-280
2.1 Miles to GSP
6.3 Miles to I-78
9.1 Miles to I-95
ACCESSIBILITY

For additional property information or to arrange an inspection,
please contact the exclusive broker:

Juan Disla
Director
973.379.6644 x 153
JD@blauberg.com

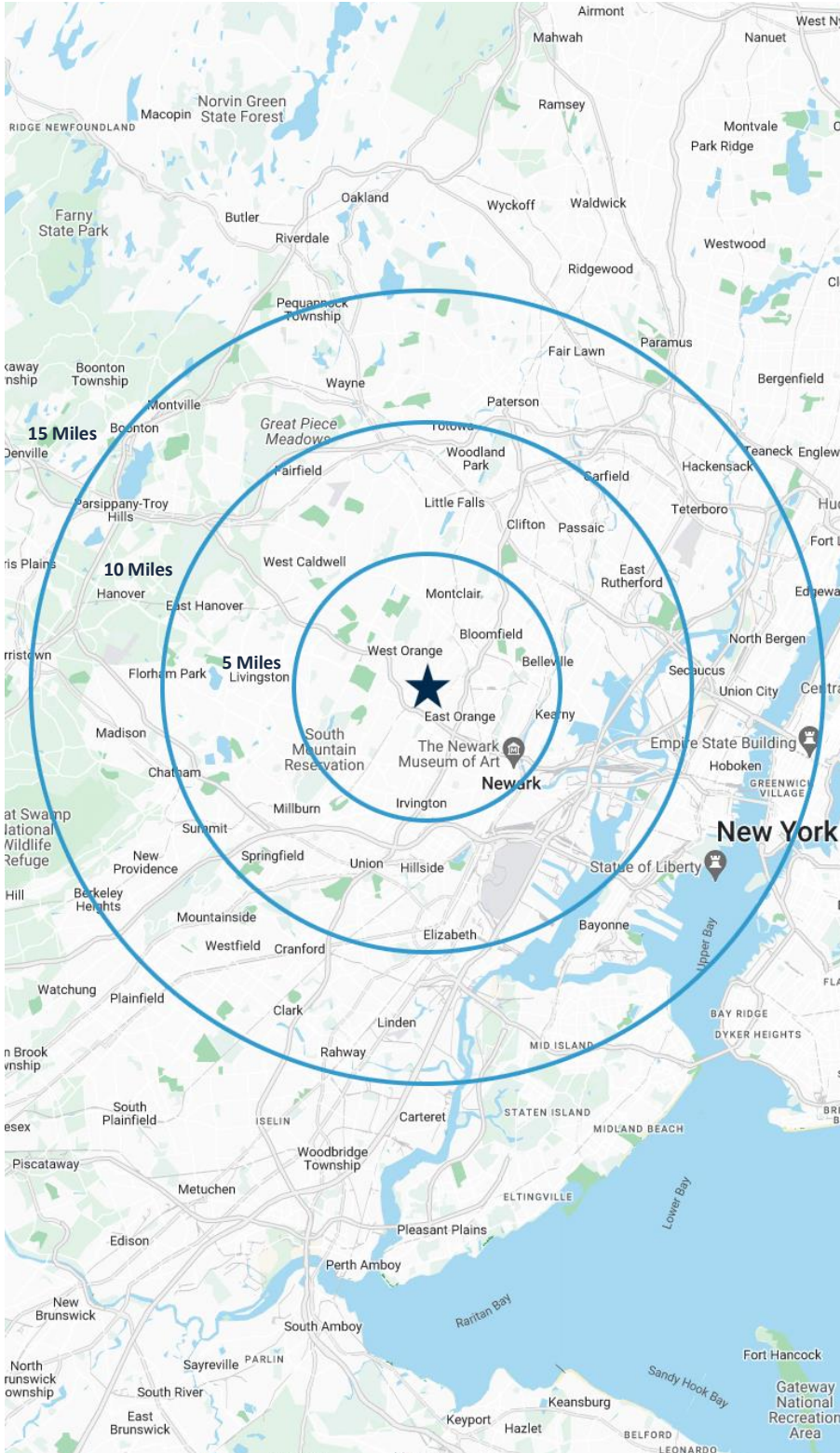


N DAY ST



For additional property information or to arrange an inspection, please contact the exclusive broker:

Juan Disla
 Director
 973.379.6644 x 153
 JD@blauberg.com



5 MILES

- Total Population: 799,215
- Households: 304,575
- Median Household Income: \$89,575
- Average Household Size: 2.6
- Transportation to Work: 395,231
- Labor Force: 636,432

10 MILES

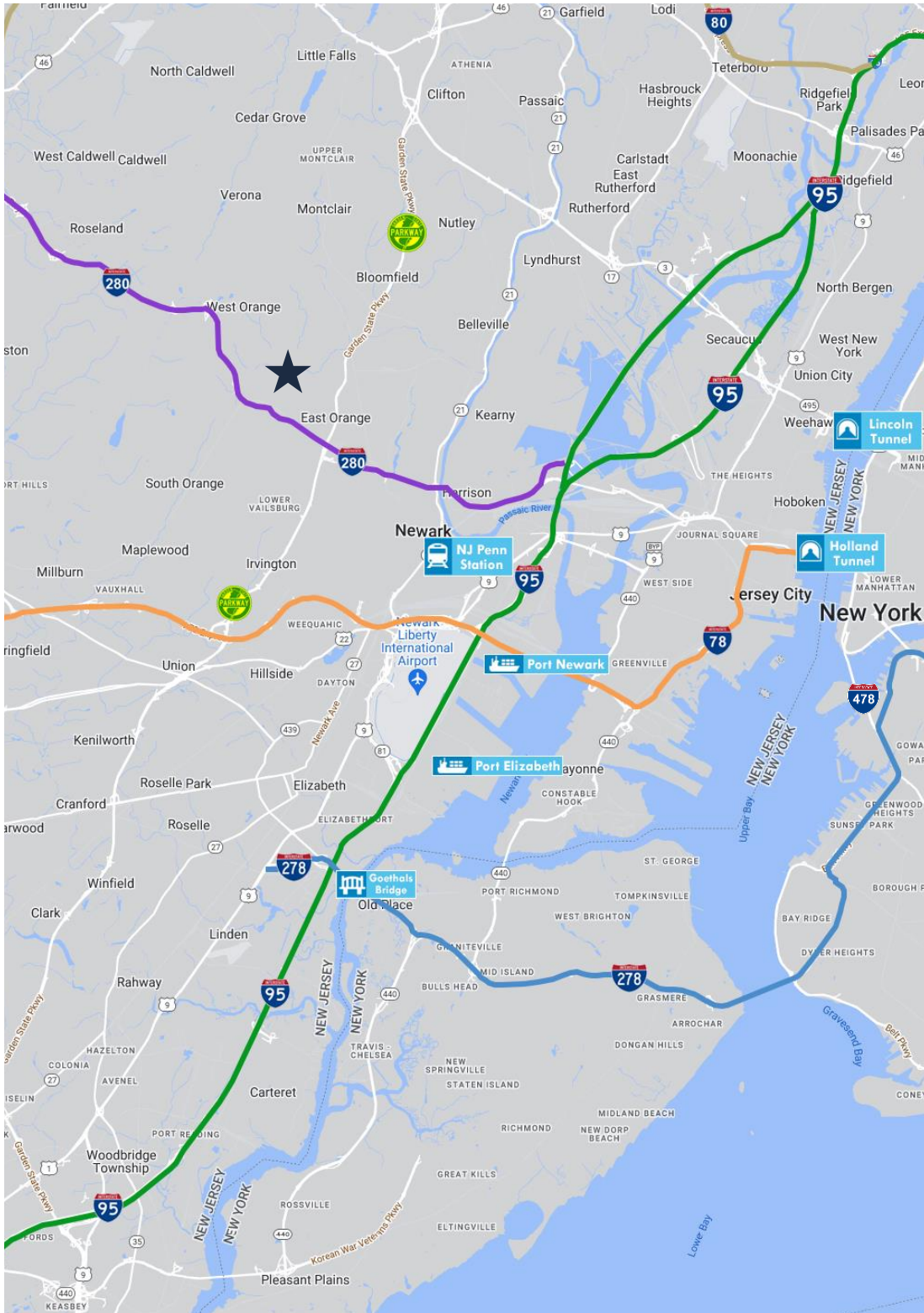
- Total Population: 2.09M
- Households: 775,335
- Median Household Income: \$96,581
- Average Household Size: 2.6
- Transportation to Work: 1.05M
- Labor Force: 1.68M

15 MILES




- Total Population: 5.66M
- Households: 2.33M
- Median Household Income: \$116,233
- Average Household Size: 2.4
- Transportation to Work: 2.99M
- Labor Force: 4.67M

For additional property information or to arrange an inspection, please contact the exclusive broker:

Juan Disla
Director
973.379.6644 x 153
JD@blauberg.com



ACCESSIBILITY

	0.6 MI I-280
	2.1 MI GSP
	5.4 MI Penn Station
	6.3 MI I-78
	9.1 MI I-95 Exit 15W
	13.6 MI Ports Newark & Elizabeth
	13.9 MI Newark Airport
	13.9 MI Holland Tunnel
	15.8 MI Lincoln Tunnel

For additional property information or to arrange an inspection, please contact the exclusive broker:

Juan Disla
 Director
 973.379.6644 x 153
 JD@blauberg.com

The information contained herein has been obtained from sources considered to be reliable, but no guarantee of its accuracy is made by this company. In addition, no representation is made respecting zoning, condition of title, dimensions, or any matters of a legal or environmental nature. Such matters should be referred to legal counsel for determination. Terms and conditions are subject to change without prior notice. Subject to errors and omissions.